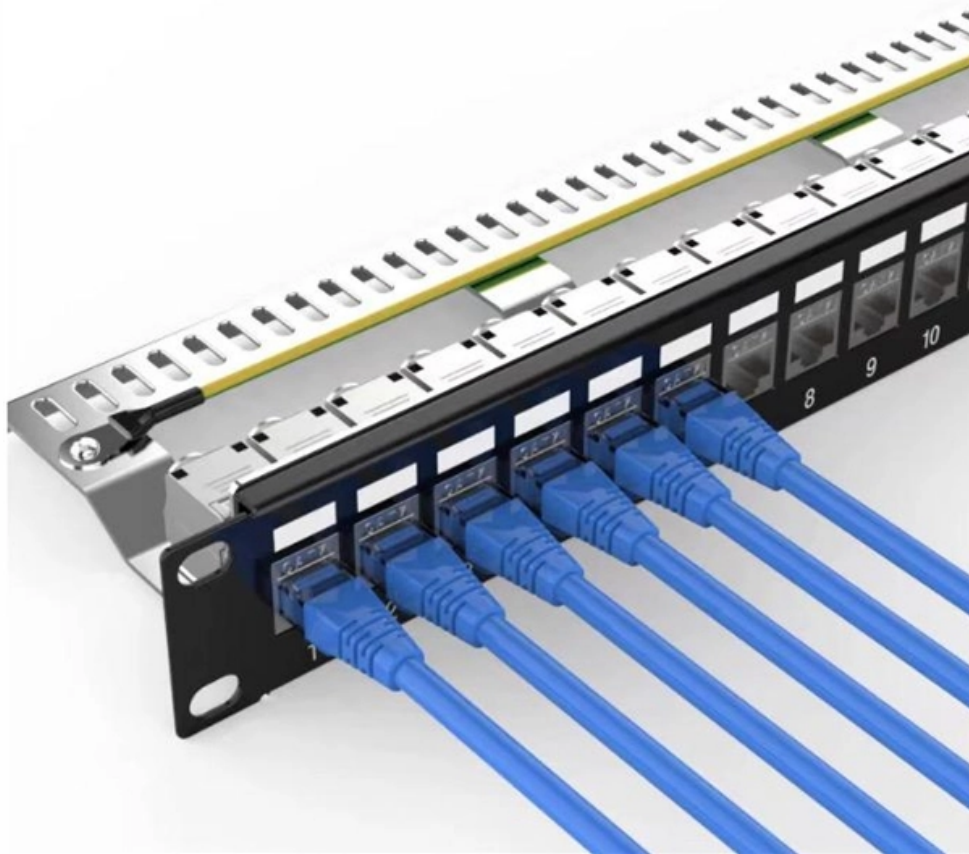


Switch fiber optic indicator light is red





Overview

For LOS (Loss of Signal) red lights on fiber or advanced gateways, it usually means the incoming optical line is not detected or has low signal. Double-check that the fiber line is connected properly and that there's no bend or physical damage. However, when it blinks red or stays solid red, it signifies a Loss of Signal, a problem preventing your router from communicating. First noticed the SH2 flashing purple and lastly moved a unit out the way to get a good view of the Openreach modem. Before you panic or call tech support, there are several simple fixes you can try at home that often solve this problem in minutes. It can also indicate your router is undergoing a firmware update, temporarily losing its link to the internet or local network.



Switch fiber optic indicator light is red



How to Use a Visual Fault Locator (VFL): A Step-by

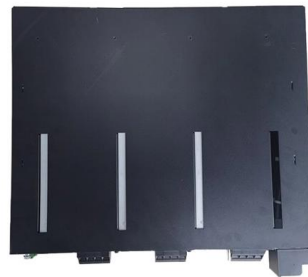
When it comes to testing fiber optic cables, a Visual Fault Locator (VFL) is an essential tool in your toolkit. A VFL is used to detect faults, breaks, or

[Contact Us](#)

Router Blinking Red/Orange: Meaning and How to Fix

"LOS" stands for Loss of Signal, and the red indicator typically shows that the fiber optic line isn't detected. Gently inspect

[Contact Us](#)



Learn About Optical Network Terminal Status Lights

You can use the status lights on your optical network terminal (ONT) to help find and identify issues with your internet. Sometimes an ONT is referred to as

[Contact Us](#)



LOS Light Blinking Red on Router: Easy Fixes

That blinking red LOS light looks scary, but it's usually fixable with simple steps you can do yourself. Most of the time, it's either a loose cable or a



How to Fix Red Light on My Router

How to Fix Red Light on My Router A red light on your router can be a source of frustration and confusion. It often indicates that something is wrong with your internet connection or

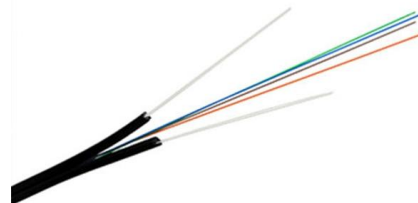
[Contact Us](#)



My Optical Light is flashing, has gone off or has gone red

If you find that the Optical/Config/PON Light on your Fibre ONT (Optical Network Terminal) box is flashing, has gone off, or has gone red, this indicates there may be an issue with the

[Contact Us](#)



Modem & Router Lights Explained , BroadbandSearch

The PON or optical light is your most important ONT indicator -- it tells you whether the fiber cable itself is delivering a signal from your provider's network. A red or blinking PON light almost

[Contact Us](#)

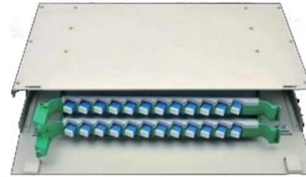




Why Your Modem and Router Lights Are Blinking

Learn what all those lights on your modem and router actually mean and how you can use them.

[Contact Us](#)



What Do the Lights on My Fiber Equipment Mean?

Not sure what the lights on your fiber equipment mean? This guide explains each status light and how to troubleshoot common issues.

[Contact Us](#)

Router Showing a Red Light? Try These 6 Fixes

A router showing a red light can mean different things, like a service outage, misconfiguration, or loose connection, all of which can lead to a broken

[Contact Us](#)



How to Fix LOS Red Light on Router or Modem

Red light on your modem? Learn steps to fix connectivity issues, resolve ISP errors, and address hardware faults efficiently.

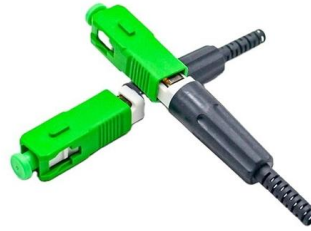
[Contact Us](#)



LOS Light Blinking Red on Router? Meaning, Causes

If the LOS light on your fiber router or ONT is blinking red, it usually means Loss Of Signal. This guide explains the likely causes, the checks you can do at home, and

[Contact Us](#)



How to Fix the Red Light on your Wi-Fi Router

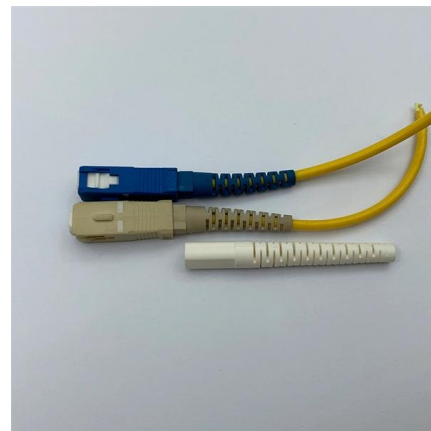
A red light on your Wi-Fi router typically indicates an issue with your internet connection though we have 8 actions you can take to fix it.

[Contact Us](#)

Router Blinking Red/Orange: Meaning and How to Fix

What does the LOS red light mean on a fiber connection? "LOS" stands for Loss of Signal, and the red indicator typically shows that the fiber optic

[Contact Us](#)



Fiber Network Troubleshooting - Common Issues & Fixes

Fiber optic networks are celebrated for their speed and reliability, but even the best systems can encounter problems. When issues like signal loss,

[Contact Us](#)

How to Fix a Red Light on Your WiFi Router



This article provides a comprehensive guide to diagnosing and resolving the most common causes of a red light indicator on your WiFi router. Understanding Router LED Indicators: A Quick

[Contact Us](#)



Red LOS came on and I don't know how to fix it? (Optic

Issue was that they used a shitty fibre coupler instead of properly splicing the cable or something like this (don't understand fibre too much). They came back with

[Contact Us](#)

What to Do When the LOS Light Blinks Red and How to

This guide will walk you through what the LOS light means, why it blinks red and step-by-step instructions on how to resolve the issue, including

[Contact Us](#)



How to Fix LOS Red Light (PLDT, Globe, Converge)

The light indicator means loss of signal, fiber optic cable not properly connected to the modem, damage cable, and ISP network problem. You may

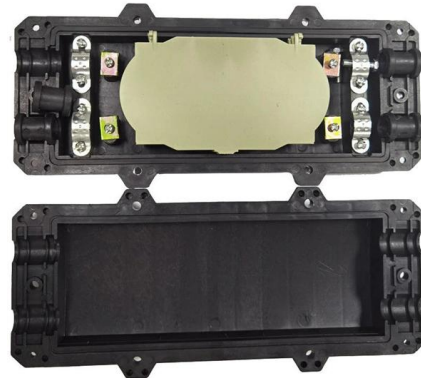
[Contact Us](#)



How to fix a red blinking light on a router

Red blinking lights mean trouble. If your router is failing to connect with a red light on, you need to check your connection.

[Contact Us](#)



Fixed: No Internet - red light for LOS indicator on ONT - Plusnet

The red light on my ONT (Optical Network Terminal) was indicating a loss of signal (LOS), and I was unable to access the internet. After troubleshooting the issue, I found that the

[Contact Us](#)



Troubleshooting Fiber Cables : r/networking

There is a single mode optical fiber cable in our datacenter going from a Cisco N5K to another N5K across different racks. The link appears to be dead and I'm hoping to fix it, but I have little to no

[Contact Us](#)



The meaning of fiber media converters indicator and

A fiber media converter (TX) there is a problem with the optical fiber link of the optical transmission port (the optical cable or the light jumper may be broken). (4)All five

[Contact Us](#)

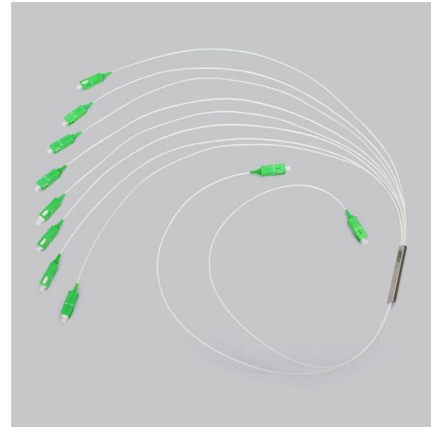




What the six indicators of the fiber media converter

Check whether the optical fiber connector is properly inserted into the device interface, whether the jumper type matches the device interface, whether

[Contact Us](#)



How to Fix LOS Red Light on Router or Modem

A red light on your modem typically means it can't detect an internet signal and can't connect. To fix this issue, you'll need to go through several

[Contact Us](#)

How To Fix Red Light On My Router

How to Fix Router Red Light? Restarting or resetting the router is often all that's needed to fix whatever is causing the red light. It's worth trying these

[Contact Us](#)



What the LED lights mean

The tables in this article provide detailed information about the possible appearances of the LED lights on each device, the possible causes of each state, and what you should do.

[Contact Us](#)



This is displaying a solid red LOS light - which I understand to stand for Loss of Service. The FTTP installers never mentioned what to do should an issue arise.

[Contact Us](#)



Contact Us

For datasheets, pricing, or custom fiber access solutions, please visit:
<https://frindel.es>