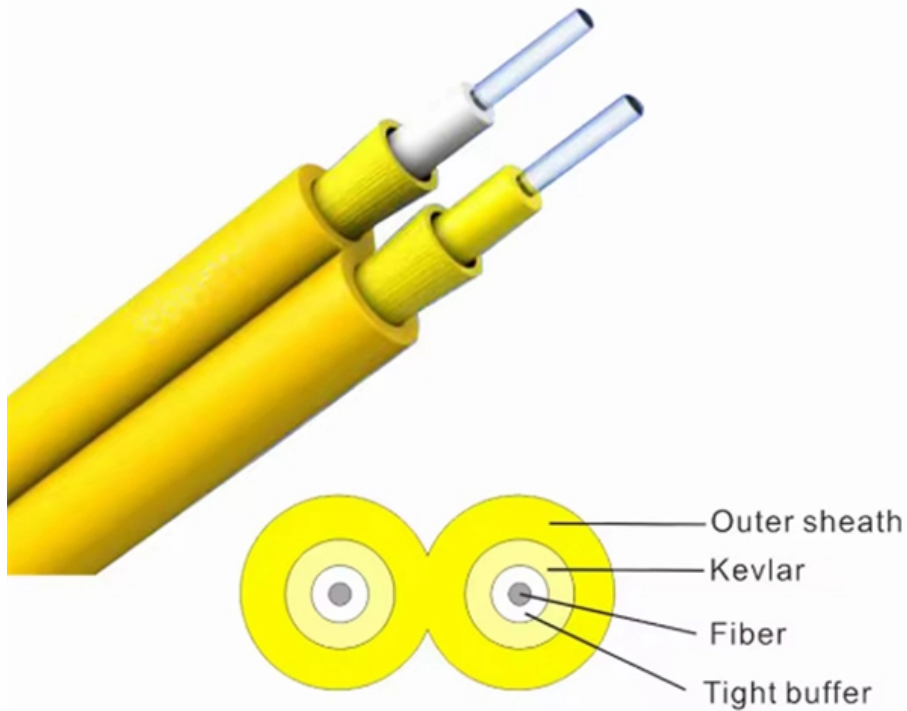


Switch Aggregation and Connection Access





Overview

They support link aggregation protocols such as Link Aggregation Control Protocol(LACP) and Static Link Aggregation, which allow multiple physical links to be combined into a single logical connection. Knowing the roles of core, aggregation, and access switches in contemporary network topology becomes essential to create effective and scalable networks. This section describes three automatic deployment modes, which can be selected based on the site requirements. Introduction: The Hierarchical Network Model In today's complex IT environments, network design follows a structured approach to ensure.



Switch Aggregation and Connection Access



Datacenter Core and Aggregation Design

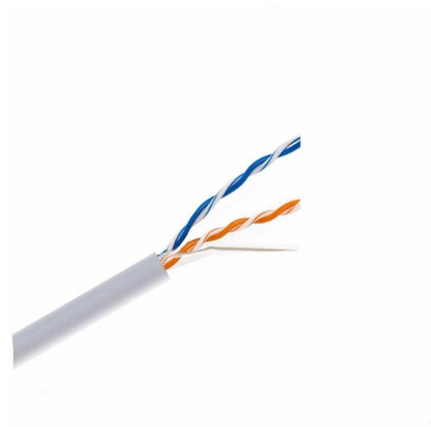
FC interfaces consist of 1/2/4GBps interfaces and connect to a SAN switch, Cisco MDS platform. The back-end high-speed fabric and storage path

[Contact Us](#)

What is Switch Aggregation, Its Role and Selection Advice

For example, if the aggregation switch needs to connect to access switches with SFP fiber ports, it is advisable to choose an aggregation switch with downstream ports that support SFP

[Contact Us](#)



What Is an Aggregation Switch and How to Choose?

Discover the role of aggregation switches. Explore differences between aggregation, access, and core switches, and choose the right model for your network.

[Contact Us](#)

What Is Distribution Switch and Why Do We Need It?

Despite advanced features of policy-based network connection, distribution layer switch functions aggregation and routing. As an aggregation



In-depth analysis: What is an aggregation switch?

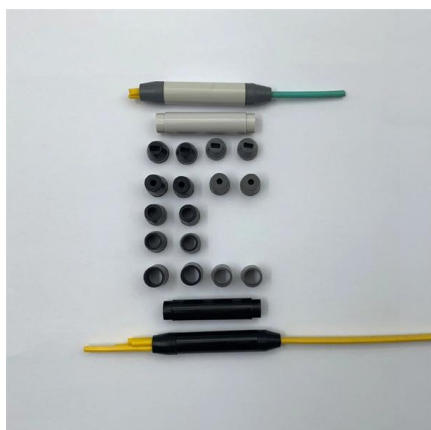
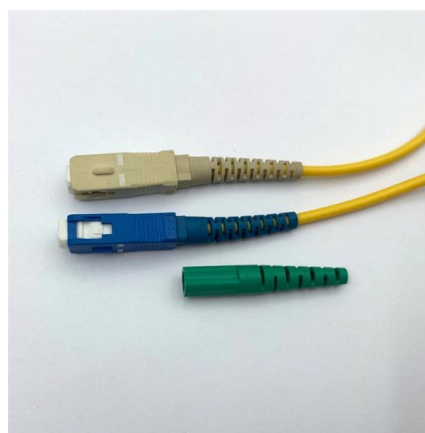
In many network constructions, we have all heard of switches. So do you really understand switches? Why are aggregation switches often overlooked?

[Contact Us](#)

Configuring Aggregation and Access Switches to Be Managed by the

After the aggregation and access switches go online, create Eth-Trunks between the access and aggregation switches. Create uplink Eth-Trunk interfaces on the access switches for connecting to

[Contact Us](#)



What is an Aggregation Switch?

The aggregation switch is located in the middle of the network architecture, which is equivalent to a middle-level manager of a company. It

[Contact Us](#)



What is Switch Aggregation, Its Role and Selection Advice

The aggregation layer serves as the convergence point for multiple access layer switches and is responsible for handling all the communication traffic from the access layer devices

[Contact Us](#)



Everything You Need to Know About Aggregation Switch

The primary function of an aggregation switch is to aggregate and forward data from multiple network devices, such as access switches, wireless

[Contact Us](#)

Why You Need a Fiber Aggregation Switch and How it

Aggregation Switch: These switches reside between access layer switches (to which clients connect) and core layer ones (to which do routing).

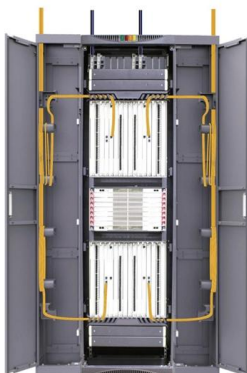
[Contact Us](#)



Everything You Need to Know About Aggregation Switch

An aggregation switch enhances network performance in the access layer by reducing the number of direct connections between access switches and

[Contact Us](#)





How To Set Up Switch Link Aggregation

Managed switches provide many advantages for a growing network, including support for VLANs, QoS, and Trunking. I touched on simple VLAN configuration a

[Contact Us](#)



Data Center Aggregation Layer Design and Configuration with

This chapter covers the design recommendations for a data center design deployment consisting of a Cisco Nexus® 7000 Series Switch at the aggregation layer and a Cisco Nexus 5000 Series Switch at

[Contact Us](#)

SMB Network Design: Core vs. Distribution vs. Access Switches

Access Switches: Connect end-user devices like PCs and phones. Distribution Switches: Aggregate traffic and enforce policy. Core Switches: Provide the high-speed backbone for the entire

[Contact Us](#)



2. Imported design is convenient for expansion.

The design of two inlets saves space and allows for rear line entry.

What Is an Aggregation Switch?

An aggregation switch is a powerful networking device that consolidates connections from multiple access switches, providing a central point for forwarding traffic and often implementing

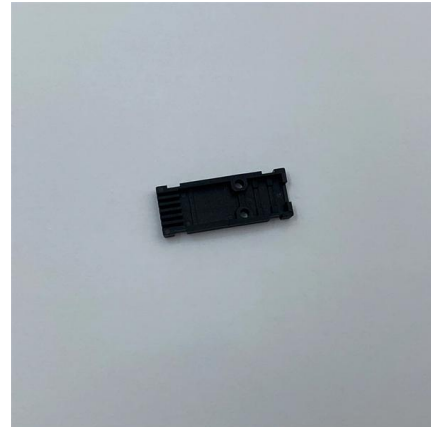
[Contact Us](#)



Understanding Switch Aggregation: A Comprehensive

Defining switch aggregation and its role in network architecture Switch aggregation, also known as link aggregation or trunking, is a method used

[Contact Us](#)



Core, Aggregation, or Access Switches? Choose the

Discover the crucial differences between core, aggregation, and access switches. Find out which type can best transform your network's

[Contact Us](#)



Redundant Link Connection From Access Switch To HA Aggregation switch

Dear Support, I am configuring an access switch with main fiber link connection to Aggregation/core switch and a second fiber link connection to the same Aggregation/core switch.

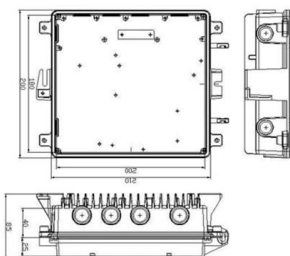
[Contact Us](#)



What Is an Aggregation Switch and How to Choose?

An aggregation switch is a network device that consolidates traffic from multiple access switches, wireless access points, or other edge devices and

[Contact Us](#)





Netyorker Cisco ME-3600X-24FS-M Switch

The Cisco ME-3600X-24FS-M is a high-performance Metro Ethernet access switch designed for service providers and enterprise edge deployments. It features 24 Gigabit SFP ports and 2 integrated 10

[Contact Us](#)



What is an Aggregation Switch? , Features and Practical Benefits

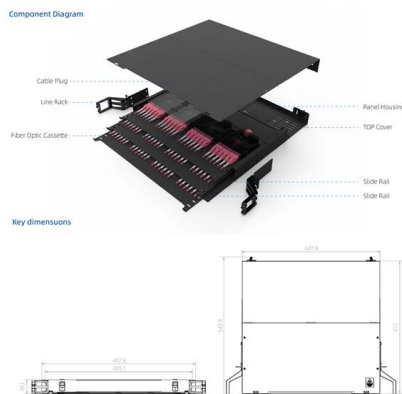
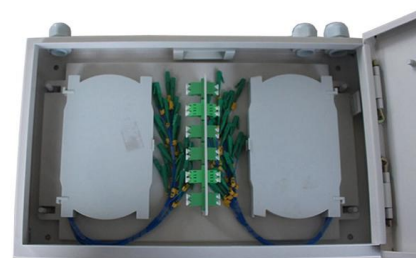
Users can immediately connect to or access the network from the location of the access switch. The aggregation switch conducts uploading and distributing in addition to other tasks

[Contact Us](#)

Data Center Design: Basic 3 Layers, Core, Aggregation,

Data Center Basic Layered Design of Core, Aggregation, and Access The data center network design is based on a proven layered approach, which

[Contact Us](#)



What is an Aggregate Switch?

An aggregate switch consolidates traffic from access switches, while a core switch forms the backbone of the network, interconnecting multiple aggregate switches and providing access to

[Contact Us](#)



HPE Aruba Networking CX 6300 Switch Series

This data sheet describes key features, supported standards and specifications for the HPE Aruba Networking CX 6300 Switch Series ideal for enterprise access and aggregation networks.

[Contact Us](#)



Contact Us

For datasheets, pricing, or custom fiber access solutions, please visit:
<https://frindel.es>