

Standards for Horizontal Supports of Cable Trays



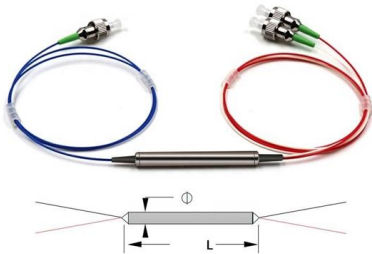


Overview

The International Electrotechnical Commission (IEC) provides detailed guidelines for cable tray systems under IEC 61537. This standard outlines the construction requirements, testing methods, and performance parameters for cable trays and related support systems. The mechanical and electrical characteristics, tests, certifications, overall quality management, recommendations mentioned.



Standards for Horizontal Supports of Cable Trays



Industrial Cable Tray Manufacturer & Supplier in India

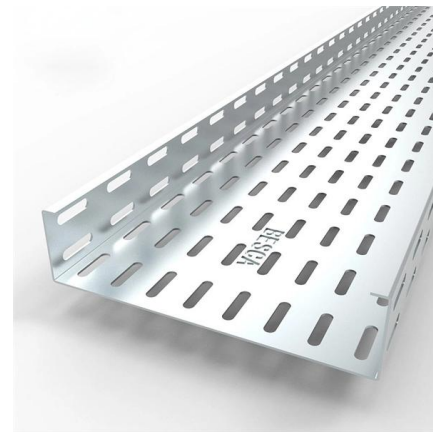
High-load galvanized perforated & ladder cable trays. Leading industrial cable tray manufacturer & supplier in India. Custom sizes, full accessories, quick installation.

[Contact Us](#)

Best practice guide to cable ladder and cable tray

Cable ladder and cable tray systems The following recommendations are intended to be a practical guide to ensure the safe and proper installation of

[Contact Us](#)



Speeds of Cat5e, Cat6, Cat6a, Cat7, and Cat8 Cables

In a typical multi-floor office building, horizontal cable runs from the IDF closet to the furthest workstation regularly exceed 55 metres when you account

[Contact Us](#)



Guide to cable support systems

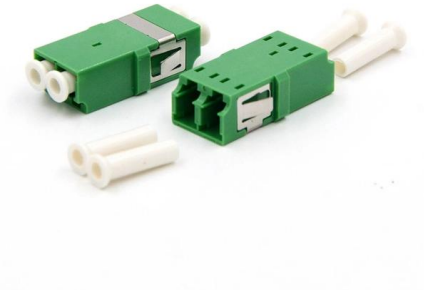
It specifies the requirements and testing for cable support systems, which are intended to support and house cables, as well as other electrical resources in electrical installations or communication systems.



Guide to cable support systems

The cable support lengths and fittings can basically be designed as cable trays, cable ladders or mesh cable trays, in which cables are routed. Fittings can, on the one hand, be used for horizontal or

[Contact Us](#)



GUIDE CABLE TRAYS TECHNICAL

Specifies requirements for metal cable trays and associated fittings designed for use in accordance with the rules of Canadian Electrical Code, Part I and the National Electrical Code®

[Contact Us](#)



Cable Tray Spacing Standards for Installation and Safety

Discover the essential cable tray spacing requirements for safe and efficient installation. Learn key standards, horizontal and vertical spacing, and more.

[Contact Us](#)

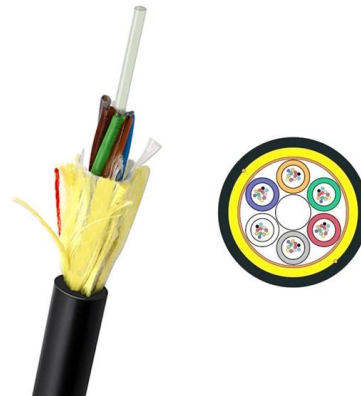




Aluminum Channel Horizontal Elbows 90°

Channel cable tray secures cables using Eagle Basket pre-punched holes. New pre-punched holes allow the secure attachment of cables to the inside of the channel

[Contact Us](#)



Network Rack Cable Management: 2026 Standards

2026 Guide to Network Rack Cable Management. Includes Rack Unit Calculator, PoE++ thermal planning, Grounding safety, and Cat6A vs Cat6 advice

[Contact Us](#)

Legrand® P302460 Itray/90HB Horizontal Cable Tray

These features allow Itray to be installed up to 30% faster than standard tray. Legrand® Cable Tray Elbow, Horizontal, Series: Itray/90HB, 12 in Tray Width, 90

[Contact Us](#)



Cable Tray Price List , Electrical Works

Cable tray are used in wiring of buildings to support electrical cables and wires that are used to distribute power, controls and communication. The

[Contact Us](#)



Standard Support Construction Of The Cable Tray RS

Any horizontal and/or vertical change of direction can be realized on site with the fittings and the connectors (from page). All changes of direction must be

[Contact Us](#)



Best Practice Guide to Cable Ladder and Cable Tray Systems

This guide covers cable ladder systems, cable tray systems, channel support systems and associated supports intended for the support and accommodation of cables and possibly other electrical

[Contact Us](#)

Best Practice Guide to Cable Ladder and Cable Tray Systems

Introduction This publication is intended as a practical guide for the proper and safe* installation of cable ladder systems, cable tray systems, channel support systems and associated supports.

[Contact Us](#)



Cable Tray Fill Rules (NEC 392)

Cable tray types, NEC fill limits, single-conductor vs multiconductor differences, ampacity derating, and when to use cable tray vs conduit.

[Contact Us](#)



Cable Tray 45 Degree Bend

Buy high-quality 45-degree cable tray bends made from copper-free aluminum. Complies with NEMA 12B standards for reliable cable management. 600mm Width, 900mm Radius.

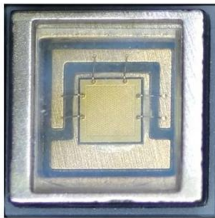
[Contact Us](#)



Cable tray installation in the substation

The installation of cable trays in substations plays a vital role in ensuring organized, safe, and efficient routing of power and control cables. Cable trays provide a strong mechanical support

[Contact Us](#)



Free download! Cable Trays and Horizontal Racks

Download free BIM objects from over 2 000 manufacturers. Choose among BIM objects for SketchUp, Autodesk, Revit, Vectorworks or ArchiCAD.

[Contact Us](#)



Document DICOS

Horizontal adjustable splice plates should be designed and placed so as to maximize the rigidity of the cable tray, unless horizontal adjustable splice plates are part of a system specifically designed for

[Contact Us](#)

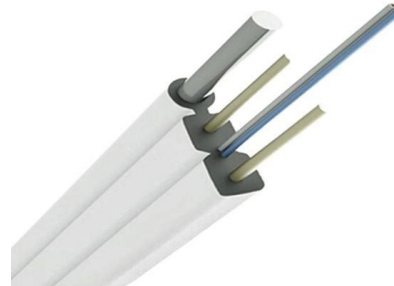




Codes and Standards , Cable Tray Institute

Covers construction and test requirements for continuous, complete nonmetallic systems of ladder, ventilated, solid bottom cable trays, or channel type trays, intended for the support of power or

[Contact Us](#)



Cable Tray Spacing Standards for Installation and Safety

Key Factors Impacting Cable Tray Spacing
Understanding cable tray spacing is key to meeting safety regulations and maintaining system

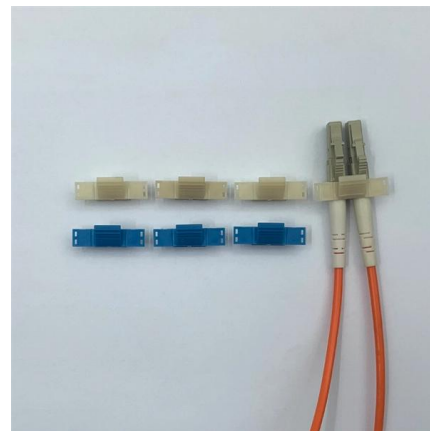
[Contact Us](#)



CABLE TRAY SYSTEMS GUIDE

FEATURES Supports horizontal/vertical and overhead cable management Durable black or gray powder coat finish Supports UTP or fiber cabling Complete family of accessories includes: wall supports and

[Contact Us](#)



IEC Standard for Cable Tray: Complete Technical Guide

One of the most recognized frameworks globally is the IEC standard for cable tray systems. This standard ensures safety, durability, and performance

[Contact Us](#)





Cable Tray, Cable Bus, Wire Mesh Cable Trays , MP

MP Husky manufacturers Cable Tray Systems, Cable Bus System, Wire Mesh/Wire,Cable Tray, & Cable Management Systems. Our cable support

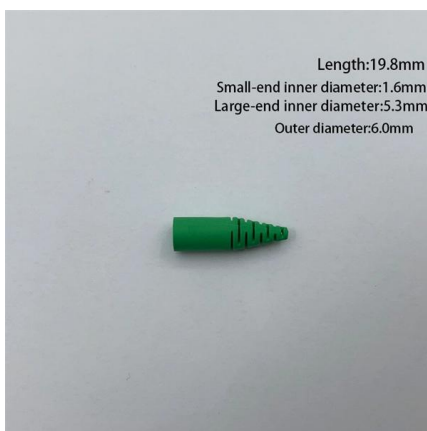
[Contact Us](#)



Cable Support Distances

Although BS 7671 touches on the subject of cable supports, it does not detail specifically what these support distances should be. Section 522.8 (Other Mechanical Stresses (A)) in that document

[Contact Us](#)



Cable Tray Support Spacing: Key Guidelines Explained

Bend cable tray

Types of Bend Cable Trays A bend cable tray is a crucial component in electrical infrastructure systems, designed to route and support cables around corners, curves, and directional changes. These trays

[Contact Us](#)



Cable Tray Technical Guide A practical guide to product selection and

Cable tray length is selected based on the load to be supported, the distance between the supports (also referred to as the span), and handling and installation constraints.

[Contact Us](#)



The NEC requires that cable trays must be supported by members at an interval specified by the cable tray manufacturer, but not more than 5 feet for

[Contact Us](#)



Cablofil Electro-Zinc Steel Cable Tray Radius Support 150mm

Electro-zinc steel radius support for wire mesh cable trays, enabling horizontal hinged direction changes. Compatible with 100-600 mm trays with 50 mm side height for controlled cable routing.

[Contact Us](#)

Cable Tray Systems: Requirements and Best Practices

Comprehensive guide to cable tray systems requirements: tray types, materials, loading, supports, bonding, routing, and best practices for safe electrical cable management.

[Contact Us](#)



Contact Us

For datasheets, pricing, or custom fiber access solutions, please visit:
<https://frindel.es>