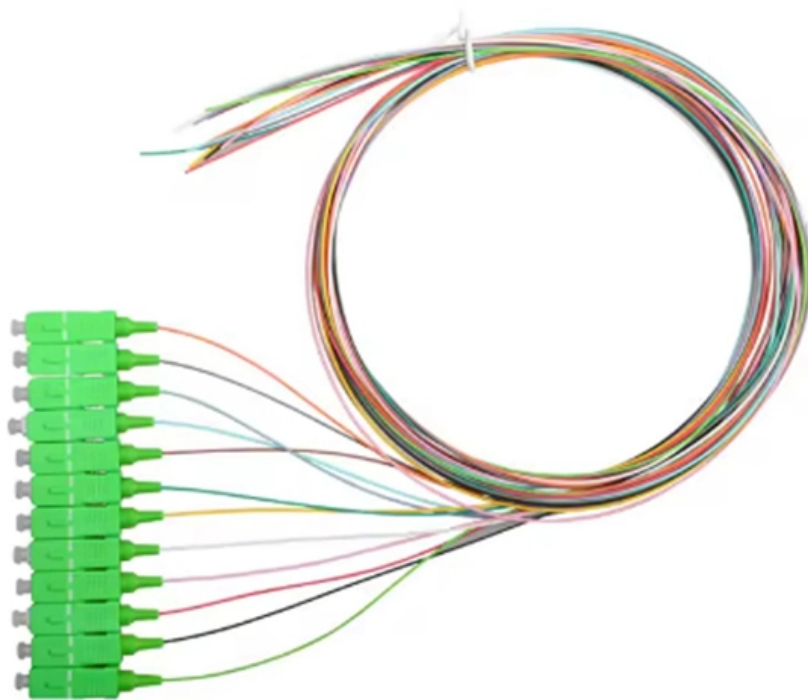


Standard for the load-bearing capacity of wire mesh cable trays





Overview

Understanding NEMA BI 50015 NEMA BI 50015 is a standard specifically designed for wire mesh cable tray systems, part of the broader category of Metal Cable Tray Systems. The latest version, released in 2024, outlines stringent requirements for: Structure, materials, and. Cable trays play a vital role in supporting electrical cables and wires in commercial, industrial, and utility installations. For proper installation, design, and maintenance, adherence to international standards is essential. Flextray wire basket features load capacity that surpasses the maximum tray fill.



Standard for the load-bearing capacity of wire mesh cable trays



NEC Standards for Cable Trays: Grounding, Fill Capacity

Wire mesh trays also simplify grounding procedures and allow for quick visual inspection, making maintenance and troubleshooting more efficient. Additionally, they effectively support tray

[Contact Us](#)

CABLE TRAY

If a wire mesh cable tray is supporting cable with a built-in equipment grounding conductor or control or signal cables, then the tray should have a low impedance path to a non-system ground to reduce

[Contact Us](#)



Wire Mesh Cable Tray Make Upgrades and

Wire Mesh Cable Tray - Lightweight, Easy to Install Wire mesh cable tray is a highly efficient, flexible, and structurally stable cable management system. It adopts an

[Contact Us](#)

Cable Tray Load Calculation and Sizing: Your Easy Guide

Worried about cable tray capacity? Learn simple cable tray load calculation steps. This guide helps you pick the right tray every time, keeping

[Contact Us](#)



Microsoft Word

Continuous, rigid, welded steel or stainless steel wire mesh cable management system. Cable tray systems are defined to include, but are not limited to, straight sections, supports and accessories.

[Contact Us](#)



Cable Tray Raceway Fill and Load Calculations

Wire Mesh Cable Tray Fill Ratio = Cross section of cable / Cross section of tray According to NEC 392.9 (B), when using ventilated tray with multi conductor

[Contact Us](#)



Understanding IEC 61537: A Comprehensive Guide to

IEC 61537 does not specify exact load-bearing values for cable trays. Instead, it defines a standardized load-testing methodology and provides the following

[Contact Us](#)

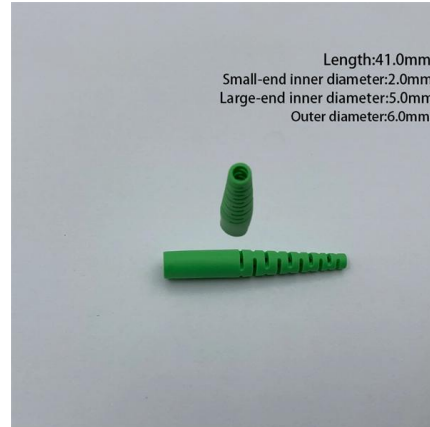




Understanding IEC 61537: A Comprehensive Guide to

IEC 61537 is a crucial international standard established by the International Electrotechnical Commission (IEC). The Chinese national standard GB/T 21762

[Contact Us](#)



Introduction to NEMA BI 50015: Wire Mesh Cable Tray

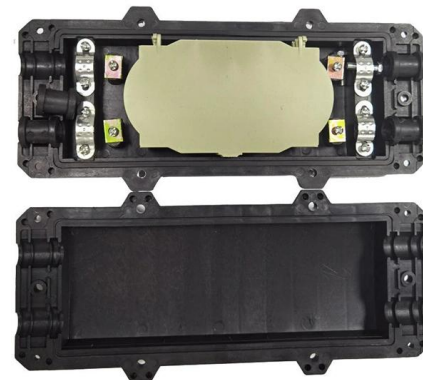
Understanding NEMA BI 50015 NEMA BI 50015 is a standard specifically designed for wire mesh cable tray systems, part of the broader category of Metal Cable

[Contact Us](#)

Best Practice Guide to Cable Ladder and Cable Tray Systems

The standard BS EN 61537 states that manufacturers must publish SWL (safe working load) details for their products, and specifies load test methods for determining the SWLs which can be supported by

[Contact Us](#)



Load Capacity Guide: How Many Power Cables Can Your Mesh Tray

Confirm support spacing meets manufacturer specs Use tray-rated cables for simplified compliance Proper planning reduces rework, speeds inspections, and ensures long-term

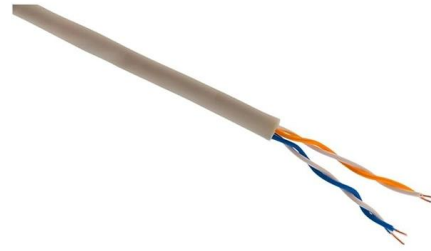
[Contact Us](#)



NEMA BI 50015: Cable Tray Standards & UL Classified

NEMA BI 50051 standard for Cat Van Loi wire mesh cable tray is the standard for Metal Cable Tray Systems. The latest edition (2024) defines strict requirements

[Contact Us](#)



Perforated Cable Tray Sizes: A Comprehensive Guide

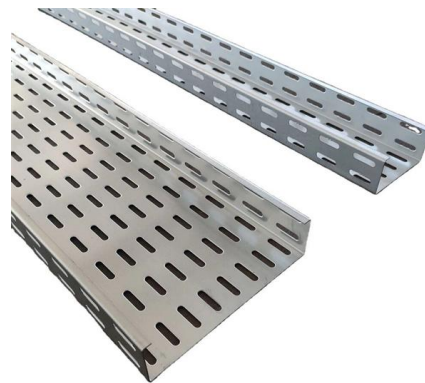
The load capacity varies based on material, thickness, and design, supporting applications from light-duty to heavy-duty loads. 5. Are there industry standards for perforated cable

[Contact Us](#)

B-Line series FlexTray load capacity white paper

B-LINE B-LINE SERIES Exceptional strength for cable support. Flextray wire basket features load capacity that surpasses the maximum tray fill. Challenge: The National Electrical Code (NEC 392-9)

[Contact Us](#)



B-Line series FlexTray load capacity white paper

Exceptional strength for cable support. Flextray wire basket features load capacity that surpasses the maximum tray fill. Challenge: The National Electrical Code (NEC 392-9) limits the amount of cable

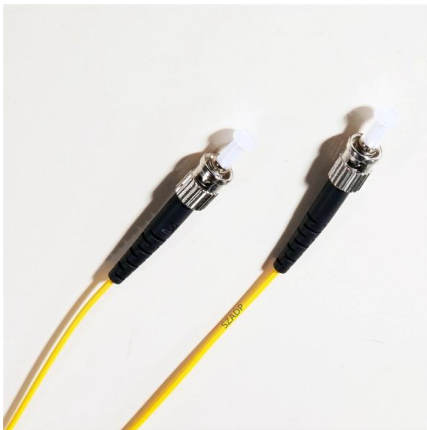
[Contact Us](#)



Technical Requirements for Wire Mesh Cable Trays

Our wire mesh cable trays undergo strict quality control and testing to ensure their reliability under various environmental conditions. Whether in industrial facilities, commercial buildings, or data

[Contact Us](#)



Standard Wire Mesh Cable Tray

These systems are typically steel wire mesh, zinc plated. b. standard widths of 1.5, 2, 4, 6, 8, 12, 16, 18, 20, and 24 inches c. standard depths of 1, 2, and 4 inches d.

[Contact Us](#)

Metal Cable Tray Systems Standard NEMA VE 1-2017

NEMA VE 1-2017 standard for metal cable tray systems. Covers construction, materials, dimensions, load capacity, and testing.

[Contact Us](#)



Codes and Standards , Cable Tray Institute

IEEE 576 - This standard describes recommended practice for installation, termination and testing of insulated power cables in cable trays used in industrial and commercial applications.

[Contact Us](#)



Choosing the right wire basket tray White Paper

Understanding load and safety factor Eaton has maintained the 1.5 safety factor used to design and document the load ratings of the Flextray wire basket tray system. (see chart below or refer to the B

[Contact Us](#)



GUIDE CABLE TRAYS TECHNICAL

NEMA VE 1-2017 Specifies requirements for metal cable trays and associated fittings designed for use in accordance with the rules of Canadian Electrical Code, Part I and the National Electrical Code®

[Contact Us](#)

Flextray load and fill recommendations

* Published load chart has not been tested with Flexmate splice. Please consult the factory for load information when using the Flexmate option. ** FLEXTRAY fill capacity is based on NEC allowable fill

[Contact Us](#)



Safe Working Load (SWL)

The wire basket cable trays shall be installed at a temperature between -5°C to +60°C to make sure the material have better mechanical resistance. And the trays shall not exceed maximum loads as

[Contact Us](#)



IEC Standard for Cable Tray: Complete Technical Guide

IEC 61537 is the internationally recognized benchmark for metal cable tray systems. It applies to cable trays made of steel, stainless steel, aluminum, or

[Contact Us](#)



26 05 36 Cable Trays for Electrical Systems

Eaton B-Line series Engineer-approved equal METAL CABLE TRAYS Description: This product category covers metal cable trays and metal cable tray systems intended for field assembly and for

[Contact Us](#)

Contact Us

For datasheets, pricing, or custom fiber access solutions, please visit:
<https://frindel.es>