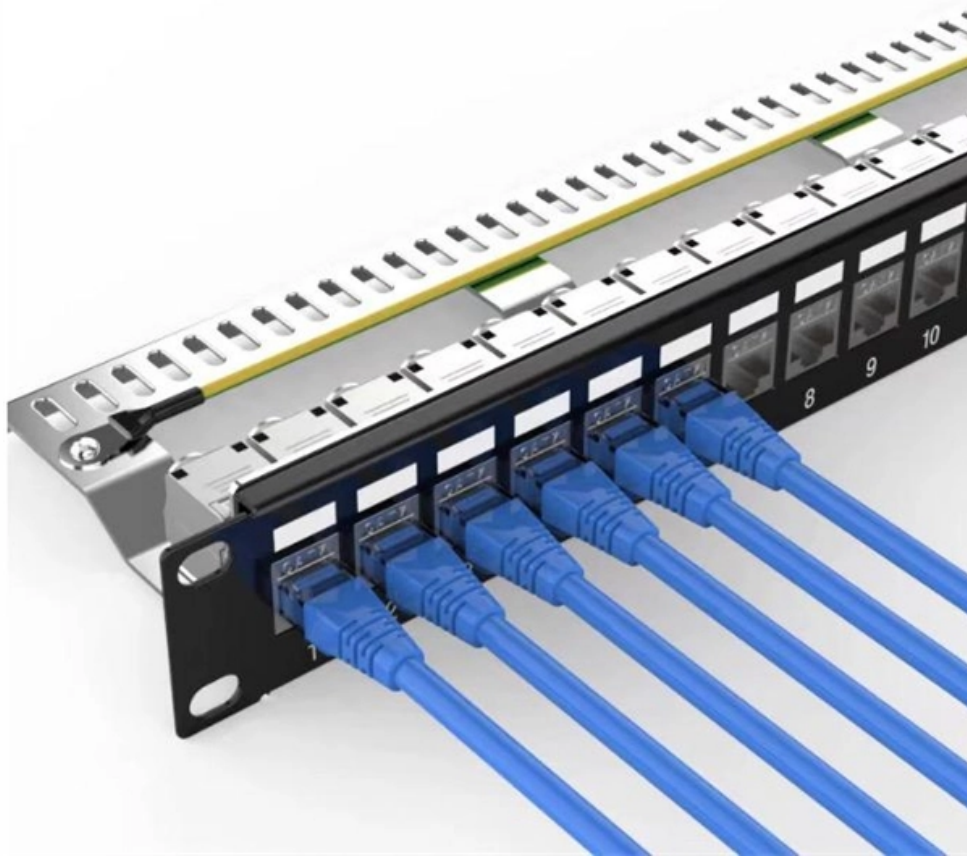


Standard configuration of 380 distribution box





Overview

This specific enclosure is designed to handle 380V three-phase power distribution, featuring a wall-mounted structure for space efficiency and a double-door configuration which provides expansive internal access and often a segregated inner door for added safety or panel viewing. Design requirements for low voltage distribution boxes cover NEC, IEC, and safety standards to ensure reliable, compliant electrical installations. It integrates functions such as overload protection, short-circuit protection, leakage protection, metering, and intelligent control. Specifically, this paper presents currently available architectures consistent with ANSI/BICSI 002-2011 and the.



Standard configuration of 380 distribution box



Electric Distribution Box OEM 380V AC Stainless Steel IP65 Durable

It supports flexible configurations for industrial and temporary power needs, meeting IEC 61439-1 and GB/T 7251.1-2023 standards. Has CCC, CE, CQC certifications.

[Contact Us](#)

Complete Set 3 Phase Distribution Board 380V Electrical Cabinet

Complete Set 3 Phase Distribution Board 380V Electrical Cabinet Distribution Panel Box, Find Details and Price about Distribution Panel Box Distribution Board from Complete Set 3 Phase Distribution

[Contact Us](#)



380 Vdc Architectures for the Modern Data Center

380 Vdc distribution topologies fully meet the objective of this standard. This paper describes, in general terms, 380 Vdc architectures that are directly equivalent to those proposed by BICSI 002 for ac

[Contact Us](#)

380kV Substation Design Archives

In this post, we will explain auxiliary transformer sizing, as per SEC/National Grid standards. Auxiliary transformers play a critical but often

[Contact Us](#)



Design requirements and standards for low voltage

Key Takeaways Always prioritize safety by following NEC and IEC standards for low voltage distribution boxes. Check voltage and current ratings to

[Contact Us](#)



HPE ProLiant DL380 Gen11

HPE Server UEFI Unified Extensible Firmware Interface (UEFI) is an industry standard that provides better manageability and more secured configuration than the legacy ROM while interacting with

[Contact Us](#)



Power Box Distribution(In stock)

SX offers high-quality, customisable power box distribution systems with factory-direct pricing. Reliable, durable, and affordable power solutions tailored to your

[Contact Us](#)

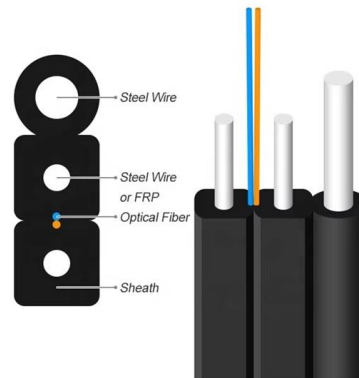




Inside a 380kV BSP: Overall Layout Drawing Explained

For BSPs (Bulk Supply Points, usually 380/132 kV or 132/13.8 kV substations in SEC standards), the layout drawing is one of the key tender and

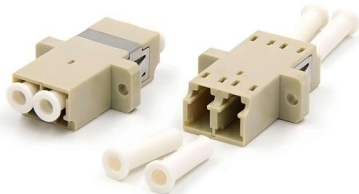
[Contact Us](#)



45 KVA Power Distribution Panel

Protective Construction: Unlike many portable power distribution boxes made of plastic and utilizing thin gauge, low grade metals in their construction, this unit is

[Contact Us](#)



Power Distribution Panel Box 380V DC Power Supply Cabinet

Power Distribution Panel Box 380V DC Power Supply Cabinet, Find Details and Price about 380V DC Power Supply Cabinet Power Distribution Box from Power Distribution Panel Box 380V DC Power

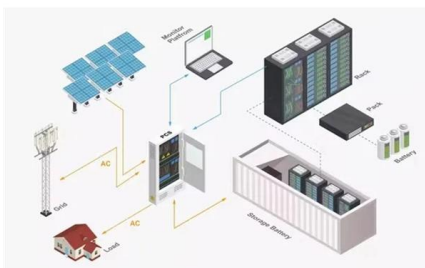
[Contact Us](#)



Hhy-380 6 Channel Power Distribution Box for PRO

Hhy-380 6 Channel Power Distribution Box for PRO Audio System, Find Details and Price about Power Distribution Box PRO Power Distribution Box from Hhy-380 6

[Contact Us](#)





Power system architectures for 380V DC distribution in telecom

Request PDF , Power system architectures for 380V DC distribution in telecom datacenters , 380V DC distribution is becoming a necessary choice for new telecom and datacenter

[Contact Us](#)



The Ultimate Guide to Circuit Breaker Wiring

Messy distribution boxes are dangerous and very hard to fix. This guide shows you how to organize circuit breaker wiring properly. You will learn to build a safe,

[Contact Us](#)

Design requirements and standards for low voltage

You need to understand the main standards and codes that guide the safe design and use of low voltage distribution boxes. These rules help you meet

[Contact Us](#)



Ultimate 380V Double-Door Distribution Box Drawing

Enhance accessibility and safety in medium-voltage environments with this essential collection of 380V Wall-Mounted Double-Door Distribution Box

[Contact Us](#)



Manufacture 380V Electrical Type Low Voltage Incoming

Manufacture 380V Electrical Type Low Voltage Incoming & Outgoing Panel Main Distribution Board Ggd, Find Details and Price about Electrical Switchgear

[Contact Us](#)



Distribution Boards

Easy Installation of outgoing The design of the pan assembly facilitates the installation of outgoing devices. Availability of mixing Mixing two different types of outgoing devices can be provided in

[Contact Us](#)

380V DC Power: Shaping the Future of Data Center Energy Efficiency

In order to find a practical solution to energy loss within current power distribution systems, the Electric Power Research Institute (EPRI) teamed with the EMerge Alliance, an industry

[Contact Us](#)



gesis® RAN DISTRIBUTION BOXE

Whereas in conventional installations, all components are wired to the main distribution board in a star configuration, which wastes a lot of time and resources, at Wieland we rely on smart decentralized

[Contact Us](#)



Area distribution boxes with connectors

Area distribution boxes with connectors 1.
GENERAL CHARACTERISTICS Boxes distribute low currents in an area equipped with 1 to 12 RJ 45 sockets. They centralise connections to ensure flexibility and

[Contact Us](#)



Power Distribution Panel

This 1,200-amp unit provides 380/220V three phase via a main circuit breaker panel. The power distribution panel provides operators the ability to safely tap into and distribute 380/220V AC power

[Contact Us](#)

Single Line Diagram for DB Systems

It includes information on the power ratings and configurations for different circuits, as well as notes on installation requirements. The design is intended for use by

[Contact Us](#)



Low-Voltage Distribution Box without Internal Barrier

With a rated voltage of 380V/220V and a current range of 250A to 6A, this distribution box adheres to the GB/T 7251.3-2017 standard, ensuring reliability and safety.

[Contact Us](#)



XL-21 Low-Voltage Power Distribution Box , 380V 800A

The XL-21 features a standardized yet flexible cabinet structure. Below are the typical dimensions for a standard configuration. This is an example of a single

[Contact Us](#)



fopostpro-tmp

A380-800 offers several payload capabilities ranging from 400 passengers in a very comfortable multi- class configuration, up to 853 passengers in an all economy class configuration.

[Contact Us](#)

Area distribution boxes with connectors

The area distribution box associated with the copper or optical feedthrough sockets allows total flexibility: the connections close to the workstation are centralised.

[Contact Us](#)



Contact Us

For datasheets, pricing, or custom fiber access solutions, please visit:
<https://frindel.es>