

Standard Requirements for Shared Support Structures for Cable Trays





Overview

The International Electrotechnical Commission (IEC) provides detailed guidelines for cable tray systems under IEC 61537. This standard outlines the construction requirements, testing methods, and performance parameters for cable trays and related support systems. Cable tray (or cable ladder) systems are a popular alternative to electrical conduit systems, as they have an outstanding record for dependable service, design flexibility and cost savings in commercial and industrial applications. For proper installation, design, and maintenance, adherence to international standards is essential. The Cable Tray ng standards, performance standards, test standards and application in this document have been tested extens ompetent professional en completely installed, without damage either to conductors or.



Standard Requirements for Shared Support Structures for Cable Trays



Criteria for Sizing, Designing, Installing and Supporting of Cable-Tray

1. PURPOSE 1.1 This engineering standard defines the criteria for sizing, designing, specifying, installing and supporting of cable-tray systems. 2. scope 2.1 This standard applies to all cable-tray

[Contact Us](#)

Understanding NEC Article 392

Master cable support systems with Understanding NEC Article 392: The Infrastructure. Learn safety rules and installation codes for commercial cable trays.

[Contact Us](#)



GUIDE CABLE TRAYS TECHNICAL

Specifies requirements for metal cable trays and associated fittings designed for use in accordance with the rules of Canadian Electrical Code, Part I and the National Electrical Code®

[Contact Us](#)



100+ Essential Questions Answered About Cable Trays:

Discover over 100 expert answers about cable trays, covering key topics like material selection, load capacity, installation methods, and maintenance.



IEC 61537 Cable Support Systems Guide

It provides information on calculating cable loads using cable weight tables to determine the maximum load a cable tray can support. It also discusses

[Contact Us](#)



7 Types of Cable Trays: How to Choose the Right One

Cable tray systems are engineered support structures designed to route, support, and protect insulated electrical cables used for power distribution,

[Contact Us](#)



Cable Tray Technical Guide A practical guide to product selection and

In designing supports for a cable tray system, consideration should be given to the loads associated with future cable additions and any additional loading that may be applied to the cable tray system (e.g.,

[Contact Us](#)





Cable support system

Using cable trays in the recognised OBO quality means that all the requirements for electrical installations on the construction site can be mastered professionally and safely.

[Contact Us](#)



Cable Tray

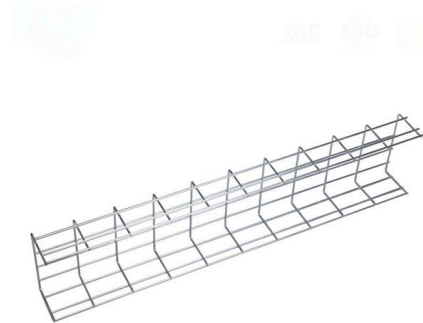
Cable Tray Cable trays are mechanical support systems that provide a rigid structural system for electrical cables, raceways, and insulated conductors used

[Contact Us](#)

IEC Standard for Cable Tray: Complete Technical Guide

The International Electrotechnical Commission (IEC) provides detailed guidelines for cable tray systems under IEC 61537. This standard outlines the

[Contact Us](#)



FactSheet

FactSheet Electrical Safety Hazards of Overloading Cable Trays According to the 2005 National Electrical Code® (NEC), a cable tray system is " unit or assembly of units or sections and

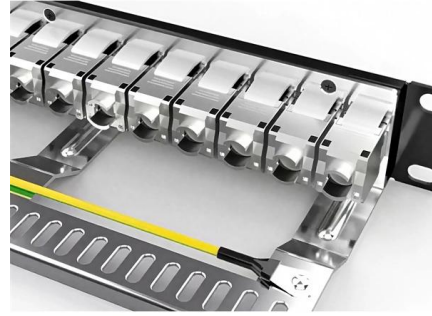
[Contact Us](#)



Guide to cable support systems

Support systems for cable support structures are used to bridge large loads and support spacings and to create complex section routes. The systems allow large support spacings of wide span systems

[Contact Us](#)



Cable Tray Spacing Standards for Installation and Safety

Other Cable Tray Spacing Requirements Spacing in Straight Sections For horizontal sections where cable trays are laid out in a straight line, the typical

[Contact Us](#)

NEC Article 392 Guide: Ensuring Compliance for Cable

Master NEC Article 392 with our comprehensive guide. Learn essential cable tray requirements for installation, grounding, and fill capacity to

[Contact Us](#)



Cable Tray Institute

The Cable Tray Institute (CTI) was founded in 1991 to support the cable tray industry by engaging in research, development, education, and the dissemination of

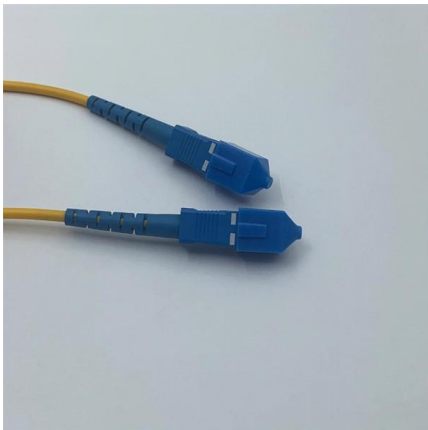
[Contact Us](#)



Codes and Standards , Cable Tray Institute

This standard specifies the requirements for nonmetallic cable trays and associated fittings designed for use in accordance with the rules of the Canadian Electrical Code (CEC) Part 1, and the National

[Contact Us](#)



Best Practice Guide to Cable Ladder and Cable Tray Systems

Introduction This publication is intended as a practical guide for the proper and safe* installation of cable ladder systems, cable tray systems, channel support systems and associated supports.

[Contact Us](#)



CABLE TRAYS GENERAL INFORMATION AND

General information of Kiraç Metal Cable Trays and installation guide are arranged in accordance with IEC 61537 standards and this document has been prepared for

[Contact Us](#)



Standard Support Construction Of The Cable Tray RS

With the RS 60 cable tray installation system, Niedax offers a standard support structure installation type that allows integrated circuit integrity maintenance.

[Contact Us](#)



Guide to cable support systems

It specifies the requirements and testing for cable support systems, which are intended to support and house cables, as well as other electrical resources in electrical installations or communication systems.

[Contact Us](#)



B-Line series Cable Tray Design Considerations

As an industry leader in cable tray, Eaton offers one of the widest ranges of cable management solutions available in the market today with its B-Line series portfolio. With unmatched quality and service, we

[Contact Us](#)

Cable Tray Technical Guide A practical guide to product selection and

Cable Tray Technical Guide A practical guide to product selection and installation This guide for engineers and installers has been developed by ABB as a practical reference regarding cable tray

[Contact Us](#)



Westinghouse AP1000 Design Control Document Rev. 19

The basic stress allowables for cable tray supports utilizing rolled structural shapes are in accordance with ANSI/AISC N-690 and the supplemental requirements described in subsection 3.8.4.5.2.

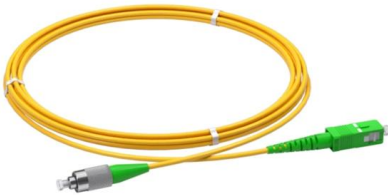
[Contact Us](#)



Cable Tray Support Spacing: Key Guidelines Explained

Explore the essential cable tray support spacing requirements for safe and efficient installations. Learn NEC guidelines for perforated, ladder, and wire

[Contact Us](#)



910533-3_EN

Cable support systems are generally designed with at least 50 % reserve space available for each tray. Cable tray types, supports (types and spacing) and securing systems are selected and designed

[Contact Us](#)

Unistrut Cable Tray Support Structures

Cable Tray systems are often used to support electric power, signal, control, instrumentation, and communication cables used for power distribution and

[Contact Us](#)

MORE CASES PRESENTATIONS



B-Line series Cable Tray Design Considerations

Our wind certification report provides you with list of acceptable B-Line series cable tray supports, fittings and covers based off of the environmental conditions, cable loading, and type of cable tray in your

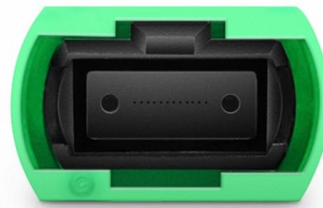
[Contact Us](#)

Cable tray



In the electrical wiring of buildings, a cable tray system is used to support insulated electrical cables used for power distribution, control, and communication.

[Contact Us](#)



Contact Us

For datasheets, pricing, or custom fiber access solutions, please visit:
<https://frindel.es>