

# **Standard Requirements for Fixed Base Plates of Distribution Boxes**





## Overview

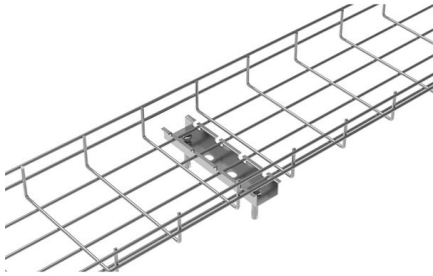
---

The AISC Specification for Structural Steel Buildings, particularly Section J8, provides comprehensive guidance on bearing strength and base plate design. It stipulates requirements for enclosure materials, installation dimensions, the mandatory "one equipment, one switch, one RCD" rule, mechanical structure, earthing systems, component selection and marking. All provisions comply with national standards and design requirements to ensure safe and. The body of the boxes shall have sufficient re- enforcement with suitable size of channels keeping a provision for fixin andle conforming to general. Distribution boxes and switch boxes shall be manufactured from cold-rolled steel sheet or flame-retardant insulating material Steel Thickness: Switch box enclosures:  $\geq 1$ .



## Standard Requirements for Fixed Base Plates of Distribution Boxes

---



### Guide to cable support systems

For example, a mounting plate is often used for junction boxes or device supports. The standard defines accessories as components such as barrier strips, covers or cable protection rings. The standard

[Contact Us](#)

### Business Documentation (DBD)

1. Purpose The purpose of this document is to detail the technical requirements of Northern Powergrid (the company) in relation to retrofit cable boxes for ground mounted distribution transformers or

[Contact Us](#)



### TECHNICAL SPECIFICATION FOR OUTDOOR TYPE DISTRIBUTION FEEDER PILLAR BOX

1. Scope: This specification covers technical requirements of design, manufacture, testing at manufacturer's works, packing, forwarding, supply and unloading at store/site and performance of

[Contact Us](#)



### Area distribution boxes with connectors

The area distribution box associated with the copper or optical feedthrough sockets allows total flexibility: the connections close to the workstation are centralised.

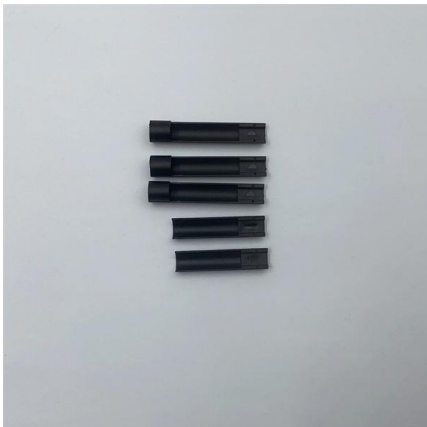
[Contact Us](#)



### **TECHNICAL SPECIFICATION I.R.O. 63,100,160 & 315 KVA**

Distribution Boxes shall have Isolator (Switch Disconnecter) on incoming circuit and Porcelain CUTOUT fuse base disconnecter on outgoing circuits with necessary interconnecting Bus Bars.

[Contact Us](#)



### **Manufacturing Requirements for Electrical Distribution Box & Switch Box**

Mounting dimensions on the plate shall comply with relevant standards. (3) Component Configuration by Box Type: (1) Main Distribution Board (MDB): Configuration depends on RCD

[Contact Us](#)



### **Quality Control for Installation and Construction of Electrical Riser**

Master the key quality control methods for electrical riser & distribution box installation. Ensure safety, compliance, and prevent hazards in building electrical systems.

[Contact Us](#)



### Conformity to specifications and standards

The development, testing and production per national regulations, European Standards and special approvals document the high safety standard of els brand

[Contact Us](#)



### TECHNICAL SPECIFICATION FOR LT DISTRIBUTION BOX

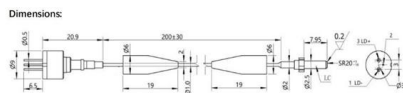
General Technical Particulars for LT Distribution Boxes : - The L.T. Distribution Boxes should be of the dimensions as per the drawing & details in the table furnished.

[Contact Us](#)

### Electric Panel Installation Method Statement

This document provides a method statement for installing and terminating electric panels and distribution boxes. It outlines 4 steps: 1) Pre-installation preparation

[Contact Us](#)



### Technical Specifications for Outdoor LT Distribution boxes with

Scope: The scope of this specification covers Weather / Vermin proof LT distribution boxes (LTD) with controllers, MCCB, MCB, Bus bars, Contactors, CT's, Energy Meter, LT gas filled fixed capacitor, DC

[Contact Us](#)



## Technical Specifications for Distribution Boxes and Switch Boxes

The steel plate used for the enclosure of distribution boxes shall have a thickness of not less than 1.5mm, and the cabinet body of power distribution cabinets shall be made of cold-rolled steel plate

[Contact Us](#)



## Base Plate Design: American Standards AISC 360

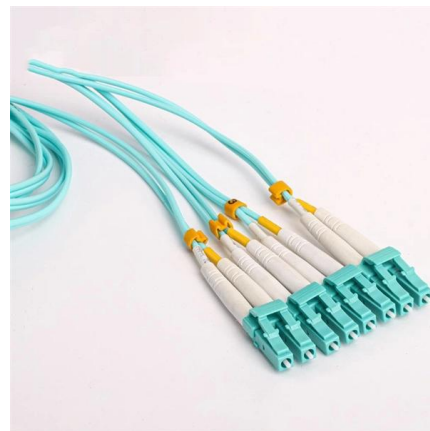
There is two main design requirements: to design against crushing of the concrete footing by calculation of the footing's allowable bearing strength, and to determine

[Contact Us](#)

## Installation requirements for distribution boxes

Installation of closed or explosion-proof electrical facilities; distribution box electrical components, meters, switches and lines should be arranged neatly, firmly installed, easy to operate.

[Contact Us](#)



## Key Points Of Installation And Collocation Of Distribution Box In

Distribution box and switch box shall be made of iron plate or high-quality insulating material, and the thickness of iron plate shall be greater than 1.5mm The electrical equipment in the distribution box

[Contact Us](#)

## Key Points Of Distribution Box Installation



The distribution box and switch box shall be made of iron plate or high-quality insulating material, and the thickness of iron plate shall be greater than 1.5mm; the electrical appliances in the distribution

[Contact Us](#)



### PRODUCT MANUAL FOR BOXES AND ENCLOSURES FOR

Following aspects of the product shall be taken into consideration for grouping of different varieties of 'Boxes and Enclosures for Accessories for household and similar fixed electrical installations' as per

[Contact Us](#)



### Technical Specs for Distribution Boxes , PDF , Screw

This document provides technical specifications for distribution boxes (DTBs) used for housing electric connections. It outlines: 1) The construction requirements for

[Contact Us](#)



### Base Plates

Understanding the design principles outlined in the AISC (American Institute of Steel Construction) standards is essential for structural engineers to ensure safe, economical, and code

[Contact Us](#)

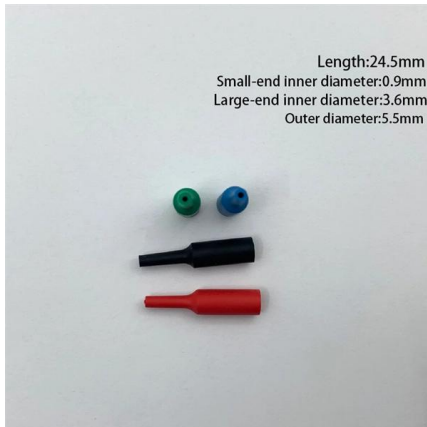




## Specific design requirements for distribution box.

The various indexes of the boards of distribution boxes or distribution cabinets must meet the relevant requirements of the state. All distribution boxes or distribution cabinets shall be made of cold-rolled

[Contact Us](#)



## Primer: Base Plate Design

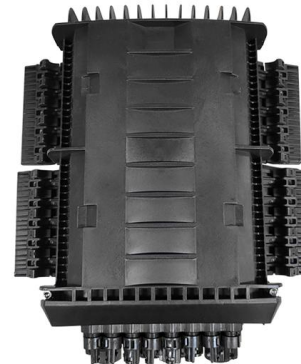
Rather than specifying an unique designs for every single base plate in the building, the better approach is to come up with reasonable number of base plate design

[Contact Us](#)

## Manufacturing Requirements for Electrical Distribution Box & Switch

Metal mounting plates shall be electrically bonded to metal enclosures. Components (including sockets) shall be firmly secured to the mounting plate in their designated positions, without

[Contact Us](#)



## Cautions and Requirements for Installation of

Distribution box is a low-voltage distribution device which assembles switchgear, measuring instruments, protective appliances and auxiliary equipment in a closed

[Contact Us](#)



### Requirements for distribution box at construction site

The distribution box shall be made of iron plate or other fire-proof insulating materials to achieve ventilation, heat dissipation, rain proof and fire-proof. 2. The electrical appliances in the box shall be

[Contact Us](#)



### Safety requirements of distribution box

The distribution box has the characteristics of small size, simple installation, special technical performance, fixed location, unique configuration function, not limited by

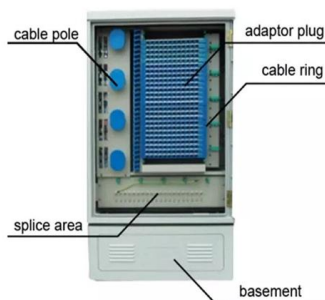
[Contact Us](#)

### Safety requirements for distribution box

Power and lighting shall be set separately. 2? The manufacture and installation of distribution box and switch box shall meet the following requirements: (1) The distribution box shall be made of iron plate



[Contact Us](#)



### 1.An Ultimate Guide for Metal Distribution Boxes

1) Metal Distribution Boxes Constructed from steel, aluminum, or cast iron, metal distribution boxes are highly durable and resistant to mechanical damage. Ideal

[Contact Us](#)



## Electrical Distribution Fundamentals Design Guide Data Bulletin

For the new college graduate from a four-year electrical engineering curriculum working in the field of commercial and industrial power systems, this guide can serve as a starting point for

[Contact Us](#)



## Contact Us

---

For datasheets, pricing, or custom fiber access solutions, please visit:  
<https://frindel.es>