

# **Standard Configuration Parameters of Core Switches**





## Standard Configuration Parameters of Core Switches

---



### User Manual Surface Modular Switch

Through the standby mode it is possible to keep the Surface Modular Switch in a stand-by state, setting a level of brightness of the LEDs and reactivate the backlighting of the buttons only in operation or

[Contact Us](#)

### 8 Steps to Configure Your Network Switch

Follow these simple best practices to set up a new network switch. Just like riding a bicycle, nobody's born knowing how to setup a network switch. And this process is a little more advanced than, say,

[Contact Us](#)



### Introduction to Core Switch Configuration

In this switching, transmission is determined not only by MAC address (layer 2 bridge) or source/destination address (layer 3 routing), but also by TCP/UDP (layer 4) using port Numbers that

[Contact Us](#)



### Basic Switch Concepts and Configuration

To configure global switch parameters such as the switch hostname or the switch IP address used for switch management purposes, use global configuration mode. To access global configuration mode,



### Features and Applications of Core Switches

Core Switches also provide intelligent routing, QoS assurance, security, scalability, and manageability. A well-matched Core Switch configuration is a strong support for building powerful,

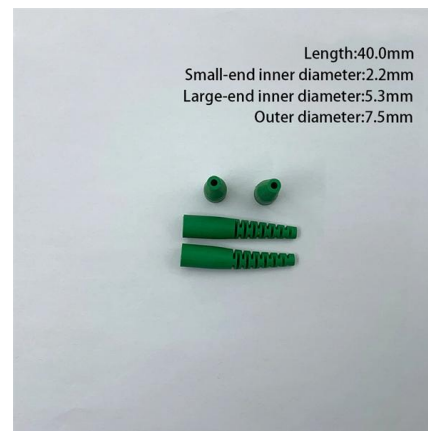
[Contact Us](#)



### FS Community

Hier sollte eine Beschreibung angezeigt werden, diese Seite lässt dies jedoch nicht zu.

[Contact Us](#)



### What is Core Switch and How to Choose?

Discover what a core switch is and learn how to choose the right one for your network. Explore key features in selecting a core layer switch. Make

[Contact Us](#)



## Simplify Network Configuration with Switch Templates: A

A switch template is a pre-defined configuration file or script that contains settings and parameters for configuring network switches. These templates are used by network administrators to streamline the

[Contact Us](#)



## 8 Steps to Configure Your Network Switch

Learn how to setup a network switch with ease. Switches allow you to send and receive information efficiently and securely. Get setup today!

[Contact Us](#)

## Introduction to Core Switch Configuration

A switch that functions as part of a router and operates at the third layer of the OSI network standard model, the network layer. The most important purpose of the layer 3 switch is to speed up the data

[Contact Us](#)



## Core Switch Specifications and Features

The document outlines specifications for a layer 3 core switch, including that it should support: - At least 800Gbps switching capacity and 250Mbps throughput for IPv4

[Contact Us](#)



## Guide to Basic Switch Configuration , Auvik

Switch configuration on your own can seem like a daunting task. Use this handy guide to get your network switch up and running with ease.

[Contact Us](#)



## Research Design & Standard Organization Telecom Directorate

Research Design & Standard Organization Telecom Directorate Reasoned document for specification no. RDSO/SPN/TC/83/2020 Rev 2.0 of LAN Switch

[Contact Us](#)

## Supply, Installation, and Configuration of Core Switch

Training and Handover o Provide training to the network administrators on the configuration and operation of the integrated solution. Handover the integrated solution to the network team with all

[Contact Us](#)



## News

In the realm of network engineering, understanding core switches is critical for ensuring efficient data handling and seamless communications. Core switches

[Contact Us](#)



## Initial Switch Configuration

Whether the configuration deployment of a switch is completed all at once or done in phases, the basic switch settings must first be configured. The initial management configuration includes setting IP

[Contact Us](#)



## SME Network Solution Typical Configuration Examples

"Gateway (S380) + Core Switch + Access Switch + AP" Networking: Local Entire Network Deployment (EasyWeb) "Gateway (AR720) + Core Switch + Access Switch + AP" Networking: Huawei eKit Cloud

[Contact Us](#)



## What Is a Core Switch in Networking?

What Is a Core Switch in Networking?  
Understanding the Backbone of Your Network A core switch in networking serves as the high-capacity

[Contact Us](#)



## Basic Cisco Switch Configuration Example in 10 Steps

Unlike other lower class switch vendors (which are plug-and-play), the Cisco switch needs some initial basic configuration in order to enable management, security

[Contact Us](#)





## LAN Switching Configuration Guide

If necessary, refer to the IP configuration chapters in the Cisco IOS XE IP Routing Protocols Configuration Guide, Release 2, for guidelines on configuring IP.

[Contact Us](#)



## Support

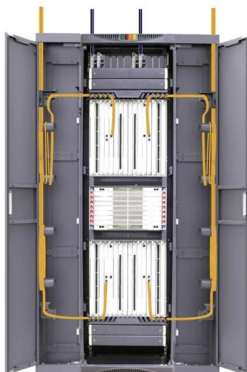
Core switch 1 operates as the master to process intranet packets. When core switch 1 fails or the upstream link of core switch 1 fails, core switch 2 takes over to process intranet packets.

[Contact Us](#)

## Understanding Core Switch: What It Is and How to

In the realm of system networking, three key types of switches are frequently mentioned: access switches, aggregation switches, and core switches.

[Contact Us](#)



## Core Switch Specifications and Features

Core Switches - Free download as Word Doc (.doc / .docx), PDF File (.pdf), Text File (.txt) or read online for free. The document outlines specifications for a layer 3

[Contact Us](#)

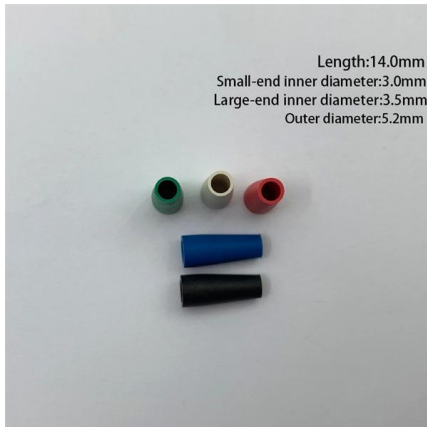
## Core Switch vs. Distribution Switch vs.



## Access Switch

Owing to the importance of core switches, the quality and performance of the core network switches must be tested. To ensure that the switches can perform tasks

[Contact Us](#)



## Network Switch Components and Technical Analysis

Depending on device configurations and coverage requirements, they can be further divided into Layer 2 and Layer 3 switches: Layer 2 switches are used for internal company data flow, while Layer 3

[Contact Us](#)



## Differences Between the Core Switch and Normal

Differences between the core switch and ordinary switch The difference between ports The number of standard switch ports is generally 24-48,

[Contact Us](#)



## Basic Switching Concepts and Configuration

Basic Switch Configuration (2.1) Basic switch administration should be mastered by a switch administrator. This includes familiarity with the hardware as well as basic port configuration.

[Contact Us](#)



## Understanding the Core Switch: Key Differences and Uses

This determines network efficacy, dependability, and the speed at which information is exchanged. This article will discuss critical aspects of core

[Contact Us](#)



## Contact Us

---

For datasheets, pricing, or custom fiber access solutions, please visit:  
<https://frindel.es>