

Spectrometer Serial Connection





Spectrometer Serial Connection



StellarNet Miniature Spectrometer Manual

For multi-beam applications, up to eight units may be connected via USB-2 simultaneously. All spectrometers enable optical signal input via single strand optical fibers with standard SMA 905

[Contact Us](#)

How to remotely control a spectrometer?

The spectrometer has one USB connector and two BNC connectors for trigger signals. For our research, we want to access the spectrometer remotely and wirelessly instead of connecting

[Contact Us](#)



Building Your Own Spectrometer

This tutorial offers some considerations on construction of a DIY spectrometer, and shows how to connect one sensor, the AMS AS7341 11-channel spectral sensor

[Contact Us](#)



THERMO SCIENTIFIC NICOLET SUMMIT USER

View and Download Thermo Scientific Nicolet Summit user manual online. FTIR Spectrometers. Nicolet Summit measuring instruments pdf manual download.



User Manual Spectrometers, Software, and Accessories

A spectrometer must be optimized for system sensitivity as well as resolution across its wavelength range. StellarNet follows strict quality control and internal standards to make sure all spectrometers

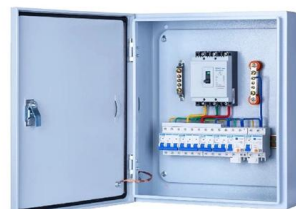
[Contact Us](#)



Accessing the spectro through USB , Hackuarium open-hardware

It is possible to control the device from the Serial over USB. You could use for example the command screen in a bash if you're used to it, but the easiest is probably to use the "Serial Monitor" of the

[Contact Us](#)



Ocean Optics USB4000 Installation And Operation Manual

Page 12: Interface Options Interface Options The USB4000 has both USB and serial port connectors (with the use of an adapter), enabling you to connect the spectrometer to a computer via a USB or

[Contact Us](#)





Acton Series SP-2500i Operating Instructions

(If the buttons are grayed out, exit the program, connect an Acton Series spectrometer, wait for the spectrometer to initialize, and then restart the program.) Click on the Operation button and a screen

[Contact Us](#)



connecting a spex 1702 Spectrometer via rs232

I'm trying to connect an old Spex 1702 Spectrometer to our computer via RS232. I have some downloaded vi's from the HORIBA site that are supposed to work with this series.

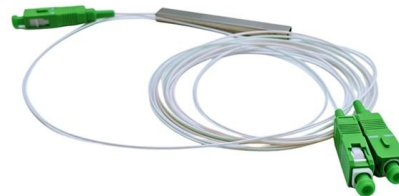
[Contact Us](#)



Building Your Own Spectrometer

Both are good meters, but not cheap. Fortunately, there are some affordable spectral sensors that you can connect to a microcontroller to make your own

[Contact Us](#)



Understanding serial protocols

Serial protocols are used in a very wide variety of applications. Learn more about different serial protocols and how to decode them using an oscilloscope.

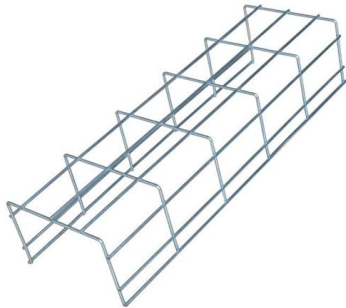
[Contact Us](#)



USB Spectrometer , Low Price Optical Spectroscopy

The Ossila USB Spectrometer can be controlled using a simple serial command library; the device will appear as a COM port when connected to a PC.

[Contact Us](#)



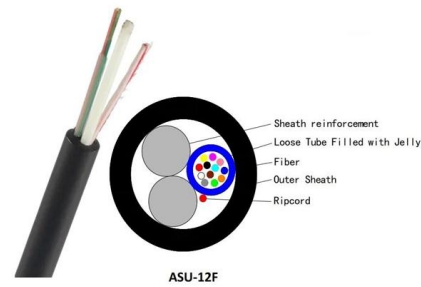
ISQ EC and ISQ EM Mass Spectrometer Operating Manual (Revision E)

3.1 Mass Spectrometer Operating Principle The ISQ EC and ISQ EM mass spectrometers have been specifically designed and engineered for liquid chromatography (LC) or ion chromatography (IC)

[Contact Us](#)



Connecting your color spectrophotometer to OnColor with a USB adapter



python-seabreeze -- python-seabreeze documentation

python-seabreeze python-seabreeze is the easy way to access your Ocean Optics spectrometers from python. It wraps the SeaBreeze library provided by Ocean Optics to communicate with the

[Contact Us](#)



Getting Serial Data Out Of An Old Spectrophotometer

With that achieved, was able to whip up a simple VB6 program to collect data from the spectrometer and put it in a CSV file for further analysis.

[Contact Us](#)



While you can always install a serial port, an easier way to connect to the PC is to use a Serial to USB adapter. This is a special cable that plugs into the serial port output of your spectrophotometer on

[Contact Us](#)



Serial Communication Protocol on Ocean Spectrometers

Below is an example list of items for connecting your spectrometer to a PC/Host device. There is also a diagram that shows how all the listed parts are connected.

[Contact Us](#)



Connecting a Spectrometer to a Microscope

Seamlessly connect a spectrometer to a microscope for micro-spectroscopy studies, enabling detailed spectral analysis of a range of microscopic samples.

[Contact Us](#)



seabreeze.spectrometers -- python-seabreeze documentation

Spectrometer serial numbers are visible in the repr string of each `SeaBreezeDevice` or their `serial_number` attribute. Parameters ----- serial : `str`, optional the spectrometer's serial number.

[Contact Us](#)





User Manual: Ocean SR Series

Each Ocean SR spectrometer contains wavelength calibration coefficients, linearity coefficients, and a serial number unique to each spectrometer. The spectroscopy application reads these values directly

[Contact Us](#)



Getting Started with Spectrometers

Home Support Getting Started with Vernier Sensors Getting Started with Spectrometers What device are you connecting your spectrometer to?

[Contact Us](#)

StellarNet User Manual 2022

StellarNet has a long history in the spectroscopy business. Begun in the early 1990's, StellarNet revolutionized the miniature spectrometer market by creating the first holographic concave grating

[Contact Us](#)



PERKINELMER SPECTRUM 100 SERIES USER

How do I connect the PerkinElmer Spectrum 100 Series spectrometer to a PC or network? To control your PerkinElmer Spectrum 100 Series instrument from a

[Contact Us](#)



Interfacing RS232 serial instruments to a TCP/IP network

Most modern electronic instruments including bar code scanners, measuring tools and laboratory instruments (balances, electrochemistry meters, spectrometers, spectrophotometers, measuring

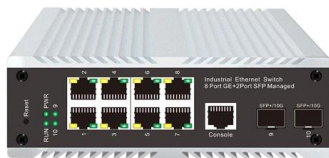
[Contact Us](#)



User Manual Spectrometers, Software, and Accessories

Page topic: "User Manual Spectrometers, Software, and Accessories 2022 - StellarNet Inc". Created by: Ana Simpson. Language: english.

[Contact Us](#)



UV-VIS Spectrophotometer Troubleshooting and FAQs

It won't calibrate or is giving very noisy data. Why can't my device find Go Direct Spectrometer when I try to connect via Bluetooth? Experiments: Do you have labs written for your

[Contact Us](#)



RS232 Serial Communication Protocol: Complete

Complete RS232 serial communication guide covering protocol basics, DB9 pinout, voltage levels, applications, and troubleshooting. Updated for 2025

[Contact Us](#)





My Spectrometer is not working properly. It won't calibrate or is

When you reach out, be sure to include: - The serial number of your spectrometer - The software (Spectral Analysis or LabQuest) and connection type (USB or BLE) you are using - A

[Contact Us](#)



Contact Us

For datasheets, pricing, or custom fiber access solutions, please visit:
<https://frindel.es>