

Specifications of optical cables for traffic signal lights



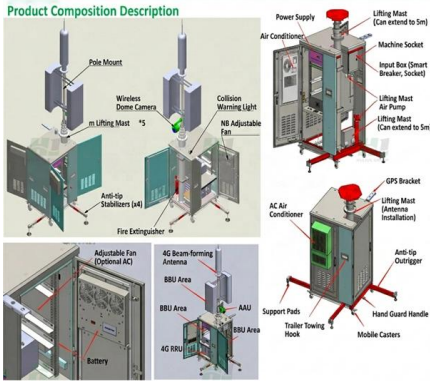


Overview

1 cable are generally used in permanent traffic light systems and urban traffic management systems. Netceed is a global leader and one-stop shop with a comprehensive portfolio of network core to service delivery edge materials, complete end-to-end solutions, and value-added services with unmatched traffic control, telecom, and broadband industry expertise. (2) 14 AWG, IMSA Spec 20-1 Signal Cable, Jacket: PE, 600V, Stranded Bare Copper Conductor, Direct Burial, Black, Length: 5000 ft Reel.



Specifications of optical cables for traffic signal lights



Traffic Control Light: Things to Know Before Installation

Learn the key steps for installing a traffic control light, including legal compliance, safety, technical planning, and budgeting

[Contact Us](#)

Traffic Signal Cable , Traffic Cable , One Stop Buy

Our Traffic Signal Cable line from Omni Cable, Belden, General Cable, Lake Cable, and Tappan consists of several cable types, with each rated at 600 Volts. The first variety, made up of IMSA 19

[Contact Us](#)



MATERIAL SPECIFICATIONS

Traffic signal cable shall be manufactured in accordance with the requirements of Underwriters' Laboratories, SCDOT, IMSA 20-1, ROHS, Federal specifications, and the National Electric Code.

[Contact Us](#)



MATERIAL SPECIFICATIONS

Description This specification describes requirements for furnishing traffic signal, loop lead-in, pedestrian signal, and pedestrian push button Electrical Cable.

[Contact Us](#)



SPECIFICATIONS

Specifications - NYCDOT specifications for furnishing all labor and material necessary for installation, removal and maintenance of traffic signal and intelligent transportation systems

[Contact Us](#)

TRAFFIC SIGNAL & LIGHTING technical specifications

1.1 DESCRIPTION Traffic signal and street lighting modifications are to be performed at xxxxxxxxxxx and xxxxxxxxxxx in the City of Sunnyvale along with civil improvements per the Contract documents. The



[Contact Us](#)

EFFICIENT FIELD TERMINATION

- 1. PREPARE** - Strip and clean the fiber
- 2. INSERT** - Fast and easy insertion
- 3. LOCK** - Secure connection achieved

No Polishing | No Epoxy

Eliminates cable excess length and pigtail splice storage. Designed for high-efficiency onsite installation.

A Guide to Traffic Signal Cable

All have a specific application, and each application dictates the cable construction, compounds, conductor, configuration, and installation type. This

[Contact Us](#)



Traffic Signal Cable , IMSA Certified & Loop Detector

Find IMSA-certified traffic signal cables, loop detector wires, and underground cables at OmniCable.

[Contact Us](#)



PART 7 STREET LIGHTING AND TRAFFIC SIGNAL SYSTEMS

Connectors shall be field-installable and perfectly matched to the cable used. Optical fiber connectors shall satisfy all of the interface parameters of equipment components as may be defined by the

[Contact Us](#)

Traffic Signal Cable

Optical Control Cable, 20 AWG, 3 Conductors, 7x28 Stranded, Black, Jacket: PVC, Length: 5000 ft Reel. Category: IMSA Traffic Signal Cable. (16) 14 AWG, IMSA Spec 20-1 Signal Cable, Jacket: PE,

[Contact Us](#)



Traffic Signal Cable , WireAndCableYourWay

Traffic signal cables are part of permanent traffic light systems and are built to withstand the harshest of environmental factors and underground conditions.

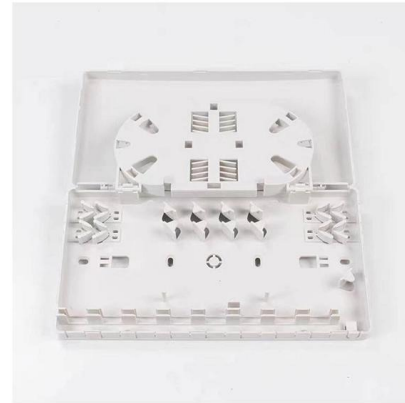
[Contact Us](#)



Traffic Signal Program Handbook

The purpose of this Traffic Signal Program Handbook (TSPH) is to advance the use of objectives and performance-based approaches to traffic signal management in order to improve design and

[Contact Us](#)



The New ITE Light-Emitting Diode Traffic Signal Specifications: A

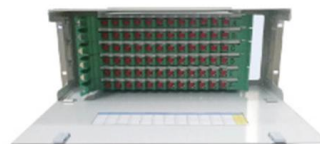
The Institution of Transportation Engineers has recently updated its specification for light-emitting diode (LED) circular traffic signals. This paper describes the new requirements of the specification, which

[Contact Us](#)

TRAFFIC SIGNAL CABLE IMSA 20-1

Southwire's IMSA 20-1 cable meets the requirements of International Municipal Signal Association IMSA 20-1 specification. Rated for use in traffic signal, traffic control systems, underground conduit and

[Contact Us](#)



Products

Traffic cables manufactured for signaling, control, communications and detection in a Traffic Signal System. Manufactured in accordance with IMSA, CSA and MTO standards.

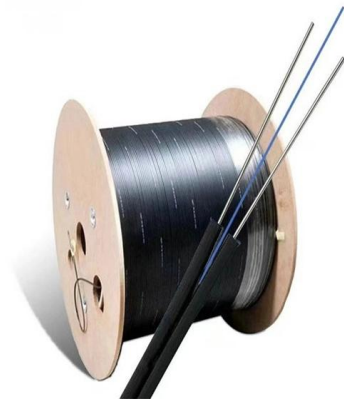
[Contact Us](#)



Transport and Main Roads Specifications MRTS93 Traffic Signals

The issue-for-construction (IFC) design will include plans and specifications for the traffic signal installation focusing on their functionality and how they integrate with the traffic system.

[Contact Us](#)



BS 6346 ARMoured PVC TRAFFIC SIGNAL CABLE

Armoured PVC traffic signal cable used to connect traffic signal equipment or other applications that require high core configurations with tough mechanical robustness.

[Contact Us](#)

LED Traffic Signals

& nbsp; Equipment and Materials Standards of the Institute of Transportation Engineers (PDF) Traffic Signal LED Module Specification Workshop and Informational Report for Snow Conditions & nbsp;

[Contact Us](#)



2020 General Traffic Signal Construction Specifications General Notes

he new pedestrian push button will be the Vendor's responsibility. If the pedestrian push buttons are installed at an operational traffic signal and there are spare wires in the existing multiconductor signal

[Contact Us](#)



Section B - Part 3 - Supplemental Standards for Traffic Signal and

Section B - Part 3 - Supplemental Standards for Traffic Signal and Street Lighting (STS) General This specification covers the requirements for electrical work and is applicable to all electrical work in the

[Contact Us](#)



Sustaining Member

Advanced Digital Cable is the manufacturing leader of cable for the traffic industry ADC is a proud Sustaining Member of the IMSA organization and is the largest manufacturer in North America of

[Contact Us](#)

Detail Specifications for Cable Installation and Cable Splices

The Contractor shall install the cable into the conduit connecting any two traffic signal poles or two street light poles with traffic signals, without splices from pole to pole.

[Contact Us](#)



Specifiation for Traffic Signal Cable

4.1.2. The traffic signal cable shall consist of uncoated copper individually insulated with heat stabilized polyethylene laid up in a compact cable form and bound with suitable tape. The cable core shall be

[Contact Us](#)



TRAFFIC & SIGNALING PRODUCT CATALOG

Our inventory encompasses a comprehensive range, spanning traffic signal hardware and equipment, building wire, fiber optic, coax, composite camera cable, and a complete selection of associated

[Contact Us](#)



How to Choose Power Cable for Electronic Traffic Lights

Select the right power cable for your electronic traffic light by considering voltage, ampacity, insulation, and certification for safe, reliable

[Contact Us](#)

TRAFFIC & SIGNALING PRODUCT CATALOG

We offer a wide range of products for various municipal transportation applications: Traffic Communication, Inductive Loop Detection and Traffic Signal Control. Manufactured in ISO-certified

[Contact Us](#)



Microsoft Word

Purpose The purpose of this specification is to provide the minimum performance requirements for 300 mm (12 in) LED traffic signal modules. An LED signal module shall be capable of replacing the

[Contact Us](#)



Contact Us

For datasheets, pricing, or custom fiber access solutions, please visit:
<https://frindel.es>