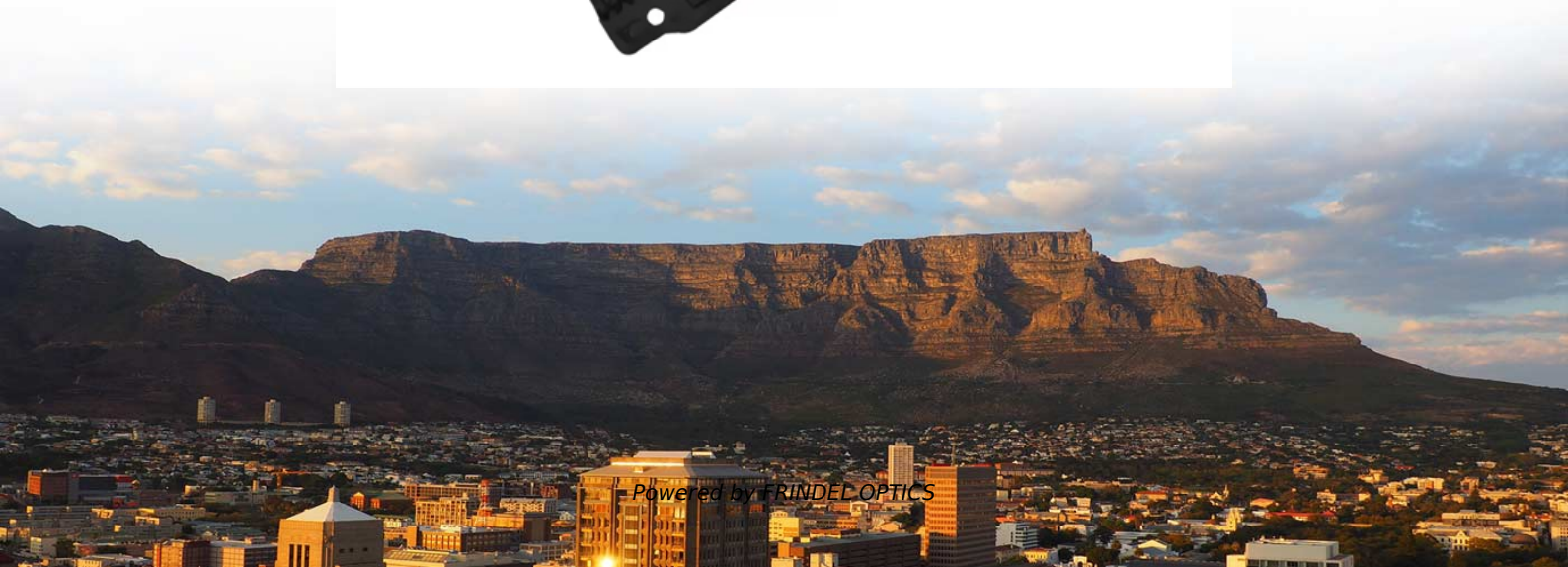




FRINDEL OPTICS

Specifications of Mobile Explosion-Proof Power Distribution Box





Specifications of Mobile Explosion-Proof Power Distribution Box



Ex Local Control Stations & Distribution Boxes

Atex control stations, explosion protected control units and distribution boxes made stainless steel maritime grade AISI 316L or AISI 304L. Atex Delvalle provides a

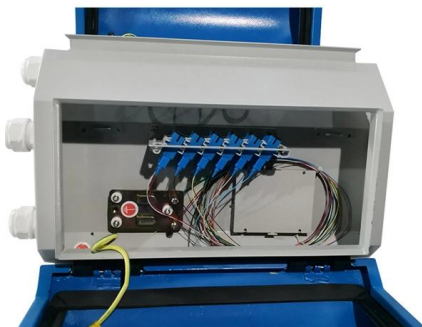
[Contact Us](#)

Explosion Proof Box & Cabinet

Product features: The explosion-proof control cabinet (box) can install various instruments inside. Low-voltage electrical appliances, frequency converters, PLCs, soft starters, and computer systems can



[Contact Us](#)



Distribution Boxes and Empty Enclosures

Boxes and Empty Enclosures Distribution Boxes BXM(D)S1 Series Explosion-proof Illumination (Power) Distribution Boxes (Ex de liB)

[Contact Us](#)

Explosion Proof Power Distribution Box

Product Overview Explosion Proof Power Distribution Box - 415V, 50Hz - 16 Amps - 304 Stainless Steel - ATEX/ IP66 Rated The Larson Electronics ATEX-EPJB

[Contact Us](#)



Custom CZ1290 Explosion-proof distribution boxes

CZ Electric Co., Ltd was established in 1990, is a CZ1290 Explosion-proof distribution boxes suppliers, and is headquartered in Jiaxing City, Zhejiang

[Contact Us](#)



Explosion-proof illumination (power) distribution box (power)

Mainly used for power distribution of temporary or mobile jobs. 1. The product structure mainly consists of cover, housing, explosion-proof latch, built-in circuit breaker or explosion-proof circuit breaker, and

[Contact Us](#)



Distribution Box Specifications And Models

The above are only some common distribution box specifications and features. When making actual selections, it is necessary to comprehensively

[Contact Us](#)





Flameproof Distribution Board , Explosion proof

The Flameproof Distribution Boards/panels are used for the distribution of the power supply in a company. To handle high-rated power, it is necessary to use heavy

[Contact Us](#)



Expert Guide: Select the Right Temporary Power Distribution Box

The right distribution box that matches your power requirements, durability needs, and weather resistance will give optimal performance for specific applications. Note that successful power

[Contact Us](#)

6WAY EXPLOSION PROOF DISTRIBUTION BOXES,

BESIDES THE PRESENT DESIGNATION FOR THE FULL PLASTIC EXPLOSION-PROOF MOBILE POWER BRANCH CONNECTION SOCKET BOX, IT ALSO

[Contact Us](#)



12WAY Portable industrial explosion-proof mobile socket

Tax excluded, add at checkout if applicable
12WAY Portable industrial explosion-proof mobile socket box
Construction site distribution box
Plastic power box

[Contact Us](#)



Custom CE90 Explosion-proof distribution panel

CE90 Explosion-proof distribution panel (Moveable) Prodcuts Features: The distribution box could be portable or movable, which is easy to use. Equipped

[Contact Us](#)



Explosion Proof Power Distribution Boxes CE92

Flameproof and explosion proof, these power overhaul distribution boxes are suitable for use in hazardous areas. Specs: Ex mark: Ex de IIC T4 Gb DIP A21 TA, T4

[Contact Us](#)

Control and Distribution Panels , Ex d , EJB Series

The enclosure series EJB forms the optimal basis for the application-specific configuration of terminal boxes, control stations as well as control and distribution

[Contact Us](#)



Product Specifications & Technical Drawings Portable Power Distribution

Product Specification Sheets for Portable Power Distribution Units (PDU) Our Stock and Custom-built Power Distribution Units (PDU) are connected to a main power source or portable generator. The

[Contact Us](#)





Merlin Gerin Explosion-Proof Distribution Box

Protect electrical systems in hazardous environments with the Merlin Gerin Explosion-Proof Distribution Box. Ideal for industries like petrochemical, mining, and chemical, it provides reliable safety and

[Contact Us](#)



HRMD92 Explosion proof Distribution Box (Ex d IIB+H2)

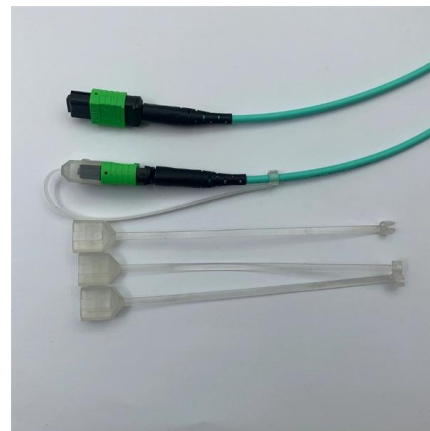
Available with a wide range of built in components. Enclosure: 316 stainless steel. Equipped with a specialised hinge structure which can prevent damage to the

[Contact Us](#)

Power Distribution Box Essentials: Functions, Types

Both ordinary distribution and ex-proof distribution power boxes serve the same purpose of safe power distribution, but each is suitable for different

[Contact Us](#)



Explosion Proof Power Distribution Boxes

Flameproof and explosion proof, these power overhaul distribution boxes are suitable for use in hazardous areas. Main switch: Maximum current is 180A. Branch

[Contact Us](#)



Explosion-Proof Distribution Box , Product Center

Explosion-proof distribution boxes are designed to safely control and distribute electrical power in hazardous environments, preventing ignition risks.

[Contact Us](#)



Explosion-Proof Distribution Boxes & Panels Manufacturer

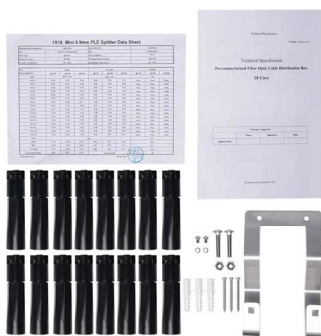
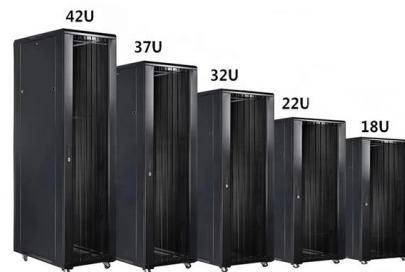
The explosion-proof distribution box safely delivers power in hazardous zones (oil, gas, chemical plants) with rugged, spark-resistant casing--ATEX/IECEX, IP66 certified for reliable operation in explosive

[Contact Us](#)

Explosion Proof Power Distribution Boxes

Flameproof and explosion proof, these power overhaul distribution boxes are suitable for use in hazardous areas. Specs: Ex mark: Ex de IIC T4 Gb DIP A21 TA,T4

[Contact Us](#)



Ex-Proof & Flameproof Enclosures & Junction Box , Supermec

All explosion-proof enclosures, lighting or power distribution boxes are manufactured using the latest technologies, both mechanical and electrical, using materials able to resist in most highly corrosive

[Contact Us](#)



Model and Specification of Explosion-Proof Distribution Box

Explosion-proof lighting distribution boxes and cabinets come in a variety of models. They vary in terms of materials, including metal and flame-retardant plastic; installation methods, such as

[Contact Us](#)



Explosion-proof illumination (power) distribution box (power)

3. Adopting the patented technology of the combined explosion-proof distribution box independently developed, the modular design and combination of the distribution box makes the whole distribution

[Contact Us](#)

Contact Us

For datasheets, pricing, or custom fiber access solutions, please visit:
<https://frindel.es>