

Specifications of Dutch Stainless Steel Cable Trays





Overview

The SILTEC stainless steel cable trays are made from high-quality stainless steel (AISI 304), ensuring excellent corrosion resistance and durability. With lengths of 3000 mm, widths ranging from 25 mm to 600 mm, and heights from 25 mm to 125 mm, we offer a wide range of sizes. Stago offers a complete range of cable tray systems for safe and efficient routing of power and data cables in commercial buildings, industrial facilities and data centres. Engineered and manufactured in the Netherlands, each range is developed to meet specific requirements for load capacity. De kabelkanalen, koppelplaten, hulpstukken, deksels alsmede de ophang-inrichtingen worden vervaardigd uit roestvaststaal in de kwaliteit AISI 304 of AISI 316 met een 2B finish. Whether specifying a major new project, refurbishing existing facilities or doing the engineering, procurement and construction (EPC) for your end user, with T&B Cabletray, ABB offers reliable solutions duly conforming to ASTM A123 & ISO 1461 : m.



Specifications of Dutch Stainless Steel Cable Trays



Cablofil CP150S6 316L Stainless Steel Wire Cable Tray Cover

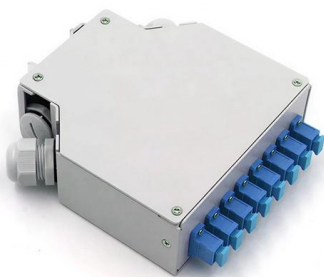
316L stainless steel wire cable tray cover for protecting cables in harsh environments. Provides excellent corrosion resistance with verified electrical continuity for demanding industrial and marine applications.

[Contact Us](#)

STAINLESS CABLE TRAY

CODE Tray can be found in a variety of industrial, institutional and commercial applications. We have supplied cable tray worldwide and continue to be innovative in our design features and custom

[Contact Us](#)



cable tray technical specifications

All light duty tray and accessories do not have a return edge. Also light duty tray of widths 150mm and un-der do not require the use of couplers as they have a swage joint. For sizes that do require a pair

[Contact Us](#)

Cablofil CF30/150S6 316L Stainless Steel Wire Cable Tray 3m

316L stainless steel wire cable tray for corrosive and hygienic environments. Open mesh design supports ventilation, inspection and long-term performance in demanding applications.



Product Catalogue Cable Management Solutions

fabricated from corrosion-resistant steel, stainless steel and aluminium alloys along with corrosion resistant finishes, including zinc, PVC, epoxy and special paints.

[Contact Us](#)



GUIDE CABLE TRAYS TECHNICAL

Specifies requirements for metal cable trays and associated fittings designed for use in accordance with the rules of Canadian Electrical Code, Part I and the National Electrical Code®

[Contact Us](#)



Cablofil CP400S6 316L Stainless Steel Wire Cable Tray Cover

Cablofil CP400S6 is a protective cover for wire mesh cable tray systems, used to retain and protect cables in harsh environments. It is compatible with wire mesh trays and secured using cover clamps.

[Contact Us](#)





Stago Cable Tray Ranges , High-Load Cable Management , Wibe Group

Engineered and manufactured in the Netherlands, each range is developed to meet specific requirements for load capacity, corrosion resistance, installation efficiency and finish. Explore the

[Contact Us](#)



Cable Trays , Cable Ladders

The SCHIPPER STEEL range of cable and reticulation management items includes Cable Trays (punched metal in straight lengths, horizontal bends, external bends, internal bends, 4-way joiners,

[Contact Us](#)

Cable Tray Technical Guide A practical guide to product selection and

Cable Tray Technical Guide A practical guide to product selection and installation This guide for engineers and installers has been developed by ABB as a practical reference regarding cable tray

[Contact Us](#)



Eurostrut Cable Trays , cable tray, cable route and

Cable Trays Clear cable routing - Organized and safe cable management, easy maintenance, helps prevent failures. Strong and durable - Made of hot-dip

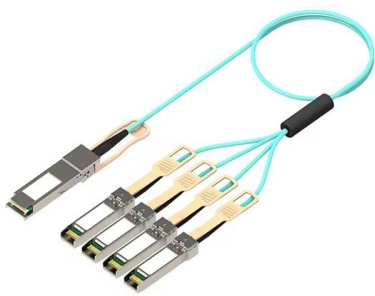
[Contact Us](#)



Stainless Steel Cable Tray

Stainless steel cable trays are made of 304, 316 grade stainless steel, which are designed into channel style, ladder style, perforated style. Stainless steel cable

[Contact Us](#)



Eurostrut Cable Trays , cable tray, cable route and

Strong and durable - Made of hot-dip galvanized steel or stainless steel, suitable for indoor and outdoor applications. Fast installation - Reduce installation costs with

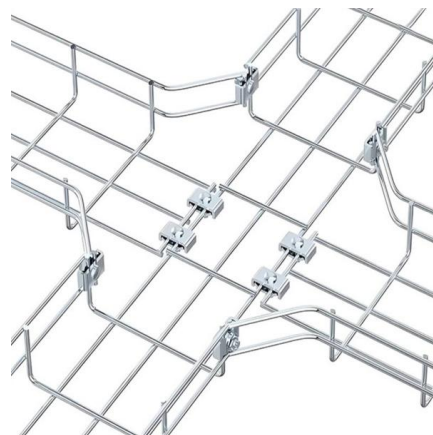
[Contact Us](#)



Stainless Steel Cable Trays (SS) Manufacturer & Exporter

Stainless steel cable trays, SS Cable Tray can withstand high temperatures, making them suitable for environments that require thermal stability, such as

[Contact Us](#)



Stainless Steel Cable Tray Straight Sections -- KABLE

Durable Stainless Steel Construction - Made from high-quality 304 stainless steel with a chrome finish, ensuring long-lasting durability and corrosion resistance.

[Contact Us](#)



CABLE TRAY

SFSP produces a variety of products ranging from cable management systems; cable trays, cable ladders, basket trays, trunkings and support systems, to mechanical cladding fixations, steel lintels

[Contact Us](#)



Metal Cable Ladders and Trays Supplier , Advanced Strut

We have a variety of cable trays available for purchase, these include perforated cable and wire mesh trays and cable ladders. Available in stainless steel.

[Contact Us](#)



Stainless steel cable trays

Stainless steel cable trays The SILTEC stainless steel cable trays are made from high-quality stainless steel (AISI 304), ensuring excellent corrosion resistance

[Contact Us](#)



Series 3 & 4 Stainless Steel Specification Document

Construct units with rounded edges and smooth surfaces; in compliance with applicable standards; and with the following additional construction features. Cable tray shall be installed according to the latest

[Contact Us](#)





Cable Trays, Cable Management Trays , RS

Browse our range of Cable Trays. Buy Cable Management Cable Tray, Wire Tray & Cable Baskets. The perfect cable management solution. Shop Today!

[Contact Us](#)



Stainless Steel Cable Tray In Netherlands

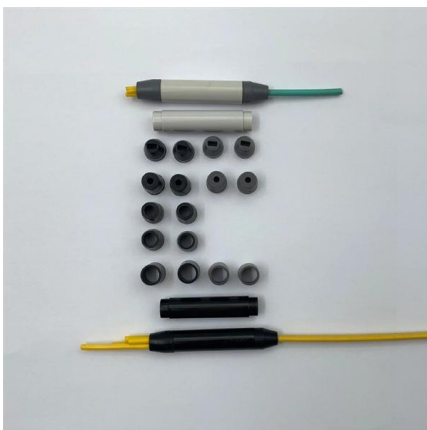
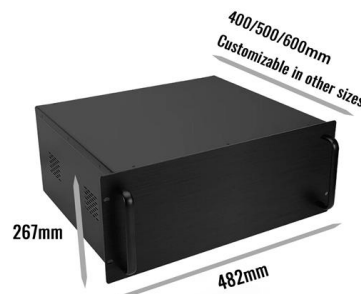
Whether you require cable management solutions for industrial facilities, commercial buildings, or outdoor applications, our stainless steel cable trays are versatile enough to meet your diverse needs.

[Contact Us](#)

cable tray technical specifications

stainless steel 304 & 316 tray Stainless steel manufactured to ASTM 9108-94 (2015) or BS EN 10088-1: 2014 without a post treatment. The European standard that lists the chemical composition of

[Contact Us](#)



B1 Tray H28-H53-H78-H103

The cable ducts, splice plates, fittings, covers and suspension constructions are fabricated in stainless steel, quality AISI 304 or AISI 316 with a 2B finish. The attachment materials are made of A4 quality.

[Contact Us](#)



Stainless steel cable trays

Our cable management systems are easy to install and flexible to expand, making them ideal for various applications. Below is an overview of the different versions.

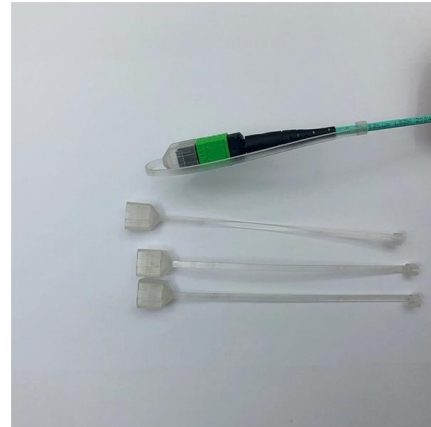
[Contact Us](#)



GUIDE CABLE TRAYS TECHNICAL

In accordance with its continuous improvement policy, Legrand reserves the right to change the specifications and illustrations without notice. All illustrations, descriptions and technical information

[Contact Us](#)



Series 3 & 4 Stainless Steel Specification Document

Cable tray shall be installed according to the latest revision of NEMA VE 2. Stainless Steel: Straight section and fitting side rails and rungs shall be made of AISI Type stainless steel.

[Contact Us](#)



Contact Us

For datasheets, pricing, or custom fiber access solutions, please visit:
<https://frindel.es>