

Specifications for outdoor cable trays for base stations

50KW modular power converter



Flexible Configuration

- Modular Design, Expanding as Required
- Small&Light, Wall Mounted
- Installed in Parallel for Expansion



Powerful Function

- Support PV+ESS
- Grid Support, Equipped with SVG Technology
- On-Grid and Off-Grid Operation



Reliable Protection

- Outdoor IP65 Design
- Sufficient Protection Functions Equipped



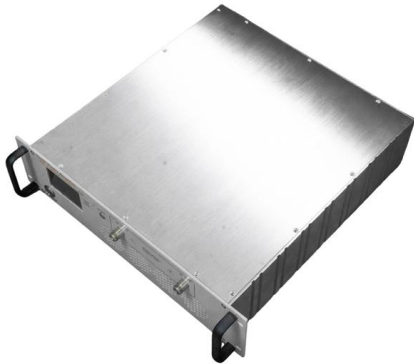
Overview

Our engineer's guide helps you choose the right outdoor cable tray based on environment, load, and corrosion resistance. The mechanical and electrical characteristics, tests, certifications, overall quality management, recommendations mentioned. When developing our cable support OBO can offer reliable solutions for systems, three attributes are at the routing and fastening cables securely core of what we do: efficiency, resilience for each of these installation challenges and safety. Is your cable tray system optimized for safety, dependability, space and cost savings?

Cable tray (or cable ladder) systems are a popular alternative to electrical conduit systems, as they have an outstanding record for dependable service, design flexibility and cost savings in commercial and industrial applications. Maintain spacing or to keep cables in place when the tray is bent the minimum bend radius for cables as they exit the bottom of the cable tray. Non-Conductivity: Required in areas with sensitive electronic equipment or where fault current is a concern.



Specifications for outdoor cable trays for base stations



B-Line series Cable Tray Design Considerations

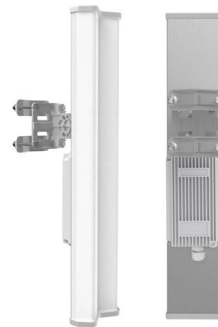
Our wind certification report provides you with list of acceptable B-Line series cable tray supports, fittings and covers based off of the environmental conditions, cable loading, and type of cable tray in your

[Contact Us](#)

Cable Tray Technical Guide A practical guide to product selection and

In designing supports for a cable tray system, consideration should be given to the loads associated with future cable additions and any additional loading that may be applied to the cable tray system (e.g.,

[Contact Us](#)



cable tray technical specifications

Armorduct cable tray systems are usually assembled using M6 roofing bolts particularly for couplers, fishplates and connection to supporting framework. It should be noted that independent testing has

[Contact Us](#)

Cable Trays Selection Guide: Types, Features,

Cable trays are components of support systems for power and communications cables and wires. A cable tray system supports and protects both power and



26 05 36 Cable Trays for Electrical Systems

Description: This product category covers metal cable trays and metal cable tray systems intended for field assembly and for use in accordance with Article 392 of NFPA 70.

[Contact Us](#)



Cable Tray Institute

The Cable Tray Institute (CTI) was founded in 1991 to support the cable tray industry by engaging in research, development, education, and the dissemination of

[Contact Us](#)



4G & 5G LTE Base Station

Small Cell Base Stations for 4G & 5G-NR LTE
Outdoor CPEs LTE Indoor CPEs Mobile WiFi
Hotspots with LTE-Backhaul Microwave and MMW
Backhaul links for

[Contact Us](#)

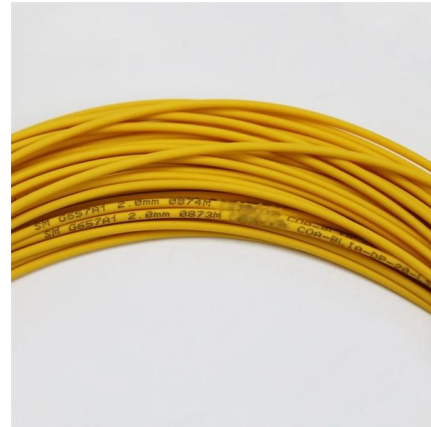




Outdoor Cable Tray, Industrial Outdoor Cable Tray

Outdoor Cable Tray NewReach's outdoor cable trays are designed to support and protect electrical cables in outdoor environments. They can endure harsh weather

[Contact Us](#)



Selecting Outdoor Cable Tray: A Project Engineer's Guide

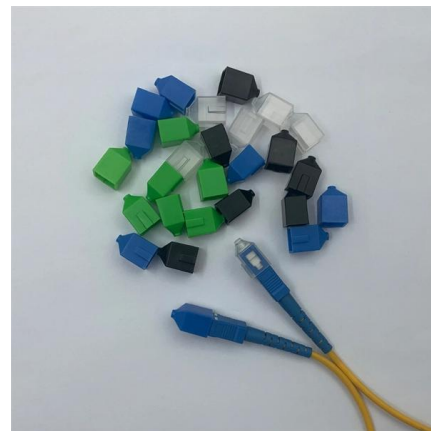
Our engineer's guide helps you choose the right outdoor cable tray based on environment, load, and corrosion resistance. Select HDG, Aluminum, or

[Contact Us](#)

Compact Outdoor Cabinet for 5G & 4G Base Stations

Space-saving outdoor cabinet designed for 5G and 4G base station equipment. Provides reliable protection and easy deployment in telecom networks.

[Contact Us](#)



Codes and Standards , Cable Tray Institute

The Cable Tray Institute is making available the current edition of this practical guide for the proper installation of aluminum or steel cable tray systems. These guidelines will be useful to engineers,

[Contact Us](#)



Cable Tray Technical Guide A practical guide to product selection and

A practical guide to product selection and installation This guide for engineers and installers has been developed by ABB as a practical reference regarding cable tray characteristics, installation, and

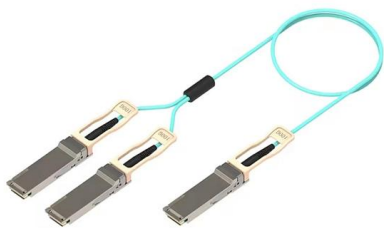
[Contact Us](#)



Cable tray manual

Nearly every aspect of cable tray design and installation has been explored for the use of the reader. If a topic has not been covered sufficiently to answer a specific question or if additional information is

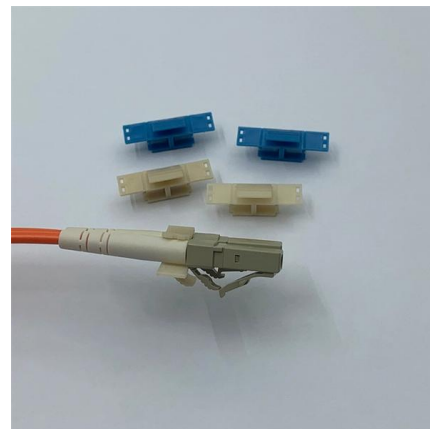
[Contact Us](#)



RECOMMENDED SPECIFICATIONS OF JUNCTION BOX AND CABLE TRAY

Based on current industry practice, the straight type cable trays are more commonly used in offshore structures and units, so this section addresses the standard specifications of straight type cable trays.

[Contact Us](#)



Product Specifications: CABLE TRAY

FDG CABLE TRAY ng; Power, Data, and Audio Visual. A quick and easy system to install without the need for specialised tools or equipment, makes it a first choice for Comm solution that works for your

[Contact Us](#)

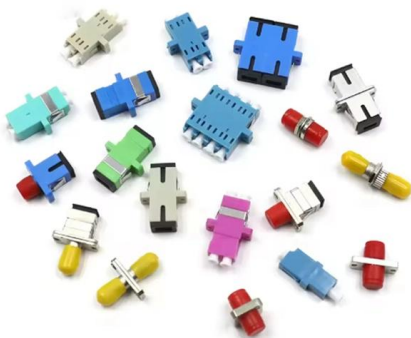
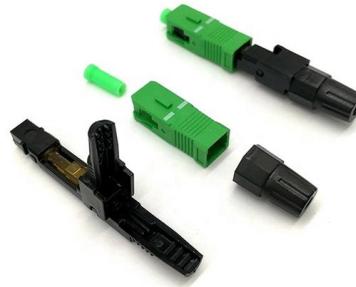




Product Catalogue Cable Management Solutions

Cable ladder is a more reliable, less expensive solution for supporting cable, which is easier to maintain, proves more adaptable to changing needs, and is more suitable for harsh and corrosive environments.

[Contact Us](#)



DIVISION 26 - ELECTRICAL 26 05 36 CABLE TRAYS FOR

DIVISION 26 - ELECTRICAL 26 05 36 CABLE TRAYS FOR ELECTRICAL SYSTEMS 2.02 GROUND/BOND A. Provide a continuous #6 bare copper grounding cable through all lengths of

[Contact Us](#)

26 05 36 Cable Trays for Electrical Systems

EATON B-LINE SERIES GUIDE SPECIFICATION
Section 26 05 36 - CABLE TRAYS FOR
ELECTRICAL SYSTEMS 26 05 364/2025 Specifier
Notes: This product guide specification is written

[Contact Us](#)



Guide to cable support systems

The load capacity of the cable trays according to the support width can be read off in the diagram using load curves - here, shown as an example for a cable tray with the tray widths 100 to 600 mm.

[Contact Us](#)



Durable Outdoor Cable Trays

Discover high-quality outdoor cable trays designed for efficient cable management, offering durability and easy installation. Ideal for enhancing organizational systems in commercial settings.

[Contact Us](#)



12-SDMS-06

Scope This SEC Distribution Material Specification requirements for design, materials, manufacturing, indoor/outdoor Metallic Cable Tray System, intended to be used in the distribution network of the

[Contact Us](#)

Safety Cans

Justrite® is the leading source of safety cabinets and equipment for hazardous materials, environmental protection spill containment devices, and specialized

[Contact Us](#)



GUIDE CABLE TRAYS TECHNICAL

NEMA VE 1-2017 Specifies requirements for metal cable trays and associated fittings designed for use in accordance with the rules of Canadian Electrical Code, Part I and the National Electrical Code®

[Contact Us](#)



Base Stations for Outdoor Radio , Intelbras

Browse the Outdoor Radio Base Stations line and find quality equipment for professional wireless connections. Know more!

[Contact Us](#)



Cable Tray Specifications and Sizes , PDF

The document describes specifications for different types of cable trays, including outside returned flanged cable trays in various standard sizes, light duty and

[Contact Us](#)

Types of Cable Trays - Advantages, Applications and Sizes

Explore the types of cable trays, their advantages, applications, and standard sizes. Learn how they improve cable management and support various industries.

[Contact Us](#)



Contact Us

For datasheets, pricing, or custom fiber access solutions, please visit:
<https://frindel.es>