

Specifications for Cable Tray Hanger Frames





Specifications for Cable Tray Hanger Frames



cable tray technical specifications

It should be noted that independent testing has been carried out to verify the structural performance of cable tray at the minimum and maximum temperature classifications for test conditions. They should

[Contact Us](#)

CABLE TRAY

Prior to installing cable in the cable tray, examine cable paths to ensure all areas are free of debris that may interfere with the cable's installation. The cable tray should never be used as a walkway.

[Contact Us](#)



SECTION 26 0529 HANGERS AND SUPPORTS FOR ELECTRICAL

Section 26 0536 - Cable Trays for Electrical Systems: Additional support and attachment requirements for cable tray. Section 26 0537 - Boxes: Additional support and attachment requirements for boxes.

[Contact Us](#)



Best Practice Guide to Cable Ladder and Cable Tray

Cable ladder and cable tray systems The following recommendations are intended to be a practical guide to ensure the safe and proper installation of



Section 27 05 36 Cable Tray for Communications Systems

The cable tray system shall accommodate the weight of the horizontal and/or backbone cabling. The rung spacing shall be between 6" (in) 152 mm to 8" (in) 203 mm.

[Contact Us](#)



Technical Specification for Cable tray installation and cable laying work

Approval of IPR shall be obtained for site preparation and marking the cable tray routes and locations of cable tray support before proceeding with the erection and installation work.

[Contact Us](#)



Cable Tray Technical Guide A practical guide to product selection and

In designing supports for a cable tray system, consideration should be given to the loads associated with future cable additions and any additional loading that may be applied to the cable tray system (e.g.,

[Contact Us](#)



Document DICOS



A channel cable tray can be added to an existing cable tray system using the method illustrated in Figure 3-89 to add approved cabling systems. Refer to the loading information of the existing cable

[Contact Us](#)



26 05 29 Hangers and Supports for Electrical Systems

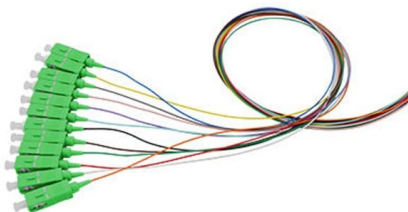
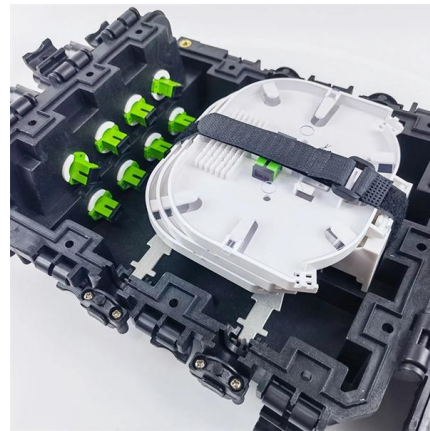
Items to be supported include raceways, cables, wireways, cable trays, busways, boxes, cabinets, equipment, and other electrical products. Where support materials or workmanship is unique to a

[Contact Us](#)

US Tray

US Tray Channel meets NEMA VE-1 standards for cable tray. Talon Products: Our cable cleats are high-strength cable restraints that limit cable movement. They

[Contact Us](#)



A Guide to Cable Tray Accessories and Their Functions

Explore a detailed guide to cable tray accessories and understand their uses in ensuring safety, stability, and efficiency in electrical system

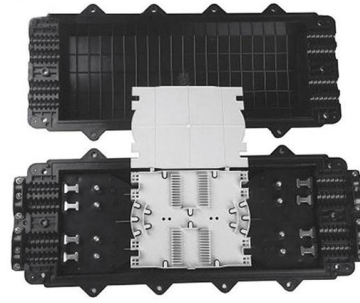
[Contact Us](#)



Best Practice Guide to Cable Ladder and Cable Tray Systems

These guidelines will be particularly useful for the design, specification, procurement, installation and maintenance of these systems. Cable ladder systems and cable tray systems are designed for use

[Contact Us](#)



Installation of Cable Tray, Trunking And Accessories

2. Purpose This method statement for the Installation of Cable Tray, Trunking, and Accessories shows and explains the procedure must be followed to install the cable tray and

[Contact Us](#)



What are the standard requirements of the cable tray bracket, and the

Cable tray hanger should fill in: name + height H + cross pole length L, for example: suspension frame, DK-101-50mm 25 represents the suspension frame suitable for 50x 25 bridge (excluding through wire).

[Contact Us](#)



Guide to cable support systems

Four different mesh cable tray types are available, depending on the requirements, area of application and cable quantity. The innovative Magic connection system of the GRM and G-GRM mesh cable

[Contact Us](#)



Swifts cable tray technical guide

Overhead hangers Supplied singly without fasteners Support horizontal runs of lightly loaded tray up to 1 mm wide from overhead structures se 1 threaded rod For technical information, p. 96

[Contact Us](#)



HANGERS & BRACKETS Lengths Cable Ladder

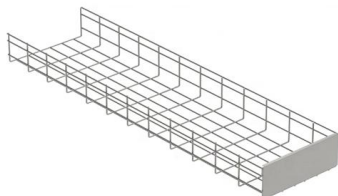
The loading table below gives the recommended maximum load for each size of tray overhead hanger when used with Vantrunk cable tray and with a uniformly distributed load (UDL) onto the tray

[Contact Us](#)

Cable Tray Technical Guide A practical guide to product selection and

A practical guide to product selection and installation This guide for engineers and installers has been developed by ABB as a practical reference regarding cable tray characteristics, installation, and

[Contact Us](#)



Full cable tray systems specification document

The drawings which constitute a part of these specifications indicate the general route of the cable tray systems. Data presented on these drawings is as accurate as preliminary surveys and planning can

[Contact Us](#)



TECHNICAL GUIDE

This standard defines configurations for the mechanical tests to be performed on cable trays, brackets, hangers and other accessories. It also specifies the requirements and methods for the electrical

[Contact Us](#)



50mm Suspension Rod Hanger for Cable Trunking - PG

Support 50mm cable trunking with this PG threaded rod hanger - fits M8/M10 rods and offers secure, adjustable suspension for neat cable installs.

[Contact Us](#)



SECTION 26 05 36 CABLE TRAYS FOR ELECTRICAL SYSTEMS

1.02 RELATED REQUIREMENTS Section 07 84 00 - Firestopping: Firestopping around cable trays. Section 26 05 26 - Grounding and Bonding for Electrical Systems. Section 26 05 29 -

[Contact Us](#)



Decoding Cable Tray Support Structures: Tips and Insights

Discover efficient cable tray support structures for optimal cable management. Learn about hanger, wall-mounted, and Unistrut systems for safer

[Contact Us](#)





Best Practice Guide to Cable Ladder and Cable Tray Systems

This guide covers cable ladder systems, cable tray systems, channel support systems and associated supports intended for the support and accommodation of cables and possibly other electrical

[Contact Us](#)



Server Rack Accessories

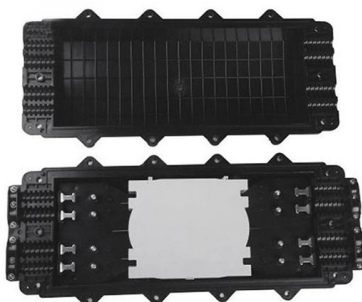
The Chatsworth Top-Mount Cable Waterfall Tray guides patch cords and jumper cables side to side or rack to rack. Features: Attaches to the top of the Seismic

[Contact Us](#)

CABLE TRAY SYSTEMS GUIDE

Some applications may require the cable tray to support the weight of a single, dead object in addition to the cable loads. Specifications typically require this to be applied at the midpoint of the span between

[Contact Us](#)



Cope Wire Basket Master Spec

Wire basket cable tray supports shall be center support hangers, trapeze hangers or wall brackets as manufactured by the Cope Cable Tray Division of Allied Tube & Conduit Corporation, [or engineer

[Contact Us](#)



Contact Us

For datasheets, pricing, or custom fiber access solutions, please visit:
<https://frindel.es>