

Specifications and Models of Dedicated High and Low Voltage Complete Sets of Equipment





Specifications and Models of Dedicated High and Low Voltage Comp



The complete portfolio for low-voltage power distribution

The consistent concept behind the communication-capable components of our low-voltage power distribution range forms a sound basis for the measurement, indication, evaluation and optimization

[Contact Us](#)

HV/LV Complete Electrical Equipment

This solution covers a complete set of power equipment from low-voltage distribution cabinets, high-voltage switchgear to transformers, automation control systems, etc., aiming to provide

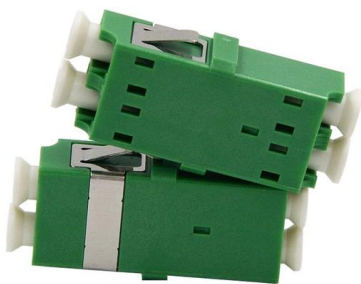
[Contact Us](#)



High and low voltage complete sets of equipment

High and low voltage complete sets of equipment You are here: Home> Products> List

[Contact Us](#)



GGD Low Voltage Fixed Complete-set Switchgear

The GGD Low Voltage Fixed Complete-set Switchgear Equipment(Abbreviation as Switchgear)is for the purpose of power distribution



- ✓ Slow Axis Aligned (0°) - for standard sensing applications
- ✓ Fast Axis Aligned (90°) - for special modulation applications
- ✓ 45° Axis Aligned - for depolarizer applications



UNDP , Procurement Notices

Hier sollte eine Beschreibung angezeigt werden, diese Seite lässt dies jedoch nicht zu.

[Contact Us](#)

Technical Management and Risk Prevention and Control of High and

This paper comprehensively explores the technical management and risk prevention of high and low voltage complete sets of equipment in power engineering.

[Contact Us](#)



Xi'an Zhongji High and Low Voltage Electric Equipment Co., Ltd.

Xi'an Zhongji Hi-Low Voltage Electric Equipment Co., Ltd is a private company which is majoring in designing, manufacturing and selling of 0.4-35KV high-low voltage full set electric equipments and

[Contact Us](#)



AC Dielectric Test Sets

AC Dielectric Test Sets Withstand Testing for Electrical Apparatus HVI produces several lines of power frequency output AC high voltage test sets. These testers

[Contact Us](#)



IEEE_CED SubDesign

Substation - A set of equipment reducing the high voltage of electrical power transmission to that suitable for supply to consumers.

[Contact Us](#)

High

This equipment is suitable for AC systems with a frequency of 50 (60) Hz, a rated operating voltage of 690V or less, and a rated current of 4000A or lower. It is used as distribution equipment for power

[Contact Us](#)



Power transformer_ High and low voltage complete

The company specializes in the production of transformer, box transformer, wind power substation, solar photovoltaic substation, high and low voltage complete

[Contact Us](#)



United Nations Development Programme

Hier sollte eine Beschreibung angezeigt werden, diese Seite lässt dies jedoch nicht zu.

[Contact Us](#)



High and Low Voltage Complete Sets: Reliable Solutions for Power

Explore Chennuo Electric's range of high and low voltage complete sets, designed to ensure the reliable operation of power systems. Our solutions cater to a wide range of applications, offering stability and

[Contact Us](#)

Low-voltage switchgear fundamentals

Low-voltage switchgear fundamentals What is switchgear? Electrical switchgear refers to a centralized collection of circuit breakers, fuses and switches (circuit

[Contact Us](#)



Basics in low voltage distribution equipment

Low voltage distribution equipment typically operates at less than 600 volts; in contrast, medium voltage equipment affords a wider range of 600 to 38,000 volts. This paper provides a basic overview of the

[Contact Us](#)



Complete sets of equipment Archives

GGD is a Fixed Complete-set Switchgear Equipment with simply and flexibly. GCK is a Withdrawable Low Voltage Complete-set Switchgear Equipment with high-reliability, cheaply. GHS168 is our

[Contact Us](#)



High Voltage Test Sets , Resin Cast Transformers , Oil Cooled

Mehru manufactures high voltage Test sets from 2.5kV to 600kV (2.5kV/5kV Dual range HV sets are in portable model). Standard rating of HV sets manufactured are 100 mA for 30 minutes.

[Contact Us](#)

High Voltage Power Supply: Principles and Applications

Input Voltage - High voltage power supplies accommodate different input voltages, spanning single-phase AC, three-phase AC, or DC input.

[Contact Us](#)



03
Easy installation
 Meticulous workmanship
 Reasonable structure
 Stable performance

Complete Set of High/ Medium/ Low Voltage Switchgear

Low voltage switchgear is a device used for power transmission, distribution, and energy conversion, suitable for industries such as power plants,

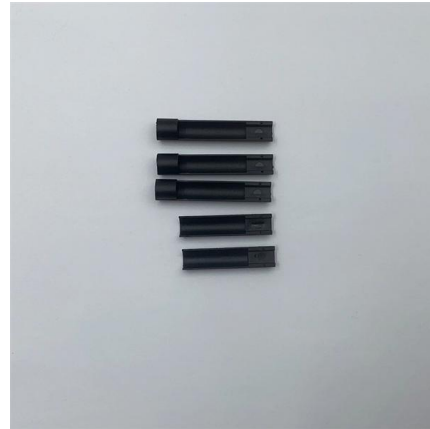
[Contact Us](#)



Power transformer_ High and low voltage complete

Beier Transformer Group Co., Ltd. focuses on the production of power transformers, wind power substations, solar photovoltaic substations, high and low voltage

[Contact Us](#)



High Voltage Complete Set of Low Resistance

High Voltage Complete Set of Low Resistance Grounding Device with Oil Type or Dry Type Grounding Transformer, Find Details and Price about Grounding

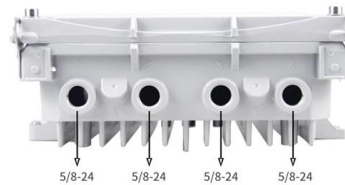
[Contact Us](#)



Electrical Transmission Equipment , Electrical Control

Beijing HCRT Electrical Equipment Co. is a trusted manufacturer of electrical equipment sets. We specialize in the production of switching stations, main ring

[Contact Us](#)



The development trend of high and low voltage complete sets of

High and low voltage complete sets of electrical equipment refers to the combination of electrical equipment components including circuit breakers, isolating switches, load switches, fuses, voltage

[Contact Us](#)





High and low voltage complete set for Smart Power Distribution

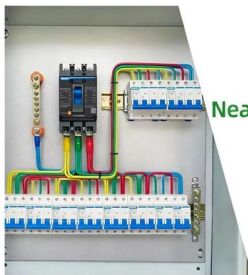
Zhengrui Electric Power Group provides advanced high and low voltage complete sets of equipment to ensure safe, efficient and intelligent power control in different application fields.

[Contact Us](#)



DETAILS DISPLAY

Focus On Every Detail



01
Neat & Clean Layout
Cleaner arrangement of components, Easy to operate

Analysis of complete sets of high and low voltage electrical equipment

As an important type of electrical device, complete sets of electrical equipment belong to the category of electrical equipment, similar to switches, contactors, circuit breakers, and

[Contact Us](#)

Contact Us

For datasheets, pricing, or custom fiber access solutions, please visit:
<https://frindel.es>