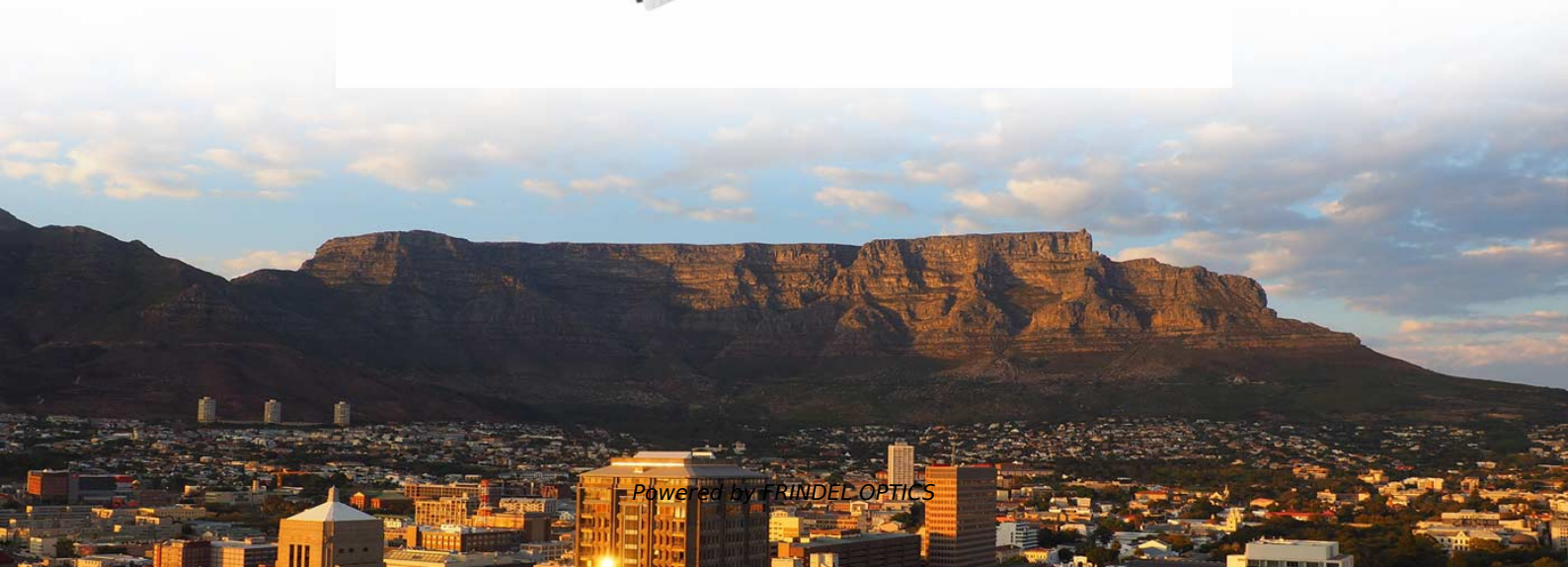


Spacing requirements for electrical appliances in distribution boxes





Overview

Rule 2-310 requires the minimum working space around electrical equipment to be based on the Equipment Nameplate Rating rather than the overcurrent setting. The requirements of Rules 2-308 and 2-310 are particular to certain types of equipment (i. Safety of equipment shall be determined using the following considerations: Suitability for installation and use in conformity with the provisions of this subpart; Note to paragraph (b) (1) (i) of this section: Suitability of equipment for an identified purpose may be evidenced by listing or. However, the section that could be interpreted to require an electrical room is 110.



Spacing requirements for electrical appliances in distribution boxes

Electrical Equipment Working Space Requirements



A minimum working space 30 inches wide must be provided in front of electrical equipment rated at 600 V or less and is likely to require servicing while energized.

[Contact Us](#)

Electrical equipment floor space

This paper will review some of the NEC requirements regarding required electrical space and discuss new product concepts serving to reduce equipment size, resulting in reduced space requirements,



[Contact Us](#)



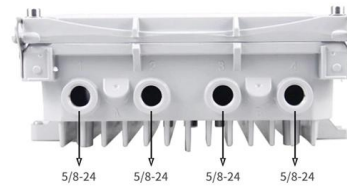
Electrical Panel Location and Installation: Clearance,

According to the code: " the working space around the breaker panel must be at least 30 inches wide and 3 feet of front clearance." A door doesn't

[Contact Us](#)

Understanding Distribution Boxes: A Comprehensive Guide

A distribution box, also known as a power distribution box or electrical distribution box, is used to distribute electrical power safely to multiple



Electrical Room Basics Part 1

The sections within 110.26 are specific to working spaces about electrical equipment that may or may not be within a room. Working space may

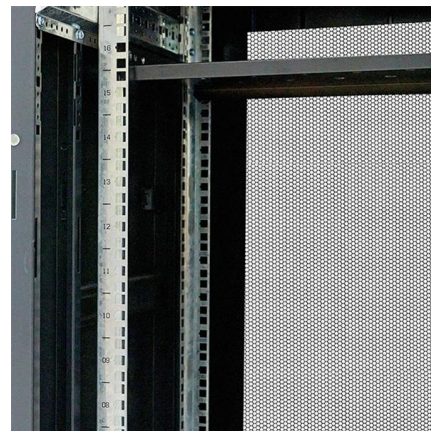
[Contact Us](#)



Working Clearances, based on the 2020 NEC

For large equipment containing overcurrent, switching, or control devices, an entrance to (and egress from) the required working space at least 24 in. wide and

[Contact Us](#)



Key Points Of Installation And Collocation Of Distribution Box In

Distribution box and switch box shall be made of iron plate or high-quality insulating material, and the thickness of iron plate shall be greater than 1.5mm The electrical equipment in the distribution box

[Contact Us](#)

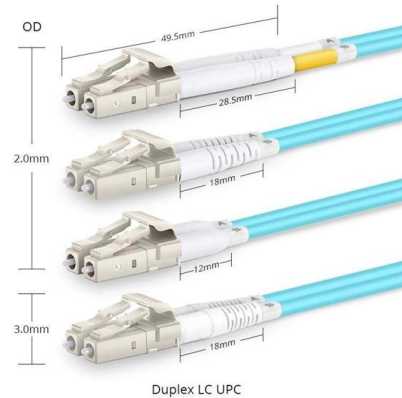




How to confirm whether the installation location of the

The electrical distribution box plays a vital role in the power system. It is responsible for distributing electricity to various circuits and equipment.

[Contact Us](#)



How to Install a Cable Distribution Box Safely and

In modern electrical systems, cable distribution boxes (also known as electrical distribution boxes or distribution boxes) play a crucial role as the key

[Contact Us](#)

Key Points Of Distribution Box Installation

3. Distribution box and switch box shall be installed in ventilated, dry and normal temperature places. It is strictly prohibited to install it in the gas, flue gas, steam, liquid and other harmful media with severe

[Contact Us](#)



Learn More About NFPA 70, National Electrical Code

The requirements in Chapters 1 through 4 delve into the key base requirements for items such as safe working space, overcurrent protection, grounding and

[Contact Us](#)



How to Choose a House Distribution Box , CHINT global

A well-chosen distribution box ensures the safety and efficiency of your household electrical system. This article guides you through selecting a

[Contact Us](#)



- IP65/IP55 OUTDOOR CABINET
- IP54/55
- OUTDOOR ENERGY STORAGE CABINET
- OUTDOOR BATTERY CABINET

2-9-* Working space around electrical equipment

Rule 2-310 requires the minimum working space around electrical equipment to be based on the Equipment Nameplate Rating rather than the overcurrent setting. The requirements of Rules 2-308

[Contact Us](#)

1910.303

Space about electric equipment. Sufficient access and working space shall be provided and maintained about all electric equipment to permit ready and safe operation and maintenance of such equipment.

[Contact Us](#)



110.26 (C) (2) Large Equipment.

For large equipment that contains overcurrent devices, switching devices, or control devices, there shall be one entrance to and egress from the required working

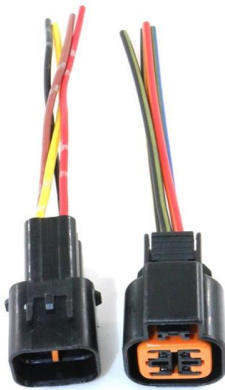
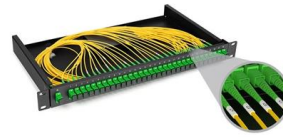
[Contact Us](#)



Safety requirements of distribution box

The distribution box has the characteristics of small size, simple installation, special technical performance, fixed location, unique configuration function, not limited by

[Contact Us](#)



Spacing Requirements for Power Distribution and Terminal Blocks

selection and application of Power Distribution Blocks (PDBs) and Terminal Blocks. It is fairly well understood that if an assembly short-circuit current rating above 10,000 amperes is desired, a Power

[Contact Us](#)

Cautions and Requirements for Installation of

Distribution box is a low-voltage distribution device which assembles switchgear, measuring instruments, protective appliances and auxiliary equipment in a closed

[Contact Us](#)



Essential Guide: Electrical Panel Access Clearance

Access clearance requirements refer to the space that must be maintained around electrical panels to ensure safe Operation and Maintenance. This clearance is

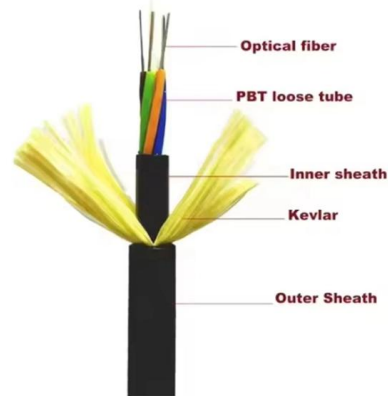
[Contact Us](#)



CHAPTER 39 POWER AND LIGHTING DISTRIBUTION

ICC Digital Codes is the largest provider of model codes, custom codes and standards used worldwide to construct safe, sustainable, affordable and resilient

[Contact Us](#)



Electrical

Electrical is addressed in specific standards for general industry and maritime. This section highlights various OSHA standards and documents related to electrical hazards. OSHA Standards Visit the

[Contact Us](#)

Spacing Requirements for Power Distribution and Terminal Blocks

UL508A contains two important requirements to consider when applying power distribution blocks. Spacing of 1 through air, 2 over surface (at 600V) is required when used in a feeder circuit (that's

[Contact Us](#)



The purpose, working principle, and usage instructions

The distribution box is an electrical equipment with the characteristics of small size, easy installation, special technical performance, fixed position,

[Contact Us](#)





Contact Us

For datasheets, pricing, or custom fiber access solutions, please visit:
<https://frindel.es>