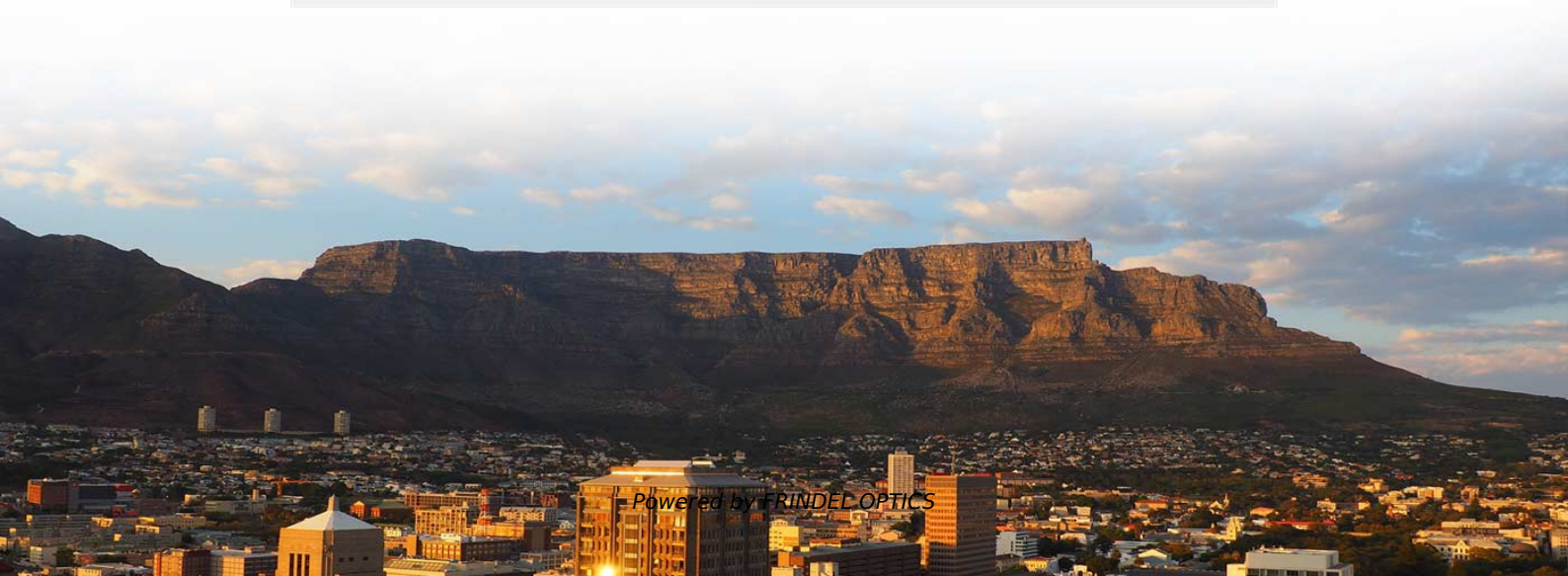


Spacing between wiring conduits in distribution boxes



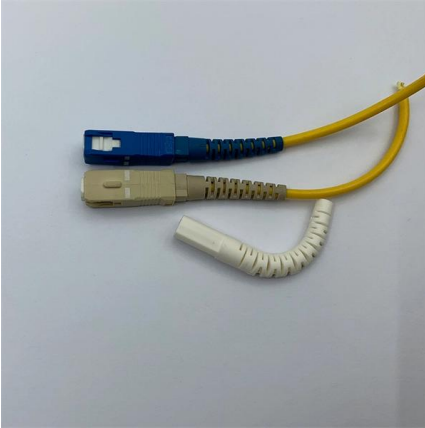


Overview

This guide gives you clear spacing rules, how to measure them in the field, and quick reference tables for each common conduit type—EMT, RMC, IMC, FMC, LFMC, LFNC, ENT, and PVC—based on the 2023 National Electrical Code® (NEC). Getting raceway support right keeps your installation safe, code-compliant, and inspector-friendly. Overfilling conduits causes excessive heat buildup, difficult wire pulling, and potential insulation damage, while oversizing wastes money and installation space. A conduit body is a removable-cover section of a conduit system that provides access at junctions or termination points. When installing insulated conductors of 4 AWG or larger, the minimum dimensions of pull or junction boxes installed in a raceway or cable run must comply with 314.



Spacing between wiring conduits in distribution boxes



A Complete Guide to NEC Article 314 on Electrical Boxes and Conduit

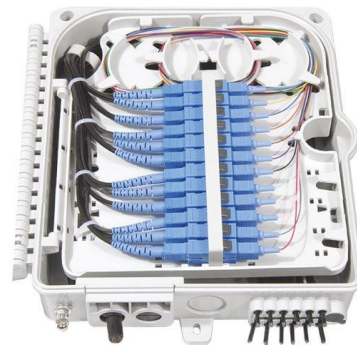
Regardless of the wiring method, box fill calculations apply equally to all cables. Use our conduit fill calculator to determine the calculation in your specific case.

[Contact Us](#)

NEC PVC Conduit Rules: Article 352 Support & Burial

Master NEC Article 352 with our PVC conduit quick reference charts. Learn burial depths, support spacing, Sch 40 vs 80, and expansion fitting rules.

[Contact Us](#)



Communications Distribution System Requirements

Conduit Conduit or Electrical Metallic Tubing (EMT) shall contain no more than two (2) 90-degree bends and have an aggregate bend of no more than one-hundred and eighty (180) degrees without a pull

[Contact Us](#)

Spacing Requirements for Power Distribution and Terminal Blocks

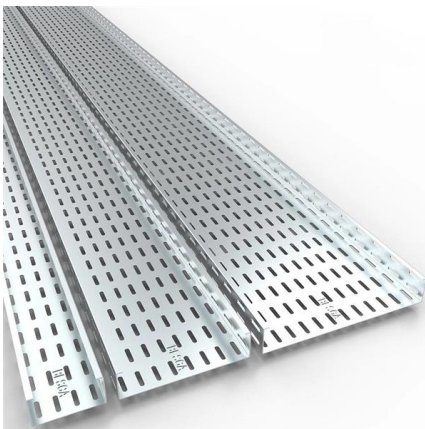
Power Distribution blocks are evaluated to UL1953, the Power Distribution Block standard and are listed for general installation, meaning they have adequate spacing for most OEM and field applications.



Method Statement for Installation of Electrical Conduit

On receipt of the conduit, boxes and fittings materials at site necessary precautions shall be taken for unloading, shifting & storage as follows: Material

[Contact Us](#)



Conduit Fill Chart & NEC Calculator , Wire Capacity Tables

Master conduit fill calculations with our complete NEC guide including fill charts, wire capacity tables, and step-by-step examples. Learn proper conduit

[Contact Us](#)



High Voltage Conduit: Types, Standards, and

The conduit and its fittings must maintain adequate insulation distance between high-voltage conductors and grounded structures. Even the conduit's

[Contact Us](#)



Specifications for Electrical Underground Residential Distribution

Consult company representative for conduit size. Reference sheets 8 and 9 for notes and instructions. Separation dimensions apply to company conduits or cables only. Maintain 12" separation between

[Contact Us](#)



314.28 Pull and Junction Boxes and Conduit Bodies.

For angle pulls, U pulls or splices, the distance between each raceway entry inside the box or conduit body and the opposite wall of the box or conduit body shall not

[Contact Us](#)



Electrical conduit installation tips and inspection guide for home owners

Electrical Conduit pull boxes provide access to successfully pull wires through metallic or non-metallic conduit & raceways. This article describes the requirements for pull-boxes including

[Contact Us](#)



Electrical Installations: Guide to Pull Box Sizing

Pull boxes simplify wiring installation inside conduit, but it is important to size them as required by the NFPA National Electric Code (NEC).

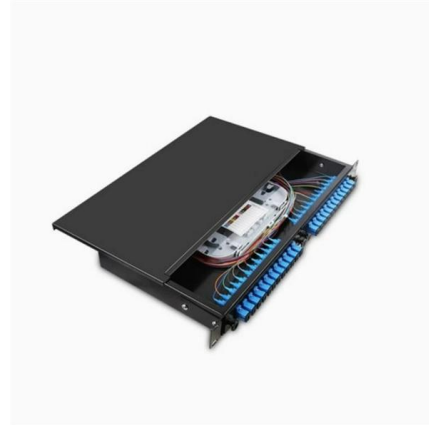
[Contact Us](#)



Conduit Sizing Requirements with Example Calculations

Equations for calculating conduit sizes and space factors requirements in accordance with standards. Worked examples of conduit sizing calculations are

[Contact Us](#)



UNDERGROUND ELECTRIC DISTRIBUTION CONSTRUCTION

I.3. Conduit: A structure containing one or more ducts, duct bank. I.4. Conduit System: The combination of conduits, manholes, handholes, vaults and/or switching enclosures joined to form an integrated

[Contact Us](#)

Conduit Support Spacing Guide - NEC 2023 Rules & Quick Reference

This guide gives you clear spacing rules, how to measure them in the field, and quick reference tables for each common conduit type--EMT, RMC, IMC, FMC, LFMC, LFNC, ENT, and



[Contact Us](#)



NEC Pull Box Sizing Guide for Electrical Code Compliance

Learn how to size NEC pull boxes correctly with code references, real-world examples, and expert tips--ensure compliance and reduce costly

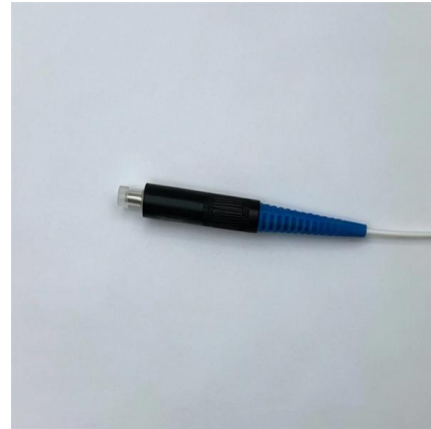
[Contact Us](#)



CD0001U: NV Energy CONDUIT INSTALLATION GUIDE

7.7 Changing of primary or secondary conduit size is only permitted in vaults, manholes, splice boxes, or pull boxes. Conduit runs will be one size continuously with no reducers allowed.

[Contact Us](#)



Conduit Support Spacing Guide - NEC 2023 Rules

This guide gives you clear spacing rules, how to measure them in the field, and quick reference tables for each common conduit type--EMT, RMC,

[Contact Us](#)

Electrical conduit installation tips and inspection guide for home owners

A simple guide to electric conduit wiring for homeowners. How to install and inspect electrical conduit for electric wiring. Tips for installing & inspecting electrical conduit in homes Electrical conduit cutting,

[Contact Us](#)



Pull Box Sizing : A Comprehensive Guide for Engineers

This guide provides a practical breakdown of pull box sizing rules as per NEC Article 314, focusing on different pull configurations and calculations engineers should

[Contact Us](#)



Spacing between conduits, etc

Spacing between conduits, tubing, or raceways shall be maintained. How do you determine the proper spacing? When laying out the conduit, or

[Contact Us](#)



Annex I

The spacing between the outer sides of the duct banks should be at least 75 mm, being a minimum distance of 100 mm from the duct banks the concrete end. The following picture shows several

[Contact Us](#)

How to Install a Cable Distribution Box Safely and

In modern electrical systems, cable distribution boxes (also known as electrical distribution boxes or distribution boxes) play a crucial role as the key

[Contact Us](#)



Design Standard Conduit for Electrical Systems

Conduit Placement: Install continuous conduit and raceways for electrical power wiring and signal systems wiring. Conceal conduits. Exposed conduits are permitted only in the following areas:

[Contact Us](#)



Microsoft Word

When three or more conduits are in a single trench, use conduit spacers that will maintain 3 inch spacing between the conduits. Provide spacers on 5 foot centers.

[Contact Us](#)



NEMA

Premise Wiring Shipboard Wire and Cable
Thermocouple Wire Transit Wire and Cable
Uninsulated Electrical Conductors Low Voltage
Distribution Equipment Back Busway Product
Group Back

[Contact Us](#)



Conduit Fill Chart & NEC Calculator , Wire Capacity Tables

By following NEC guidelines, using accurate calculations, and applying the charts and formulas in this guide, you can size conduits correctly for any application while maintaining code

[Contact Us](#)



PART 1

Conduits entering the telecommunications room or equipment room from above shall be terminated 4 inches below the finished ceiling, but in no case shall the conduits terminate more than 12 inches

[Contact Us](#)

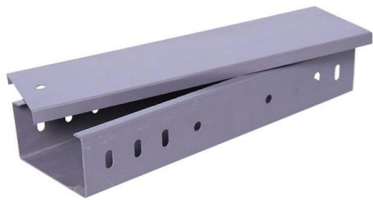




Specification 034. Electrical Installations

TABLE 5A FIXING FOR CABLE SUPPORTS 15
TABLE 6A MINIMUM SPACING OF CABLES 22
TABLE 6B MINIMUM COVER FOR CABLES 22
TABLE 8A CONDUIT AND TRUNKING FIXINGS 29

[Contact Us](#)



Section 26 05 33 Raceway and Boxes for Electrical Systems

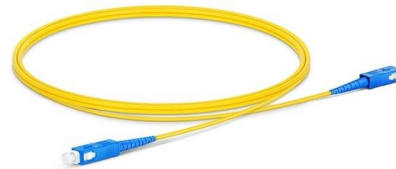
Connect flexible metal conduits to junction boxes with sufficient slack to produce a 125 mm (5 inch) vertical drop midway between the ends of the flexible metal conduit.

[Contact Us](#)

Understanding Distribution Boxes: A Comprehensive Guide

A distribution box, also known as a power distribution box or electrical distribution box, is used to distribute electrical power safely to multiple

[Contact Us](#)



Contact Us

For datasheets, pricing, or custom fiber access solutions, please visit:
<https://frindel.es>