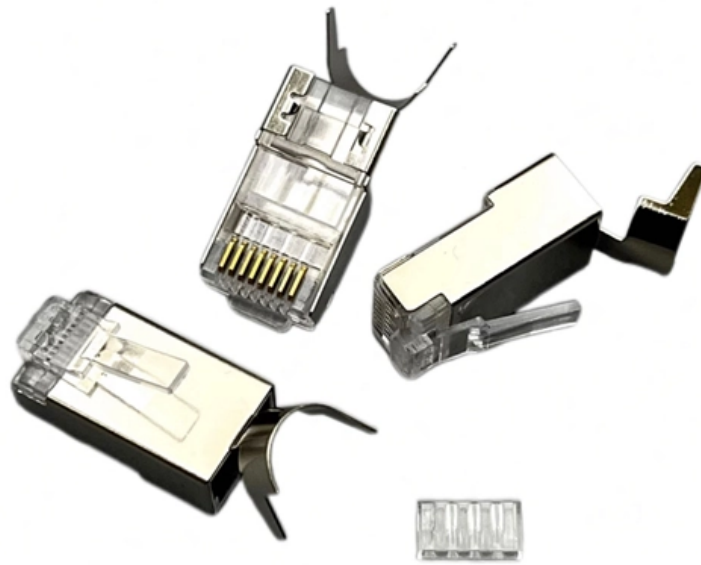


Singapore Imported Liquid-Cooled Switch 200G





Singapore Imported Liquid-Cooled Switch 200G



200G Data Center Switches

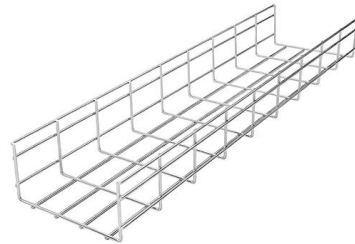
Built with a reliable Broadcom chipset, FS 200G data center switches are next-generation and high-density fixed switches designed for high-performance computing, distributed storage, big data and

[Contact Us](#)

Gems Sensors & Controls

Hier sollte eine Beschreibung angezeigt werden, diese Seite lässt dies jedoch nicht zu.

[Contact Us](#)



S'pore launches test bed for energy-efficient cooling for

SINGAPORE - The world's first tropical climate data centre test bed was launched here on Nov 29 for researchers and industry partners to develop

[Contact Us](#)

Direct Liquid Cooling solutions , HPE Singapore

Are you looking to deploy liquid cooling? Watch a great video by our experts as they introduce the why's, how's and what's of liquid cooling. Also, gain insights into how your peers are planning to deploy



Switches

Exposed Type, 3P, FOR/STOP/REV Power Switch. Basic Building-block Controllers That Mount Directly to Panels for Easier Maintenance. Space-saving Design Ideal for Control Panel Downsizing. Easy

[Contact Us](#)



NEA/HS/6.6/MEA01 NEW CHEMICALS AND MERCURY-ADDED

2 groups of chemicals and 9 mercury-added products will be controlled as Hazardous Substances by the National Environment Agency ("NEA") under the Environmental Protection and Management Act

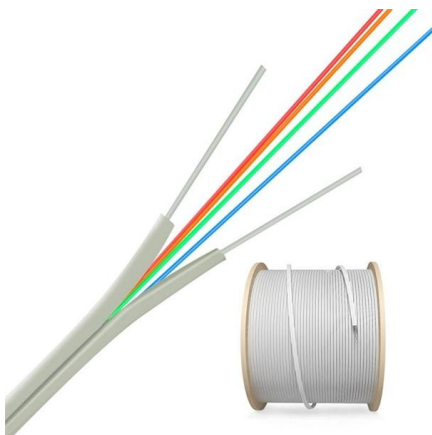
[Contact Us](#)



A Complete Guide to FS N8510-24CD8D: A Future

Explore the FS N8510-24CD8D, a future-ready 200G data center switch built for high-density, scalable, and lossless networking. This guide covers specifications,

[Contact Us](#)





Two-Phase Immersion-Cooled 100G Switch Module

The design, material, and manufacturing specifications offer complete liquid cooling compatibility, allowing the switch to maintain high performance and reliability in a high-temperature, high-density

[Contact Us](#)



DynaNET 10G-01

The DynaNET 10G-01 is a high port density switch for Automotive and rugged applications, where extreme levels of performance, reliability and compactness

[Contact Us](#)

MR-D-17-00363

direct liquid cooled modular bi-directional switch, an accurate thermal fluid dynamic model was made and validated by thermal characterization on an early prototype. Then, the numerical model has been

[Contact Us](#)



Redefining liquid cooling from the server to the switch

BT kicked off the trials with a network switch cooled using Iceotope's Precision Liquid Cooling technology and Juniper Networks QFX Series Switches.

[Contact Us](#)



Exploring the Future of AI Networking: Liquid-Cooled Switches on the

Proactively manage risk: Advanced leak detection, corrosion prevention technologies, and comprehensive monitoring capabilities are being engineered directly into liquid-cooled switch

[Contact Us](#)



Liquid Cooling

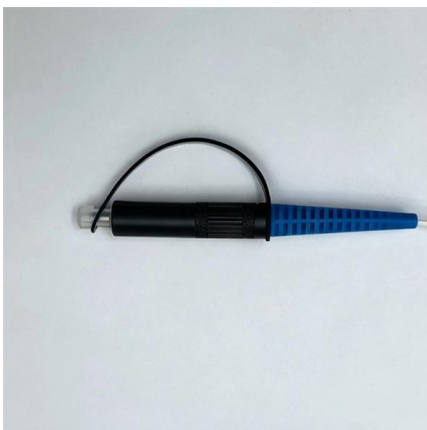
These latest liquid cooling technologies are available to view today at Global Switch's Tseung Kwan O data centre, the largest carrier and cloud neutral facility in the city, located in the heart of the city's

[Contact Us](#)

Liquid Water Oil Sensor Control Flow Switch Professional High

Used in water treatment systems, central air conditioning, water-cooled units and other fields. Suitable for water, ethylene glycol and any other liquid that has no corrosive effect on brass and phosphor

[Contact Us](#)



100/200G Bare Metal Switches

FS 100/200G bare metal switches with Broadcom TH2/TD3/TD4 chips support MLAG, VXLAN, EVPN & more. Disaggregated design enables CAPEX/OPEX reduction. Powered by PicOS® NOS for

[Contact Us](#)



Schneider Electric AvatarOn C: 20A 250V 1G 1WAY or

o The AvatarOn C frameless switch with fluorescent locator provides a soft clicking sound so as not to disturb even the lightest sleeper. o A small weak indicator light

[Contact Us](#)



EMA issues second call for proposals to import low

SINGAPORE - The Energy Market Authority (EMA) has put out a second call for proposals to supply electricity to Singapore from renewable

[Contact Us](#)

200G Liquid/Immersion Cooling Transceivers for Data Center

NADDOD's 800G/400G/200G immersion cooling transceivers, featuring advanced sealing technology and compatibility with industry-standard fluids, deliver efficient heat dissipation and reliable data

[Contact Us](#)



SINAMICS G150 liquid-cooled enclosed drives

SINAMICS G150 SINAMICS® G150 is the Siemens drive solution for high-rating single-motor drives that do not require regenerative feedback into the line supply. These are predominantly applications with

[Contact Us](#)



Pressure Switches , element14 Singapore

Buy Pressure Switches. element14 Singapore offers fast quotes, same day dispatch, fast delivery, wide inventory, datasheets & technical support.

[Contact Us](#)



Buy In Bulk 200g Switch Advanced QSFP56 Ports , Alibaba

Find reliable 200G switches for high-speed networks. Shop our selection of switches from top suppliers. Perfect for data centers and enterprise applications.

[Contact Us](#)

What Are Next-Generation Liquid-cooled Switches Like?

The two types of liquid cooling used on a large scale in the data center field are cold-plate and submerged liquid cooling. Other types such as

[Contact Us](#)



Switches

At Supertron, we offer an extensive range of products that are specifically curated to meet various needs in different industries. Contact us now.

[Contact Us](#)



Liquid Level Switches And Controllers

Flowline liquid level switches and controllers are designed for reliable liquid level detection of chemical, solvent, hydrocarbon and petroleum based liquids. Raptor Supplies offers the entire catalogue of

[Contact Us](#)



Experiment and Numerical Simulation of Immersion Liquid-cooled Switch

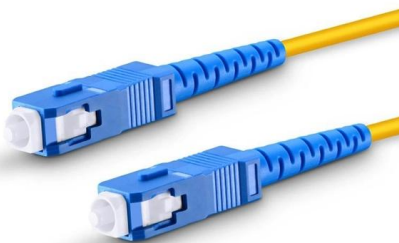
This study focuses on the simulation and experiments of immersion liquid cooling technology. The effects of this technology were analyzed and evaluated through a liquid cooling

[Contact Us](#)

Ruijie Networks Released Near-packaged Optics (NPO) & Cold-plate Liquid

Ruijie 25.6T Silicon Photonics NPO Cold-plate Liquid-cooling Switch Using the latest 112G SerDes switching chip and 64 connectors, Ruijie 25.6T silicon photonics NPO cold-plate liquid

[Contact Us](#)



Flow Switches , Raptor Supplies Singapore

This Dwyer flow switch has a hermetically sealed reed switch with magnetically actuated switching mechanism and a field-trimmable, full-size vane for user convenience. Dwyer Instruments V8-WP

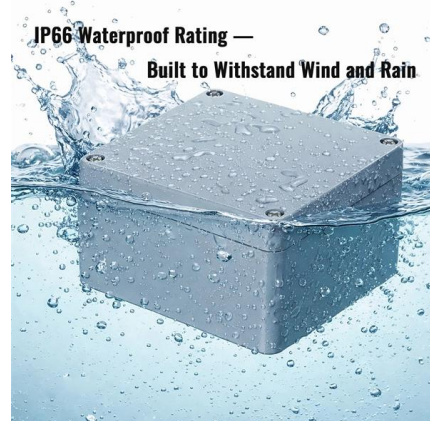
[Contact Us](#)



Data Center Switches

Ruijie's first submersible liquid-cooled switch deployed at large data center scale with high power consumption elimination, energy-saving and emission reduction.

[Contact Us](#)



27056 , Gems Sensors FS-200 Series Shuttle Flow Switch for Liquid,

Buy Gems Sensors FS-200 Series Shuttle Flow Switch for Liquid, 5gal/min Max 27056 or other Flow Sensors online from RS for next day delivery on your order plus great service and a great price from

[Contact Us](#)



Hot Interconnects: Arista Outlines Pathways to Energy

The design accommodates up to 16 x 2U switch blades with tool-less installation, tightly located liquid quick disconnects, and generous space for cable

[Contact Us](#)



Contact Us

For datasheets, pricing, or custom fiber access solutions, please visit:
<https://frindel.es>