



FRINDEL OPTICS

Should cable tray supports be made of channel steel or angle steel





Overview

Angle steel supports are a more traditional and reliable choice for electrical cable tray support. The proper selection between the two depends on factors such as load-bearing capacity, installation environment, and the ease of future adjustments. This publication is intended as a practical guide for the proper and safe* installation of cable ladder systems, cable tray systems, channel support systems and associated supports. B-Line series KwikRail cable tray systems feature rungs with patented fastener holes, allowing installers to easily remove, reposition or add rungs. Pre-punched holes on the I-beam side rails allow for simple attachment of accessories without drilling.



Should cable tray supports be made of channel steel or angle steel



Guide to cable support systems

In addition, a cable support system can be used to separate and arrange cables in groups. The systems are installed on ceilings, walls or floors. The material of a cable support system is normally steel or

[Contact Us](#)

Best practice guide to cable ladder and cable tray

The following recommendations are intended to be a practical guide to ensure the safe and proper installation of cable ladder and cable tray systems

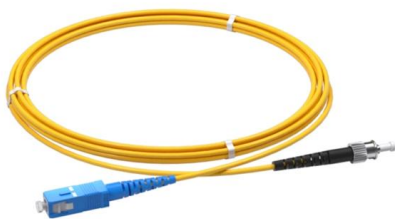
[Contact Us](#)



A Guide To Cable Support Systems

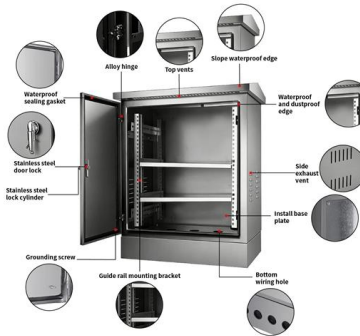
A common type of support is the cable tray. Cable tray is usually U-shaped or trough-shaped. The bottom may be solid or punctuated

[Contact Us](#)



The Ultimate Guide to Channel Structural Steel: Strength, Applications

Discover the significance of channel structural steel in construction with this comprehensive article. Learn about its impressive strength, versatility, and various applications, from framing to bracing.



Cable Tray vs Cable Basket vs Cable Ladder vs Cable

Compare cable tray, basket, ladder & trunking systems. Learn the pros, cons, and best uses for each type, with links to our UK product ranges.

[Contact Us](#)

Understanding Strut Channel Support Systems

What Are Strut Channel Support Systems? A strut channel support system typically consists of metal channels, fittings, fasteners, and accessories

[Contact Us](#)



Best Practice Guide to Cable Ladder and Cable Tray

Cable ladder and cable tray systems The following recommendations are intended to be a practical guide to ensure the safe and proper installation of

[Contact Us](#)



HOW TO CHOOSE THE RIGHT CABLE TRAY

A cable tray is a system used to support and route cables and wiring in an industrial environment. Cable trays are used in various installations, including commercial construction, data centers, computer

[Contact Us](#)



Types of Cable Trays: Ladder, Perforated, Basket, Solid

Cable trays support insulated electrical cables in industrial and commercial settings. There are several types of cable trays, including ladder,

[Contact Us](#)

Best Practice Guide to Cable Ladder and Cable Tray Systems

Where cable ladder and cable tray support systems are fixed to primary supports (e.g. structural steel work or elements of the building) it is important to ensure that the primary supports are strong

[Contact Us](#)



Cable Tray

Cable Tray Cable trays are mechanical support systems that provide a rigid structural system for electrical cables, raceways, and insulated conductors used

[Contact Us](#)

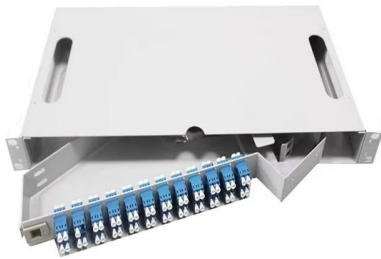


B-Line series Cable Tray Design Considerations

Our wind certification report provides you with list of acceptable B-Line series cable tray supports, fittings and covers based off of the environmental conditions, cable loading, and type of cable tray in your

[Contact Us](#)

Length:14.5mm
Small-end inner diameter:2.0mm
Large-end inner diameter:3.5mm
Outer diameter:5.2mm



Beama Best Practice Guide , Installation Of The System , Cable

The following recommendations are intended to be a practical guide to ensure the safe and proper installation of cable ladder and cable tray systems and channel support and other support systems.

[Contact Us](#)

Unistrut Cable Tray Support Structures

Cable Tray systems are often used to support electric power, signal, control, instrumentation, and communication cables used for power distribution and

[Contact Us](#)



Best practice guide to cable ladder and cable tray

Cable ladder and cable tray systems The following recommendations are intended to be a practical guide to ensure the safe and proper installation of

[Contact Us](#)





Cable Support System Requirements

Unipath System The Unipath cable support system offers a hybrid of the center rail support system and a support structure similar to a bridle ring. Made of a sturdy

[Contact Us](#)



GUIDE CABLE TRAYS TECHNICAL

If it has excellent electrical continuity and is integrated in the installation's equipotential bonding system, a metal cable tray reduces the coupling's impact and thus contributes to good EMC of the electrical

[Contact Us](#)

Types of Cable Trays - Purpose, Advantages,

Cable tray systems are alternatives to wire ways and electrical conduit, which completely enclose cables. Cable trays are capable of supporting all types of

[Contact Us](#)



Cable Tray Support: Rod vs. Angle Steel

Learn about the different types of cable tray support, including rod supports and angle steel supports, and how to choose the right one for your

[Contact Us](#)

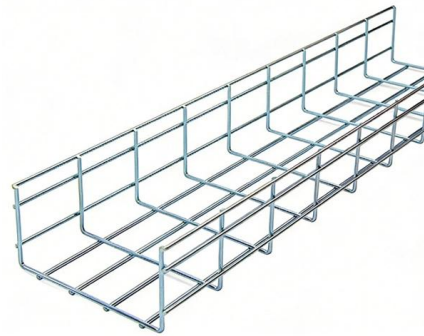




CABLE TRAY SYSTEMS GUIDE

Steel Ladder System Hubbell's NEXTFRAME® Ladder Tray is the effective and widely used cable runway that supports and delivers bundles of cable between cabinets, racks, and closets, along

[Contact Us](#)



Channel tray

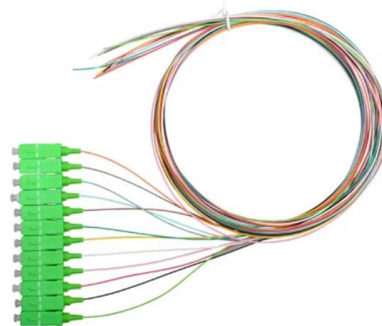
The most important decision to be made in fitting design concerns radius. The radius of the bend, whether horizontal or vertical, can be zero (non-radius), 12 in., 24 in. or greater on a custom basis.

[Contact Us](#)

Cable Tray Technical Guide A practical guide to product selection and

SOLID-BOTTOM CABLE TRAY Providing additional cable protection, solid-bottom cable tray is sometimes preferred to support and protect numerous small instrumentation and control cables.

[Contact Us](#)



Best Practice Guide to Cable Ladder and Cable Tray Systems

This guide covers cable ladder systems, cable tray systems, channel support systems and associated supports intended for the support and accommodation of cables and possibly other electrical

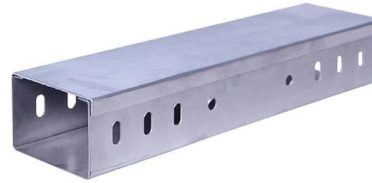
[Contact Us](#)



A Guide to Installing and Supporting Electrical Cable Trays

This guide covers the critical steps, from selecting the right electrical cable tray and performing accurate cable fill calculations to managing a safe cable pull through

[Contact Us](#)



Types of Cable Trays - Advantages, Applications and Sizes

Explore the types of cable trays, their advantages, applications, and standard sizes. Learn how they improve cable management and support various industries.

[Contact Us](#)

What is Cable Tray and How it is used in Industrial

This cable tray is made up of stainless steel wires by welding wires to form the basket-shaped mesh. Cable Trays are normally used for low-voltage

[Contact Us](#)



Comparing Electrical Cable Tray Materials- Aluminium,

Aluminium, steel, or plastic? Compare key features of electrical cable tray materials to find perfect match for your building's requirements.

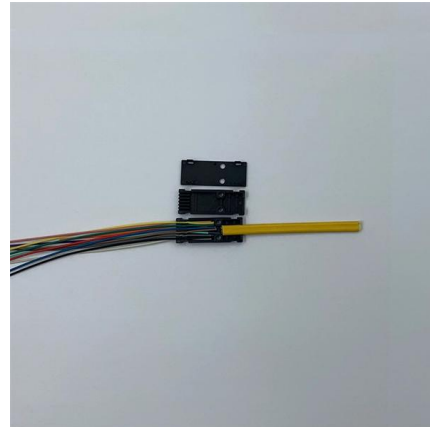
[Contact Us](#)



Ultimate Guide to Cable Tray Selection - Types,

Learn how to choose the best cable tray system for your needs. Explore types, materials, installation tips, and NEC compliance in this expert guide.

[Contact Us](#)



Contact Us

For datasheets, pricing, or custom fiber access solutions, please visit:
<https://frindel.es>