

Short circuit in the 10kV busbar of the power plant





Overview

Apply IEC 60909 formulas Compute initial symmetrical current, peak current, and steady-state current. Check equipment ratings Short-circuit calculations are a daily requirement for electrical engineers who design, operate, or protect power systems. Busbars in power systems are the location where transmission lines, generation sources, and distribution loads converge. The standard produces fault current results for an unloaded network, that is the results do not include load current and the pre-fault conditions do not take account of tap.), Published by DAAAM International, ISBN 978-3-902734-29-7, ISSN 1726-9679, Vienna, Austria DOI:.



Short circuit in the 10kV busbar of the power plant



A Review on Calculation of Busbar 3 Phase fault currents on an

This requires that the fault current be predicted for a fault in any particular location or place where the fault as occurred in the power system. This paper describes the calculation of Busbar 3 phase fault

[Contact Us](#)

BUSBAR PROTECTION

As a result of increased network short-circuit capacity, dedicated differential relays for busbar protections have been applied to minimize the tripping time of the protection and to limit the damage caused by

[Contact Us](#)



Power Plant Switching Station (Switchyard) - Electrical

BUSBAR BUSBAR (or bus, for short) - is a term we use for a main bar or conductor carrying an electric current to which many connections may be made. Buses are

[Contact Us](#)

Selection of Medium Voltage Enclosed Busbar System in Power Plant

It highlights the advantages and disadvantages of each busbar type. Then, considering the technical parameters of the medium voltage busbar system in the power plant and conducting a technical and



Specification sheet

Operation: The switchgear features front control panel and rear termination equipped with a locking door. The door provides access to a permanently attached operating handle, which is used for

[Contact Us](#)



Understanding IEC 60909 for Short-Circuit Calculations

The IEC 60909 standard gives engineers a common framework for calculating these short-circuit currents. This article explains IEC 60909 in simple language, focusing on why it matters, what it

[Contact Us](#)



The protection of busbars

The protection of busbars Busbars are vital parts of power networks because they link incoming circuits connected to sources, to outgoing circuits which feed loads. In the event of a fault on a section of

[Contact Us](#)





Electrical Power Engineering Reference Applications Handbook

A typical layout of such a bus system in a thermal power plant is illustrated in Figure 31.2 (a) and (b). It may comprise sections noted in Section 31.1.1. Gas insulated busbars (GIB) The above features

[Contact Us](#)



Catalog Extract LV 10 · 10/2022

Busbar supports 1) 3P/5P Flat copper profiles
Rated operational voltage U_e IEC UL 508 Short-circuit current Article No. rating SCCR 3-pole

[Contact Us](#)



Bus Bar Arrangement in Power Station:

The testing of feeder circuit breakers can be done by putting them on spare bus-bar, thus keeping the main bus-bar undisturbed. If a fault occurs on the bus-bar, the

[Contact Us](#)



A Review on Selection of Proper Busbar Arrangement for Typical

When a breaker on any circuit of a single busbar system fails, there will be complete shutdown of the station, for however; re-energizing first the effected circuit breaker is disconnected from the busbar

[Contact Us](#)

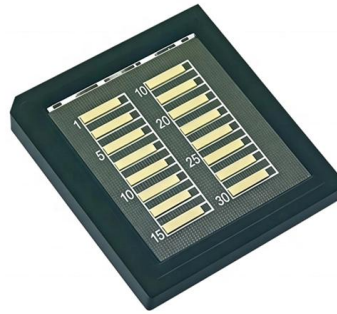




Multiphysics Analysis of Busbars with Various

PDF , This study presents a coupled electric-magnetic-thermal-mechanical analysis of various busbar arrangements

[Contact Us](#)



POWER FLOWS AND SHORT CIRCUIT CALCULATIONS FOR KV

The paper deals with the analyses of power flows for 10 kV and 20 kV operating voltage, the analyses of three- phase short circuit for 10 kV and 20 kV operating voltage, the analyses of two-phase short

[Contact Us](#)

Design of low impedance busbar for 10 kV, 100A 4H-SiC MOSFET

This paper discusses the design of a setup for short-circuit (SC) testing of 10 kV 10A 4H-SiC MOSFETs. The setup can achieve voltages up to 10 kV and currents i.

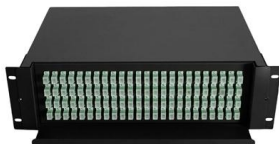
[Contact Us](#)



Copper for Busbars

Busbars that have been subject to short circuit should be allowed to cool and inspected before being returned to service to ensure that all joints remain tight and that the mountings are secure.

[Contact Us](#)





Fuse (electrical)

Melting fuse on electrical power line pole The I 2 t rating is related to the amount of energy let through by the fuse element when it clears the electrical fault. This

[Contact Us](#)



Understanding IEC 60909 for Short-Circuit Calculations

Short-circuit calculations are a daily requirement for electrical engineers who design, operate, or protect power systems. Knowing the prospective short-circuit currents in a network is essential for selecting

[Contact Us](#)

CALCULATION OF ESDD-02-006 SYSTEM FAULT LEVELS Issue

8.1 Short Circuit Current Terminology This section provides a high level summary of some of the terminology used in the calculation of short circuit currents, equipment ratings and duties imposed by

[Contact Us](#)



Technical Application Papers No.11 Guidelines to the construction

In each test, the incoming circuit and the busbars are lo-aded to their rated current and as many outgoing circuits in a group are loaded to their rated current as necessary to distribute the incoming

[Contact Us](#)

Short Circuit Calculations



To find the short circuit current at any point in the system, simply add the factors as they appear in the system from service entrance to fault point and read the available current on Scale 1.

[Contact Us](#)



Microsoft Word

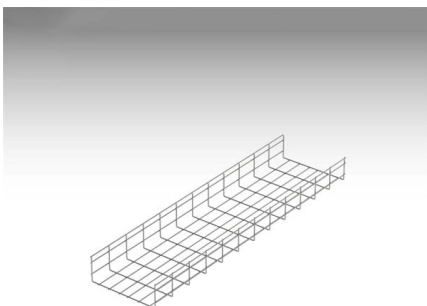
PURPOSE AND SCOPE This document describes the technical requirements for Users' equipment directly connected to the England and Wales Transmission system and located within NGET's

[Contact Us](#)

Understanding Air Circuit Breaker (ACB) Technology

The Air Circuit Breaker (ACB) is a fundamental device in electrical engineering, serving as a critical protective component in power distribution systems. It is essential for safeguarding

[Contact Us](#)



Grid Cable for marine and offshore applications

Bus Protection Theory

Busbars in power systems are the location where transmission lines, generation sources, and distribution loads converge. Because of this convergence, short circuits located on or near the

[Contact Us](#)



CALCULATION OF ESDD-02-006 SYSTEM FAULT LEVELS Issue

Calculation of the DC component of short-circuit current is based on the worst case scenario that full asymmetry occurs on the faulted phase (for a single phase-to-earth fault) or on any one of the

[Contact Us](#)



Short-circuit rating of electrical equipment

Such a fault may, for example, consist of a short circuit in the electrical equipment. On the basis of standards, this Siemens White Paper explains the measures needed to prevent injury to persons and

[Contact Us](#)

Relative short-circuit power at 380-kV busbar short

Download scientific diagram , Relative short-circuit power at 380-kV busbar short circuit taking into account the contribution from the 110-kV level from publication:

[Contact Us](#)



Contact Us

For datasheets, pricing, or custom fiber access solutions, please visit:
<https://frindel.es>