

Server automatically pings the core switch





Server automatically pings the core switch



Option to Disable Reply Ping Automatically

Hello, in some Discord servers, there has been a reoccurring issue about people when they reply they accidentally ping the individual. It would be great if there was an option inside the

[Contact Us](#)

Ping Latency Issues

Ping an IP on the access switch, an IP on the core switch, and an IP on the gateway at the same time. You should then be able to see where the latency is being introduced and can

[Contact Us](#)



A device can be pinged from core switch (router) but not the switch it

If I ping from the core switch, which is the router for the school and is also where the interface ip is defined, it does respond. If I clear the ARP table on the core switch and ping from

[Contact Us](#)

networking

I'm receiving user complaints about poor network application performance between two parts of a large warehouse facility. The software is a curses-based terminal

[Contact Us](#)



ping times between access and core question

Hello All, Just have a question in regards to ping times between access layer switches and the core, so in my org we have about 8 IDFs with 2x 10G links port-channelled up to the core. 1

[Contact Us](#)



Pings from core stack failing

Stacked ICX7550-24 (2 units) running 08.0.95gT241 Pings from the switch to a server in my Azure tenant drop about 50%. Pings from a Windows Server 2022 on the same subnet as the

[Contact Us](#)



A device can be pinged from core switch (router) but not the switch it

This is likely related to how the vlans are setup with the gateways on the core switch, and the vlan where the mgmt interface is on the edge switch where the device is connected.

[Contact Us](#)



Access switches can ping endpoint, core



Hi Folks, Interesting issue I am troubleshooting. Back story: Layer 3 Core switch with single fiber trunk ports heading out to multiple Layer 2 access/idf switches. Hosts connected to

[Contact Us](#)



Routing issues, can ping core switch but not firewall

Routing issues, can ping core switch but not firewall Ask Question Asked 9 years, 5 months ago Modified 9 years, 5 months ago

[Contact Us](#)

Are both connected to the repeater, A switch is a very simple device and can never delay traffic. They pass traffic at wire speed between the ports. They only could get packet loss if a port is

[Contact Us](#)



1075KWHH ESS

Latency to our Core Switch : r/networking

Switches are there to switch. Responding to ping on their SVI/management interfaces is long down the list of priorities for their control plane CPU. If you're having latency pinging through/across the switch

[Contact Us](#)





Sluggish network and erratic pings

Now that I have got a good way through installing the new switching, I'm finding that staff are complaining of intermittent network connection loss, slow performance, and I am seeing pings

[Contact Us](#)



I can't ping to the switch before I ping the core!

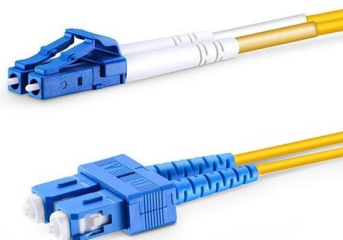
Ideally, try pinging it from its LAN. If you can reach it from there then it's probably a firewall/access control issue. If you can't reach it even from its LAN then it's possible that the

[Contact Us](#)

Core switch not generating arp requests in response to ping

There is no communication with the device until you ping it from the core switch. My theory is that the core switch is not sending an arp packet in response to an inbound syn packet

[Contact Us](#)



Pings from core stack failing

Pings from the switch to a server in my Azure tenant drop about 50%. Pings from a Windows Server 2022 on the same subnet as the switch and running on ESXi hosts connected

[Contact Us](#)



HIGH PING LATENCY TO VLAN GATEWAYS

Hi, I am getting high latency while pinging to VLAN gateways, which is created in core switch. The ping status to the client devices are normal (1ms). The two core switches are 4500,

[Contact Us](#)



Unable to ping inside address of ASA from core switch

I have also changed the switch port to an access port but still unable to ping the inside address of the firewall from the core switch, please see attached both full configurations.

[Contact Us](#)

Can't ping from core switch to other VLANs.

Hi all, Here is my network diagram: From the core switch, I can only ping to vlan 1 (10.65.0.0/24). I can't ping to other vlans (2 & 3). I'm using Router

[Contact Us](#)



Ping Issues on Client and Access Switch

Ping from our access stack to the server - no replies Ping from the core switch to the server - there are replies We have etherchannel configured between the access stack (2960) and

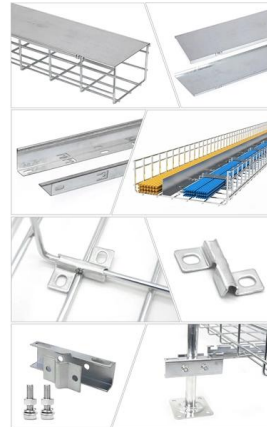
[Contact Us](#)



Can't ping device on another subnet but can ping SVI's both ways

I have a frustrating issue where I cannot ping a device located in another subnet (vlan82) from my source subnet (vlan10). Here are the particulars: IP Routing is enabled on core, I can ping

[Contact Us](#)



Core Switch S12700 Direct Network Ping Timeout and Intermitt

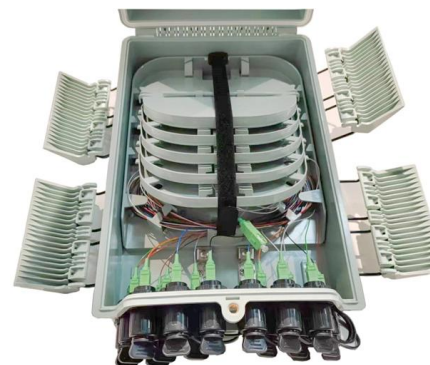
When other vender switch directly connect to S12700 as core switch, it cause network not stable. and most of user has been impacted.

[Contact Us](#)

Ping Packet Drop from Core-Switch to Directly Connected Server

Hi All, I have an Cisco 6500 CS and there is a Cisco Unified Communication Manger Server connected directly to the Core Switch. when we are trting to ping the server the result will be

[Contact Us](#)



Troubleshooting Switch Connectivity Issues by Ping Test

Troubleshooting Switch Connectivity Issues by Ping Test Sends ICMP Internet Control Message Protocol. ICMP is an error reporting protocol. It is used by network devices such as routers, to send

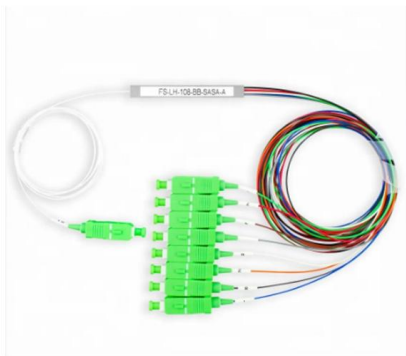
[Contact Us](#)



Switch is working but will not ping?

Once all the changes had been saved, the switch & pc ip addresses were now able to be pinged. However, back in the office (15mins later) pings have stopped to the switch but not to the pc

[Contact Us](#)



Ping Fail from Core Switch

Hey, We just installed some new switches at a remote site. A 3750X as the core switch and around 12 access layer switches distributed around different closets at the site. On the core

[Contact Us](#)

Ping Issues on Client and Access Switch

I suspect this is a simple routing problem - either the firewall doesn't have a route back, or the server vlan has an SVI when it does not need one if you expect it to go via the firewall.

[Contact Us](#)



Ping: A Definitive Guide to the Network Diagnostic Utility

Conclusion This guide has covered core concepts, tools, protocol details and recent progress around the ping utility - arguably the most elemental

[Contact Us](#)



ITPro Today, Network Computing, IoT World Today combine

ITPro Today, Network Computing and IoT World Today have combined with TechTarget . The page you are looking for may no longer exist.

[Contact Us](#)



can't ping from core switch any vlan ip add!

Hi all, so, i configure my core switch (stack of 2 X670V) with different vlan interf ip addresses. all my configuration is on the vrf-default. i'm trying to ping in my core switch his interface

[Contact Us](#)

Contact Us

For datasheets, pricing, or custom fiber access solutions, please visit:
<https://frindel.es>