



FRINDEL OPTICS

Selection Guide for QSFP28 Optical Modules SFP for Intelligent Buildings





Overview

This guide provides a systematic selection process to help you choose the right QSFP28 module every time. You will learn how to verify form factor compatibility, match fiber and distance requirements, validate switch compatibility, consider thermal constraints, and avoid. Check important things like compatibility, how far data must travel, fiber type, connector type, where you will use it, and if it will work in the future. 25G SFP28 is the new access/server baseline; deploy it for port density and long-term value. The Basics: These acronyms define the form factor and speed of a pluggable optical transceiver. SFP modules are used for 1 Gigabit Ethernet, 1G/2G/4G Fibre Channel, and SONET/SDH. It is an optical module based on the QSFP28 (Quad Small Form-factor Pluggable 28) package, mainly used to achieve a high-speed photoelectric conversion function, which designed to meet the growing.



Selection Guide for QSFP28 Optical Modules SFP for Intelligent Buildings



QSFP28 Transceiver: The Ultimate 100G Optical

Discover ascentoptics about QSFP28 transceiver solutions. Master 100G optical modules with in-depth insights and trusted guidance.

[Contact Us](#)

QSFP28 Transceiver: Complete 100G Connectivity Guide

This guide equips network engineers with everything they need to know about QSFP28 optical transceivers -- from module types and specifications to switch compatibility, power

[Contact Us](#)



Features and Applications of the 100G QSFP28

Discover the key features and applications of 100G QSFP28 Multimode optical transceiver modules in the context of cloud computing and 5G networks.

[Contact Us](#)

Understanding QSFP28 Optical Modules: A

By following these guidelines and considering the aforementioned factors, you can confidently select 100G QSFP28 optical modules that meet your performance,

[Contact Us](#)



The Ultimate Guide to SFP, SFP+, SFP28, QSFP+, and QSFP28:

These modules are fundamental building blocks in enterprise-grade fiber Ethernet infrastructures, making them among the most ubiquitous optical networking components deployed

[Contact Us](#)

How to Choose QSFP28: Complete 100G Selection Guide

This guide provides a systematic selection process to help you choose the right QSFP28 module every time. You will learn how to verify form factor compatibility, match fiber and distance

[Contact Us](#)



100G QSFP28 Transceivers: Types, Specs and How to Choose

In this guide, we provide a comprehensive, practical overview of 100G QSFP28 modules, covering their working principles, module types, key specifications, typical applications, and a step-by-step

[Contact Us](#)





100G QSFP28 vs SFP112: High-Speed Optical Modules

QSFP28 and SFP112 are widely used optical modules in high-density data centers, computing networks, and telecommunications. The QSFP28 speed is achieved

[Contact Us](#)



100G QSFP28 Transceiver Selection Tutorial For Beginner's

CWDM Single Lambda QSFP28 transceiver module is designed for use in 100Gbps Ethernet links over 10km single mode fiber, incorporating one channel optical signal, on either 1270,

[Contact Us](#)

SFP vs SFP+ vs QSFP28 vs QSFP-DD: 2026 Optical

SFP vs SFP+ vs QSFP28 vs QSFP-DD: Master optical transceiver selection for 1G to 800G AI networks with our lab-verified guide.

[Contact Us](#)



High-Speed QSFP Loopback Adapter Modules De

How to Choose The Correct QSFP+ or QSFP28 High-Speed Loopback Adapter Module for 40-Gigabit Ethernet or 100-Gigabit Ethernet QSFP

[Contact Us](#)



Complete Guide to QSFP-DD, QSFP28, QSFP56,

SFP56, and SFP28 Optical Modules As high-speed networks continue to evolve, optical transceivers like

[Contact Us](#)



Comprehensive Guide to SFP, SFP+, SFP28, QSFP+, and QSFP28

Dive deep into the world of optical transceivers. Understand the differences between SFP, SFP+, SFP28, QSFP+, and QSFP28. Discover their specifications, working principles, compatibility,

[Contact Us](#)

How to Choose Between SFP, SFP+, SFP28 and QSFP Modules

SFP vs SFP+ vs SFP28 vs QSFP module selection guide. Compare speeds, form factors, compatibility, and choose the right module for ISP networks.

[Contact Us](#)



Optical Transceiver Buying Guide: SFP/QSFP Explained for

Whether for data centers, enterprise networks, or service providers, choosing the right optical transceiver is critical for ensuring seamless, high-speed data transmission over fiber optic

[Contact Us](#)



100G Optical Module Selection Guide: Advantages and Types of

Explore the QSFP28 100G optical module, a vital component for high-speed network connections. Discover its unique features, advantages, and various types to meet diverse

[Contact Us](#)



100G Optical Module Selection Guide: Advantages and Types of QSFP28

Explore the QSFP28 100G optical module, a vital component for high-speed network connections. Discover its unique features, advantages, and various types to meet diverse transmission needs.

[Contact Us](#)

SFP vs SFP+ vs SFP28 vs QSFP+ vs QSFP28: 2026

Compare SFP, SFP+, SFP28, QSFP+ and QSFP28 in this 2026 selection guide. Learn where each form factor fits, decision rules, cost and risk

[Contact Us](#)



Optimizing Network Upgrades with FS 25G SFP28 Modules

After comparing the key parameters of the 25G, 10G, 40G, and 100G optical modules in various network layers, we can clearly see the distinct advantages of the 25G solution in network

[Contact Us](#)



SFP vs SFP+: A Complete Guide to Compatibility and

Explore the ultimate guide to SFP vs SFP+ compatibility, covering interoperability and backward compatibility of SFP+ modules for seamless high

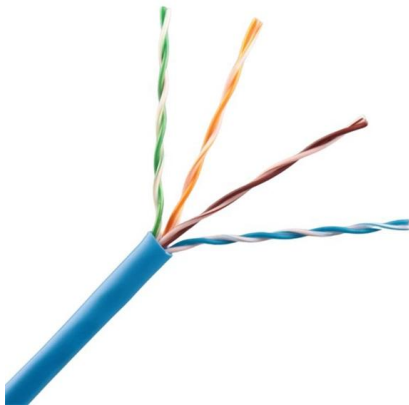
[Contact Us](#)



A Complete Guide to Selecting 100G QSFP28 Optical

This definitive guide cuts through the confusion, exploring all major 100G QSFP28 options - from SR4 and LR4 to CWDM4, Single Lambda, and

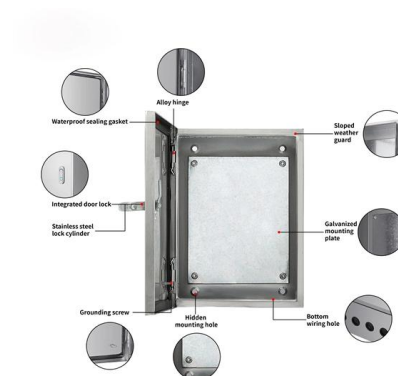
[Contact Us](#)



SFP vs SFP+ vs QSFP28: Transceiver Module Comparison Guide

Compare SFP, SFP+, SFP28, QSFP+, and QSFP28 transceiver modules -- covering SFP module types, SFP fiber connector interfaces, data rates, reach options, and how to choose the

[Contact Us](#)



What Is QSFP28 LR4? In-Depth Analysis of Long

QSFP28 LR4 modules enable reliable long-distance 100G fiber optic links up to 10km, combining 4x25G lanes with WDM technology for high

[Contact Us](#)



QSFP28 100G BiDi Optics: Halve Your Fiber



Capacity,

QSFP28 100G BIDI modules enable 100G Ethernet over duplex LC fiber, offering bidirectional transmission, compact size, and simplified cabling.

[Contact Us](#)



QSFP28 Transceiver: Complete 100G Connectivity Guide (2026)

QSFP28 transceiver guide covering module types, pricing, compatibility, and deployment. Learn how to choose, deploy, and troubleshoot 100G QSFP28 optics.

[Contact Us](#)

SFP vs SFP+ vs SFP28 vs QSFP28 , 2025 Transceiver

Compare SFP, SFP+, SFP28 and QSFP28 transceivers by speed, distance, fiber type and cost. Learn how to choose the right module for data

[Contact Us](#)



Ultimate Guide to Selecting 100G QSFP28 Optical Modules

Enhance your network communications with 100G QSFP28 optical modules, essential for high-speed data transmission and scalable data center solutions. Optimize performance and meet

[Contact Us](#)



SFP, SFP+, SFP28, QSFP+, QSFP28, What Are the

SFP, SFP+, SFP28, QSFP+, and QSFP28 are different fiber transceiver types on the market. They are all hot-pluggable optical modules that

[Contact Us](#)



Contact Us

For datasheets, pricing, or custom fiber access solutions, please visit:
<https://frindel.es>