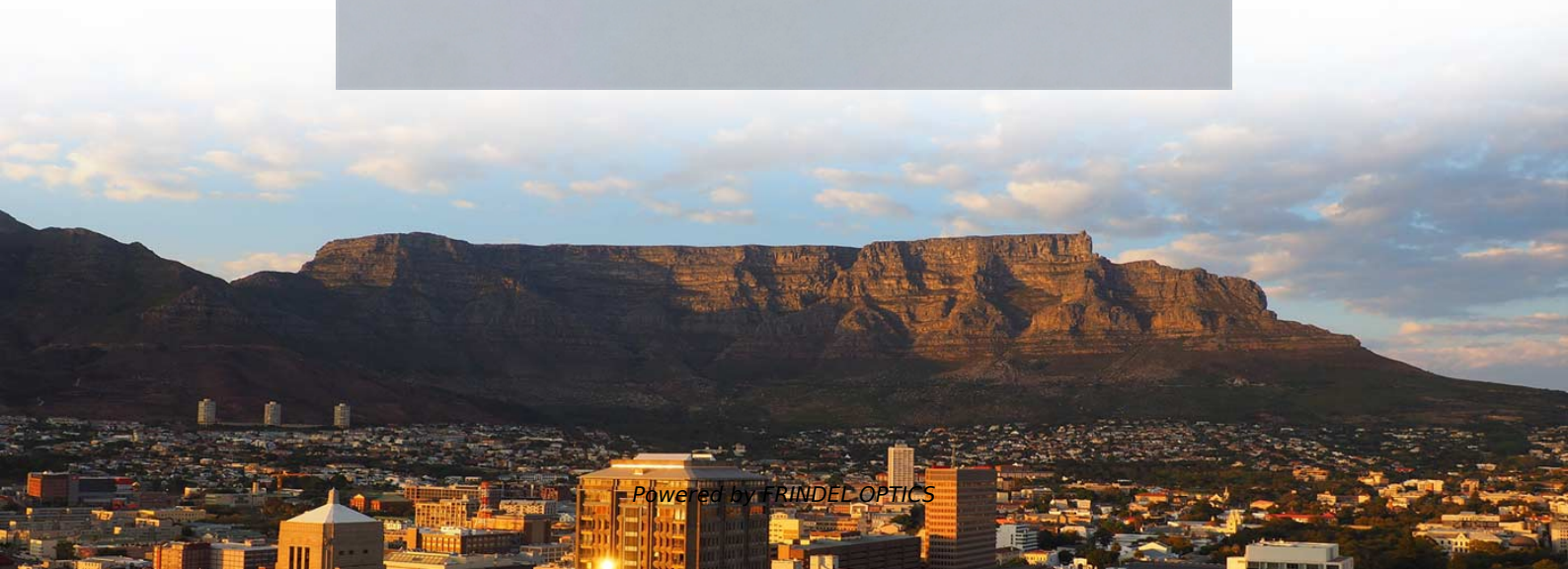


Selection Guide for 100G Pluggable Industrial Ethernet Optical Modules



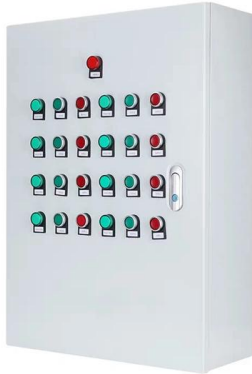


Overview

In this guide, we provide a comprehensive, practical overview of 100G QSFP28 modules, covering their working principles, module types, key specifications, typical applications, and a step-by-step selection framework to help you make confident, informed decisions for your. Check important things like compatibility, how far data must travel, fiber type, connector type, where you will use it, and if it will work in the future. QSFP28, or Quad Small Form-factor Pluggable 28, is the industry-standard form factor for 100 Gigabit Ethernet. In today's rapidly developing network communication field, the QSFP28 100G optical module is vital. With a plethora of models and standards available, ranging from various packaging to transmission types, buyers often find themselves navigating a complex landscape. The "28" indicates that each of the four electrical lanes supports data rates up to 28 Gbps.



Selection Guide for 100G Pluggable Industrial Ethernet Optical Mod



QSFP28 Module Types: Selection Guide for 100G Networks

Selecting the wrong 100G QSFP28 module can become one of the most expensive mistakes in data center networking, potentially inflating project costs by tens of thousands of dollars

[Contact Us](#)

100G QSFP28 Optical Module Selection Guide: Medium to Long

This article tells you how to choose 100G QSFP28 modules for medium and long transmission distances, as well as the advantages of QSFP28 modules and why you should choose it.

[Contact Us](#)



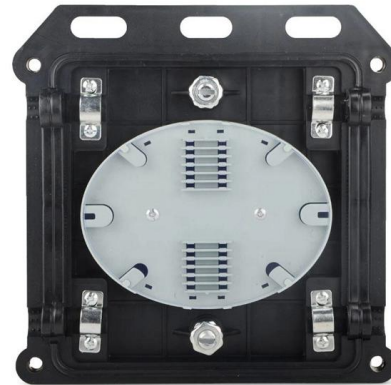
The Ultimate Guide to SFP Modules (2026): Types, Speeds

Confused by SFP vs SFP+? Read the definitive 2026 guide on SFP modules. We explain Single Mode vs Multimode, DDM diagnostics, and how to choose the right transceiver for Cisco, Juniper, and more.

[Contact Us](#)

SFP module specification and selection guide (EN)

Description CXR SFP Modules are industry standard Small Form Pluggable optical modules that serve networking services in the range of low speed to 10-Gigabit application requirements:



10 100 1000 Base T Explained: A Guide to Gigabit Ethernet

Learn what 10 100 1000 Base T means, how Gigabit Ethernet works over copper, supported cable types, speeds, and common network applications.

[Contact Us](#)



400G, 800G, and Terabit Pluggable Optics

But pluggable modules still offer:
o Flexibility of media (cables, optics)
o Flexibility of supplier
o Ease of replacement
o Commonality of designs
->robust module and switch ecosystem

[Contact Us](#)



Pluggable Transceivers

Small Form-Factor Pluggable Transceivers SFP (Small Form-factor Pluggable) transceivers (SFPs) are hot-swappable optical and electrical transceiver units, each providing a different interface according

[Contact Us](#)

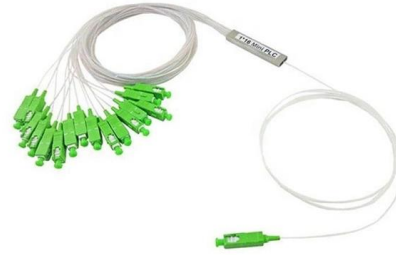




100G Optical Module Selection Guide: Advantages and Types of

Explore the QSFP28 100G optical module, a vital component for high-speed network connections. Discover its unique features, advantages, and various types to meet diverse

[Contact Us](#)



100G QSFP28 Cable and Transceiver Modules Data Sheet

Product overview The FS® 100GBASE Quad Small Form-Factor Pluggable (QSFP28) portfolio offers customers a wide variety of high-density and low-power 100 Gigabit Ethernet

[Contact Us](#)

Pluggable Transceivers Installation Guide

Extreme Networks SFP Modules Extreme Networks switches and routers support SFP (small form factor pluggable) interface modules, also known as mini-GBICs.

[Contact Us](#)



A Comprehensive Guide to 100G Optical Transceiver

This guide explores the key 100G module form factors--CFP, CFP2, CFP4, CXP, and QSFP28--and highlights their applications, advantages, and

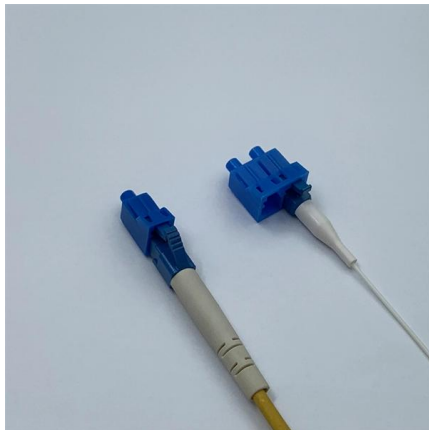
[Contact Us](#)



100G QSFP28 Optical Transceiver: Types & Specs Guide

Optimize your data center upgrade with this expert guide on the qsfp28 optical transceiver. Compare SR4, LR4, and CWDM4 standards for the best network fit.

[Contact Us](#)



SFP vs. QSFP: Differences, Use Cases, and How to Choose

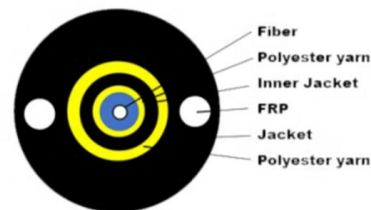
SFP (Small Form-factor Pluggable) is a compact, hot-swappable, single-lane optical transceiver family designed for 1G, 10G, and 25G Ethernet and Fibre Channel applications. It is widely deployed across

[Contact Us](#)

Cisco SFP Modules for Gigabit Ethernet Applications

This data sheet describes the benefits, specifications, and ordering information for the Cisco SFP Modules for Gigabit Ethernet Applications.

[Contact Us](#)



Selecting the Perfect 100G Optical Module Packaging:

Say goodbye to confusion and hello to clarity--your ultimate guide to 100G modules is just around the corner. Stay tuned! 100G Optical Module: How

[Contact Us](#)



Optic Modules Datasheet

These platforms support multiple interface types and technologies such as Ethernet, ATM, and SONET. Depending on the deployment scenario, they support different pluggable optic modules that can be

[Contact Us](#)



10G SFP+ Optical Transceiver Selection Guide

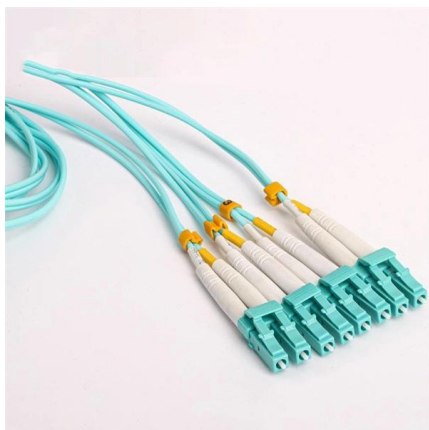
The SFP+ (Small Form-factor Pluggable Plus) transceiver is a compact, hot-swappable module used for 10 Gigabit Ethernet applications. It is

[Contact Us](#)

LPO MSA Announces Release of Specification for Linear Pluggable Optical

OFC2025, San Francisco -- The LPO MSA (Linear Pluggable Optics Multi-Source Agreement) Group announced today the completion and availability of the 100 Gb/s per lane Linear

[Contact Us](#)



100G QSFP28 Transceivers: Types, Specs and How to Choose

In this guide, we provide a comprehensive, practical overview of 100G QSFP28 modules, covering their working principles, module types, key specifications, typical applications, and a step-by-step

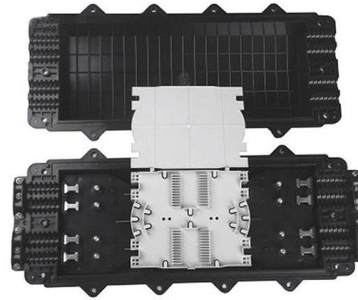
[Contact Us](#)



100GBASE QSFP-100G Modules Data Sheet

The Cisco QSFP28 to SFP28 Adapter (QSA) Module offers 25, 10 and 1 Gigabit Ethernet Connectivity for QSFP 100G ports. The adapter gives

[Contact Us](#)



Arista Optics Modules and Cables

Arista's Optical Modules and Cable portfolio offer a wide variety of high-density and low-power 800G (dual 400G), 400G, 200G, 100G, 50G, 40G, 25G, 10G, 1G, and 100M Ethernet connectivity options

[Contact Us](#)

\$SITM KEY READ-THROUGHS FROM SITIME Q1 2026 EARNINGS

CPO could extend AI optics content from pluggable modules into the switch architecture itself. The call supports the view that AI networking will increasingly depend on tightly integrated

[Contact Us](#)



100G to 1.6T Optical Module PHY Product Selection Guide

Broadcom's Active Copper PHY portfolio enables DAC cable providers to build very low insertion-loss profile, ultra-low latency, ultra-low power cables for 100G/400G/800G/1.6T hyperscale/AI networks

[Contact Us](#)



Comprehensive Guide to Optical Transceiver

Introduction Optical modules are critical components in fiber optic communications, enabling the conversion between electrical and optical signals.

[Contact Us](#)



Complete Guide to Choosing the Right 100M Optical

Table of Contents In the vast ecosystem of network infrastructure, the humble 100M optical transceiver (or 100M SFP module) remains a critical

[Contact Us](#)



Contact Us

For datasheets, pricing, or custom fiber access solutions, please visit:
<https://frindel.es>