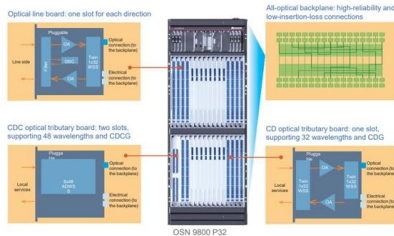


Secondary power distribution box in the tunnel





Secondary power distribution box in the tunnel



Differences between primary and secondary distribution

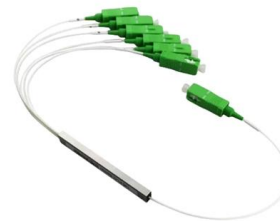
Power Distribution Basics This article will clarify certain frequently misunderstood terms among novice engineers: primary and secondary systems,

[Contact Us](#)

Electrical power supply , Road Tunnels Manual

The power required for supplying a tunnel is directly related to the nature and number of equipment installed in it. Depending on the amount of electrical energy

[Contact Us](#)



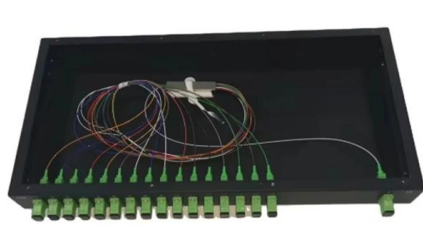
Energieversorgung und -verteilung im Tunnel , Phoenix Contact

Power supply and distribution in a tunnel Tunnels are home to a variety of applications that need to be supplied with power in a high-availability configuration. Particularly critical subsections, such as

[Contact Us](#)

Secondary LV/MV distribution substations in a nutshell

Substation power supply The general method of supplying bulk power to buildings, factories or other complexes is by means of an MV supply, usually at





(PDF) Structured Distribution of Electric Power Systems: the

A special power distribution, "brush-distribution," is suitable for the strategic buildings with higher risk for seismic event and for the road tunnels against fire. The electrical power system of a roadway tunnel

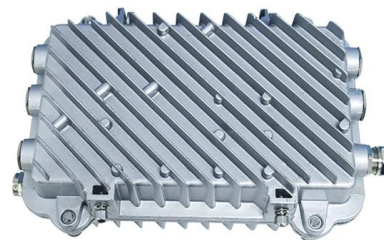
[Contact Us](#)



The Meaning and Function of Primary, Secondary, and Tertiary

Follows the principle of "one machine, one switch, one RCD, one box, one lock," ensuring no single switch controls multiple devices. This explanation aims to clarify the roles and functions of

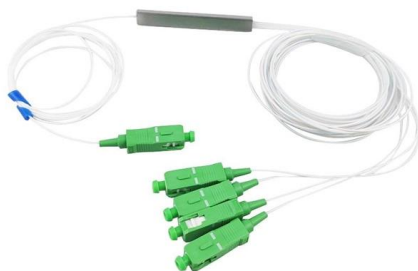
[Contact Us](#)



Power Distribution Boxes Explained Simply

Discover the essentials of a Power Distribution Box--how it works, key types, benefits, and tips to ensure safe, efficient electrical power management.

[Contact Us](#)





Structured Distribution of Electric Power Systems: The Example of a

A special power distribution, "brush-distribution," is suitable for the strategic buildings with higher risk for seismic event and for the road tunnels against fire. The electrical power system of a

[Contact Us](#)



Combination units and power distributors for tunnels

The modular structure of the AMAXX enclosure ensures plenty of room for connecting cables, also thick ones. Thanks to pull-out carry rails and a hinged

[Contact Us](#)

Power supply and distribution in a tunnel , Phoenix Contact

Power supply and distribution in a tunnel Tunnels are home to a variety of applications that need to be supplied with power in a high-availability

[Contact Us](#)



Construction of Utility Tunnel power supply and distribution system

Only by constructing a safe and stable power supply and distribution system inside the pipe gallery can it effectively ensure personal safety and the reliability of pipeline operation.

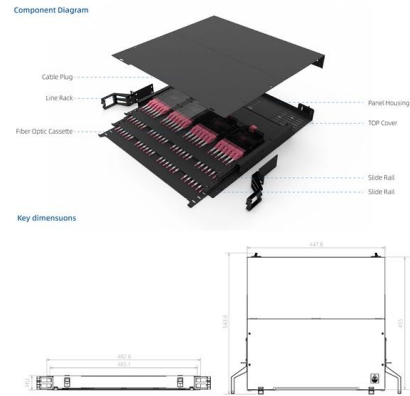
[Contact Us](#)

Tunnel Power and Lighting Assemblies



In addition, through our involvement with many tunnel projects, we have acquired much practical experience in the detailed design of Mains Distribution Assemblies, Tunnel Distribution Assemblies,

[Contact Us](#)



Power supply and distribution in a tunnel , Phoenix Contact

Starting from the main distribution, the TAP box supplies power to your individual tunnel applications, such as the lighting and evacuation systems. This protects

[Contact Us](#)

Home

Our G81 Technical Library contains information to help you with your works. Enter a search term, or select a category, to find the document you are looking for. View more

[Contact Us](#)



Power System Design Criteria for the Service Continuity of Road Tunnels

For lighting and ventilation systems this article proposes original design criteria for the distribution configuration of the electrical power supply and recommendations for the correct sizing of the power

[Contact Us](#)





Receptacle combination and power distributors for tunnels

Tunnel receptacle combination are key components of every tunnel system. They need to meet extremely strict requirements in terms of stability and strength. Our

[Contact Us](#)



Discover Europe's digital cultural heritage , Europeana

Hier sollte eine Beschreibung angezeigt werden, diese Seite lässt dies jedoch nicht zu.

[Contact Us](#)

Energy distribution boxes, tunnel lighting

The Tunnel Distribution & Lighting Box provides tunnel contractors with a complete solution for temporary electrical installation that complies with competent local authorities.

[Contact Us](#)



5-INCH COLOR TOUCHSCREEN

Intuitive operation, easily accessible with just one touch



Electric power distribution

A 50 kVA pole-mounted distribution transformer Electric power distribution is the final stage in the delivery of electricity. Electricity is carried from the transmission

[Contact Us](#)



Energieversorgung und -verteilung im Tunnel , Phoenix

Power supply and distribution in a tunnel Tunnels are home to a variety of applications that need to be supplied with power in a high-availability

[Contact Us](#)



Development of a Secondary Power Distribution Box

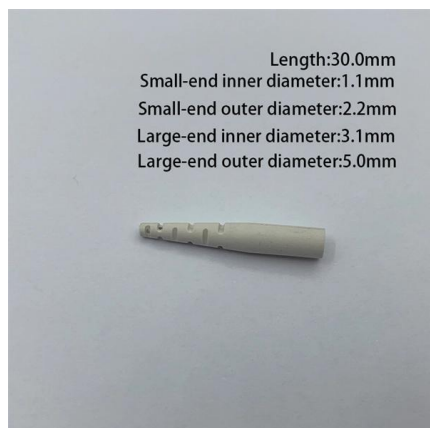
Development of a Secondary Power Distribution Box A major focus on the development of efficient electrical grid structures of aircrafts is the design

[Contact Us](#)

Distribution Automation Handbook

3.14 Primary Distribution Substations A primary distribution substation is the connection point of a distribution system to a transmission or a sub-transmission network. Outgoing feeders from a

[Contact Us](#)



Tunnel-based power supply

wer distribution network. This aspect could be of particular interest in connection with the infrastructure needed for loading of electric vehicles along highways. The fast-charging stations discussed here are

[Contact Us](#)



Research and Application of Tunnel Power Supply System

In order to ensure power supply for important loads such as monitoring in service area, a power generation and distribution station is set up in service area, which is connected with two 10 kV

[Contact Us](#)



Clem7 Tunnel Electrical Design Overview , PDF

Tunnel Electrical Power Systems Design - Free download as PDF File (.pdf), Text

[Contact Us](#)

Tunnel-based power supply

3.1. Tunnel conception tunnel profile (Fig. 3). With a clear width of 3.0 x 2.0 m, up to four cable systems (two cables per HVDC system) with diameters of 150 - 160 mm each can be installed. The tunnel

[Contact Us](#)



Contact Us

For datasheets, pricing, or custom fiber access solutions, please visit:
<https://frindel.es>