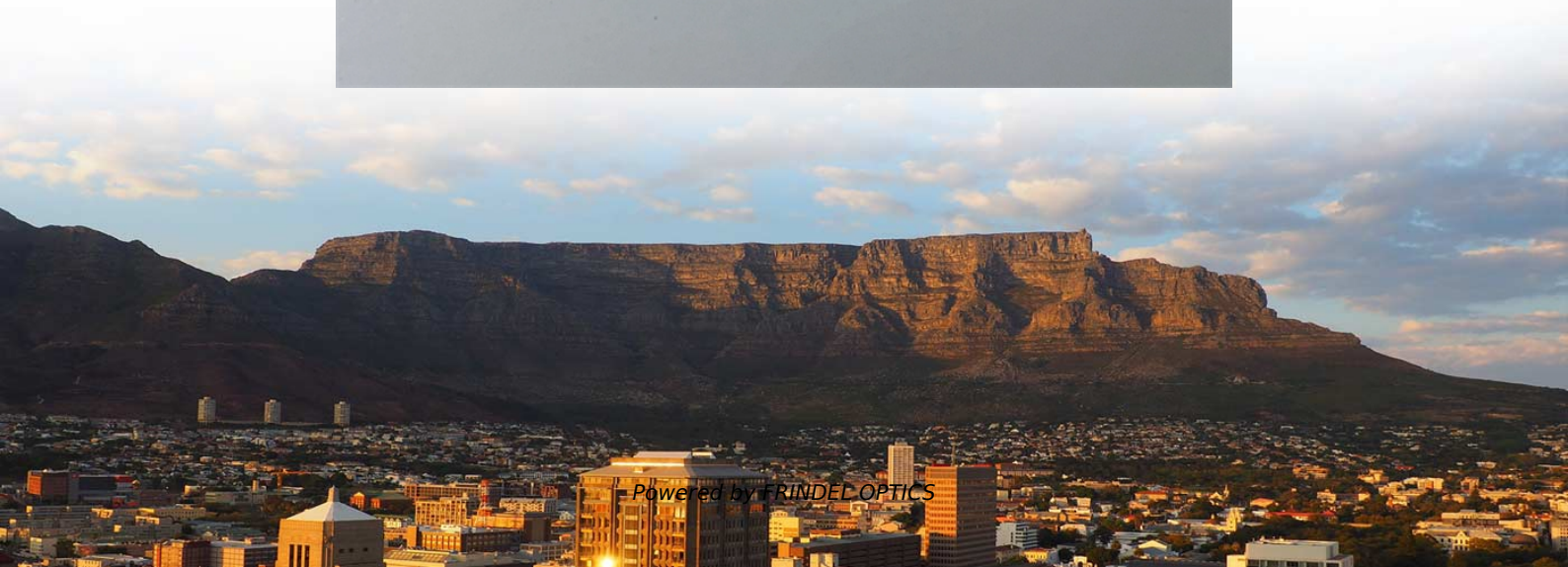
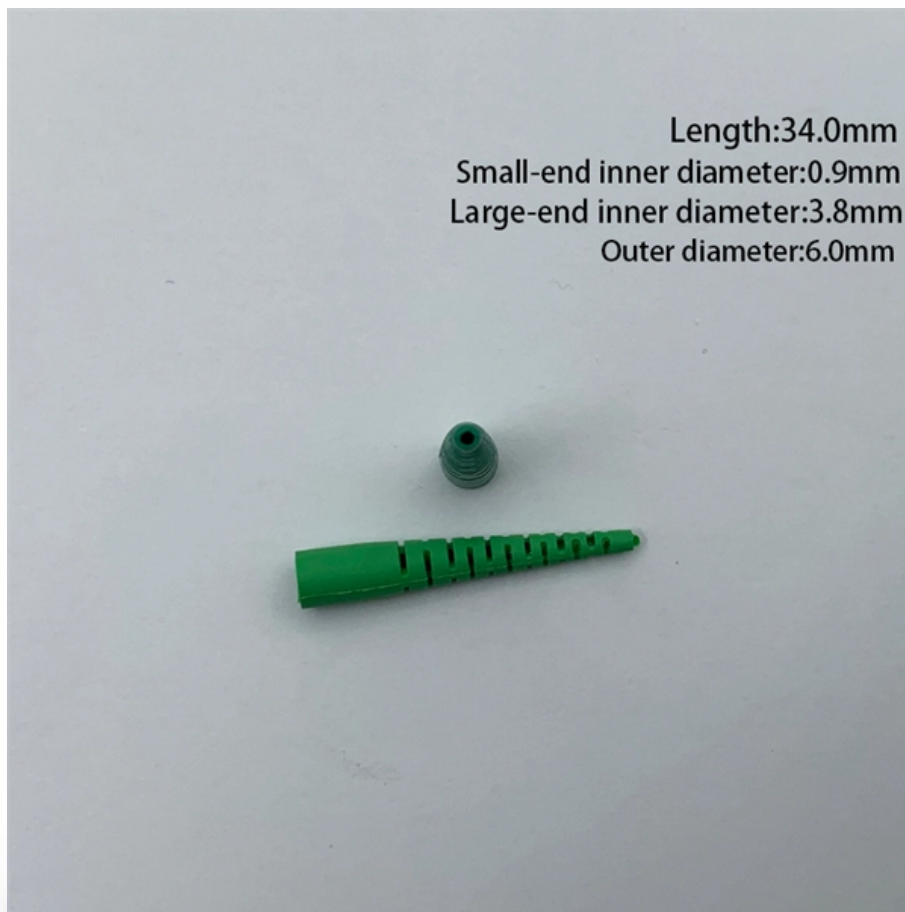


# **Schematic diagram of fiber optic panel thermal fusion technology**





## Schematic diagram of fiber optic panel thermal fusion technology

---



### Types of Fiber Optic Patch Panels

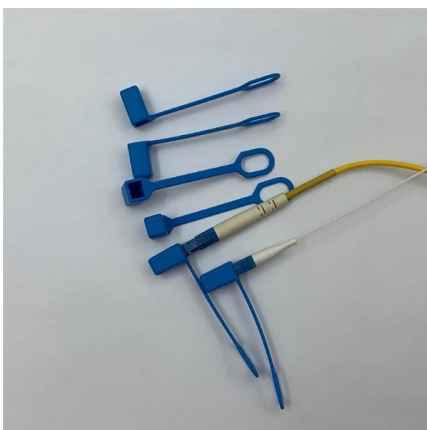
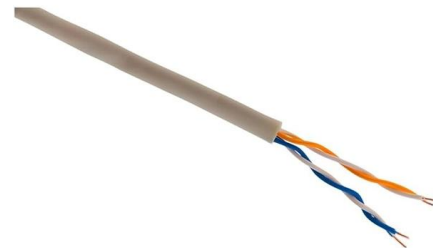
The fiber optic patch panels can accommodate connector panels, connectors, patch cords, associated trunk cables, and usually come with cable management. With the use of fiber optic patch cables,

[Contact Us](#)

### Fusion Splicing: What's and How's Answered? , Versitron

There are two ways of fiber optic cable termination, namely, connectors and splicing. Out of which, splicing is chosen for connecting two bare

[Contact Us](#)



### Fiber Optic Patch Panel Types & Best Practices

Explore Fiber Optic Patch Panel Types, Rack-Mount & Wall-Mount Panels, Connectivity Options, Troubleshooting, Upgrades, and Best Practices.

[Contact Us](#)

### FIBER OPTICS

A device used for characterizing a fiber, wherein an optical pulse is transmitted through the fiber and the resulting backscatter and reflections are measured as a function of time.

[Contact Us](#)



- 50KW/100KWH
- HIGHER POWER OUTPUT IN OFF-GRID MODE
- CONVENIENT OPERATION & MAINTENANCE
- PRE-WIRED



### UW Polymer Optics Lab

Below are plots of the measured and numerically predicted free-surface shapes for a range of preform feed speeds. At higher mass throughput, the polymer

[Contact Us](#)

### TR-3552: Optical network installation guide

Abstract This document is intended to serve as a guide for architecting and deploying fiber optic networks in a customer environment. This installation planning guide describes some basic

[Contact Us](#)



Length:44mm  
 Small-end inner diameter:3.6mm  
 Large-end inner diameter:5.5mm

### (a) Schematic breakdown of main layers of an optical

As Figure 2 a illustrates, an optical fiber is mainly made up of two axial glass layers -the central one called the core and the surround layer the cladding.

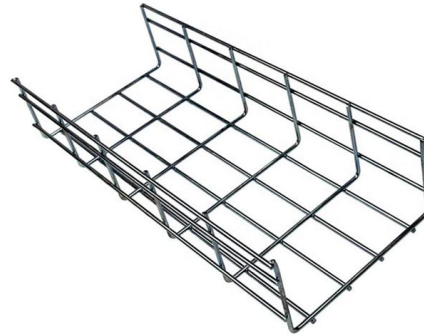
[Contact Us](#)



## Fibre Optic Cable Fusion Splicing Tutorial: Techniques

Mastering fusion splicing is essential for achieving reliable and efficient fibre optic cable connections in network installations. By understanding

[Contact Us](#)



## Fiber Systems Technical Drawings

Be among the first to receive important product updates, insights and news.

[Contact Us](#)

## Schematic drawing of fiber ribbon interconnected

Download scientific diagram , Schematic drawing of fiber ribbon interconnected glassPack e/o module The main features of the concept are: from publication:

[Contact Us](#)



## Fiber Optic Patch Panel: 10 Best Options for 2025 Success

Discover the best fiber optic patch panel options for 2024. Learn how to choose, install, and maintain your fiber network for

[Contact Us](#)



## Basics of Fiber Optics

In order to comprehend how fiber optic applications work, it is important to understand the components of a fiber optic link. Simplistically, there are four main components in a fiber optic link (Figure 1).

[Contact Us](#)



## The FOA Reference For Fiber Optics

Follow manufacturer's requirements for servicing. Virtual Hands On, Fusion Splicing Virtual Hands On, Ribbon Splicing Detailed Instructions For Fusion Splicing With

[Contact Us](#)

## Schematic structure of the thermo-optically tunable

Figure 1 shows the schematic of the proposed thermo-optically tunable fused fiber coupler. A 2 2 fiber coupler is made by using the conventional fusion and

[Contact Us](#)



## Fiber Optics Network Diagram , EdrawMax Template

As the definition goes, network diagrams are a graphical portrayal of the events and activities of any given project. A good network diagram shows

[Contact Us](#)



### **Coupled thermal modeling and experimental validation in large fiber**

To address the aforementioned challenges, this study develops a high-fidelity, multiphysics-coupled numerical model for the FOP VPH process. A complete geometric model was first established, and

[Contact Us](#)



### **FIBER OPTICAL COMMUNICATIONS (R17A0418) Lecture Notes**

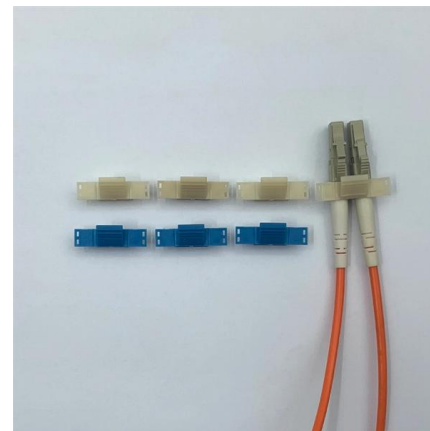
skew rays: In a multimode optical fiber, a bound ray that travels in a helical path along the fiber and thus (a) is not parallel to the fiber axis, (b) does not lie in a meridional plane, and (c) does not intersect the

[Contact Us](#)

### **Coupled thermal modeling and experimental validation in large fiber**

The fabrication of large fiber optic panel (FOP) is constrained by hot-pressing-induced fracture and ion-diffusion-induced chromatic aberration, primarily caused by non-uniform heating and prolonged ion

[Contact Us](#)



### **Network Diagram for Fiber Optics**

A fiber optics network diagram illustrates how high-speed data travels from an internet service provider to end users. These diagrams help engineers plan

[Contact Us](#)



## Understanding the fiber optic network diagram and its

Fiber optic network diagrams represent the architecture and connectivity of fiber optic systems, and their design philosophy integrates

[Contact Us](#)



## Schematic of FOC cable connection for multiple network

Download scientific diagram , Schematic of FOC cable connection for multiple network applications from publication: Performance Analysis and Monitoring of

[Contact Us](#)



## The FOA Reference For Fiber Optics

Rather than telling you how to design a FTTH network, we will illustrate some of the different network architectures, construction methods, etc. possible, then offer

[Contact Us](#)



## The FOA Reference For Fiber Optics

There is really no way to generalize on the design process for fiber to the home (FTTH) networks - or any fiber optic network for that matter - since every system

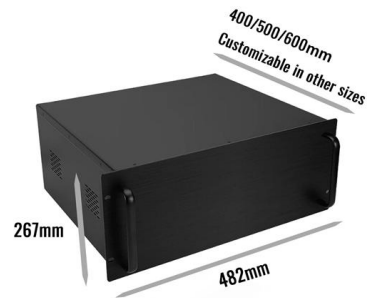
[Contact Us](#)



## The FOA Reference For Fiber Optics

Fiber optic network design refers to the specialized processes leading to a successful installation and operation of a fiber optic network.

[Contact Us](#)



### MORE CASES PRESENTATIONS



### Schematic illustration of thermal diffusion used for

Download scientific diagram , Schematic illustration of thermal diffusion used for manufacture in-fiber integrated couplers. (a) Asymmetric twin-core fiber coupler.

[Contact Us](#)

## Contact Us

---

For datasheets, pricing, or custom fiber access solutions, please visit:  
<https://frindel.es>