

Schematic diagram of a linear laser diode





Schematic diagram of a linear laser diode



Laser Diode: Working Principle, Diagram & Applications

Learn laser diode working, construction, and uses with diagrams. Master key concepts for JEE, NEET, and board exams. Boost your Physics score now!

[Contact Us](#)

Laser Diode Characteristics, Precautions for Use and Drive Circuit

Laser diodes (LD) are semiconductor devices that convert electrical energy into high-power optical energy. These devices are currently used in the fields of telecommunications and medicine and in



[Contact Us](#)



Laser Diode Drive Circuit Design Method and Spice Model

Laser Diode Drive Circuit Design Method and Spice Model ROHM offers laser diodes (LDs) for Light Detection and Ranging (LiDAR). This application note will introduce ROHM's LD line-up and show

[Contact Us](#)

Laser Diode Characteristics, Precautions for Use and Drive Circuit

This is a document on the fundamentals of laser diodes explains the characteristics of laser light, package structure, and how to read the characteristics. Examples of laser diode driving circuits and



Laser Diode Driver Basics and Design Fundamentals

Laser diodes are highly susceptible to damage from forward and reverse voltage surges and transients, and they require a special set of

[Contact Us](#)



LASER Diode Driver : 11 Steps

LASER Diode Driver: & nbsp; & nbsp; & nbsp;For the driving of the LASER diodes (LD) special drivers circuits are used. They can work in two ways : 1) produce

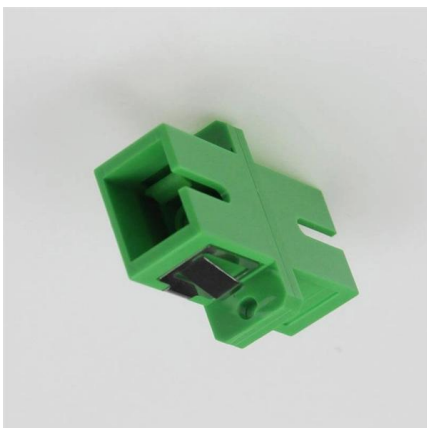
[Contact Us](#)



Laser Diode Technology 101: What is it & How it Works

Laser Diode Technology 101: What is it & How it Works Learn about laser diode technology, including history, construction, & applications - everything you need

[Contact Us](#)





Laser Diode Driver

We can use a voltage-controlled current source to implement a laser diode driver. Compared with a Switched (PWM) drivers, this simple linear laser diode driver

[Contact Us](#)



Linear Laser-Driver IC

The ASIC drives an array of four laser-diodes converting the analogue data produced by the front-end APV chips into amplitude modulated optical signals. Each laser-driver in the IC contains a

[Contact Us](#)



Driving circuit examples of laser diodes

At same time, reference voltage V_2 is generated by zener diode and volume. OP2 always control the base current for output transistor so that it is always $V_1=V_2$ and constant current flows into LD.

[Contact Us](#)



Laser Diode Tutorial

The purpose of this laser diode tutorial is to provide the information necessary to create a long lifetime, stable laser diode system. Much of what will be discussed will be in general terms of laser diode

[Contact Us](#)



How to Build a Laser Diode Circuit

They are used in laser printers, laser fax machines, laser pointers, measurement equipment, bar-code and UPC scanners, and in high-performance imagers, as

[Contact Us](#)



Schematic structure of the laser diode. (a) cross-section,

915nm high-power and high-reliability single emitter laser diodes based on Asymmetric Decoupled Confinement Heterostructure (ADCH) are demonstrated.

[Contact Us](#)



Laser Diode Schematic Diagram

Every laser diode system contains additional components, such as optical lenses, power supplies, actuators, and controllers. All of these elements

[Contact Us](#)



Laser Circuit Diagram

The most common type of laser circuit diagram is the "schematic" style, which uses symbols to represent the various components. Each symbol

[Contact Us](#)





Constant Current Laser Diode Driver Circuit Using

Constant Current Laser Diode Driver Circuit Using OPA2350 OpAmp The voltage-controlled current source circuit can be used to drive a constant

[Contact Us](#)



Laser Diodes Explained: From Light Source to Everyday

Unlock the secrets of laser diodes! Explore how they work, their construction, different types, and surprising uses in everyday tech - from CD

[Contact Us](#)

Schematic Diagram Laser Diode

A schematic diagram is a graphical representation of how a particular system works. For example, a laser diode schematic can explain the different

[Contact Us](#)



Laser Diode Driver Circuit - A Beginners Guide - Flex PCB

Switching Transistor: A transistor is used to switch the laser diode on and off rapidly, enabling pulsed operation for applications like data transmission

[Contact Us](#)



AN-LD13: Laser Diode Driver Basics

The block diagram in Figure 1 shows a very basic laser diode driver (or sometimes known as a laser diode power supply). Each symbol is defined in Table 1. Laser diode drivers vary widely in feature



[Contact Us](#)



How to Build a Laser Diode Circuit

In this article, we will show how to connect and build a simple laser diode circuit to get light output from a laser diode.

[Contact Us](#)

Laser Diode: The Ultimate Beginner's Guide

This is the ultimate beginner's guide to the laser diode. Learn how

[Contact Us](#)



Laser Diode Schematic Diagram

A laser diode schematic diagram is a visual representation of how electrical components are connected and interact with one another in a laser

[Contact Us](#)



Laser Diode

Laser Diode: Construction, Working, Types, Advantages, Disadvantages & Applications Laser diode similar to LED is used for producing light but the light is

[Contact Us](#)



Driving circuit examples of laser diodes

Driving circuit examples of laser diodes May. 21, 2020 Optical module Business Unit Photonics Div.

[Contact Us](#)



What is LASER Diode? Working Principle, Circuit

LASER diodes are one of the major optical sources, used in the optical communication for light generating purpose. LASER is an acronym for

[Contact Us](#)



Chapter 1 Laser Diode Basics

Laser diodes are unique compared with other types of lasers. A little background knowledge of laser diodes will be helpful for the readers to understand the contents of this book. We will only briefly

[Contact Us](#)



Laser diode

The laser diode chip removed and placed on the eye of a needle for scale A laser diode with the case cut away. The laser diode chip is the small black chip at the

[Contact Us](#)



Laser Diode Driver - Electronic Circuit Diagram

A laser diode driver can be implemented using voltage-controlled current source. This simple linear laser diode driver gives cleaner drive current than a switched

[Contact Us](#)

Contact Us

For datasheets, pricing, or custom fiber access solutions, please visit:
<https://frindel.es>