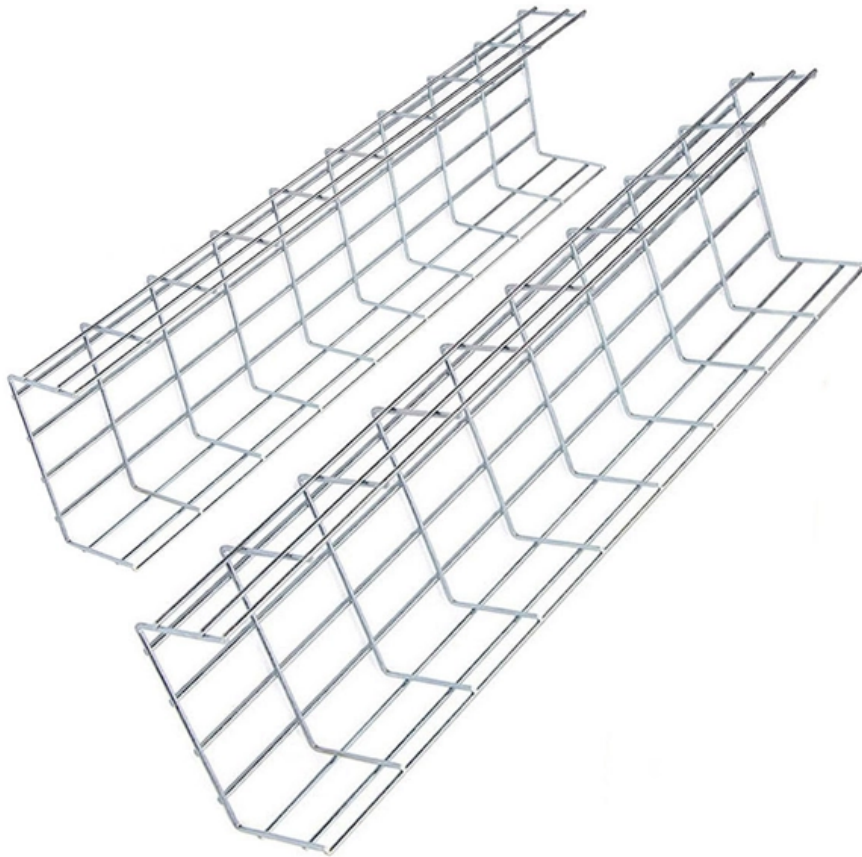


# **Safety Inspection Standards for Suspended Platform Electrical Distribution Boxes**





## Safety Inspection Standards for Suspended Platform Electrical Distr

---



### **Hse alert 14 2017 electrical distribution boxes , DOCX**

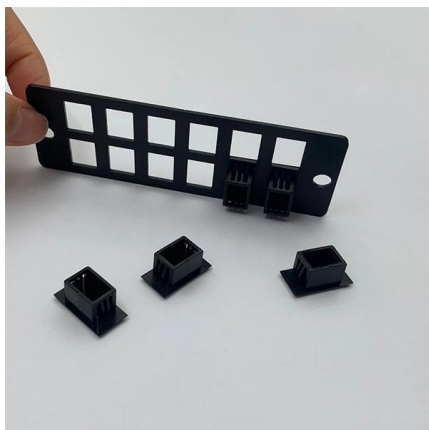
HSE Alert #14 emphasizes the need for compliance with electrical distribution box standards across all projects by January 31, 2018. Key requirements include

[Contact Us](#)

### **CAN/CSA Standard Z271**

It is designed to provide guidance for individuals and organizations involved in the design, construction, installation, inspection, testing, maintenance, alteration, and repair of

[Contact Us](#)



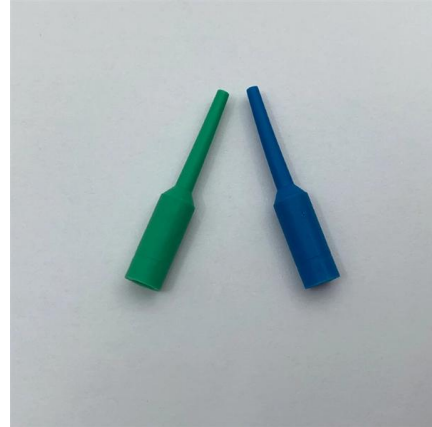
### **Working Clearances, based on the 2020 NEC**

NFPA 70E, Standard for Electrical Safety in the Workplace, provides guidance in determining the severity of potential exposure, planning safe work practices

[Contact Us](#)

### **Quality Control for Installation and Construction of Electrical Riser**

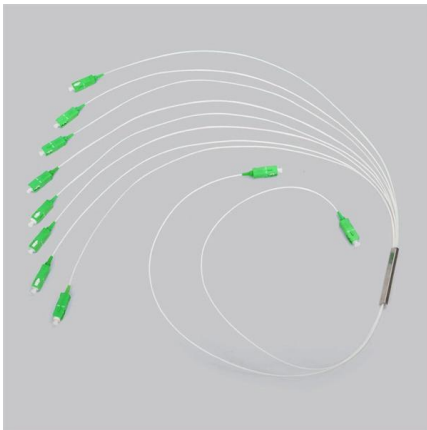
Master the key quality control methods for electrical riser & distribution box installation. Ensure safety, compliance, and prevent hazards in building electrical systems.



### **Suspended platform inspection checklist and safety**

Suspended platform inspection checklist and safety operation regulations. Suspended platform is high manned operation equipment, special

[Contact Us](#)



### **How To Maximize Worksite Safety When Using Power Distribution Boxes**

Power distribution boxes are designed to be rugged, durable, and dependable in even the most challenging situations and outdoor environments. Safety Standards for Temporary Power

[Contact Us](#)



### **Microsoft Word**

Continuity of the duct, screen or strip must be ensured at junction or distribution boxes. The link ensuring this continuity must be protected mechanically and against corrosion.

[Contact Us](#)





## Safety requirements of distribution box

The distribution box has the characteristics of small size, simple installation, special technical performance, fixed location, unique configuration function, not limited by

[Contact Us](#)



## Platforms

What should you not do? What should you do when working on a suspended platform? Make sure that the platform is installed and maintained according to job requirements, safety laws, standards, and

[Contact Us](#)

## Design requirements and standards for low voltage

You must make safety your top priority when working with low voltage distribution boxes. Design requirements help you follow important standards like

[Contact Us](#)



## EN 1808:2015 Safety Standards for Platforms , PDF

BS EN 1808:2015 is a British standard that sets safety requirements for

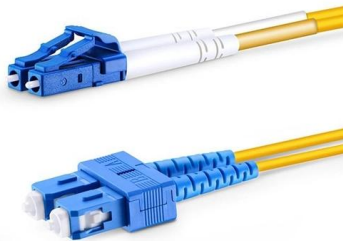
[Contact Us](#)



## Complete Guide to Rope Suspended Platform Parts:

Safety Standards for Rope Suspended Platform Parts To ensure international compliance and worker safety, parts must meet various standards

[Contact Us](#)



## Platforms

Do not allow electric cables or connections to lie in gutters or other areas where water can collect. Do not work near exposed electrical circuits or equipment. Do not join platforms unless they are

[Contact Us](#)

## Australian Distribution Boxes: Key Features and How E

Australia, with its diverse climate conditions and stringent safety regulations, demands high standards when it comes to electrical distribution

[Contact Us](#)



## Suspended Platform Safety Inspection RA

The document provides a risk assessment for inspection work using a suspended platform. It identifies hazards such as falls, falling materials, platform

[Contact Us](#)



## Microsoft Word

OSHA's electrical standards address the government's concern that electricity has long been recognized as a serious workplace hazard, exposing employees to such dangers as electric shock,

[Contact Us](#)



## eTool : Scaffolding

Because the platform is the work area of a suspended scaffold, an inspection requires safety checks of both the platform structure and how the platform is used

[Contact Us](#)

## Guidance Notes on the Inspection, Thorough Examination and

This Guidance Notes may be freely reproduced except for advertising, endorsement or commercial purpose. Please acknowledge the source as "Guidance Notes on the Inspection, Thorough

[Contact Us](#)



## Essential Safety Guidelines for Workers on Suspended

In conclusion, working on suspended platforms requires strict adherence to safety protocols in order to prevent serious injuries from falls.

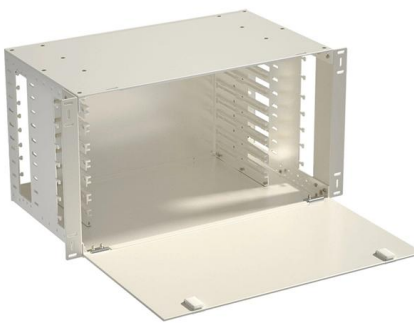
[Contact Us](#)



## PART 39, DESIGN SAFETY STANDARDS FOR ELECTRICAL

These rules cover design safety standards for electric utilization systems and include all electric equipment and installations used to provide electric power and light for employee workplaces.

[Contact Us](#)



### eTool : Scaffolding

Two-point adjustable suspension scaffolds, also known as swing-stage scaffolds, are perhaps the most common type of suspended scaffold. Hung by ropes or cables

[Contact Us](#)

### Safe Use and Operation of Suspended Working Platform

Ensure suspended platform safety with guidelines on inspection, operator training, fall protection, load limits, and emergency procedures for safe



[Contact Us](#)



### Safety code for suspended platforms , Standards Council of Canada

1.1 This Standard specifies requirements for the design, construction, installation, inspection, testing, maintenance, alteration, and repair of suspended platforms.

[Contact Us](#)

NFPA has an Electrical Section that provides particular opportunity for NFPA members interested in electrical safety to become better informed and to contribute to the development of the National

[Contact Us](#)



### Inspection And Test Of Suspended Scaffolds/Platform

B spection of suspended platform There is no abnormal wear, corrosion, surface cracks, loose connection and sealing off in hoister and the connecting place between hoister and suspended

[Contact Us](#)

### Daily Safety Inspection Checklist for Suspended Platforms

To ensure the safe operation of suspended platforms (commonly referred to as gondolas), it is essential to establish a

[Contact Us](#)



### Microsoft Word

The electrical system shall be designed for specified operating life of platform. Therefore equipment shall be specified by contractor for the design life considering maintenance requirement wherever applicable.

[Contact Us](#)



## Contact Us

---

For datasheets, pricing, or custom fiber access solutions, please visit:  
<https://frindel.es>