

Room Lighting Distribution Box Planning





Overview

This guide walks through a simple lighting layout process using room measurements, ceiling height, fixture spacing, lumen targets, circuit planning, and control zones, so you can map a room before buying fixtures or starting installation. Lighting distribution is a crucial aspect of architectural designs that can significantly transform any space. This guide reveals the fundamental principles of interior lighting layout, showing you exactly where to place lights for maximum comfort, functionality, and visual appeal in every room of your home. Here you can use our foot candle calculator and LED lighting layout calculator online to determine the optimal placement of your lights and ensure your space is properly illuminated. It takes into account room dimensions, fixture specs, and lighting goals to provide a scientifically sound layout. According to the IES Lighting Handbook, 10th Edition (the ANSI-accredited industry standard used by professional lighting designers), different rooms require different brightness levels measured in foot-candles (fc). Kitchens need 30–40 fc for safe food preparation, home offices need 30–50 fc for.



Room Lighting Distribution Box Planning



How to Choose a House Distribution Box , CHINT global

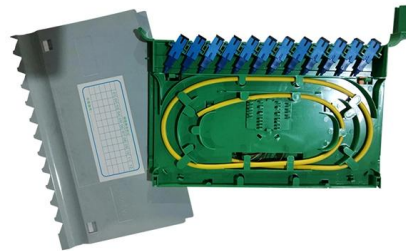
A well-chosen distribution box ensures the safety and efficiency of your household electrical system. This article guides you through selecting a

[Contact Us](#)

DIY Electrical, Lighting & Smart Home Planning Checklist

From outlet placement and lighting layers to switch logic and beginner-friendly smart home setups, this guide walks you through everything

[Contact Us](#)



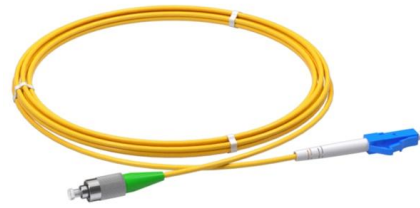
How To Distribute Lighting In A Room

To optimize your space, choose appropriate lighting distributions, such as direct lighting, indirect lighting, and floor lamps, to enhance task visibility and focus. Direct lighting should be used

[Contact Us](#)

Lighting Layout Tool , Keystone Technologies

Keystone's free tool instantly renders lighting layouts and helps you save time and the maximum amount of energy on your lighting project.



Lighting Guide: Plan Lighting for Every Room Easily

Learn how to plan lighting for every room -- from cozy bedrooms to bright kitchens. Includes clear tips, fixture heights, and lighting color temperatures.

[Contact Us](#)



How To Light A Room , Lighting Planning by Room at

Find tips on how to light a room with Lighting Planners at Lumens . We answer common questions to get lighting planning on track for each of your rooms.

[Contact Us](#)



High-Quality Electrical Lighting Distribution Boxes Explained

These versatile components are essential for ensuring safe and efficient operation of lighting installations in diverse settings, from street lighting to commercial buildings. In this comprehensive guide, we'll

[Contact Us](#)





7 key steps in lighting design process , EEP

Structured Design Process To achieve the best overall outcome in a lighting installation, it is important to avoid the tendency of rushing straight into

[Contact Us](#)



LED Lighting Layout Calculator: Spacing & Foot Candle

Our calculator helps plan shop lighting to highlight products effectively while maintaining an energy-efficient setup. These are just a few of the many use cases

[Contact Us](#)

Creating a lighting plan for the living room in 6 steps

Create a lighting plan for the living room in 6 steps: floor plan, connection points, activities, basic lighting, functional lighting and mood lighting.

[Contact Us](#)



Handbook PO-632

As with all new mail delivery planning, the location of the USPS-approved delivery equipment is subject to Postal Service approval. Delivery mode options for business parks are door, centralized, curbside,

[Contact Us](#)



How to Plan Lighting for Your Home (Room-by-Room Guide)

Plan your home lighting the right way with this step-by-step room-by-room guide. Learn layout, spacing, and how many lights each room needs.

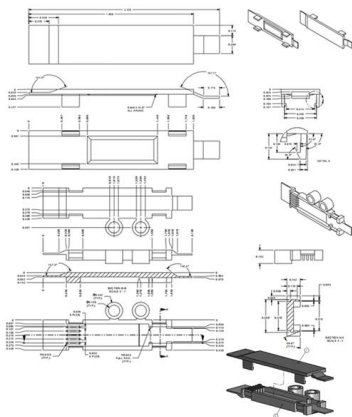
[Contact Us](#)



Interior Lighting Layout: Avoid Common Mistakes (2025)

Master interior lighting layout with our guide. Learn proper light placement, avoid harsh shadows, and create beautiful ambient lighting.

[Contact Us](#)



Essential Guide to Floor Plan Drawing Electrical Layouts

Creating a floor plan with electrical layouts involves several steps. First, start by sketching the overall layout of the rooms. Next, mark the locations of furniture and appliances to determine

[Contact Us](#)



How to Plan Your House's Lighting Scheme in 9 Simple

Choosing the right kinds of light fittings and where they will be located should never be a snap decision. The initial stages of planning a lighting scheme

[Contact Us](#)



Room wiring: a visual guide

Learn how to wire a room with a diagram, including electrical outlets, lights, and switches. Get step-by-step instructions to ensure a safe and efficient wiring

[Contact Us](#)



LED Commercial Lighting and Lighting Controls , Current

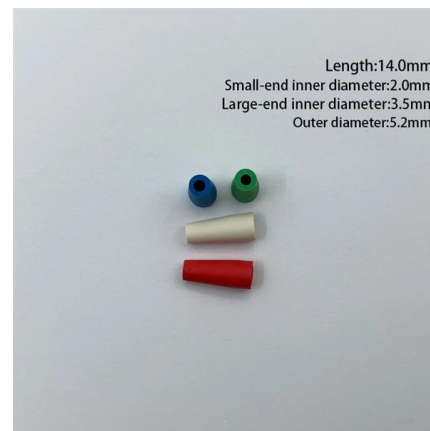
LED Commercial Lighting and Lighting Controls , Current - GLI Brands

[Contact Us](#)

How To Distribute Lighting In A Room

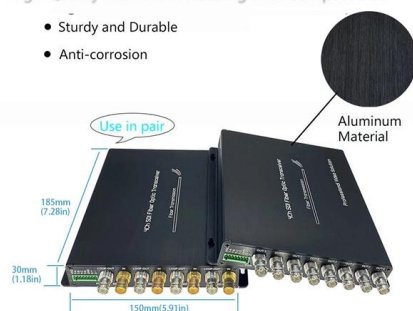
When planning recessed lighting for ambient lighting in a room, aim for one light for every 25 square feet to ensure even distribution. Start by measuring the room, but also consider whether

[Contact Us](#)



High Quality Aluminum Housing with Compact Size

- Sturdy and Durable
- Anti-corrosion



How to Draw an Electrical Floor Plan , RoomSketcher

How to Draw an Electrical Plan with RoomSketcher Creating an electrical floor plan is an important part of planning your space. It helps make

[Contact Us](#)



Creating a lighting plan in 7 steps + tips

Start with a detailed floor plan, determine the locations of outlets and switches, and choose the right basic, task and accent lighting for each

[Contact Us](#)



How to Plan a Lighting Layout: Spacing, Fixtures & Switches

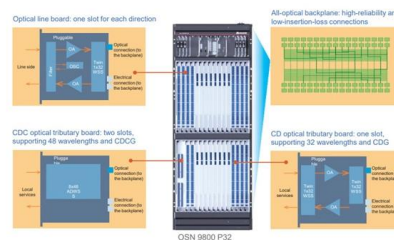
This guide walks through a simple lighting layout process using room measurements, ceiling height, fixture spacing, lumen targets, circuit planning, and control zones, so you can map a room before

[Contact Us](#)

The Complete Guide to Distribution Box: Installation, Types & More

Blog The Complete Guide to Distribution Box: Installation, Types & More By Admin Aug 2, 2025
No Comments # distribution box Introduction
Electrical systems power our homes, offices, and

[Contact Us](#)



Designing Lighting Systems for Substations and Control Rooms

In the context of designing lighting systems for substations and control rooms, professionals must not only master the art of drafting but also leverage the latest in business intelligence and data analytics.

[Contact Us](#)



Recessed Lighting Calculator -- How Many Lights Do I

Enter room dimensions, get an instant lighting layout with exact spacing and placement. Works for kitchens, living rooms, and vaulted ceilings.

[Contact Us](#)



Understanding Distribution Boxes: A Comprehensive Guide

A distribution box, also known as a power distribution box or electrical distribution box, is used to distribute electrical power safely to multiple

[Contact Us](#)

House Electrical Plan Drawing: 5 Steps

See how to draw electrical plans the easy way! Here's how to leverage modern software to design accurate electrical layouts fast & avoid costly

[Contact Us](#)



How to Correctly Place Your Lights

Recessed lighting placement formulas. Here are the formulas to calculate the placement of recessed lights, for General, Task, and Accent Lighting!

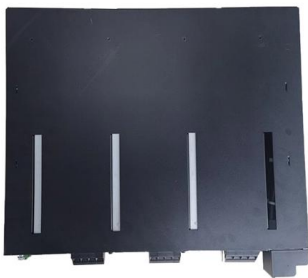
[Contact Us](#)



Room Automation Distribution Boxes for DALI & Building

Distribution boxes for room automation and DALI lighting control. Modular pluggable solutions for building automation and decentralized electrical installation.

[Contact Us](#)



Led Lighting Layout Calculator

The LED Lighting Layout Calculator is your go-to tool for intelligent lighting design. Whether you're planning a garage renovation, setting up an office space, or wiring a commercial facility, it eliminates

[Contact Us](#)

How to Plan a Lighting Layout: Spacing, Fixtures & Switches

Planning a lighting layout starts with three practical questions: how many lights the room needs, how far apart they should be, and where switches or dimmers should go. Get those decisions right first, and

[Contact Us](#)



Contact Us

For datasheets, pricing, or custom fiber access solutions, please visit:
<https://frindel.es>