

Requirements for sockets in power distribution boxes at large construction sites





Overview

Modern solutions rely on portable distribution boxes, industrial plug sockets, and IP67-rated connectors to ensure safe, flexible, and durable power systems. This article explores how temporary power systems work, key components involved, and how E-abel distribution boxes combined with industrial. This guidance is aimed at those responsible for planning and subsequent management, and those who control the installation and use of electrical systems and equipment on construction sites. Order this product from HSE Books It explains what to do to reduce the risk of accidents involving. One of the Standard's lesser known requirements is the use of interlocked mains voltage sockets at currents above 32A and those requirements still exist in BS 7375 and also in the Tunnelling Standard, BS 6164. The requirement for interlocked sockets at 63A and above stems from the risks associated.



Requirements for sockets in power distribution boxes at large construction sites

Electrical safety on construction sites

Revised guidance aligned to the health and safety when handling electrical devices on construction sites.

[Contact Us](#)



Requirements for distribution box at construction site

1? The manufacture and installation of distribution box and switch box shall meet the following requirements: 1. The distribution box shall be made of iron plate or other fire-proof insulating

[Contact Us](#)



Assemblies with Interlocked Socket Outlets for the

The attached images show various site distribution assemblies fitted with 63A and 125A mechanically interlocked 400V sockets. As you can see, we are able to

[Contact Us](#)

Power supply on the construction site

Power distribution on construction sites is a complex matter that requires careful planning and execution. The use of high quality cables, plug and socket connections and IP55 rated power distributors are



Electrical Safety Guidelines for Construction , PDF , Ac

The temporary electrical systems on constantly changing construction sites present challenges to safety. The document provides advice on planning electrical work,

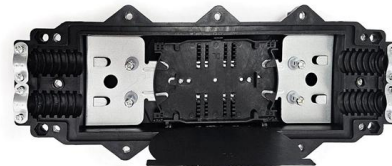
[Contact Us](#)



Industrial Socket Box Solution - Safe & Reliable Power

Our industrial socket box provides a safe, efficient, and durable power distribution solution for various industrial applications. Whether you need standard models or

[Contact Us](#)



Questions about Assemblies for Construction Sites

Are there any special requirements for power supplies for building and assembly sites? The supply of electrical systems and equipment on building and assembly sites may only take place from assigned

[Contact Us](#)



Construction site power distributors



Installation devices are only used from renowned manufacturers to ensure safe and stable operation. Every power distributor is wired up exclusively by professional electricians and subjected to a

[Contact Us](#)



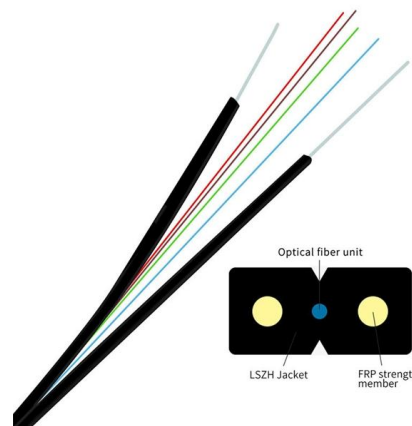
Distribution box Rubber Handy 6 Robust full rubber housing, impact resistant, oil-, UV- and acid resistant. Protected with a ground fault interrupter and circuit breaker. All protections covered by

[Contact Us](#)

Electrical practices -- construction and demolition sites

A cord extension set must not be joined so that the total length of any combination exceeds the relevant maximum value specified in table one. Note: Electrical

[Contact Us](#)



Industrial Socket Box Solution - Safe & Reliable Power

Our industrial socket box addresses these challenges by offering a robust, weatherproof, and customizable solution. Customer Requirements One of our

[Contact Us](#)

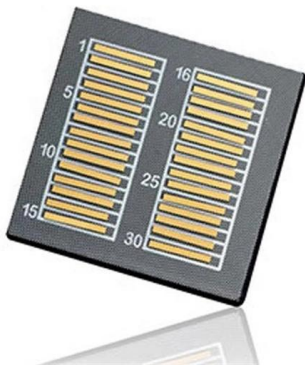




The installation requirements for the distribution box

A distribution box is the heart of any electrical system. It takes the incoming power and safely distributes it to different circuits throughout your

[Contact Us](#)



Temporary Electrical Supply HSE Procedure For

Below procedure will help you to establish a safe standard for the installation of temporary and permanent electrical fixtures/appliances on project sites.

[Contact Us](#)

Electrical Installations On Construction Sites

Practical guidance Electrical hazards are a major cause of death and serious injury on construction sites. This industry standard provides practical

[Contact Us](#)

STAINLESS STEEL WIRE MESH

- Long-lasting and durable
- Comprehensive specifications
- Customized non-standard products



ENERGYBOX Assemblies for Construction Sites (ACS)

ENERGYBOX is a complete range of Assemblies for Construction Sites (ACS) pre-wired boards that can be wall-mounted or installed on a support. The panels are

[Contact Us](#)





WALTHER-WERKE: Construction site power distributors

Full range of construction site power distributors
The full range comprises connection cabinets, connection distributors, main and group distributors, distributor and terminal distributor cabinets. The

[Contact Us](#)



ENERGYBOX Assemblies for Construction Sites (ACS)

We recommend to install these distribution boards in civil building sites, market areas, outdoor events, festivals and temporary electrical distribution.

[Contact Us](#)

IEC-60309 Plugs in Construction: Ensuring Safe Power Connections

In construction, ensuring safe and reliable electrical power is critical to the project's efficiency and safety. All electrical connections must meet stringent safety standards with the diverse equipment and

[Contact Us](#)



European standards for plugs and sockets

This standard specifies safety requirements for devices that are used for power distribution in domestic or industrial areas and on construction sites. It guarantees

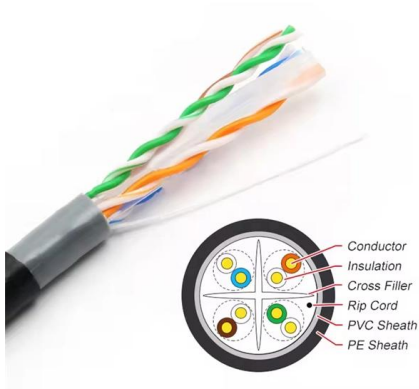
[Contact Us](#)



Safety requirements of distribution box

The distribution box has the characteristics of small size, simple installation, special technical performance, fixed location, unique configuration function, not limited by

[Contact Us](#)



Power Distribution Box, 110V Electricity Meter Electrical

Power Distribution Box, 110V Electricity Meter Electrical Box with NEMA 5-20 Power Outlet Pane, IP54 Electrical Breaker Socket Distribution Box for Construction

[Contact Us](#)

Temporary Power Construction Site Guide: Industrial Plug Sockets,

Discover how to supply temporary power safely on construction sites using E-abel distribution boxes, industrial plug sockets, and IP67 connectors for reliable outdoor electricity.

[Contact Us](#)



Selection Recommendations for Industrial Plugs,

Industrial plugs, sockets, and distribution boxes are specifically designed for power connections and electrical equipment control in industrial

[Contact Us](#)





Low voltage electrical supplies for equipment on construction sites

A range of supplies are permitted for socket-outlets and equipment on construction sites. This article summarises the requirements and recommendations for the use of low voltage supplies in such

[Contact Us](#)



Key Points Of Installation And Collocation Of Distribution Box In

1. The power distribution system at the construction site shall be distributed in different levels. The main distribution box (or distribution room) shall be set up. The distribution box shall be set

[Contact Us](#)

Contact Us

For datasheets, pricing, or custom fiber access solutions, please visit:
<https://frindel.es>