

Requirements for onshore electrical distribution boxes at the dock





Overview

The importance of electric power as an energy source for industries, buildings, and infrastructures is increasing steadily. Each business has specific needs and challenges and requires a versatile, adaptable.



Requirements for onshore electrical distribution boxes at the dock

DNV-OS-D201: Electrical Installations

Services required for normal operation of the offshore unit shall be operable with the emergency electrical power generation and distribution system being unavailable, unless such services are

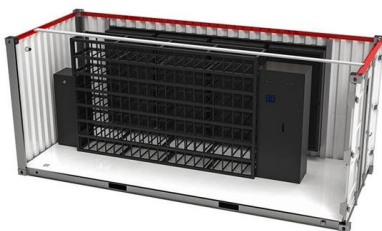
[Contact Us](#)



Private Boat Dock Electrical

Due to a disagreement with a dock builder and having to supply support for comments I included in a recent inspection report regarding electrical

[Contact Us](#)



IEC/IEEE 80005-1:2019

IEC/IEEE 80005-1:2019 describes high-voltage shore connection (HVSC) systems, onboard the ship and on shore, to supply the ship with electrical power from shore.

[Contact Us](#)

Wiley Online Library , Scientific research articles, journals, books

Hier sollte eine Beschreibung angezeigt werden, diese Seite lässt dies jedoch nicht zu.

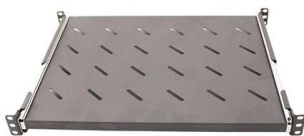
[Contact Us](#)



Part 10

Section 10.1 - General 10.1.1 Electrical equipment is to be designed to operate in a marine environment and the likely conditions pertaining to such an installation such as vibration, shock, temperature

[Contact Us](#)



PART 8

Section 8.1 - General 8.1.1 Electrical equipment shall be designed to operate in a marine environment and the likely conditions pertaining to such an installation such as vibration, shock, temperature

[Contact Us](#)



Shore Power - Cold Ironing & Dockside Power Solutions

Shore Power Solutions for Ports, Terminals, and Vessels Reduce emissions. Meet compliance. Power safely. Shore power, also known

[Contact Us](#)





Marina Shore Power Pedestals: What to Know

With more boaters expecting dependable access to electricity, outdated or undersized dock power systems can quickly become a liability. Smart

[Contact Us](#)



Guidelines on High Voltage Shore Connection Systems_Rev 01_July

1.2 These Guidelines are applicable to vessels equipped with a High Voltage Shore Connection System (HVSCS) or a Low Voltage Shore Connection System (LVSCS) designed to power the vessel with

[Contact Us](#)

Shore-Side Electricity

Onshore Power Supply (OPS), also commonly referred to as Alternate Marine Power (AMP) or Cold Ironing, represents an alternative power option for ships at berth which, by allowing onboard

[Contact Us](#)



Microsoft Word

1.2 Introduction 1.2.1 Conceptualization of a proper earthing philosophy for a specific type of power distribution system on board vessel or offshore installation, is essential for safe and reliable electrical

[Contact Us](#)

Beginner's Guide to Marinas, RV Parks, and



NEC Requirements

Power Pedestal: a secure, weatherproof, electrical enclosure for safe utility connection between the Marina and the vessel. Can offer electricity, water, internet, cable, phone, with additional features like

[Contact Us](#)



Guidelines on High Voltage Shore Connection Systems_Rev 01_July

This scenario of the application of onshore power supply is also known as alternative maritime power (AMP), cold ironing, shore-side electricity and shore power connection.

[Contact Us](#)

GEA34579A

GE's Shore Power solution enables a vessel to switch off auxiliary engines when at berth and plug into electric power from the port itself. This enables port owners and operators to improve the

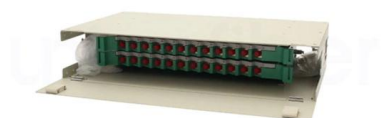
[Contact Us](#)



QUICK-REFERENCE GUIDE FOR DEVELOPMENT OF SHORE-SIDE ELECTRICITY

KEY DEFINITIONS OPS: Onshore Power Supply - the supply of electrical power to ships at berth, directly to the receiving ship, from a shore-side electrical power source, at a given voltage and

[Contact Us](#)

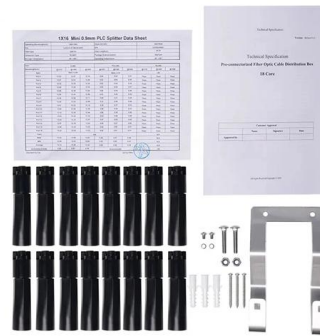




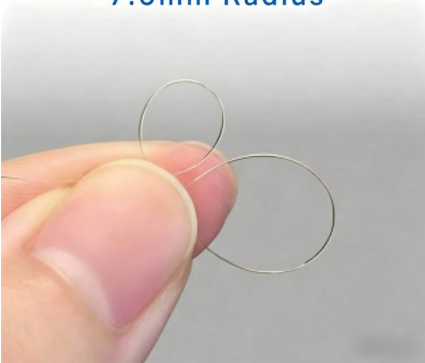
Dock Electrical Service

We recommend an annual inspection for your dock to make sure you meet Ameren and NEC code for the new season. Our service for this is \$125. We inspect the

[Contact Us](#)



7.5mm Radius



Ship Safety Standards

Accordingly, EMSA prepared this Guidance on shore-side electricity addressed to port authorities and administrations.

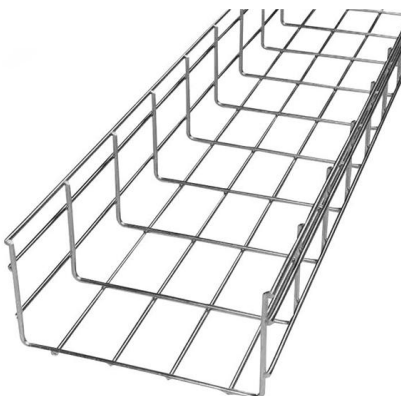
[Contact Us](#)

A new international Standard for utility connections in port

One of the key requirements is to ensure that the operating frequencies (Hz), phase rotation and voltages of the ship and shore electrical systems match. This is because ships operate in different



[Contact Us](#)



Safety Requirements for Boat Dock Wiring

Learn about the wiring codes and safety regulations for boat docks to ensure a safe and compliant electrical setup for your boating needs.

[Contact Us](#)



Marinas and Boatyards, based on the 2020 NEC

Requirements for boatyards and marinas are tighter because of increased attention to electrical shock drowning incidents. Article 555 begins with the concept of the

[Contact Us](#)



Shore Connection: Regulatory Developments and Best Practice in

delivers best practice regarding electrical shore connection of ships in port - shore power - and presents a number of practical examples of its introduction at container handling, ro-ro, and cruise

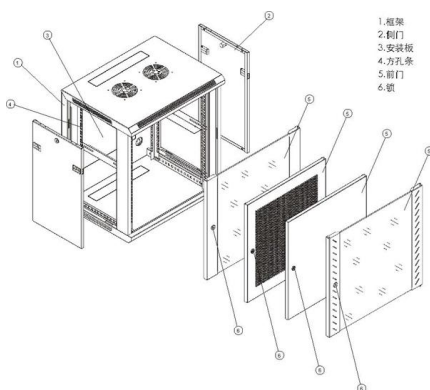
[Contact Us](#)

Port electrification solutions

Truly optimized electrical infrastructure requires deep knowledge about power distribution from system design to project execution. Such infrastructure plays an important role in successful terminal



[Contact Us](#)



Guidelines for earthing in maritime installations , EEP

For inspection and maintenance should direct earthing be limited to equipment in generators, transformers, switchboards and instrument rooms.

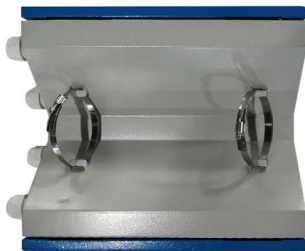
[Contact Us](#)

High Voltage Shore Connection Systems for Ships



Equipment Requirements 3.1 General 3.1.1
Electrical equipment are to be constructed of durable, flame-retardant, moisture-resistant material, which are not subject to deterioration in the marine

[Contact Us](#)



IEEE Recommended Practice for Electrical Installations on Shipboard

The recommendations for electrical power generation, distribution, and electric propulsion system design for use on shipboard are established by this document. These recommendations reflect the present

[Contact Us](#)

Contact Us

For datasheets, pricing, or custom fiber access solutions, please visit:
<https://frindel.es>