

# **Requirements for installing vertical cable trays**





## Overview

---

The 2026 NEC introduced an important update: cable trays must have at least 12 inches of clear vertical space above them to allow for installation and maintenance access. When completely installed, without damage either to conductors or structural system use maintain spacing or to keep cables in place when the tray is bent the minimum bend radius for cables as they exit the bottom of the cable tray. This publication is intended as a practical guide for the proper and safe\* installation of cable ladder systems, cable tray systems, channel support systems and associated supports. This is a description of how to select, install, and support these metal or plastic frames, on which electrical wires are installed.



## Requirements for installing vertical cable trays

---



### Standard for Installing Metal Cable Tray Systems

for installing electrical products and systems. NEIS are intended to be referenced in contract documents for electrical construction Metal cable tray systems for power communications cabling shall be

[Contact Us](#)



### Cable Tray Questions , Cable Tray Institute

That is, each cable tray rung would point in a vertical direction as opposed to the usual horizontal direction. The local electrical inspector has stated that he has no issues with this as long as the

### Cable Tray Spacing Standards for Installation and Safety

Discover the essential cable tray spacing requirements for safe and efficient installation. Learn key standards, horizontal and vertical spacing, and more.

[Contact Us](#)



### Codes and Standards , Cable Tray Institute

The Cable Tray Institute is making available the current edition of this practical guide for the proper installation of aluminum or steel cable tray systems. These guidelines will be useful to engineers,

[Contact Us](#)



### **Cable Tray Installation**

Cable tray systems must be installed as a complete unit, ensuring electrical continuity and support for cables. Each tray run should be finished before cable installation, and protective covers must be

[Contact Us](#)



### **A Guide to Installing and Supporting Electrical Cable Trays**

This guide covers the critical steps, from selecting the right electrical cable tray and performing accurate cable fill calculations to managing a safe cable pull through

[Contact Us](#)



### **Cable Tray Technical Guide A practical guide to product selection and**

This guide for engineers and installers has been developed by ABB as a practical reference regarding cable tray characteristics, installation, and requirements.

[Contact Us](#)





## INSTALLATION GUIDE

All tray items whether stored outside or indoors, should be placed on sufficient dunnage to enable future mechanical lifting. Trays and fittings should be stacked by their physical dimensions (width) and type.

[Contact Us](#)



### Safely Installing, Maintaining and Inspecting Cable Trays

The type and number of cable trays, and the support required to handle loads must take into account several factors, including, but not limited to, environmental or weather factors; the weight of the cable

[Contact Us](#)

### Safely Installing, Maintaining and Inspecting Cable Trays

Review the proper methods for safely installing, maintaining and inspecting electrical cable trays; Provide information regarding the hazards of overloaded cable trays;

[Contact Us](#)



### GENERAL INFORMATION

As demonstrated in the previous paragraph, Optical Cable Corporation's cable can be installed in vertical rises for great distances. However, due to the practical nature of installing cable, the weight

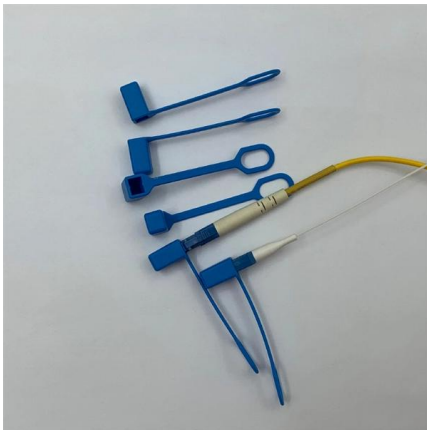
[Contact Us](#)



## Mastering Cable Tray Installation , Step-by-Step Guide for a Seamless

Conclusion Mastering cable tray installation is crucial for creating a safe, organised, and efficient cable management system. By following this step-by-step guide, you can ensure a seamless

[Contact Us](#)



## Cable Tray Installation Rules (NEC 392) - Electrical Trader

Core rules for selecting, installing, grounding, and filling cable trays--clearances, materials, separation, and bonding explained.

[Contact Us](#)

## Cable Tray Installation

Learn everything about cable tray installation with our complete guide. Discover types, steps, and safety tips for efficient electrical cable management.

[Contact Us](#)



## CABLE TRAY

When a separate EGC cable is installed in or on cable tray, it may be bonded to the cable tray with a grounding clamp. Ground clamp styles include bolted lug types that require drilling the cable tray side

[Contact Us](#)



## Cable Tray Systems: Requirements and Best Practices

Comprehensive guide to cable tray systems requirements: tray types, materials, loading, supports, bonding, routing, and best practices for safe electrical cable management.

[Contact Us](#)



## Cable Tray Spacing Standards for Installation and Safety

Key Factors Impacting Cable Tray Spacing  
Understanding cable tray spacing is key to meeting safety regulations and maintaining system

[Contact Us](#)



## Technical Guidelines for Cable Tray Installation and

Cable tray installation must comply with specific technical standards to ensure electrical safety, system reliability, and long-term maintainability. This document

[Contact Us](#)



## Best Practice Guide to Cable Ladder and Cable Tray Systems

These guidelines will be particularly useful for the design, specification, procurement, installation and maintenance of these systems. Cable ladder systems and cable tray systems are designed for use

[Contact Us](#)





## NEC Article 392 Guide: Ensuring Compliance for Cable

Master NEC Article 392 with our comprehensive guide. Learn essential cable tray requirements for installation, grounding, and fill capacity to

[Contact Us](#)



### What is a Vertical Cable Tray?

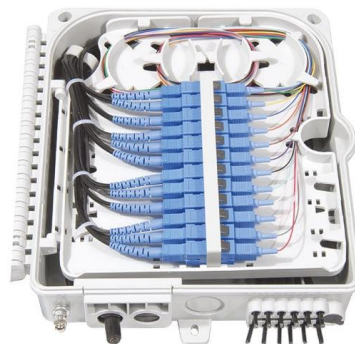
However, the vertical cable tray is an equally critical component that forms the backbone of any multi-story building or modern data center. But what

[Contact Us](#)

### Document DICOS

Attaching a channel cable tray by using the method illustrated in Figure 3-88 maintains the electrical requirements, and the bolted mechanical connection while providing a practical method for dropping

[Contact Us](#)



### IEC Standard for Cable Tray: Complete Technical Guide

The International Electrotechnical Commission (IEC) provides detailed guidelines for cable tray systems under IEC 61537. This standard outlines the

[Contact Us](#)



## **Cable Tray Technical Guide A practical guide to product selection and**

A practical guide to product selection and installation This guide for engineers and installers has been developed by ABB as a practical reference regarding cable tray characteristics, installation, and

[Contact Us](#)



## **Best Practice Guide to Cable Ladder and Cable Tray Systems**

Introduction This publication is intended as a practical guide for the proper and safe\* installation of cable ladder systems, cable tray systems, channel support systems and associated supports.

[Contact Us](#)

### **CABLE TRAY INSTALLATION PROCEDURE**

5. Cable tray installation shall preferably be installed flat in buildings or operating structures. Tray shall run as far as possible under flooring and walkways. Only in

[Contact Us](#)



## **Contact Us**

---

For datasheets, pricing, or custom fiber access solutions, please visit:  
<https://frindel.es>