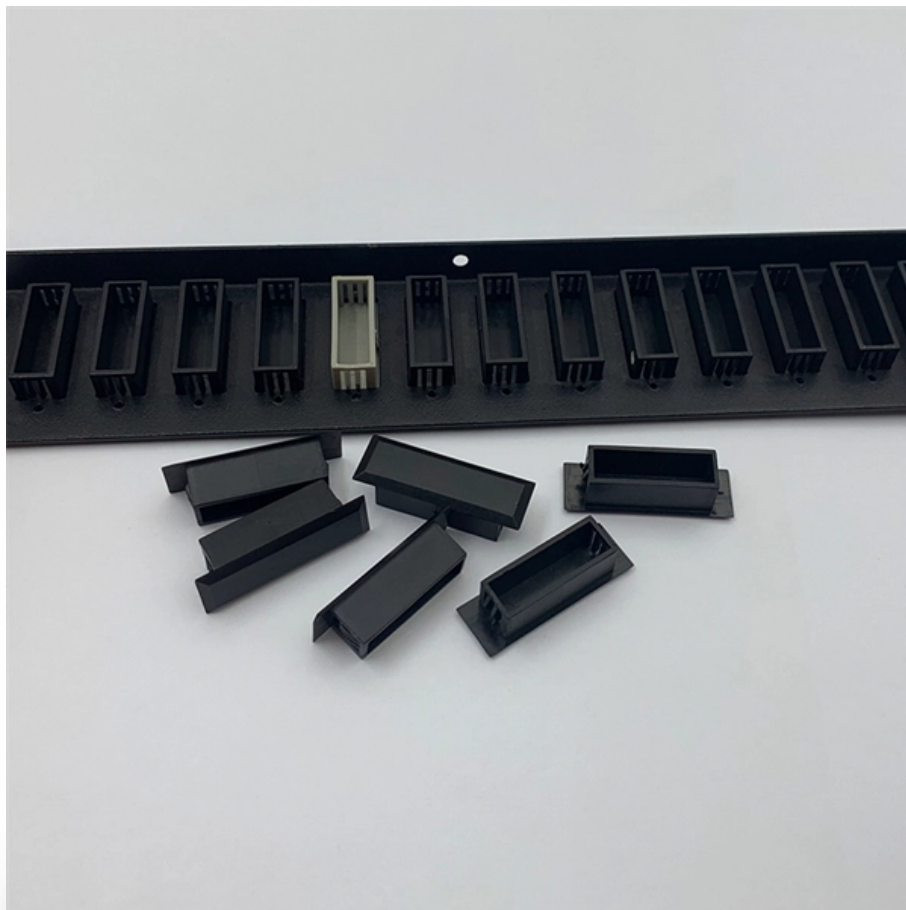


Requirements for cable tray connections in the computer room





Overview

Cable tray systems are recognized as a wiring method by many national and international electrical codes. Typical requirements address: Tray construction, load ratings, and materials. maintain spacing or to keep cables in place when the tray is ect the minimum bend ra-dius for cables as they exit the bottom of the cable tray. The mechanical and electrical characteristics, tests, certifications, overall quality management, recommendations mentioned in this technical guide only apply to our own cable management ranges and cannot under any circumstances be transposed to si osure, overheating or. Grounding is one of the most critical NEC considerations when installing metallic cable trays. All new cabling installations and wiring retrofits to existing cable requirements at the University of Alberta should follow the current EIA/TIA and CSA cabling standards.



Requirements for cable tray connections in the computer room



Precautions for Cable Tray Installation

Cable Tray Installation Guide The correct installation of cable trays is crucial for establishing a reliable and efficient cable system. It ensures that cables are

[Contact Us](#)

GUIDE CABLE TRAYS TECHNICAL

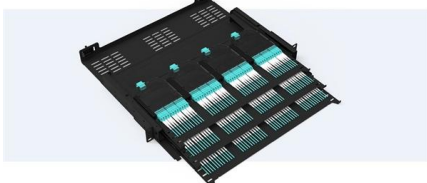
Specifies requirements for metal cable trays and associated fittings designed for use in accordance with the rules of Canadian Electrical Code, Part I and the National Electrical Code®

[Contact Us](#)



Pre-Terminated Patch Panel

Standard 19" width Max 144 fibers in 1U Ultra-High Density Ready



Dual-sail, easy install & maintain



Lightweight ABS MPO Cassette



Premium sheet metal with matte coating

Cable Tray Technical Guide A practical guide to product selection and

This guide for engineers and installers has been developed by ABB as a practical reference regarding cable tray characteristics, installation, and requirements.

[Contact Us](#)

NEC Article 392 Guide: Ensuring Compliance for Cable

Master NEC Article 392 with our comprehensive guide. Learn essential cable tray requirements for installation, grounding, and fill capacity to

[Contact Us](#)



Cable Tray Systems: Requirements and Best Practices

This article explains the main requirements and good practices for cable tray systems, including tray types, materials, loading, supports, bonding, cable selection, and installation details.

[Contact Us](#)



Mastering Cable Tray Installation , Step-by-Step Guide for a Seamless

Conclusion Mastering cable tray installation is crucial for creating a safe, organised, and efficient cable management system. By following this step-by-step guide, you can ensure a seamless

[Contact Us](#)



SECTION 270528 -- CABLE TRAY FOR TELECOMMUNICATIONS

Provide all materials and labor for the installation of a cable tray system for communications infrastructure. This section includes requirements for providing a cable tray system for

[Contact Us](#)





Technical Guidelines for Cable Tray Installation and

Cable tray installation must comply with specific technical standards to ensure electrical safety, system reliability, and long-term maintainability. This document

[Contact Us](#)



Cable Tray SHIB NAL

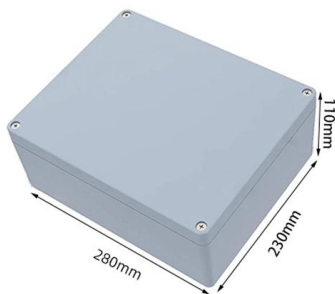
Cable trays are not raceways, but they are treated as a structural component of a facility's electrical system. Cable trays are a part of a planned cable management system to support, route, protect and

[Contact Us](#)

Cable Tray Questions , Cable Tray Institute

Question 8: Are there any requirements for separation and segregation of various types of cables (i.e. Power, instrumentation, signal, telecommunications, etc.) in cable tray systems?

[Contact Us](#)



2 0 0 5

INTRODUCTION The B-Line Cable Tray Manual was produced by B-Line's technical staff. B-Line has recognized the need for a complete cable tray reference source for electrical engineers and

[Contact Us](#)



Design Guidelines for Information Technology Infrastructure Facilities

Intrabuilding Backbone Cable - These cables are used to connect the Equipment Room to the respective Technology Rooms, primarily to carry signals to and from the edge and core

[Contact Us](#)



Technical Guidelines for Cable Tray Installation and

Joint Connections: Use dedicated splice plates and bolts. Ensure firm electrical continuity through grounding jumpers at each connection point. Sharp edges or

[Contact Us](#)

Cable Tray Technical Guide A practical guide to product selection and

Cable Tray Technical Guide A practical guide to product selection and installation This guide for engineers and installers has been developed by ABB as a practical reference regarding cable tray

[Contact Us](#)



Standards for Telecommunication Rooms , Information

The telecommunication room riser system consists of two (2) 100mm (4in.) conduits or sleeves. The sleeves with bushings should extend 25 to 76 mm (1 to 3 in.) All

[Contact Us](#)





Standards for Telecommunication Rooms , Information

Cable tray from hallways should extend into the telecommunications room and connect to a cable tray extending across the top of the equipment racks The

[Contact Us](#)



Installation Of Cable In Cable Trays: NEC, Safety

Installation of Cable in Cable Trays ensures proper routing, cable management, NEC compliance, grounding, fire safety, and load capacity.

[Contact Us](#)



Technical Specification for Cable tray installation and cable laying work

Approval of IPR shall be obtained for site preparation and marking the cable tray routes and locations of cable tray support before proceeding with the erection and installation work.

[Contact Us](#)

LoRawan outdoor base station

- * Industrial Internet gateway
- * Compatible with LoRaWAN network,
- * ClassA/B/C mode
- * Support 8/16 channel
- * Supports PoE power
- * supply and backup battery power supply
- * 10KV lightning protection



2026 Cable Tray Guide: Placement & Safety

This article provides a definitive technical checklist for cable tray placement and safety, grounded in ergonomic science and mechanical

[Contact Us](#)



Section 27 05 36 Cable Tray for Communications Systems

3.2.1 Cable trays shall be sized (including 10% growth) as per the drawings and will accommodate all horizontal and/or backbone cabling within the Telecommunications Room as well as entering/existing

[Contact Us](#)



NEC Standards for Cable Trays: Grounding, Fill Capacity

This article provides a comprehensive framework that governs various aspects of cable tray installations, including the types of cables that are deemed acceptable for use, requirements for

[Contact Us](#)

Complete cable tray manual for electrical engineers and

The final drawings for a cable tray wiring system may be completed and sent out for bid or construction more quickly than for a conduit wiring system. Cable trays

[Contact Us](#)



Data Centre Cable Management Systems (CMS)

Cable trays come in various sizes and configurations, including straight segments, splices, connectors, brackets, cable guides, and supports. This allows

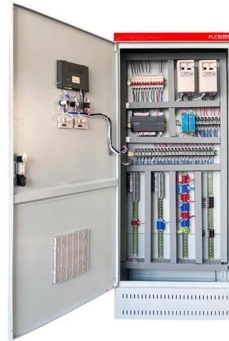
[Contact Us](#)



Telecommunication Room (TR) Requirements & Standards v3.2

The number of 4" or 102mm conduits required depends on the number of cables and size of tray. Use a 40% fill ratio to determine the number of 4" or 102mm conduits.

[Contact Us](#)



IDC computer room comprehensive wiring method

An IDC (Internet Data Center) computer room is a critical facility that requires a comprehensive wiring method to ensure the reliable and efficient operation of the network

[Contact Us](#)

Cable tray manual

INTRODUCTION The B-Line series Cable Tray Manual was produced by our technical staff. We recognize the need for a complete cable tray reference source for electrical engineers and designers.

[Contact Us](#)



Contact Us

For datasheets, pricing, or custom fiber access solutions, please visit:
<https://frindel.es>