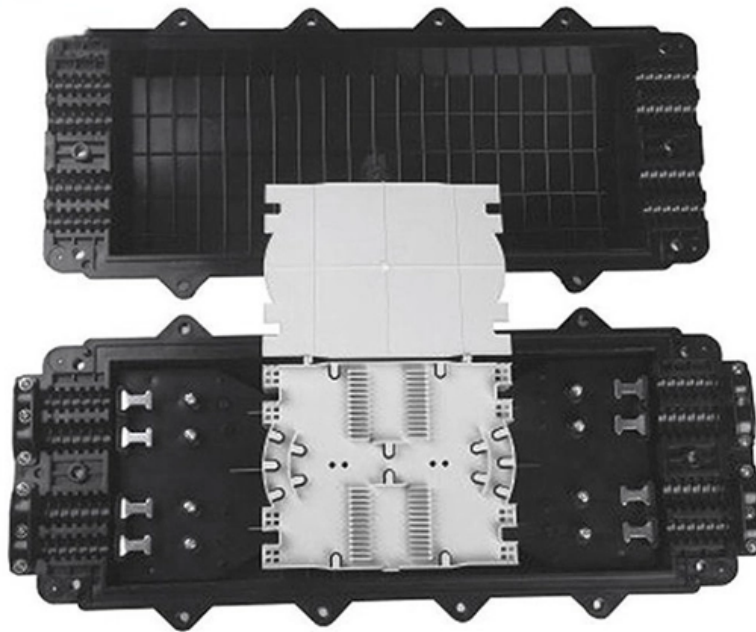


# **Requirements for Temporary Power Distribution Boxes at Level 3 Construction Sites**





## Overview

---

This fact sheet explains how to apply the requirements shown in AS/NZS 3012:2019 Electrical installations - construction and demolition sites (AS/NZS 3012:2019), which is called up as a mandatory standard by section 163 of the Work Health and Safety Regulation 2025 (WHS Regulation). However, exposure to weather, frequent relocation, rough use and other conditions not normally encountered with conventional wiring systems necessitate special consideration not required in other applications or in completed structures. A high baseline of quality and workmanship for installing electrical products and systems. NEIS® are intended to be referenced in contract documents. The Association assumes no obligation or liability to users of this publication. Guidance can be found in, Electricity at Work Regulations 1989, Guidance on Regulations (HSR25) Requirements for Electrical Installations BS 7671:2018 Section 704 of BS 7671 contains requirements for construction and demolition site installations. This article explores how temporary power systems work, key components involved, and how E-abel distribution boxes combined with industrial connector solutions provide efficient and secure power for construction projects.



## Requirements for Temporary Power Distribution Boxes at Level 3 Co

---



### Temporary Power Safety Solutions

While the requirements for safely distributing power at construction sites, street fairs, carnivals, convention centers, and the like attempt to mimic those for permanent

[Contact Us](#)

### Temporary Electrical Installations on Construction Sites

Temporary systems need to adhere to strict work regulations set out in the UK's BS 7671 code of practice. This ensures the safe distribution of electricity at the correct voltage for the job at

[Contact Us](#)



### Step-by-Step Guide: Temporary Construction Site Power

Looking for temporary power for your construction site? Let us walk you through the process to ensure you don't miss any important steps.

[Contact Us](#)



### Temporary Power For Construction Sites: Complete Guide

Temporary power for construction sites is necessary when looking to complete a project effectively. Here is a complete guide to help you navigate the process.



### Temporary electrical installations on construction and

All units for the distribution of electricity are to comply with BS 4363 Specification for distribution assemblies for RLV supplies on construction and

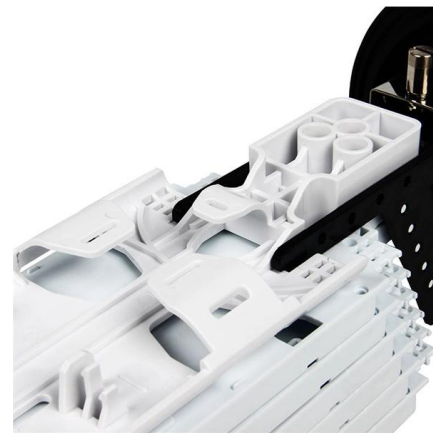
[Contact Us](#)



### Temporary Electric Power at Construction Sites

Temporary electric power installations at construction sites shall be installed and maintained in accordance with NECA 200-2016, Standard for Installing and Maintaining Temporary Electric Power

[Contact Us](#)



### Construction

Construction work requires electrical power for many purposes. However, exposure to weather, frequent relocation, rough use and other conditions not normally encountered with conventional wiring

[Contact Us](#)





## How to Make Temporary Power Safer on Construction

Learn how E-abel temporary power cabinets and industrial waterproof plug systems improve construction site electricity safety, reduce wiring errors,

[Contact Us](#)



## 1926.405

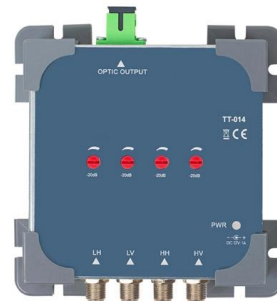
Electrical continuity of metal raceways and enclosures. Metal raceways, cable armor, and other metal enclosures for conductors shall be metallically joined together into a continuous electric conductor

[Contact Us](#)

## How to Get Temporary Power for Your Construction Site

Temporary power is a short-term or nonpermanent power structure. It's a safe and reliable electricity supply for tools, lights and facilities for the duration of a

[Contact Us](#)



## The Ultimate Guide to Temporary Power Distribution Boxes

Learn all about temporary power distribution boxes, their applications, advantages, and how to choose the right one for your needs.

[Contact Us](#)



### Construction Power Supply

Temporary electrical installations on construction sites must be designed, operated, and maintained in accordance with the applicable rules of technology. This includes suitable protective

[Contact Us](#)



### Temporary Power Regulations in Construction

Temporary Power Regulations in Construction  
This document discusses requirements for installing temporary power at construction sites according to

[Contact Us](#)



### Temporary Power Construction Site Guide: Industrial Plug Sockets,

Discover how to supply temporary power safely on construction sites using E-abel distribution boxes, industrial plug sockets, and IP67 connectors for reliable outdoor electricity.

[Contact Us](#)



### Temporary electrical wiring for construction sites

work requires electrical power for many purposes. However, exposure to weather, frequent relocation, rough use and other conditions not normally encountered with conventional wiring systems

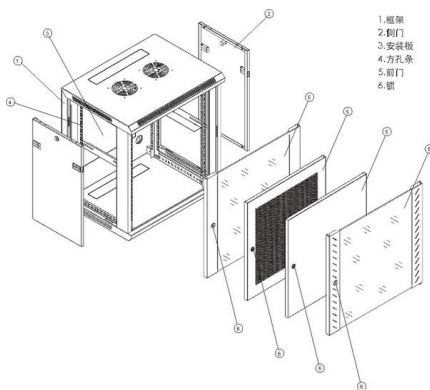
[Contact Us](#)

### Temporary electrical installations on



Temporary Electrical Supply Temporary supplies for construction sites often present challenges when the power requirements are estimated.

[Contact Us](#)



### A Guide to Temporary Power for Construction Sites

Start by calculating your temporary construction power requirements, which will require assessing the power needs of all your tools and machinery. Look at your

[Contact Us](#)

### Electrical practices -- construction and demolition sites

The standard sets out minimum requirements for the design, construction and testing of electrical installations that supply electricity to appliances and equipment on

[Contact Us](#)

### High-quality ceramic ferrule



### Temporary Electrical Installations on Construction Sites

An electrical installation on a construction site is there to provide lighting and power to enable the building works to be undertaken. Temporary services installations by their very nature are

[Contact Us](#)

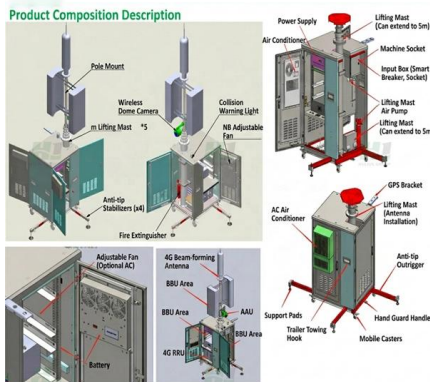
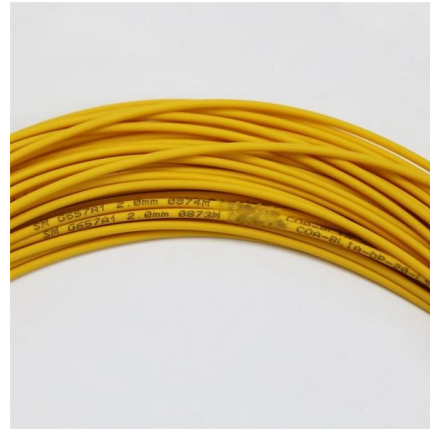
Product Parameter	
Product Type:	Cable tray, ladder, perforated and wire mesh cable tray
Material:	Q235 sheet, SPHC, SAA, 2024, Aluminum, 5052H32, FRP
Finish:	IG Electro gal, HSG, Powder coated, Electrolytic polishing
Width:	50-1000mm
Height:	20mm, 30mm, 40mm, 50mm, 100mm, 150mm or as your request
Thickness:	0.8-2.0mm (Standard-thickness, for wire mesh cable tray)
Length:	2m, 2.4m, 2.64m, 2.9m, 3m, 6m
Services:	ODM, OEM or Customized
Lead Time:	10 days for a 20' container, 14 days for a 40' container
Port of Loading:	Shanghai Port, Ningbo Port etc.

### Electrical practices -- construction and demolition sites



A cord extension set must not to be joined so that the total length of any combination exceeds the relevant maximum value specified in table one. Note: Electrical

[Contact Us](#)



## Temporary Electrical Supply HSE Procedure For

Below procedure will help you to establish a safe standard for the installation of temporary and permanent electrical fixtures/appliances on project sites.

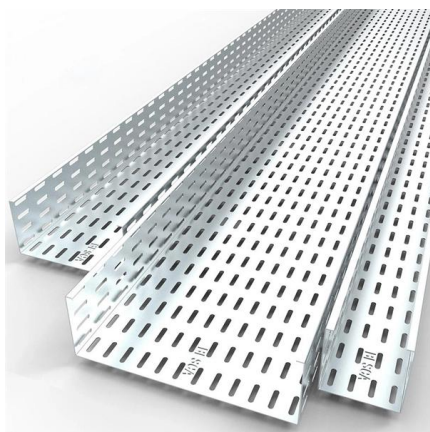
[Contact Us](#)

## Expert Guide: Select the Right Temporary Power Distribution Box

Expert Guide: Select the Right Temporary Power Distribution Box Workplace injuries from slips, trips, and falls make up 27% of all incidents, and messy wiring is often the culprit. Temporary power



[Contact Us](#)



## Essential Guidelines for Safe Temporary Electrical

This article aims to provide a comprehensive overview of the essential guidelines for safe temporary electrical installations on construction sites, focusing on Best

[Contact Us](#)



## Temporary Power Regulations in Construction

It reviews regulations around equipment approval, ground-fault protection, wiring methods, boxes and fittings, panelboards, lockout/tagout procedures, and

[Contact Us](#)



## Construction , Trystar

Trystar is your trusted partner for all your construction power needs. From temporary power distribution to custom power solutions, we have you covered!

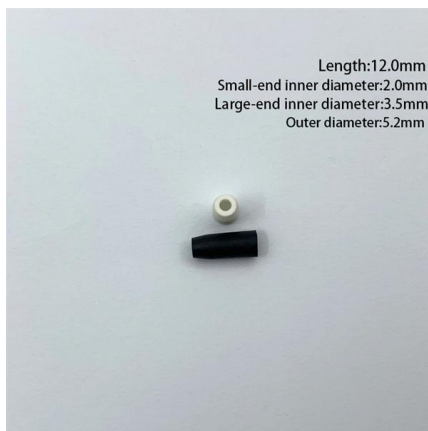
[Contact Us](#)



## ENERGYBOX Assemblies for Construction Sites (ACS)

The panels are made in a sturdy and handy two-component technopolymer cabinet with a fire-resistant backrest, which allows them to be stored and reused in the

[Contact Us](#)



## Building Construction Industry Guideline

Definitions For the purpose of this guideline: "Assembly for Construction Sites (ACS)" means switchboards complying with AS/NZS 3439.4 and the requirements of Clause 2.3.2, AS/NZS 3012.

[Contact Us](#)

## Temporary Electrical Installations for Construction Sites



Ensure safety on construction sites with our guide on Temporary Electrical Installations. Get practical tips and advice on implementing effective safety

[Contact Us](#)



## Contact Us

---

For datasheets, pricing, or custom fiber access solutions, please visit:  
<https://frindel.es>