

Requirements for Selecting a Three-Way Cable Tray



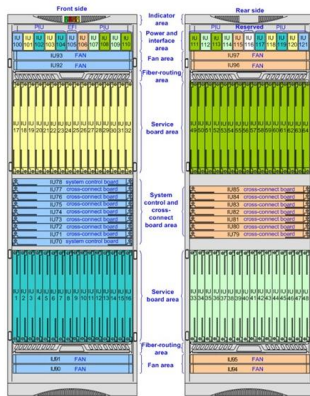


Overview

Cable tray systems are recognized as a wiring method by many national and international electrical codes. Typical requirements address: Tray construction, load ratings, and materials. The Cable Tray ng standards, performance standards, test standards and application in this document have been tested extens ompetent professional en completely installed, without damage either to conductors or. With our many years of experience, we are one of the leading manufacturers in this field. This publication is intended as a practical guide for the proper and safe* installation of cable ladder systems, cable tray systems, channel support systems and associated supports.



Requirements for Selecting a Three-Way Cable Tray



LEGRAND CABLE TRAYS TECHNICAL GUIDE

Specifies requirements for metal cable trays and associated fittings designed for use in accordance with the rules of Canadian Electrical Code, Part I and the National Electrical Code®

[Contact Us](#)

Cable Tray Sizing

Follow industry standards to select the appropriate cable tray dimensions. Avoid overloading and ensure proper spacing for heat dissipation. Conclusion: Choosing the Perfect Cable

[Contact Us](#)



Ultimate Guide to Cable Tray Selection - Types,

Learn how to choose the best cable tray system for your needs. Explore types, materials, installation tips, and NEC compliance in this expert guide.

[Contact Us](#)



A Guide to Installing and Supporting Electrical Cable Trays

A professional guide to installing electrical cable tray systems per NEC Article 392. Covers support, securing cables, and fill calculations.

[Contact Us](#)



A Guide to Selecting Cable Trays for Engineering Design

In this article, we will discuss the key factors involved in selecting cable trays, the principles to guide this selection, and the benefits of making the

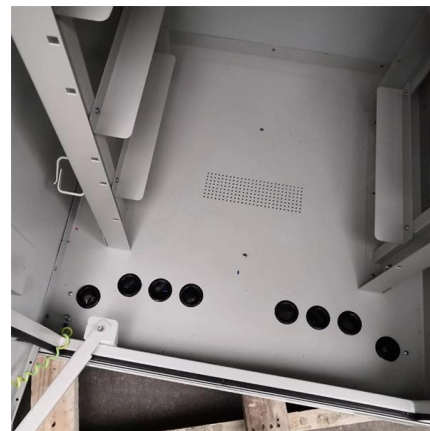
[Contact Us](#)



GUIDE CABLE TRAYS TECHNICAL

Specifies requirements for metal cable trays and associated fittings designed for use in accordance with the rules of Canadian Electrical Code, Part I and the National Electrical Code®

[Contact Us](#)



Selecting Cable Trays: A Complete Guide for Cable

Selecting cable trays can feel overwhelming, especially with so many options available. But don't worry--I've got you covered.

[Contact Us](#)





Guide to cable support systems

This chapter deals with the correct dimensioning and the final selection of a cable support system, depending on the application, according to various influencing factors, such as cable volume, cable

[Contact Us](#)



Cable Tray Sizing Calculator , IEC 61537 & NEC 392 Guide

Use this cable tray sizing calculator to check fill %, select tray size, and comply with IEC 61537 & NEC 392 with formulas, example and checklist.

[Contact Us](#)



How to Select the Right Electric Cable Tray for Your Application

How do I decide the right size for my electrical cable tray? To determine the load capacity for your electrical cable tray, calculate the total weight of all cables, including any potential future additions,

[Contact Us](#)



A Guide to Selecting Cable Trays for Engineering Design

Learn about the essential factors when selecting cable trays for engineering design. Understand load calculations, safety factors, material choice,

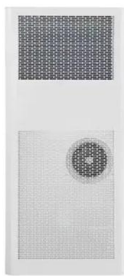
[Contact Us](#)



Installation Of Cable In Cable Trays: NEC, Safety

Cable installed in tray is subject to many of the same considerations as cable being installed in conduit systems. Correctly calculated data and adherence to the

[Contact Us](#)



Best Practice Guide to Cable Ladder and Cable Tray Systems

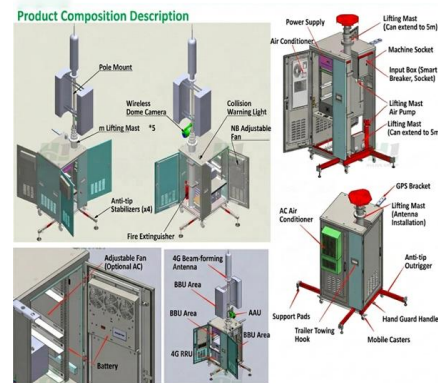
These guidelines will be particularly useful for the design, specification, procurement, installation and maintenance of these systems. Cable ladder systems and cable tray systems are designed for use

[Contact Us](#)

How to Select the Right Cable Tray for Your Project

Cable trays are integral support systems for the safe, efficient transport of electrical and communications wiring. Choosing the right cable tray can seem complex, but

[Contact Us](#)



Cable Tray Systems: Requirements and Best Practices

This article explains the main requirements and good practices for cable tray systems, including tray types, materials, loading, supports, bonding, cable selection, and installation details.

[Contact Us](#)



IEC Standard for Cable Tray: Complete Technical Guide

The International Electrotechnical Commission (IEC) provides detailed guidelines for cable tray systems under IEC 61537. This standard outlines the

[Contact Us](#)



Mastering Cable Tray Installation , Step-by-Step Guide for a Seamless

Conclusion Mastering cable tray installation is crucial for creating a safe, organised, and efficient cable management system. By following this step-by-step guide, you can ensure a seamless

[Contact Us](#)



Cable Tray Size Choosing: Key Factors for Electrical

However, selecting the ideal tray size requires a thorough understanding of various factors, including cable types, quantities, specifications,

[Contact Us](#)



The Ultimate Guide to Selecting the Right Cable Tray for

Project Assessment: Begin by assessing the specific requirements of your project, including the type of cables, environmental conditions, and load capacity Material

[Contact Us](#)





Best Practice Guide to Cable Ladder and Cable Tray Systems

Cable ladder systems and cable tray systems are designed for use as supports for cables and not as enclosures giving full mechanical protection. They are not intended to be used as ladders, walk ways

[Contact Us](#)



Cable Tray Technical Guide A practical guide to product selection and

This guide for engineers and installers has been developed by ABB as a practical reference regarding cable tray characteristics, installation, and requirements.

[Contact Us](#)

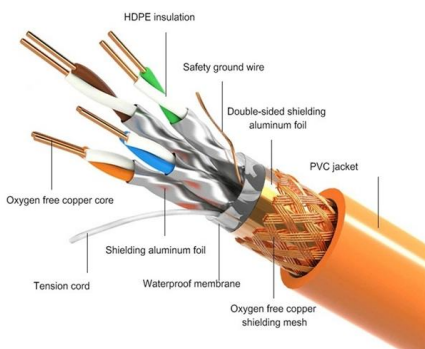
Cable Tray Technical Guide A practical guide to product selection and

Cable Tray Technical Guide A practical guide to product selection and installation This guide for engineers and installers has been developed by ABB as a practical reference regarding cable tray

[Contact Us](#)



PRODUCT DETAILS



NEMA and NEC Regulations for Cable Tray Requirements

Follow installation practices to meet cable tray requirements, ensuring proper support, routing, and compliance with safety regulations.

[Contact Us](#)



Contact Us

For datasheets, pricing, or custom fiber access solutions, please visit:
<https://frindel.es>