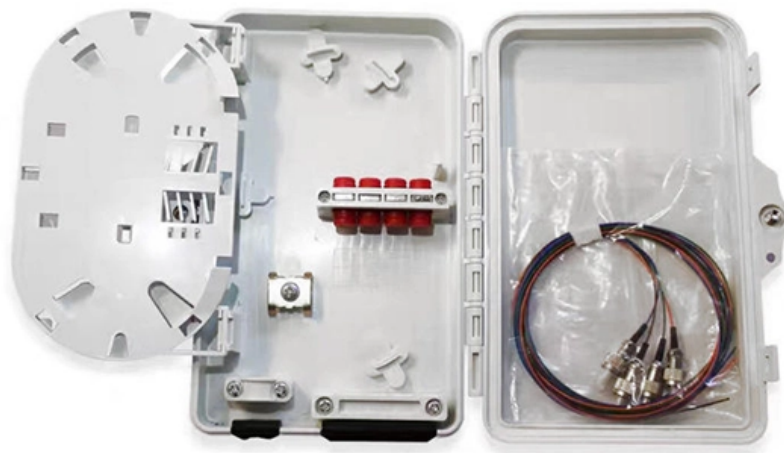


Requirements for Customized Labeling of Distribution Box Switches





Overview

This section specifies the type of labeling information required and includes available incident energy and personal protective equipment (PPE) categories. These requirements are echoed in NFPA 70-2017: National Electrical Code (NEC), Article 110. Section 514, entitled 'Identification and Notices', provides clear instruction, with label illustrations, that are supported by UK health and safety law. A correctly labelled installation looks more professional and helps to comply with these Regulations, while the customer benefits from easy. There is requirements for items such as circuit breakers, switches (as in branch circuit/feeder circuit switches) and similar to identify what they supply, but is not usually necessary if arranged so that the purpose is evident. The Ontario Electrical Safety Code (OESC) also requires high voltage systems with the possibility of feedback to have updated single-line diagrams — both at the time of installation and after any modifications (labelling directly impacts safety.



Requirements for Customized Labeling of Distribution Box Switches



Technical Requirements for Distribution Box in Electrical Industry

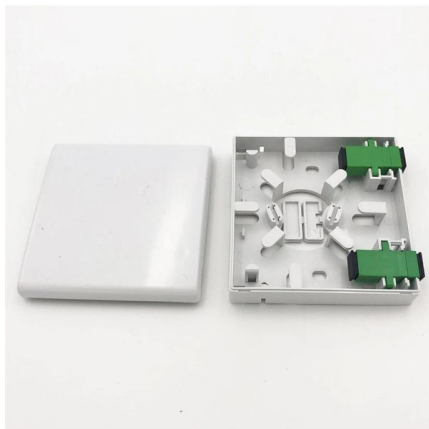
16. The distribution box system drawings are shown in the attached drawings. The above is the technical requirements of distribution box. On the premise of ensuring safety, the distribution box is still

[Contact Us](#)

NEC Changes Part I: Required on Electrical Disconnect

ID of Disconnect Means in the 2020 NEC describes marking panels to include circuit source. Label should clearly state purpose of disconnect means.

[Contact Us](#)



The Ins and Outs of Electrical Labeling -- Part 1 of 2

In Part 2, we will examine the labeling requirements of breakers and disconnects as well as the path out to industrial control panels and industrial

[Contact Us](#)

Circuit Numbering and Labeling for Electrical Equipment

This standard describes requirements for numbering and labeling of real property electrical distribution equipment, circuits, and site lighting at Lawrence Livermore National Laboratory.



Strategies for electrical labeling and documentation

Understand codes, standards, and requirements for labeling and signage. Learn best practices for documenting and labeling electrical equipment. Offer solutions and tips for electrical

[Contact Us](#)



Labelling of mains and apparatus

Labelling Materials, Fixing and Positioning, Principles These sections provide the requirements concerning the physical application and location of labels and the working principles applying to

[Contact Us](#)



Electrical Panel Labeling Standards: Easy Guide

Electrical panel labeling standards come from many regulatory agencies, so it's important to learn about the specific requirements that apply to your workplace.

[Contact Us](#)





Discover Electrical Labeling Standards for OSHA

Improve electrical safety with proper electrical labeling techniques that meet OSHA and NEC requirements.

[Contact Us](#)



Getting important labelling right leaves a lasting impression

Section 514*, entitled 'Identification and Notices', provides clear instruction, with label illustrations, that are supported by UK Health and Safety Law. A correctly labelled

[Contact Us](#)

Re: Marking of Electrical Equipment

Electrical Equipment Did You Know? Proper labelling at all distribution points, circuit breakers, fuses and switches is required during installation, as well as whenever .

[Contact Us](#)



Distribution switchboards

Distribution switchboards, including the Main LV Switchboard (MLVS), are critical to the dependability of an electrical installation. They must comply with well-defined standards governing

[Contact Us](#)



Case Study-How to Customize a Distribution Box for

In electrical projects, customers can customize their distribution box according to the box size, color, application needs, use scenarios, electrical

[Contact Us](#)



Electrical Panel Labels and How to Mark Them , Family

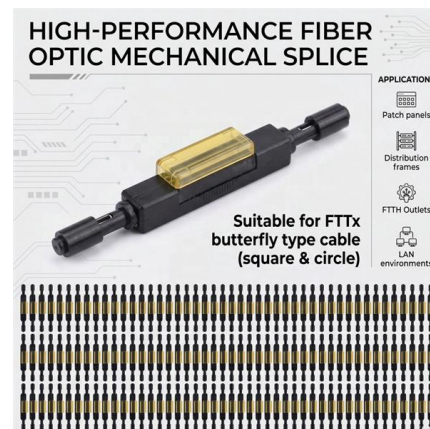
And don't create personal labels such as "Mary's Bedroom" that will have no meaning to the next family that owns the home. Always check with your

[Contact Us](#)

Switchboard labels explained - What must be included?

Switchboard labels and electrical standards are the keys to safety and reliability in electrical systems. Labels provide information about the specifications and safety features of a

[Contact Us](#)



Electrical Equipment Labeling: Safety Guide , Highland

Standardized color codes, formats, and terminology on labels improves clarity across the facility's electrical infrastructure. With every piece of

[Contact Us](#)



Requirements in Labeling Switches and Circuit Breakers

Such detailed labeling practices can significantly aid in maintenance, troubleshooting, and future modifications to the electrical system, enhancing both

[Contact Us](#)



Requirements for labels in electrical equipments.

There is requirements for items such as circuit breakers, switches (as in branch circuit/feeder circuit switches) and similar to identify what they supply, but is not usually necessary if

[Contact Us](#)

Electrical Warning Labels & Labelling

Quick overview of some common electrical warning signs and labels that you might find attached to electrical equipment.

[Contact Us](#)



The installation requirements for the distribution box

Learn how to install a distribution box safely and correctly. Covers wiring, placement, standards, and expert tips for a compliant setup.

[Contact Us](#)

How to Read and Interpret Your



Distribution Box Labels

Understand your distribution box labels to identify circuits, improve safety, and troubleshoot electrical issues in your home with confidence.

[Contact Us](#)



What are the Requirements for Electrical Panel Labeling?

Of course, you will also want to reference any local agencies that may have specific requirements for your area. The labels that are required for electrical boxes will usually focus on two things. The first is

[Contact Us](#)



COMPLIANCE GUIDELINES FOR MARKING AND LABELING

COMPLIANCE GUIDELINES FOR MARKING AND LABELING SYSTEMS Most electrical products and equipment are required to be marked with specific safety-related information and meet permanency

[Contact Us](#)



Requirements in Labeling Switches and Circuit Breakers

Here's a breakdown of the requirements according to the revisions of this article: Location of Labels: Labels must be placed at each switch or circuit

[Contact Us](#)



Distribution Box: Types and Functions , Axis-Electricals

Components of a Distribution Box: The basic structure and technical aspects of electrical distribution boards vary according to places and requirements. A typical

[Contact Us](#)



Wiring regulations: what are the labelling requirements?

In fact, it is so important that an entire section of the Wiring Regulations is dedicated to it. Section 514, entitled 'Identification and Notices', provides clear

[Contact Us](#)

Electrical

Subclassification labels for all emergency power system equipment as listed for equipment identification labels, and all junction and pull boxes. Fire Alarm equipment per the Fire Alarm specification

[Contact Us](#)



Labeling of Electrical Areas and Equipment - Method

In addition to warning labels, specific electrical equipment identification labels must be provided on various electrical equipment types. These labels should include

[Contact Us](#)



Requirements in Labeling Switches and Circuit Breakers

The updates to Article 408.4 (A) in the 2023 National Electrical Code (NEC) aim to enhance clarity, safety, and efficiency in the labeling of electrical

[Contact Us](#)



Contact Us

For datasheets, pricing, or custom fiber access solutions, please visit:
<https://frindel.es>