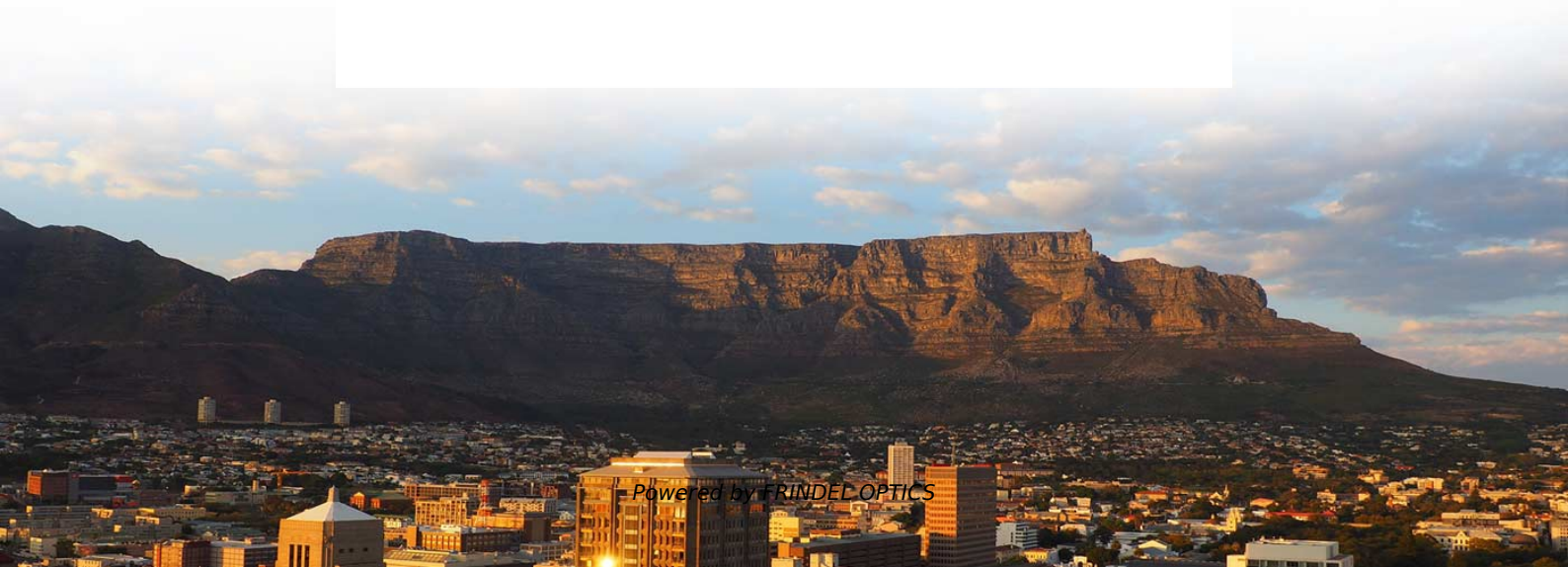
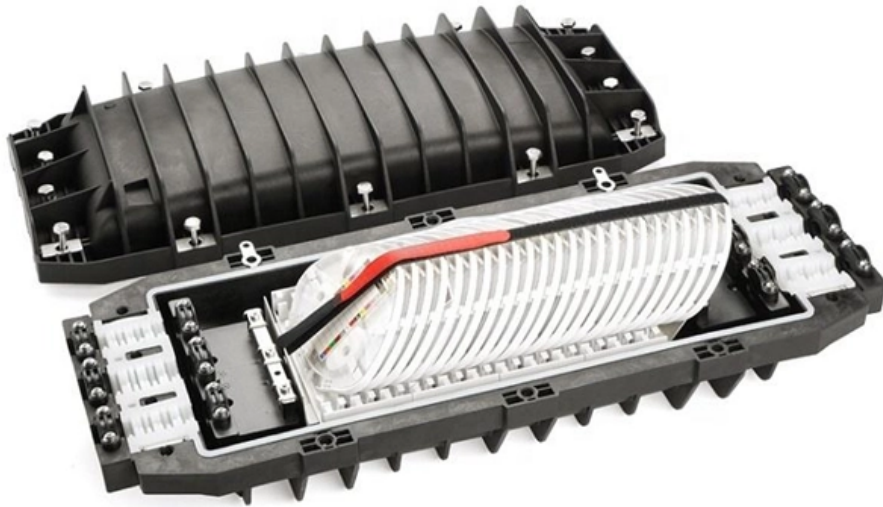


Remote Monitoring Procurement of ESCON Connectors from France





Remote Monitoring Procurement of ESCON Connectors from France



Applications & Best Practices , Optica Technologies Inc.

Optica Remote AccessEscon Director ReplacementDistance SupportChannel-To-Channel SupportPrizm is the ideal solution to support ESCON device extension by taking full advantage of the inherent distance benefits of FICON. Whether your remote ESCON devices are across campus or require wide area connectivity across virtually unlimited distances, Prizm helps mainframe users replace their aging ESCON infrastructures with a distance insensiti See more on opticatech Grand View Research

France Remote Monitoring And Control Market Size & Outlook

This country databook contains high-level insights into France remote monitoring and control market from 2018 to 2030, including revenue numbers, major trends, and company profiles.

[Contact Us](#)

Top 100 Remote Monitoring Companies in France (2026) , ensun

In the Remote Monitoring industry in France, several key considerations are essential for anyone researching companies in this field. Regulatory compliance is crucial, as France has stringent data

[Contact Us](#)



Enterprise System Connectivity (ESCON) channel

In order to accommodate parallel channel-attached control units and devices, the ESCON



conversion mode allows communication from an ESCON channel to parallel channel-attached control units. The

[Contact Us](#)

France Tenders , RFP, Bids, eProcurement , France Government

This is a comprehensive database of all tenders and contracts issued by government departments, local authorities and other public entities in France. The database is updated on a daily basis to ensure

[Contact Us](#)



Enterprise Systems Connection

Enterprise Systems Connection (ESCON) is a crucial technology term primarily because it refers to a data transfer interface used in mainframe systems. Initially developed by IBM, it is

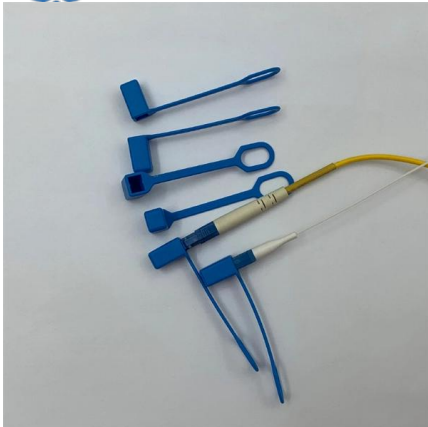
[Contact Us](#)

ESCON2 Micro 60/5 Hardware Reference

The ESCON2 Micro 60/5 is considered as partly completed machinery according to EU Directive 2006/42/EC, Article 2, Clause (g) and are intended to be incorporated into or assembled with other

[Contact Us](#)





zVT Mainframe Virtual Tape Products , Optica Technologies Inc.

Prizm allows you to protect your large investments in stable, business critical ESCON and parallel devices and applications, and provides a means to seamlessly connect those devices to FICON

[Contact Us](#)

ESCON2 Communication Guide

It includes performance data, specifications, standards information, connection details, pin assignments, and wiring examples. The overview below shows the documentation hierarchy and how its parts are

[Contact Us](#)



ESCON and FICON CTC

About this publication This publication describes the Enterprise Systems Connection (ESCON™) Channel-to-Channel adapter and the Fibre Connection (FICON™) Channel-to-Channel adapter. A

[Contact Us](#)

ESCON

Startup and parameterization are performed using the intuitive graphical user interface ESCON Studio with the help of simple to use, menu-guided wizards. The following wizards are available Startup,

[Contact Us](#)

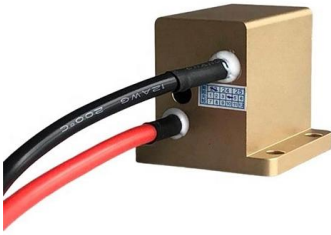




ESCON 70/10 Hardware Reference

The ESCON 70/10 is considered as partly completed machinery according to EU Directive 2006/42/EC, Article 2, Clause (g) and is intended to be incorporated into or assembled with other machinery or

[Contact Us](#)



CONNECTORS & ADAPTORS

The connector system is a Retractable Shroud Duplex (RSD) and can be supplied as terminated patchcords or pigtails. Hybrid patchcords, terminated one end with an ESCON connector and the

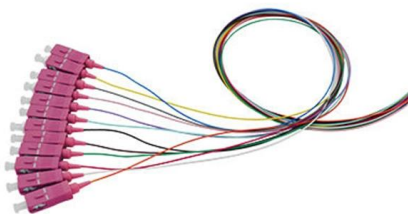
[Contact Us](#)



ESCON host adapters and cables

Each ESCON host adapter port requires a 62.5-micron multimode fiber-optic ESCON cable to connect the ports to a server or fabric port. These cables have a small form factor, industry standard MT-RJ

[Contact Us](#)



ESCON

ESCON (Enterprise Systems Connection) is a data connection created by IBM, and is commonly used to connect their mainframe computers to peripheral devices such as disk storage,

[Contact Us](#)





ESCON Fiber Patch Cable

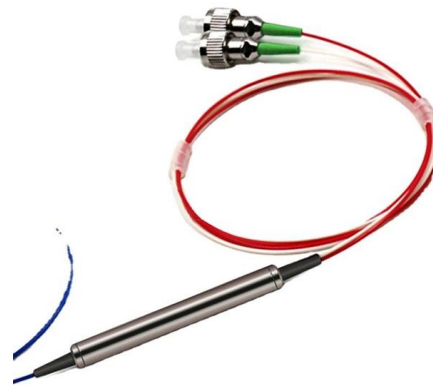
The cable is born a duplex type. The feature of ESCON connector is that it has a shock proof plastic housing with a retractable shroud to protect the ceramic ferrules inside the connectors; ESCON is a

[Contact Us](#)

France Remote Power Generation Monitoring Intelligent Procurement

The France Remote Power Generation Monitoring Market is divided by product type, application area, end-use industry and region. The product Moderna range ranges from basic options to modern high

[Contact Us](#)



France Remote Monitoring and Control Market (2023)

France Remote Monitoring and Control Market is expected to grow during 2023-2028

[Contact Us](#)

What is ESCON? , Webopedia

Short for Enterprise Systems Connection, or Enterprise Systems Connectivity, an IBM fiber optic connection technology that interconnects S/390 mainframe computers, workstations and

[Contact Us](#)





FICON (Fibre Connection Channel): 15 Years of Mainframe I/O

In 1998, IBM introduced FICON channels for enhanced I/O connectivity and performance for their 9672 G5 processors, delivering significant capability when compared to its predecessor, ESCON. Let's not

[Contact Us](#)



France Remote Monitoring Equipment Market Opportunities

The France Remote Monitoring Equipment Market demonstrates strong regional diversity, with demand patterns shaped by economic activity, industrial hubs, and consumer behavior. Île-de

[Contact Us](#)

ESCON2 Feature Chart

ESCON2 Feature Chart The ESCON2 line of products from maxon are small, powerful 4-quadrant PWM servo controllers. Their high power density allows flexible use for brushed DC motors and brushless

[Contact Us](#)



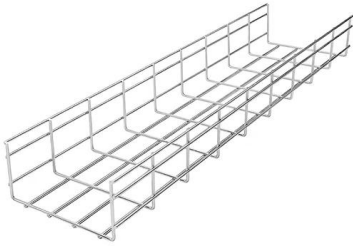
France Remote Monitoring Market Adoption, Workflow Scale

Regulatory frameworks and legal standards significantly influence the deployment and scalability of remote monitoring solutions within France.

[Contact Us](#)



ESCON and FICON CTC



If the CTC connection is either point-to-point or through an ESCON Director static connection, the LINK keyword in the CNTLUNIT statement is optional. If you do code it and the CNTLUNIT statement is

[Contact Us](#)

About: ESCON

ESCON (Enterprise Systems Connection) is a data connection created by IBM, and is commonly used to connect their mainframe computers to peripheral devices such as disk storage, tape drives and

[Contact Us](#)



Contact Us

For datasheets, pricing, or custom fiber access solutions, please visit:
<https://frindel.es>