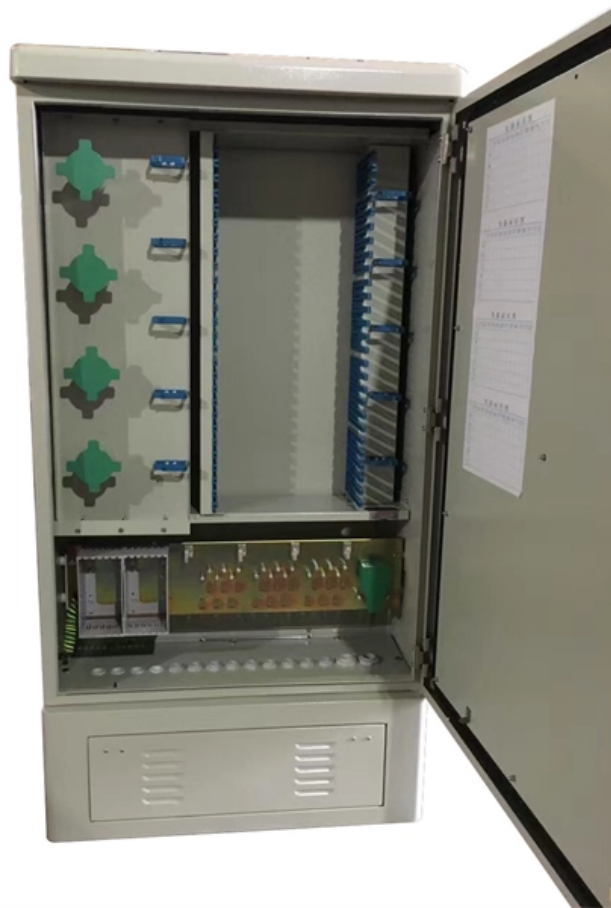


Relay protection sensitivity and selectivity





Relay protection sensitivity and selectivity



Distribution Automation Handbook

The selectivity diagram is a set of specific time/current curves which shows all the time/current curves, that is, the operating characteristics of the relays of the concerned chain of protection relays.

[Contact Us](#)

Distribution Automation Handbook

The measuring principle ensures that the relay operates exclusively on faults inside the area of protection, which means that the protection is absolutely selective.

[Contact Us](#)



Protective Relaying Philosophy and Design Guidelines

To accomplish the design objectives, four criteria for protection should be considered: fault clearing time; selectivity; sensitivity and reliability (dependability and security).

[Contact Us](#)

ASSESSING THE SENSITIVITY OF RELAY PROTECTION

An assessment of sensitivity of the measuring elements of relay protection was performed. Based on simple examples of the generator-transformer unit protection from symmetrical short circuits, it was



Philosophy of a good relay protection settings for machines and

Relay protection objectives The objectives of the protection system are: to limit damage to people and to the plant, permit different service conditions, guarantee maximum service continuity for

[Contact Us](#)



Protective Relays and Their Functional Characteristics

To provide effective and reliable protection to the power system, a protective relay must have the following essential functional characteristics: Selective, Fast, Stable, Reliability, Sensitivity,

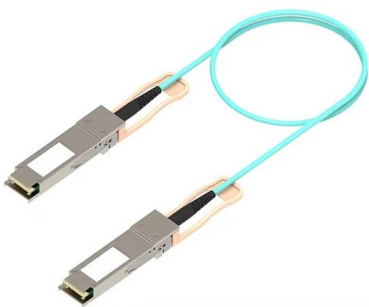
[Contact Us](#)



The Role of Protection Relays in Power Systems and an

Protective relays are critical in power systems because they serve as decision-making devices that ensure the safe operation of power grid. They play a key role in power system protection.

[Contact Us](#)





Maximizing Line Protection Reliability, Speed, and Sensitivity

Originally presented at the 42nd Annual Western Protective Relay Conference, October 2015, under the title "Maximizing Line Protection Reliability, Speed, and Security"

[Contact Us](#)



Protective Relay Decisions In Electrical Protection Systems

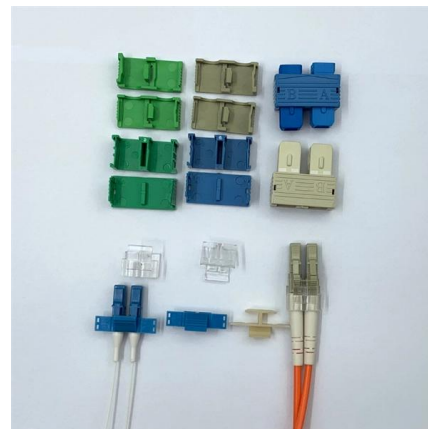
A Protective relay determines when and how electrical faults are isolated, shaping coordination, selectivity, and system stability during abnormal conditions.

[Contact Us](#)

Practical handbook-for-relay-protection-engineers , PDF

The handbook for protection engineers includes guidelines on protective circuitry, protective relay principles, and testing procedures for switchgear and relays. It

[Contact Us](#)



Lecture 4 , PDF

This document discusses the desirable attributes of power system protection, including dependability, security, sensitivity, selectivity, reliability, and the

[Contact Us](#)





The essentials of directional protection and selectivity in

And because of this, the usage of directional protection is important in order to avoid disconnection of unnecessary circuits. As normal overcurrent

[Contact Us](#)



Electronics , Special Issue : Key Relay Protection Technologies

Key Relay Protection Technologies Applicable to New Power Systems Special Issue Editors Special Issue Information Keywords Benefits of Publishing in a Special Issue Published Papers A special

[Contact Us](#)

Basic protection relay knowledge

A fast and selective arc fault mitigation for air-insulated LV & MV switchgear and Relion protection and control relays and sensor technology protect staff and plant facilities for many years.

[Contact Us](#)



IEC Standard for Relay Coordination - Complete Guide

Learn the IEC standard for relay coordination in power systems. This detailed guide covers relay settings, coordination studies, IEC 60255

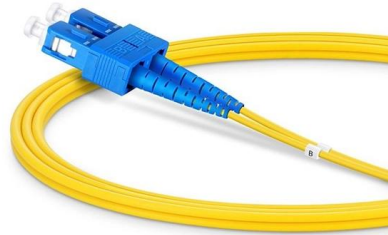
[Contact Us](#)



Maximizing Line Protection Reliability, Speed, and Sensitivity

speed, sensitivity, dependability, security, and selectivity. The paper considers the use of various communications channels, including direct relay-to-relay fib

[Contact Us](#)



Research on a Multi-algorithm Coordinated Protection

It reliably identifies high-resistance and intermittent arc faults, significantly improving protection sensitivity and selectivity under various fault conditions. This research offers an effective

[Contact Us](#)

Maximizing line protection reliability, speed, and sensitivity

Protection relay is designed based on the basis of selectivity, reliability, speed and sensitivity . One of protection relays used to protect the circuits in power system is overcurrent

[Contact Us](#)



What is selectivity in the context of protective relays?

Conclusion: Understanding the concept of selectivity in protective relays is essential for ensuring the safe and reliable operation of electrical power systems. Selectivity ensures that faults are accurately

[Contact Us](#)



Protective Relaying in High Voltage Networks: Principles

Explore principles and configurations of protective relaying in high voltage systems. Ensure fast, selective fault clearance per IEC/IEEE standards.

[Contact Us](#)



Installing and Maintaining Protective Relay Systems

Ensuring that protection systems operate reliably is crucial, and a good preventive maintenance program ensures that protection and relay systems function properly without causing additional problems.

[Contact Us](#)

Relay protection sensitivity integrated optimal placement and capacity

The paper is structured as follows. Section 2 discusses the IIDG effect on the relay protection sensitivity and section 3 presents the relay protection sensitivity integrated optimization method. The IIDG

[Contact Us](#)



Overcurrent Protection - Selectivity Analysis

The main objective of relay co-ordination is to achieve the desired selectivity without losing the sensitivity and quick fault clearing time. NEPLAN allows the user to perform relay co-ordination with

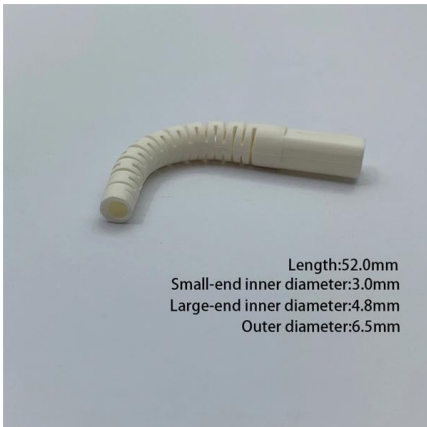
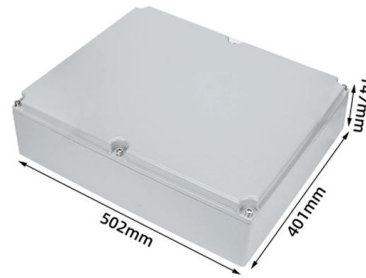
[Contact Us](#)



Coordination of protections as a multi-objective problem, and Pareto

This article shows the formal formulation of the coordination of protections as the multi-objective problem of simultaneous maximization of the desired features of the protective system.

[Contact Us](#)



Module 1 : Fundamentals of Power System Protection

A relay is said to be dependable if it trips only when it is expected to trip. This happens either when the fault is in its primary jurisdiction or when it is called upon to provide the back-up protection.

[Contact Us](#)

Contact Us

For datasheets, pricing, or custom fiber access solutions, please visit:
<https://frindel.es>