

# **Relay protection devices are installed in**





## Overview

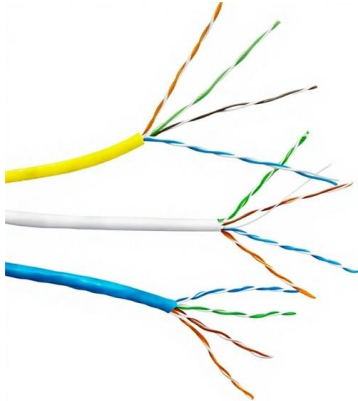
---

Protective relays are essential devices used in electrical power systems to detect faults and abnormal conditions, initiating corrective actions to prevent equipment damage and ensure system stability. Selectivity is a mandatory requirement for all protection, but the importance of it depends on the application. For example, unselective protection operation during a medium voltage network fault will cause an outage for an unnecessarily large number of consumers. Types of Protective Relays: Protective relays are categorized by their mechanism (electromagnetic, static, mechanical) and function. Its main purpose is to safeguard electrical equipment like transformers, generators, and transmission lines from damage due to.



## Relay protection devices are installed in

---



### Protective Relaying Essentials

In this scheme, the protective relay detects the fault current and sends a trip signal to the circuit breaker, which isolates the fault. Coordination with Other Protection Devices Protective relays

[Contact Us](#)

### Protective relay

The fault can be located upstream or downstream of the relay's location, allowing appropriate protective devices to be operated inside or outside of the zone of

[Contact Us](#)



### Basic protection relay knowledge

A fast and selective arc fault mitigation for air-insulated LV & MV switchgear and Relion protection and control relays and sensor technology protect staff and plant facilities for many years.

[Contact Us](#)



### Protective Relay Basics

Traditionally, protective relays were electromechanical devices utilizing induction disk, coils, contacts, and solenoid elements to determine protective characteristics.

[Contact Us](#)



### Huijue engineering specific Fiber optic

HJ GROUP offers a wide variety of product types for you to choose from.



### 4 Power Transformer Protection Devices Explained In

The power transformer protection as a whole and the utilization of the below presented protection devices are not discussed here. 1. Buchholz (Gas)

[Contact Us](#)

### Understanding Protection Relays in Electrical Power Systems

This device plays an essential role in monitoring electrical systems, detecting faults, and initiating actions to prevent further damage to equipment and ensure the safety of personnel. In this article, we

[Contact Us](#)



### A Complete Guide to Protective Relays and Their Role

Protective relays work in conjunction with various electrical protection and control devices, such as Miniature Circuit Breakers (MCBs) and Molded

[Contact Us](#)

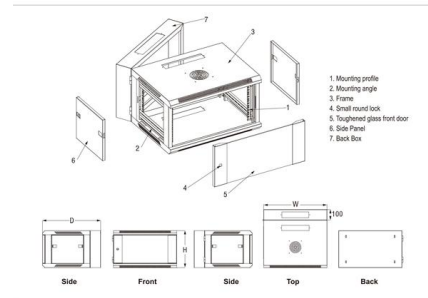




### Protection relays

A big difference between conventional electromechanical and static relays is how the relays are wired. Electromechanical and static relays have fixed wiring and the

[Contact Us](#)



### Circuit Protection Devices - Electrical Safety & Reliability

Circuit Protection Devices Explained By Howard Williams, Associate Editor Substation Relay Protection Training Our customized live online or

[Contact Us](#)

### Protection relays

Protection relays Numerical relays are based on the use of microprocessors. The first numerical relays were released in 1985. A big difference between conventional

[Contact Us](#)



### Relays Part 4: The Protective Relay Basic Theory

The types of protective relays that exist are overcurrent, electromechanical, directional, distance, pilot, and differential relays. The circuit diagram of the protective relay is made up of current

[Contact Us](#)

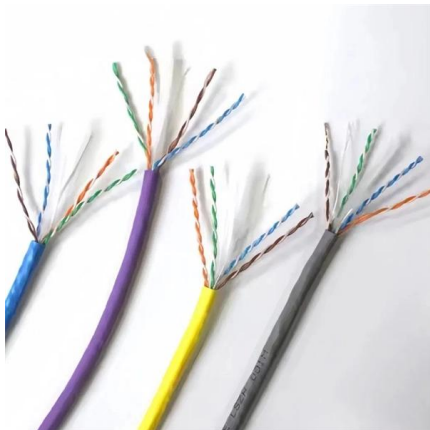




## Practical handbook for relay protection engineers , EEP

This handbook covers the code of practice in protection circuitry including standard lead and device numbers, mode of connections at terminal

[Contact Us](#)



### Protection Relay:Types, wiring diagram and working principle.

Protection relay is an electromechanical monitoring safety device which senses fault and provide trip signal to the breaker as per set value in LT and HT panel.

[Contact Us](#)

### Relay

Safety relays are devices which generally implement protection functions. In the event of a hazard, the task of such a safety function is to use appropriate

[Contact Us](#)



### What's a protective relay and what does it protect?

A protection relay is a smart device that receives inputs like current, voltage, resistance, temperature, or even light, compares them to set points, and

[Contact Us](#)





## Understanding Protective Relays in Electrical Power Systems -

Protective relays are vital components in electrical systems, ensuring system stability and safety by detecting and responding to faults. Their ability to automatically isolate faulty sections reduces

[Contact Us](#)



## Voltage Protection Relay: Working Principle and Functions

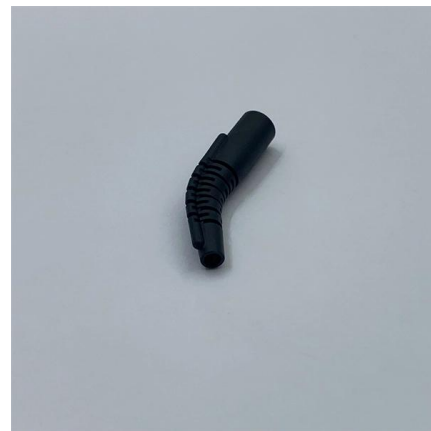
A voltage protection relay is an essential device to keep electrical systems running efficiently and safely. These devices are designed to suit many unique situations.

[Contact Us](#)

## Understanding Protection Relays: Importance and

Discover the importance of protection relays in safeguarding electrical equipment. Learn about types like single-phase, three-phase, voltage, and

[Contact Us](#)



## Protective relay basics , Eaton PSEC

Learn everything you need to know about protective relays, the essential devices used to safeguard electrical power systems from faults and abnormal conditio

[Contact Us](#)

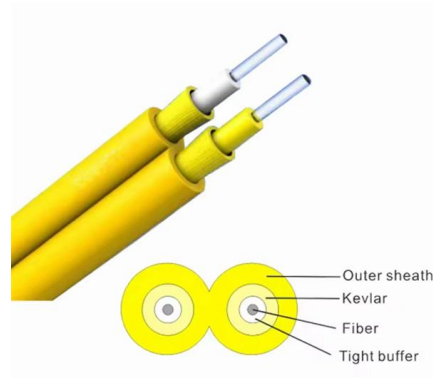




## Types of Electrical Protection Relays or Protective Relays

Protective relays can be categorized based on their

[Contact Us](#)



### Protection Relay: Types, wiring diagram and working principle.

Protection relay is an electromechanical monitoring safety device which senses fault and provide trip signal to the breaker as per set value in LT and HT panel. The Protection devices is over current

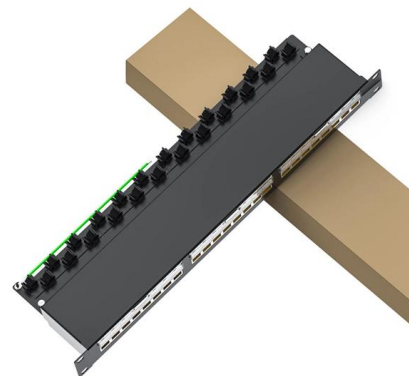
[Contact Us](#)



### Essential Guide to Protective Relays: Types & Applications

Discover protective relays, their types, and applications in power distribution and industrial settings. Learn how they enhance system safety and efficiency.

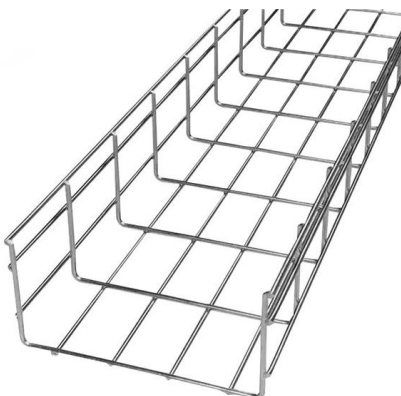
[Contact Us](#)



### Protective Relay: Working, Types, and Applications

Learn about protective relays, their working principle, types, and applications in power systems. Discover how relays protect transformers,

[Contact Us](#)





## Protection Device : Types of Protection Devices

What is a Protection Device? The circuit protection device is an electrical device used for preventing an unnecessary amount of current otherwise a short circuit.

[Contact Us](#)



## Contact Us

---

For datasheets, pricing, or custom fiber access solutions, please visit:  
<https://frindel.es>