

# **Relay protection and safety device activation deactivation**





## Overview

---

This guide presents practical circuit solutions to help prevent unintended activation or deactivation, with a focus on time and impulse relay configurations. In industrial settings, one well-known safety method is the two-hand start system. For example, unselective protection operation during a medium voltage network fault will cause an outage for an unnecessarily large number of consumers. Have you ever accidentally pressed a button and activated a device or initiated a process by mistake leading to security or other problems?

If so, the following information will be useful. If not, you might want to consider potential vulnerabilities in your apartment, workshop, etc. Safety relays are becoming a popular component in safety systems, due to increasing regulations and attempts to safeguard operators from hazards.



## Relay protection and safety device activation deactivation

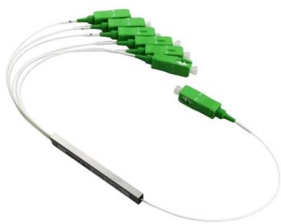
---



### Protective Relaying

Typical Relay and Circuit Breaker Connections  
Protective relays using electrical quantities are connected to the power system through current

[Contact Us](#)



### Verifying Safety Relay Activation Sequence During Reset

Learn how to verify the precise sequence of safety relay activation and deactivation during a reset, ensuring compliance with safety standards and reliable operation.

### Time Delay Relays: Types, Functions, and Applications

Discover the essentials of Time Delay Relays. Learn how they work, types, applications, wiring, and troubleshooting tips for optimal performance.

[Contact Us](#)



### Function of safety relay explained

With their diverse functionality, safety relays can implement almost any safety function, such as monitoring the entire safety chain from the sensor to the

[Contact Us](#)



### What is a Protective Relay? Principle, Advantages,

A protective relay is an electrical component that is designed to trip a circuit breaker when a fault is encountered or identified.

[Contact Us](#)



### Power System Protective Relays: Principles & Practices

Protective relays and devices have been developed over 100 years ago to provide "lastline" of defense for the electrical systems. They are intended to quickly identify a fault and isolate it so the balance of

[Contact Us](#)



### A Comprehensive Guide to Time Delay Relays

What is a Time Delay Relay? A time delay relay (TDR) is an electrical device that introduces a time delay between the application of an input signal and the

[Contact Us](#)

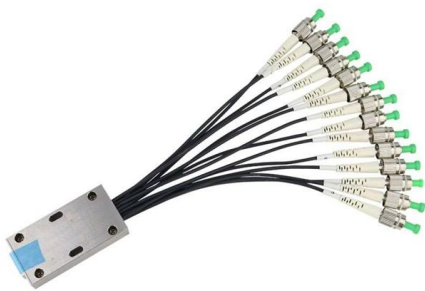




## What is a Protective Relay? , Keltour Controls Inc

Reliability and safety are paramount in the vast and intricate power systems world. Enter the protective relay, a crucial device designed to detect and respond to

[Contact Us](#)



## Types of Electrical Protection Relays or Protective Relays

A protective relay is an automatic device that detects abnormalities in an electrical circuit and closes its contacts. This action completes

[Contact Us](#)

## Voltage Protection Relay: Working Principle and Functions

A voltage protection relay is an essential device to keep electrical systems running efficiently and safely. These devices are designed to suit many unique situations.

[Contact Us](#)



## Relay Fundamentals: A Comprehensive Guide for

Time-Delay Relays: Time-delay relays incorporate a timer to control the activation or deactivation of the contacts after a specified time interval,

[Contact Us](#)





## Practical handbook for relay protection engineers , EEP

This handbook covers the code of practice in protection circuitry including standard lead and device numbers, mode of connections at terminal

[Contact Us](#)



## 8 Functions of Relay Module in Fire Alarm Systems

The fire alarm relay module performs 8 key functions in fire alarm systems, including device activation, system integration, fault isolation, and sequential control. These functions ensure a

[Contact Us](#)



## Explanation of structure and function of a safety relay

The device is designed in such a way that any faults in the input circuit are detected, e.g. contact welding on an emergency off/emergency stop

[Contact Us](#)



## Protective Relaying Principles and Applications

Protective Relaying Principles and Applications  
The article provides an overview of protective relaying principles and their applications for high-voltage power system

[Contact Us](#)





## Protection relays

Numerical relays are based on the use of microprocessors. Numeric relays are programmable. Most numerical relays are also multi-functional.

[Contact Us](#)



Network Cabinet & Rack

## Types of Electrical Protection Relays or Protective Relays

? Key learnings: Protective Relay Definition: A protective relay is an automatic device that senses abnormal conditions in electrical circuits and

[Contact Us](#)

## 700-2.14: Safety Relays

Introduction Safety relays are becoming a popular component in safety systems, due to increasing regulations and attempts to safeguard operators from hazards. When applied correctly, safety relays

[Contact Us](#)



## Understanding Protective Relays in Electrical Power Systems -

Explore the world of protective relays and their vital role in ensuring the safety and reliability of electrical power systems.

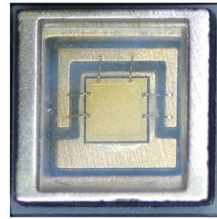
[Contact Us](#)





Safety relays are devices which generally implement protection functions. In the event of a hazard, the task of such a safety function is to use appropriate

[Contact Us](#)



### Understanding Protective Relays in Power Systems

Protective relays are critical components in power systems, providing essential protection for various elements such as generator sets, outgoing feeder

[Contact Us](#)



### Safety Relays Explained: A Guide to How They Work

Safety relays reduce risk in machinery by ensuring safe shutdowns and detecting internal failures. Read more about how they work here.

[Contact Us](#)



### Protective Relay Basics

Traditionally, protective relays were electromechanical devices utilizing induction disk, coils, contacts, and solenoid elements to determine protective characteristics.

[Contact Us](#)





### Basic protection relay knowledge

People/plant safety A fast and selective arc fault mitigation for air-insulated LV & MV switchgear and Relion protection and control relays and sensor technology protect staff and plant facilities for many

[Contact Us](#)



### The basics of power system protection that every

Introduction to relay protection Protection is the branch of electric power engineering concerned with the principles of design and operation of

[Contact Us](#)



### Relay Protection against Accidental switching On/Off.

Have you ever accidentally pressed a button and activated a device or initiated a process by mistake leading to security or other problems? If so, the following information will be useful.

[Contact Us](#)



### Basic protection relay knowledge

A fast and selective arc fault mitigation for air-insulated LV & MV switchgear and Relion protection and control relays and sensor technology protect staff and plant facilities for many years.

[Contact Us](#)



### 700-2.14: Safety Relays



This publication describes the operation of a safety relay, discusses applications, outlines some of the standards that reference safety, and provides specifications for Allen-Bradley safety relays.

[Contact Us](#)



## Contact Us

---

For datasheets, pricing, or custom fiber access solutions, please visit:  
<https://frindel.es>