

# Relay protection SV quality level





## Overview

---

This paper discusses communications conditions, such as bandwidth limitations, latency, and packet loss, and analyzes them with respect to SV-based protection. We examine the impacts of SV data loss on line percentage differential, Alpha Plane differential, and line. An SV-based system includes merging units (MUs) that convert analog signals to SV, Ethernet network switches, a high-accuracy time source, fiber-optic cables, and SV relays, all connected to a communications network. Selectivity is a mandatory requirement for all protection, but the importance of it depends on the application. For example, unselective protection operation during a medium voltage network fault will cause an outage for an unnecessarily large number of consumers. Protective Relays - Technical Seminar Nov 2016 - Copyright: IEEE 2 Abstract: Protective relays and devices have been developed over 100 years ago to provide "lastline" of defense for the electrical systems. This document includes: The document is divided into the four major sections identified above. This is why protection relays must undergo thorough tests throughout their entire lifecycle - from development and manufacturing to commissioning and regular maintenance.



## Relay protection SV quality level

---



### **Practical Guide to Substation Testing Using IEC 61850 Mode and**

Practical Guide to Substation Testing Using IEC 61850 Mode and Behavior Edson Hernández, Tovah Whitesell, and Karen Leggett Wyszczelski, Schweitzer Engineering Laboratories, Inc.

[Contact Us](#)

### **Protective Relaying in High Voltage Networks: Principles**

Protective relaying is the backbone of fault detection and system isolation in high voltage (HV) power networks. As transmission systems grow

[Contact Us](#)



### **SEL-487E**

SEL SV combines protection in the merging unit with the flexibility of IEC 61850-9-2 to increase power system reliability. SEL SV merging units (or other IEC 61850-9-2 SV-compliant units) digitize signals

[Contact Us](#)



### **Sampled Values Support Now Available in More SEL**

SEL's lineup of IEC 61850-9-2 Sampled Values (SV) protective relays has expanded, allowing substation designers to apply an interoperable network-based digital



### Overview of Measuring / Motor Protective Relays

The JEM 1357 standard (Inductive and Static Protective Relays for Three-phase Inductive Motors) stipulates that the must operate value should fall between

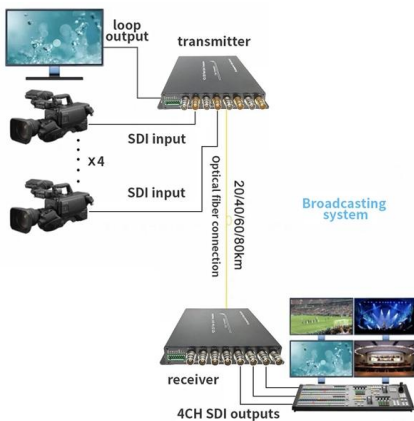
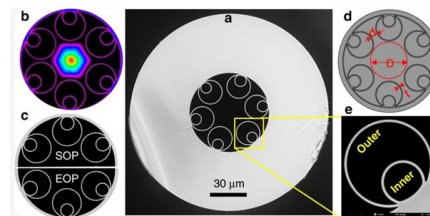
[Contact Us](#)



### What is Protection Relay?

A protection relay is a crucial component of electrical systems that safeguard infrastructure, employees, and equipment from electric problems and

[Contact Us](#)



### Relay Maintenance and Testing

Ensure optimum system performance, efficiency, and safety with preventive relay maintenance and testing Today's challenges in relay maintenance and testing are many. Due to rapid advancements

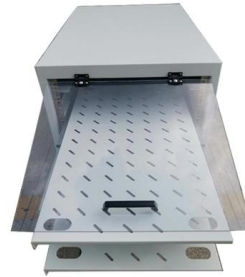
[Contact Us](#)



### Protection and Testing Considerations for IEC 61850 Sampled Values

Ultimately, they need to prove that SV-based protection schemes are comparable to traditional protection systems. This paper discusses communications conditions, such as bandwidth limitations,

[Contact Us](#)



### Installing and Maintaining Protective Relay Systems

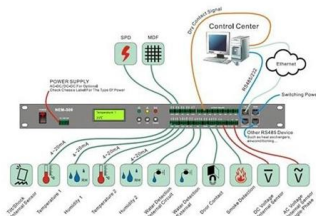
Introduction Relay systems protect high-voltage equipment and transmission lines to ensure safe, stable systems. Although failure of a protective relay system may have severe local or regional impacts,

[Contact Us](#)

### Protection Relays by Application

Schneider Electric Australia. Protection relays for medium-voltage and high-voltage applications including overcurrent, arc, motor, transformer, capacitor banks and

[Contact Us](#)



### Operation, maintenance, and field test procedures for

Operation, maintenance, and field test procedures for protective relays and associated circuits (photo credit: Omicron) The protection circuits

[Contact Us](#)

### Relay Protection



All power system components are liable to faults involving anomalous current flow and insulation breakdown among conductors or between conductors and earth. Unearthed systems require high

[Contact Us](#)



## Home

Explore the future of e-business with the SiePortal Homepage. Industry Mall and Industry Online Support have started to evolve into one, unified platform.

[Contact Us](#)



## Protection and Testing Considerations for IEC 61850 Sampled Values

How Much Delay Does SV Introduce? What Happens if Data Are Lost at Only One End?

[Contact Us](#)



## Protection Relay Testing

Reliably working protection relays are key in modern energy systems. Read on to learn about best practices, challenges, and trends in protection testing.

[Contact Us](#)





## Relay Maintenance and Testing

Ensure optimum system performance, efficiency, and safety with preventive relay maintenance and testing Today's challenges in relay maintenance and testing are many. Due to rapid advancements

[Contact Us](#)



## PROTECTIVE RELAY TESTING

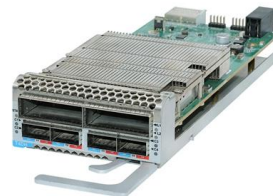
A comprehensive testing program should simulate fault and normal operating conditions of the relay. Acceptance testing, commissioning, and startup will include control power tests, current transformer

[Contact Us](#)

## Basic protection relay knowledge

A fast and selective arc fault mitigation for air-insulated LV & MV switchgear and Relion protection and control relays and sensor technology protect staff and plant facilities for many years.

[Contact Us](#)



## Protection Relay Testing and Commissioning

Since type testing of a digital or numerical protection relay includes software and hardware testing, the type testing procedure is very complex and more challenging than a static or electromechanical relay.

[Contact Us](#)

## Protective Relay Basics



Traditionally, protective relays were electromechanical devices utilizing induction disk, coils, contacts, and solenoid elements to determine protective characteristics.

[Contact Us](#)



### **SEL-421**

SEL SV combines protection in the merging unit with the flexibility of IEC 61850-9-2 or IEC 61869-9. The SEL-421-7 SV merging unit digitizes signals and transmits them via Ethernet over

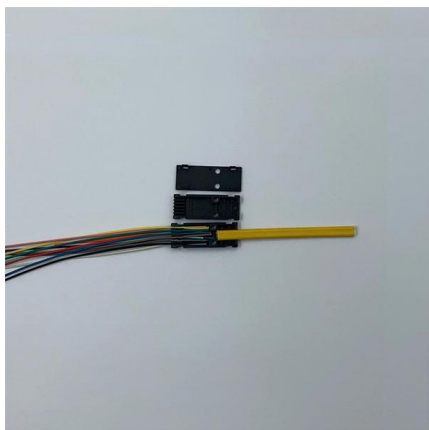
[Contact Us](#)



### **Protective Relay : Working, Types, Circuit & Its**

There are different types of relays available and each type is used based on the requirement. So this article discusses an overview of a protective relay or

[Contact Us](#)



### **Best relay protection practices applied to shunt reactors**

Connections & required protections This technical article explains the protection practices applied to shunt reactors and capacitors as well as to static

[Contact Us](#)



## Power System Protective Relays: Principles & Practices

Protective relays and devices have been developed over 100 years ago to provide "lastline" of defense for the electrical systems. They are intended to quickly identify a fault and isolate it so the balance of

[Contact Us](#)



## PROTECTIVE RELAYING AND POWER QUALITY

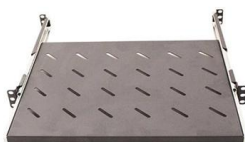
Protection relaying is primary concerned with clearing faults while power quality is concerned with the delivering of reliable power within certain parameters. The protective relaying fault clearing result in

[Contact Us](#)

## SV instantaneous adjustable voltage relay

The SV line of relays is adjustable over a wide range of voltage. Each relay is provided with a mechanical operation indicator and a calibrated scale to indicate the pick-up setting.

[Contact Us](#)



## Voltage Protection Relays: Functions, Types & Applications

Learn what is voltage protection relays, their functions, types, & applications in safeguarding electrical systems from voltage fluctuations and faults.

[Contact Us](#)

Webit Cabling



## Contact Us

---

For datasheets, pricing, or custom fiber access solutions, please visit:  
<https://frindel.es>