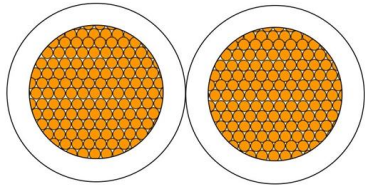


Related diagrams of 35kV busbar bushings





Related diagrams of 35kV busbar bushings



Copper for Busbars - Guidance for Design and Installation

For busbar systems, the maximum working current is determined primarily by the maximum tolerable working temperature, which is, in turn,

[Contact Us](#)

Shaping and connecting rigid busbars in low voltage switchgear

Busbars - machining, bending and shaping The busbars constitute the real "backbone" of every low voltage switchgear. The main busbar and branch busbars supply and distribute the

[Contact Us](#)



35-kV Apparatus Bushings

5-kV Connectors (Elbows) Elliott "B" Series (bolt-in) apparatus bushings are used to construct air-insulated equipment that connects to the utility's underground shielded cable system with IEEE

[Contact Us](#)



600 A 35 kV class deadbreak apparatus bushing

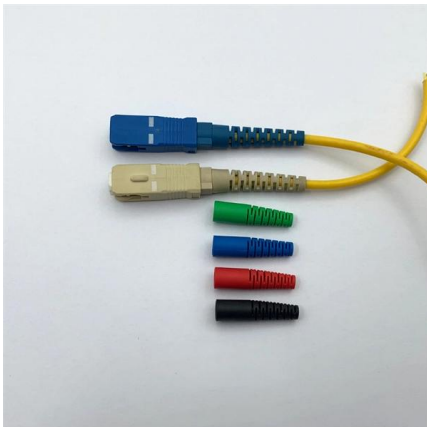
All 600 A separable connectors manufactured according to IEEE Std 386TM-2006 will operate with this bushing. The epoxy bushings are designed for sidewall mounting in transformers, switches, and



Heat shrink tubes for insulation of busbars with voltage

Heat shrink tubes ???-35 - specialized high-voltage dual-walled tube with shrink ratio 2.5: 1, without the suppression of combustion, designed to isolate the copper

[Contact Us](#)



Agrawal-29New

29.1 Precautions in mounting insulators and conductors Often a failure on a fault may be due not to the inadequate size of busbars, fasteners or insulators but to poor alignment of the insulators or to too

[Contact Us](#)



600 A 35 KV Class Deadbreak Apparatus Bushing:

600a-35kv-class-deadbreak-apparatus-bushing-ca800020en - Free download as PDF File (.pdf), Text File (.txt) or read online for free.

[Contact Us](#)





High Voltage Wall Bushing

High voltage wall bushings for power stations are suitable for use in power stations, substations and electrical equipment of 35kV and below, for

[Contact Us](#)



LYC217 35kV Insulation Bushing for Switchgear Panels

Our 35kV High Voltage Epoxy Resin Bushing is designed for use in medium and high-voltage electrical equipment, including switchgear, transformers, and circuit

[Contact Us](#)

Non-Segregated phase bus duct

For over 30 years, Eaton's non-segregated phase bus duct has been designed to meet specific installation requirements for reliable power distribution. Typical of such applications are the

[Contact Us](#)



35KV heat shrink bus bar tubing BH-BBT-35KV

BH-BBT-35KV 35KV heat shrink bus bar tubing provides high resistance to tracking and arching and used to enhance the insulation properties of bus bar in

[Contact Us](#)

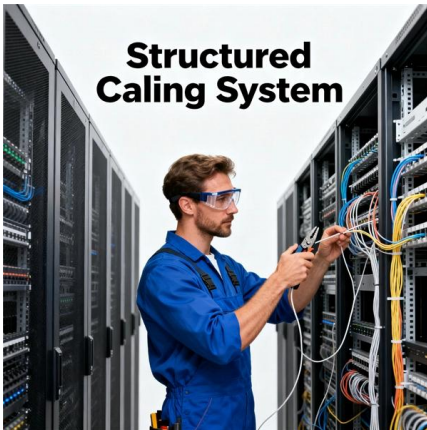


35 kV BUSHING INSERT SMALL INTERFACE



200A 35KV BUSHING INSERT SMALL INTERFACE
CONTENTS ARE CONFIDENTIAL AND THE
EXCLUSIVE PROPERTY OF HUBBELL POWER
SYSTEMS. NO PUBLICATION, DISTRIBUTION

[Contact Us](#)



Power Applications Using High-force Press-Fit

The full integration of busbars within power applications by using pluggable, high-force, press-fit technology can significantly improve power efficiency, reduce the bill-of-material costs, decrease

[Contact Us](#)

Busbar

In electric power distribution, a busbar (also bus bar) is a metallic strip or bar, typically housed inside switchgear, panel boards, and busway enclosures for

[Contact Us](#)



TRANSFORMER BUSHINGS

Condenser bushings manufactured by TELK arc self contained hemlctically scaled and hence practically maintenance free. Ilowever failure of bushings can cause costly power breakdown and hence to

[Contact Us](#)





Design and installation of low voltage busbar trunking

Cable jointer not required. Busbar trunking systems may be dismantled and re-used in other areas. Busbar trunking systems provide a better

[Contact Us](#)



35kV 200kV BIL Bushing Extender

35kV 200kV BIL Bushing Extender Product Data Sheet Richards 35kV 600A (P635BE-200) and 900A (P935BE-200) Bushing Extender provides an insulated, fully shielded connection between an

[Contact Us](#)

600 A 35 kV class deadbreak apparatus bushing

General Eaton's Cooper Power™ series 600 A, 35 kV class deadbreak apparatus bushing meets the full requirements of IEEE® Std 386™-2006 for separable insulated connector systems. All 600 A



[Contact Us](#)



(ANSI)15/25/35kV 200A INTEGRAL BUSHING WELL

Installation Dimensions And Drawing of Mounting Flange: Bushing Well Body Style Profile Diagram:

[Contact Us](#)

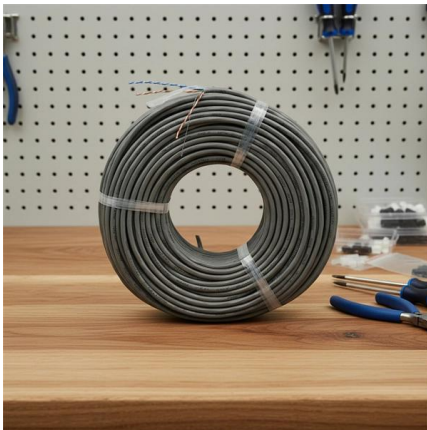


200 A 35 kV class three-phase integral loadbreak bushing

The bushing is designed for pad-mounted transformers, switchgear and other apparatus filled with transformer oil, Envirotemp™ FR3™ fluid or an approved equivalent. It eliminates the insert-to-well



[Contact Us](#)



P635AB P935AB 35kV Apparatus Bushings

Richards 35 kV 600A (P635AB) and 900A (P935AB) Deadbreak Apparatus Bushings are Medium Voltage accessories utilized in equipment such as Transformers to provide a mating interface for

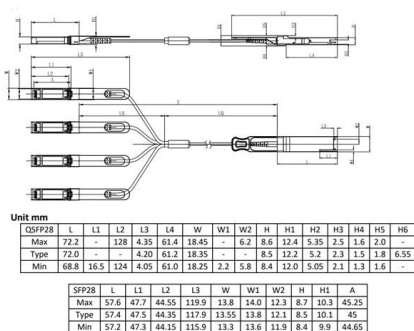
[Contact Us](#)

Installation of hard busbars, wall bushings and post

Since the busbar is a conductor that collects and distributes current, it plays an important role in power transformation and distribution devices. The



[Contact Us](#)



Understanding Busbars: Types, Applications, and

Discover everything about busbars in our comprehensive guide. Learn about the types, applications, and advantages of busbars in modern electrical

[Contact Us](#)



2CDC446001D0201

Busbar systems and installation accessories
When connecting aluminum conductors, ensure that the contact surfaces of the conductors are cleaned, brushed and treated with grease.

[Contact Us](#)



200 A 35 kV class three-phase integral loadbreak bushing

General Eaton meets all the requirements of IEEE Std 386TM standard, Separable Insulated Connector Systems, and combines the advantages of a reliable one-piece design with the operating features

[Contact Us](#)



Contact Us

For datasheets, pricing, or custom fiber access solutions, please visit:
<https://frindel.es>