

Regulations for Temporary Distribution Boxes





Overview

Construction site temporary installations must use 110V CTE for portable tools, IP-rated distribution boards, 30 mA RCD protection on every circuit, and quarterly EICR inspections. The IET's Guide to Temporary Electrical Systems has finally arrived after undergoing a long-awaited update. The law says you must keep every part of your construction site in 'good order' and every place of work clean. However, exposure to weather, frequent relocation, rough use and other conditions not normally encountered with conventional wiring systems necessitate special consideration not required in other applications or in completed structures.



Regulations for Temporary Distribution Boxes



What are Power Distribution Boxes? , Power Temp

What are Power Distribution Boxes? If power is needed across a long distance or within the hard-to-reach areas, portable power distribution boxes are

[Contact Us](#)

Essential Guidelines for Safe Temporary Electrical

Understanding the regulatory frameworks governing temporary electrical installations is vital to ensuring compliance and Safety on construction sites. Various

[Contact Us](#)



Understanding Distribution Boxes: Your Guide to Power

Weatherproof Distribution Boxes These serve specific outdoor purposes, with rain, dust, and extreme temperatures sealed shut, protecting any

[Contact Us](#)

Five mistakes when installing temporary distribution boxes and how to

Temporary distribution boxes are indispensable at construction sites, events and temporary workplaces. Yet things often go wrong when installing or renting these installations,



Safety Guidelines for Temporary Power Distribution

Learn about the essential safety guidelines for temporary power distribution to protect employees from electrical hazards.

[Contact Us](#)



A Guide to Temporary Power Distribution Boxes , ATI

Temporary power distribution boxes usually cost anywhere between \$150 to \$1,500, making them a relatively inexpensive option when compared to

[Contact Us](#)



Temporary distribution boxes

Our temporary distribution boxes are ideal for a variety of applications, such as events, construction sites and crisis shelters. We provide safe, efficient and

[Contact Us](#)





what is a temporary power distribution box?

A temporary power distribution box is a portable device designed to distribute electrical power from a single source to multiple outlets. These boxes

[Contact Us](#)



Temporary electrical installations on construction and

The CDM regulations apply to all building and construction work and include new build, demolition, refurbishment, extensions, repairs and

[Contact Us](#)

Temporary Power Regulations in Construction

It reviews regulations around equipment approval, ground-fault protection, wiring methods, boxes and fittings, panelboards, lockout/tagout procedures, and

[Contact Us](#)



FAQ's Site Temp Supply

Temporary electrical installations must comply with BS 7671:2018 (18th Edition Wiring Regulations) and the Electricity at Work Regulations 1989. All installations must be safe, regularly inspected, and

[Contact Us](#)



What are the requirements for the temporary use of distribution box

The main distribution box shall be located near the power supply, and the distribution box shall be installed in the area where the electrical equipment or load is concentrated. The distance between

[Contact Us](#)



Temporary Power Distribution and Industrial Lighting

Get reliable temporary power distribution and construction lighting solutions for your worksite needs with our portable power boxes, panels, and LED work lights.

[Contact Us](#)

Choosing the right power distribution box solution for your needs

Different types of power distribution boxes tend to be designed for different applications. For example temporary power distribution boxes are best suited for construction sites and events, offering a quick

[Contact Us](#)



Electrical Distribution Box Solution , J& HW Group

The temporary distribution box is a highly promising area for development. With the progression of urbanization, advances in technology and automation, the need for

[Contact Us](#)



Does BS 7671 apply to temporary power distribution?

Now, when it comes to electrical installations and power distribution, we know that it's not always immediately clear how and when specific regulations apply. A notable example is with one of the

[Contact Us](#)



Guide to Temporary Electrical Systems, 2nd Edition

Importantly, the requirements for specifying appropriate earth electrode resistances are explained, along with the typical failure modes experienced with temporary

[Contact Us](#)

Temporary Power Distribution Box in the Real World: 5 Uses

Temporary power distribution boxes are essential tools across various industries. They provide flexible, reliable electrical power in locations where permanent wiring isn't feasible or necessary.

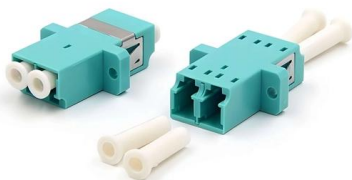
[Contact Us](#)



Temporary electrical wiring for construction sites

All 120-volt, single-phase, 15- and 20-ampere receptacles shall be of the grounding type and their contacts shall be grounded by connection to the equipment grounding conductor of the circuit

[Contact Us](#)





Understanding Power Distribution Boxes: Types, Features, and

This guide delves into the intricacies of power distribution boxes, shedding light on their design, functionality, and regulatory standards. Readers can expect to gain a comprehensive

[Contact Us](#)



Does BS 7671 apply to temporary power distribution?

BS 7671 is a key electrical regulation enforcing many safety requirements, but how does this apply (if at all) to temporary installations? Here we take a closer look.

[Contact Us](#)

Construction Site Temporary Supply , 110V Guide UK , Elec-Mate

Construction Site Temporary Supply: The Complete 110V Guide for UK Sites Construction site temporary installations must use 110V CTE for portable tools, IP-rated distribution

[Contact Us](#)



Electrical Power Distribution Boxes for Temporary Event

Small events may require a single single-phase distribution box, while larger events will likely need multiple 3-phase distro boxes for high-demand

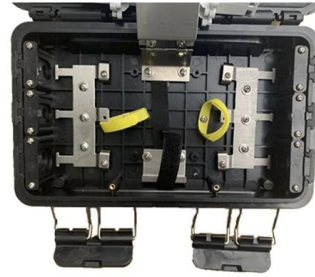
[Contact Us](#)



Temporary Electrical Supply HSE Procedure For

Below procedure will help you to establish a safe standard for the installation of temporary and permanent electrical fixtures/appliances on project sites.

[Contact Us](#)



What are the requirements for the temporary use of distribution box

First of all, the construction distribution box should be placed in dry, ventilated and normal temperature places, pay attention to avoid harmful media such as smoke, steam, etc., no sundries can be

[Contact Us](#)

Understanding NFPA 70, Article 590: Temporary Electrical Installations

Specific requirements for overcurrent protective devices (OCPDs) are also outlined to enhance safety. The NFPA 70, Article 590, plays a crucial role in ensuring the safety of temporary

[Contact Us](#)



Expert Guide: Selecting Temporary Power Distribution Boxes

Different temporary power distribution boxes were selected for workshops, warehouses, and tank farms based on their specific hazardous area ratings and protective features. A one-size-fits

[Contact Us](#)





Temporary Power Distribution Boxes for Electrical

Temporary power distribution boxes for flexible electrical installation. Robust solutions for construction sites, events and temporary energy infrastructure.

[Contact Us](#)



Temporary Power Safety Solutions

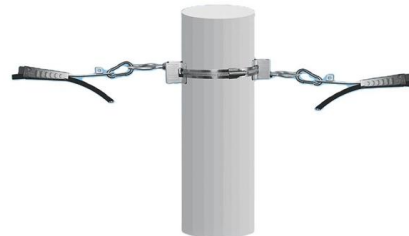
One of the more common violations cited by OSHA is the improper use of conventional outlet boxes for temporary power applications. It is NOT acceptable

[Contact Us](#)

Materials storage and waste management

Safe and efficient materials storage depends on good co-operation and co-ordination between everyone involved including, client, contractors, suppliers and the construction trades. On all

[Contact Us](#)



- IP65/IP55 OUTDOOR CABINET
- OUTDOOR TELECOM CABINET
- OUTDOOR ENERGY STORAGE CABINET
- 19 INCH

Temporary Electrical Systems and BS 7909

This safety guidance covers operational electrical equipment and systems, including the requirements for the distribution of electricity in a

[Contact Us](#)



Contact Us

For datasheets, pricing, or custom fiber access solutions, please visit:
<https://frindel.es>