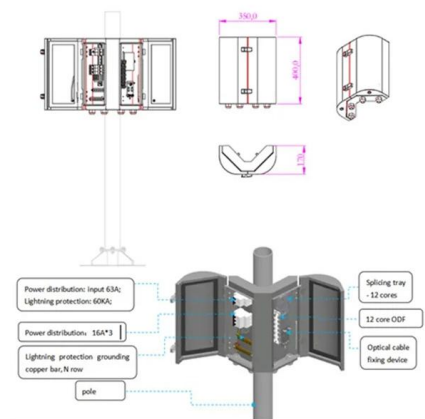


Red fire protection electrical distribution box markings





Electrical Panel Compliance Made Clear with Floor Marking

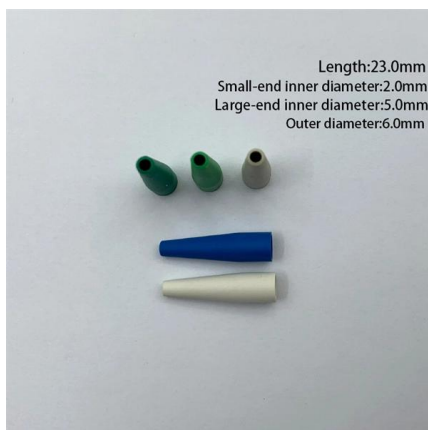
Learn about electrical panel clearance requirements, OSHA electrical panel requirements, and effective floor marking for hazard-free spaces with

[Contact Us](#)

Electrical

Fire Alarm equipment per the Fire Alarm specification Cubicle/space labels for all MCCs, substations, and distribution switchboards Identify fuse type and size on the cover of fusible equipment. Special

[Contact Us](#)



700.10 (A) Identification.

All boxes and enclosures (including transfer switches, generators, and power panels) for emergency circuits shall be permanently marked so they will be readily

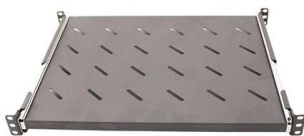
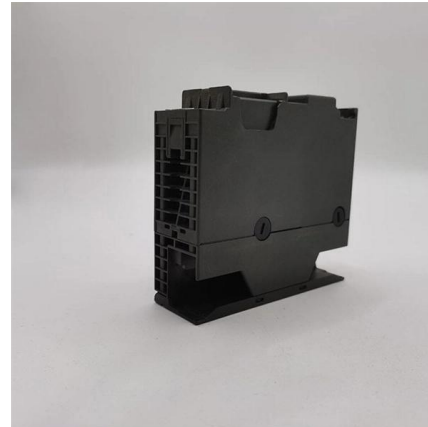
[Contact Us](#)



Identifying Emergency Systems: Clear marking of

Marking equipment and wiring for emergency systems Now that a more thorough understanding of emergency systems has been established, the next Code rule

[Contact Us](#)



Hazardous locations - CEC classifications

Hazardous locations - CEC classifications Class I -- 01 This diagram illustrates the escape paths of gases generated by an explosion within an electrical enclosure. When an explosion occurs, hot or

[Contact Us](#)

SECTION 26 05 53

Use pressure-sensitive plastic labels at exposed locations and indelible marker (black or red) at concealed boxes. All fire alarm boxes shall have covers painted red.

[Contact Us](#)



Standard for Fire Safety and Emergency Symbols

5.1.1* This chapter presents standard referents and symbols that shall be used for visually alerting fire fighters and other emergency responders during fire and related emergencies.

[Contact Us](#)



IEC 60446 Explained: Wiring Colors & Terminal Identification Guide

Master IEC 60446 standards for electrical safety. Learn wiring color codes, terminal identification, and conductor labeling for compliant installations. Download free PDF guide.

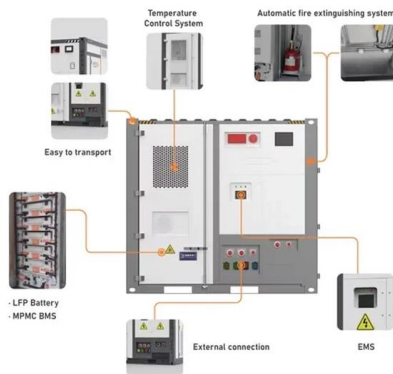
[Contact Us](#)



& Guidelines Facilities Standards

4.1.1 The following color coding shall be represented on all feeders, branch circuits, and distribution conductors and shall include the correct phase type and identification throughout the

[Contact Us](#)



9. Reading an Ex Label , Ex-pert Electrical Perspective

9. Reading an Ex Label One thing is sure that the Ex Labels or Markings are never written in GREEK and there is no 'fine print ' or any 'between the lines'

[Contact Us](#)



Safety Signals

It offers detailed technical data and calculations for various fields such as fluid mechanics, material properties, HVAC systems, electrical engineering, and more.

[Contact Us](#)



How to Read and Interpret Your



Distribution Box Labels

Understand your distribution box labels to identify circuits, improve safety, and troubleshoot electrical issues in your home with confidence.

[Contact Us](#)



SECTION 26 05 53

Use consistent letter/number conductor designations throughout on wire/cable marking tapes. Match identification markings with designations used in panel boards shop drawings, Contract Documents,

[Contact Us](#)



LoRawan outdoor base station

- * Industrial Internet gateway
- * Compatible with LoRaWAN network,
- * ClassA/B/C mode
- * Support 8/16 channel
- * Supports PoE power
- * supply and backup battery power supply
- * 10KV lightning protection



Wiring Color Codes

Wire ID is essential for safety and efficiency, and adhering to wire color codes is an integral aspect. Learn about NEC wire color code standards, 3-Phase color codes.

[Contact Us](#)



Electrical and Pipe Color Codes Guide , PDF , Green

There are 20 items listed with descriptions of the system or material and the designated color code for easy identification. The color codes include standards

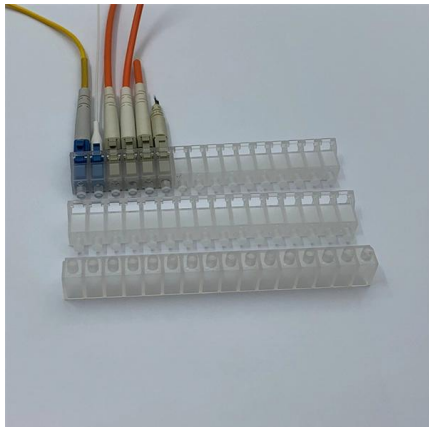
[Contact Us](#)



Fire Rated & Resistant Electrical Enclosures & Junction

The Abtech range of fire rated electrical junction boxes are specified for use in building services and hazardous areas, where ATEX certified enclosures are

[Contact Us](#)



Underground utility colour codes explained

Red - Electric power lines, conduit and cables.
Orange - Telecommunication, alarm or signal lines.
Yellow - Gas, oil, steam, petroleum, or

[Contact Us](#)

Standard for Fire Safety and Emergency Symbols

5.1.1* This chapter presents standard referents and symbols that shall be used for visually alerting fire fighters and other emergency responders during fire and related emergencies.

[Contact Us](#)



IEC 60446 Explained: Wiring Colors & Terminal Identification Guide

Learn wiring color codes, terminal identification, and conductor labeling for compliant installations. Download free PDF guide.

[Contact Us](#)



Is there anywhere in the code that requires a specific color for Fire

Hey all, Has anyone run into a problem using FPLP cable for a fire alarm system where the outer protective coating was not red? We have a contractor who is using yellow cable for a job

[Contact Us](#)



TSA_UM003 Electrical Distribution V2

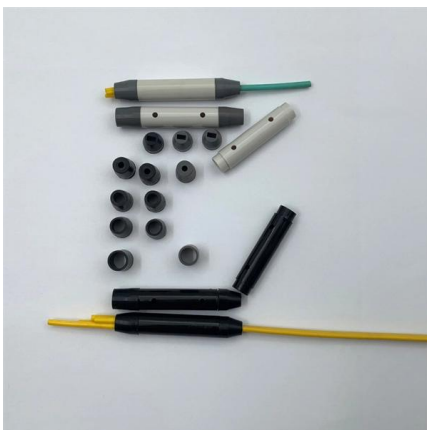
The area should have an appropriate protective electrical rubber mat on the floor and display a resuscitation chart. Appropriate fire-fighting equipment should be available in the immediate area.

[Contact Us](#)

Understanding NEC 700.10: Wiring Requirements for Emergency

Permanent Marking: All boxes, enclosures, transfer switches, generators, and power panels used for emergency circuits must be clearly marked. Cable and Raceway Systems: If boxes

[Contact Us](#)



Fire protection enclosures

Preventive fire protection is not only a matter for those constructing a building. In planning and designing their installations, expert electrical planners and engineers or switchgear manufacturers are

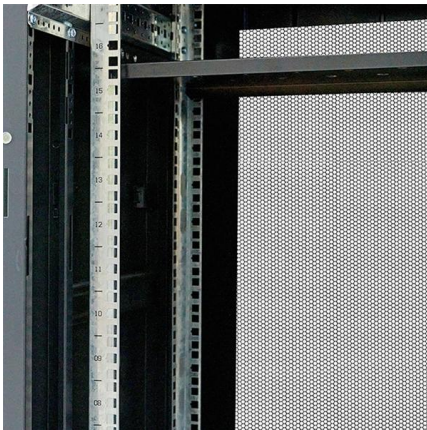
[Contact Us](#)



Clause 6.7

The following equipment/fixtures/fittings for the fire protection systems shall be painted in red.
For those equipment/ fixtures/ fittings not listed below, the colour scheme shall be in accordance

[Contact Us](#)



Graphical Symbols and Abbreviations for Fire Protection Drawings

When marking up a drawing you can use symbols of your own choice, providing you create a legend showing what each symbol represents.

[Contact Us](#)

ECU Fire Protection System for Distribution Boards

The ECU fire protection system was designed to meet new regulations, protecting domestic units and distribution boards from potential fire damage.

[Contact Us](#)



Contact Us

For datasheets, pricing, or custom fiber access solutions, please visit:
<https://frindel.es>