

# **Reconfigurable Optical Add-Drop Multiplexer**





## Overview

---

Optoplex's Reconfigurable Optical Add/Drop Multiplexer (ROADM) module, also known as Tunable Optical Add/Drop Multiplexer (TOADM), is based on a proprietary micro-optics and micro-actuator design, athermal packaging technology, and state-of-the-art thin-film coating. As shown in the figure below, an optical multiplexer combines multiple wavelength signals into a single optical fiber. This article provides an in-depth overview of ROADMs, including their fundamental principles, architecture, functionality, and.



## Reconfigurable Optical Add-Drop Multiplexer

---



2. Improved design is convenient for expansion.

The design of two inlets saves space and allows for rear line entry.

### Mode-Selective Reconfigurable Optical Add-Drop Multiplexers

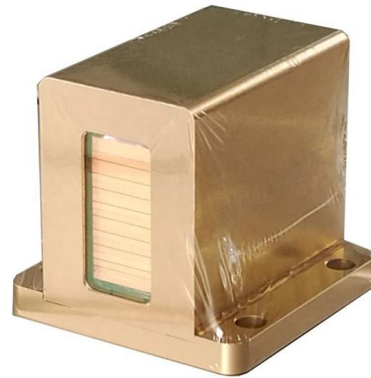
As shown in Figure 1(b), the mode-selective switch can be configured to either pass or drop both modes, or drop one of them. In a reversed configuration, it can also be used to combine two modes applied

[Contact Us](#)

### Reconfigurable optical add-drop multiplexer at 1550 nm using

In this paper, a design of reconfigurable optical add-drop multiplexer (ROADM) is proposed, which consists of magnetically-coupled switches, bus waveguide, drop waveguide, add

[Contact Us](#)



### Design and evaluation of a reconfigurable optical add

Reconfigurable optical add-drop multiplexers (ROADMs) for SDM-based networks must have high scalability in terms of port count.

[Contact Us](#)



### Optimizing performance in elastic optical networks using advanced

Scalable and Economically Efficient Design for Elastic optical networks. Network operators diversify service offerings and enhance network efficiency by leveraging bandwidth-variable



### Introduction to Reconfigurable Optical Add-Drop Multiplexers (ROADMs)

Discover the versatility of Reconfigurable Optical Add-Drop Multiplexers (ROADMs) in modern communication networks. Explore how ROADMs enable flexible routing of optical signals,

[Contact Us](#)

### A Flexible and Reconfigurable Optical Add-Drop Multiplexer for Mode

Reconfigurable optical add-drop multiplexer (ROADM) is one of the key building blocks for on-chip optical networks, which can download the desired signals from the bus waveguide to the



[Contact Us](#)



### Dynamically Reconfigurable Optical Add-Drop Multiplexer/ Filter

Based on a proprietary micro-integrated-optical breakthrough, Agiltron's ROADMs offer unprecedented dynamic channel reconfiguration performance of high low loss, high reliability, ultra compactness,

[Contact Us](#)



## Reconfigurable optical add-drop multiplexer based on thermally

Abstract We report on an eight-channel reconfigurable optical add-drop multiplexer (ROADM) based on micro-ring resonators (MRRs). The effective footprint of the device is about

[Contact Us](#)



## What is Reconfigurable Optical Add-Drop Multiplexer (ROADM)?

A reconfigurable optical add-drop multiplexer (ROADM) is a device that can add, block, pass or redirect modulated infrared (IR) and visible light beams of various wavelengths in a fiber optic network.

[Contact Us](#)



## Reconfigurable Add/Drop Multiplexer Design to Implement Flexibility in

Reconfigurable optical add-drop multiplexer (ROADM) is a key network element enabling flexible handling of wavelengths. Its architecture allows for remote traffic provisioning at the wavelength level

[Contact Us](#)



## Recommendation ITU-T G.672 (05/2025)

This Recommendation deals with the classification and the characteristics of multi-degree reconfigurable optical add/drop multiplexers (MD-ROADMs), including two-degree ROADMs.

[Contact Us](#)

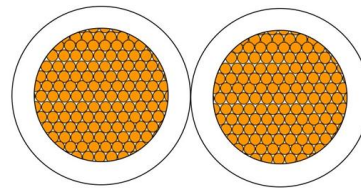




## Optical Switching Systems and Flex-Grid Technologies

This includes the bandwidth-variable optical cross-connect, wavelength selective switch, and reconfigurable optical add/drop multiplexer, as well as flexible transceivers, such as the

[Contact Us](#)



### MORE CASES PRESENTATIONS



## Monolithically integrated reconfigurable add-drop multiplexer for mode

An integrated reconfigurable optical add-drop multiplexer (ROADM) for mode-division-multiplexing systems is proposed and demonstrated for the first time, to the best of our knowledge.

[Contact Us](#)

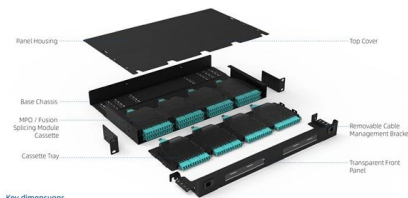


## Dynamically Reconfigurable Optical Add-Drop Multiplexer/ Filter

Product Product Description Description Agiltron reconfigurable Add/Drop Multiplexer (ROADM) is designed dynamically reconfigurable switching and routing applications in next generation optical

[Contact Us](#)

Component Diagram



Key dimensions



## Reconfigurable optical add-drop multiplexers for hybrid mode

A 96-channel silicon-based on-chip reconfigurable optical add-drop multiplexer (ROADM) is proposed and demonstrated for the first time to satisfy the demands in hybrid

[Contact Us](#)



## 4-Port Reconfigurable Optical Add-Drop Multiplexer (ROADM)

Optical Specifications of a C-or L-band, 4-Port Reconfigurable Optical Add-Drop Multiplexer (ROADM). Parameters are specified for End-of-Life(EOL), over passband, over all channels, over operating

[Contact Us](#)



## Optoplex 3 Port Tunable Filter

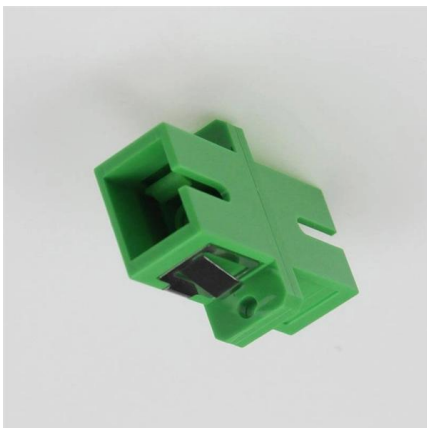
Optoplex's Reconfigurable Optical Add/Drop Multiplexer (ROADM) module, also known as Tunable Optical Add/Drop Multiplexer (TOADM), is based on a

[Contact Us](#)

## ITU-T Rec. G.672 (10/2020) Characteristics of multi-degree

Characteristics of multi-degree reconfigurable optical add/drop multiplexers Summary Recommendation ITU-T G.672 provides a description of the relevant characteristics of multi-degree reconfigurable

[Contact Us](#)



## US20210250116A1

An approach for realizing low-power, high-port-count optical switching systems, such as OXCs, WXC's, and ROADMs is presented. Optical switching systems in accordance with the present disclosure

[Contact Us](#)

## PRODUCT BROCHURE 6500 Packet-Optical



and respond on demand to meet changing customer expectations and unpredictable traffic requirements. Ciena's 6500 Packet-Optical Platform leverages the latest technology innovation--from 800G

[Contact Us](#)



### reconfigurable optical add/drop multiplexer

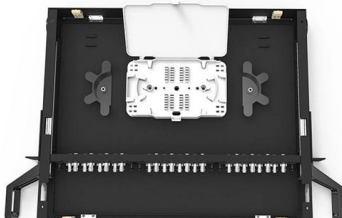
A reconfigurable optical add-drop multiplexer (ROADM) is a key component in wavelength-division multiplexing (WDM) optical communication networks. It allows for flexible and dynamic routing of

[Contact Us](#)

### Reconfigurable optical add-drop multiplexer

In optical communication, a reconfigurable optical add-drop multiplexer (ROADM) is a form of optical add-drop multiplexer that adds the ability to remotely switch traffic from a wavelength-division

[Contact Us](#)



### Optimizing performance in elastic optical networks using advanced

Hence, a finer granularity that aligns seamlessly with the reconfigurable optical add-drop multiplexer (ROADM) hardware requirements is proposed. The wavelength- selective switch (WSS) is crucial in

[Contact Us](#)

### Optical Add-Drop Multiplexer (OADM)



## Explained

Learn about Optical Add-Drop Multiplexers (OADMs), key components in WDM optical networks. Understand their function, architectures (parallel, serial, band

[Contact Us](#)



### Reconfigurable optical add/drop multiplexer

A reconfigurable optical add/drop multiplexer (ROADM) is a node device in an optical fiber communications network. A basic function of the reconfigurable optical add/drop multiplexer is to

[Contact Us](#)

### Reconfigurable Add/Drop Multiplexer Design to Implement

Reconfigurable optical add-drop multiplexer (ROADM) is a key network element enabling flexible handling of wavelengths. Its architecture allows for remote traffic provisioning at the

[Contact Us](#)



### What are ROADMs?

Reconfigurable Optical Add-Drop Multiplexers (ROADMs) have transformed optical networks, offering flexibility, efficiency and improved performance for network

[Contact Us](#)



## Contact Us

---

For datasheets, pricing, or custom fiber access solutions, please visit:  
<https://frindel.es>