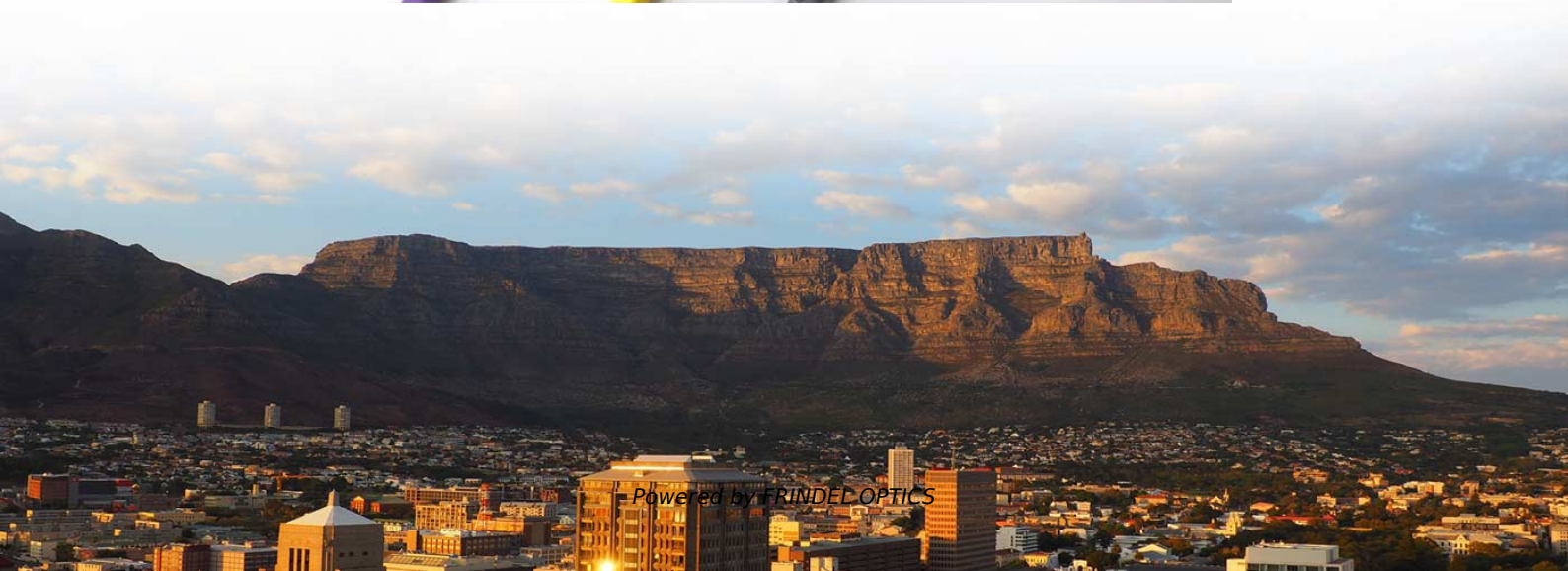
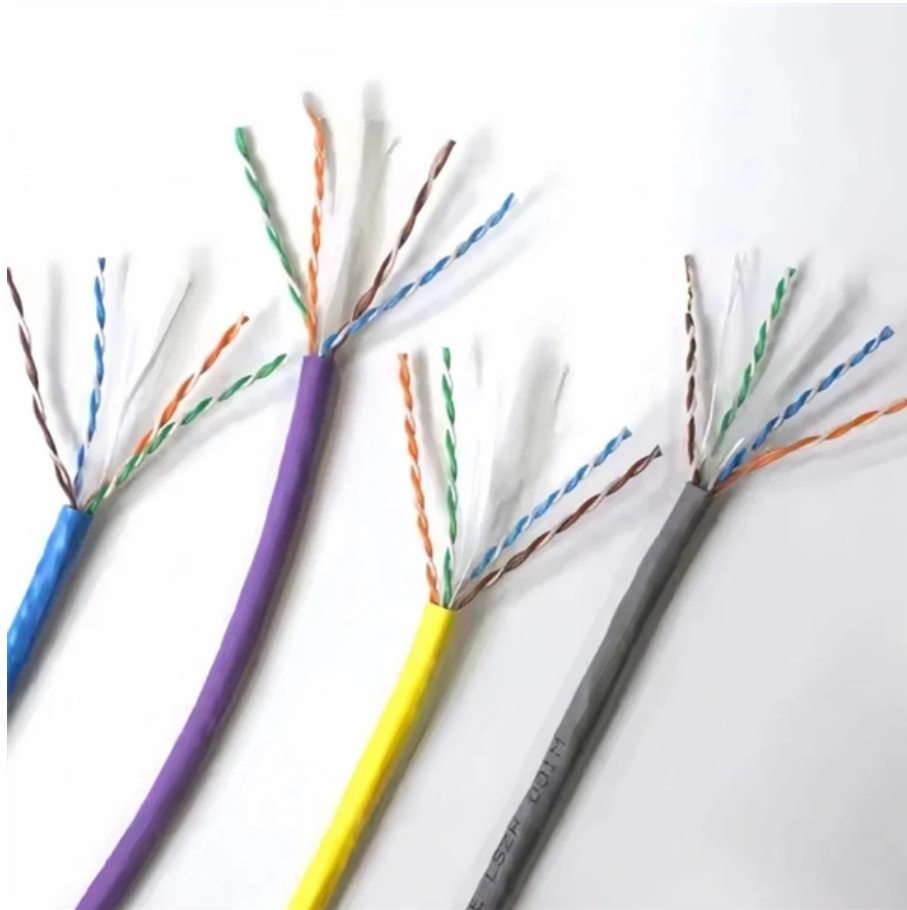


# Reading of light source power meter





## Overview

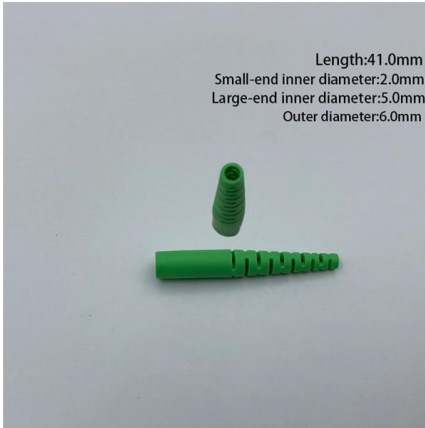
---

When combined with a light source, the instrument is called an Optical Loss Test Set, or OLTS, and is typically used to measure optical power and end-to-end optical loss. More advanced OLTS may incorporate two or more power meters, and so can measure Optical Return Loss.



## Reading of light source power meter

---



### The FOA Reference For Fiber Optics

The optical power meter usually reads in dBm for power measurements or dB with respect to a user-set reference value for loss. While most power meters have

[Contact Us](#)

### How to Use Optical Light Source and Power Meter , FS

Optical power meter and optical light source are often used together to measure fiber optic loss, check fiber link continuity and quality.

[Contact Us](#)



### OTDR, Light Source, And Power Meter: Which To

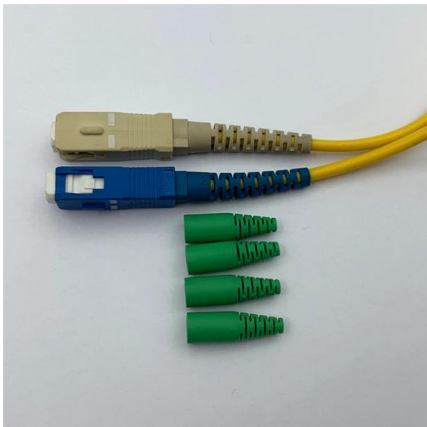
A light source can be used to identify where the problem is occurring, and a power meter can be used to measure the loss of light at that location. For

[Contact Us](#)



### Optical Power Meters - optical power measurement

Optical power meters are instruments for optical power measurements, based on heating of an absorber structure, for example, or on a photodiode.



### How to read optical power meter?

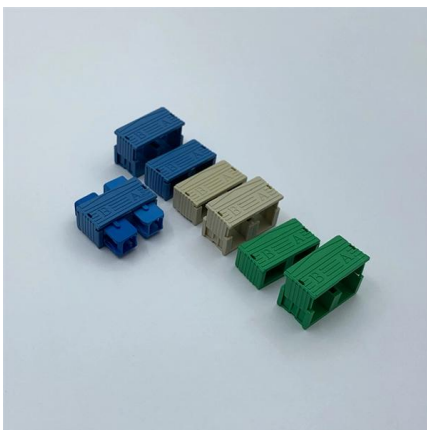
All of our surgical devices and whether they are working correctly and producing the appropriate amount of light can be measured with an Optical Power Meter. This matters because an

[Contact Us](#)

### Optical Power Meters: Understand Their Uses and Internals

An optical power meter (OPM) measures the power levels of light signals in devices that transmit data or power using light. The

[Contact Us](#)



### Beginner's Guide to Power Meter Usage for Optical

Use a power meter for fiber optic testing by cleaning connectors, setting wavelength, calibrating, and following step-by-step procedures for

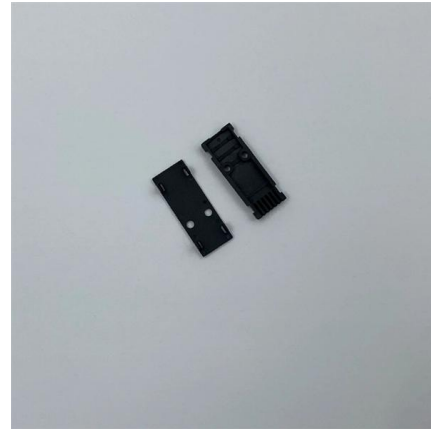
[Contact Us](#)



## Welcome to Channel Dive , Channel Dive

The team will be managed by me, in addition to my daily editorial duties at Light Reading. Our goal is to earn your trust as a fair and valuable

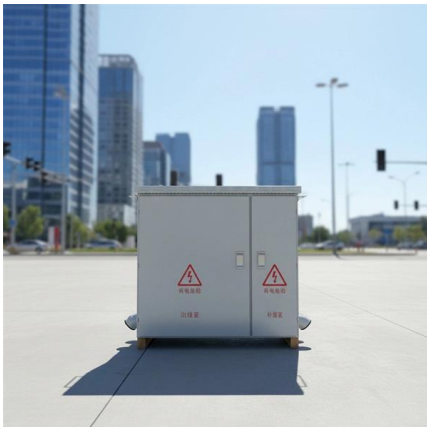
[Contact Us](#)



## What is the Purpose of a Power Meter & Light Source?

A Power Meter & Light Source is a low cost way to certify optical fiber. This equipment are used to measure continuity, loss strength of the optical signal.

[Contact Us](#)



## When to use an OTDR vs light source power meters

Choosing an OTDR vs a light source power meter for fiber testing can be complicated. Read this blog post and learn all about OLTS, LSPM, and OTDR

[Contact Us](#)



## How to Measure Fiber Loss with Optical Power Meter

Fiber loss is the difference between the power when light is coupled from the transmitting end to the fiber and the power when the light reaches the

[Contact Us](#)





## Optical Power Meters: A Comprehensive Guide to

To ensure accurate measurements, optical power meters feature calibration capabilities. Calibration involves comparing the readings of a power

[Contact Us](#)



## Fiber Optical Cable Testing: Visible Light Source

Laser light sources can cause serious eye damage. Power-Meter-and-Light-Source Testing: The Key to Accurate Measurement of Fiber Attenuation

[Contact Us](#)

## Optical Power Meters: A Comprehensive Guide to

An optical power meter is a crucial measurement device used to assess the signal strength of an optical fiber or light source. When selecting an

[Contact Us](#)



## The FOA Reference For Fiber Optics

Optical power meters typically use semiconductor detectors since they are sensitive to light in the wavelengths and power levels common to fiber optics. Most fiber

[Contact Us](#)



## Quick Guide to Fibre Fault Testing: Utilising Power Meters and Light

This guide will guide you through the essential procedures of using power meters and light sources to diagnose and maintain your fibre optic infrastructure.

[Contact Us](#)



## Introduction about Fiber Optic Power Meter and Light

A Power Meter & Light Source is a low cost way to certify optical fiber. These two pieces of test equipment are used to measure fiber optic light

[Contact Us](#)

## Learn How to Do a Power Meter and Light Source Test

In this video, you will learn 1 & 2 cord reference testing using the FIS Power Meter and Light Source test equipment. more

[Contact Us](#)



## Learn How to Do a Power Meter and Light Source Test

In this video, you will learn one and two-patch cord reference testing using the FIS Power Meter and Light Source.

[Contact Us](#)



## How to use Light source and Power meter

Connect the optical light source to the transmitting end of the test cable. Connect the power meter to the receiving end of the test cable. Turn on the source and select the wavelength you want

[Contact Us](#)



## How to use optical light source and power meter?

Finally, optical light sources and fiber optic power meter are crucial equipment for fiber optics applications. Understanding what these tools perform and their correct connection and

[Contact Us](#)

## How to Use an Optical Power Meter(OPM): A Beginner's

Get everything you need to know about an optical power meter including its types, applications and fiber optic power meter test procedure.

[Contact Us](#)



## Light Source and Power Meter Testing, by Ed Hall

Light Source and Power Meter Tests are done by putting a known optical level (the Light Source) at one end of a link and then measuring the level of light received at the other end with the power level.

[Contact Us](#)



## Power Meter & Light Source inSTRUCTION Manual

FIS Hand Held Power Meters and Light Sources are suitable for field installation and service work as well as laboratory use.

[Contact Us](#)



### Loss Testing with a Power Meter & Light Source

This blog focuses on going through the steps for loss testing with a power meter and light source.

[Contact Us](#)



8-Port PLC Fiber Splitter Box

12-Port SC Fiber Splitter Box

Size: 235\*215\*75mm  
Material: ABS, IP65,



### Optical Power Meters

Power Meter and Laser Source The source of light can be an LED (Light Emitting Diode) or an optical laser that has been designed to be a part of

[Contact Us](#)



### Optical Power Meters

Benchtop optical power meters provide accurate measurements of optical power and energy by reading the output of calibrated optical sensors.

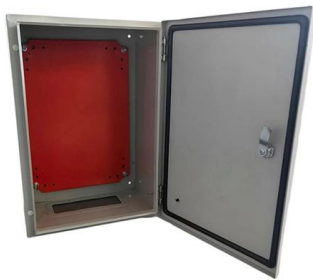
[Contact Us](#)



## Light Source and Power Meter (LSPM) Set Explained

Learn how a Light Source and Power Meter (LSPM) set works for fiber optic insertion loss testing. Compare single-wavelength and dual-wavelength sets, TIA-526 reference methods, and how to build

[Contact Us](#)



## Ultimate Guide to Choosing the Right Fiber Optic Power

Discover how to choose the right fiber optic power meter for your needs. Learn to measure the power of optical signals in fiber optic cables with

[Contact Us](#)

## Contact Us

---

For datasheets, pricing, or custom fiber access solutions, please visit:  
<https://frindel.es>