

Quotation for Central Loose Tube Indoor Optical Cable





Quotation for Central Loose Tube Indoor Optical Cable



Central Loose Tube Fiber Optic Cables

Central loose tube fiber optic cable contains one tube with 2 - 24 fibers, which is

[Contact Us](#)

CENTRAL TUBE UNIVERSAL INDOOR OUTDOOR LSZH OPTICAL FIBER CABLE

The K2 KONEKT Central Tube Universal Indoor/Outdoor LSZH Cable offers a high-performance and safe solution for environments that demand flame resistance, water blocking, and rodent protection.

[Contact Us](#)



Central Tube Indoor Cable

LSZH/FRNC Central Tube Indoor Cable indoor cables can be deployed indoor as building backbone (riser) cabling as well as for the cabling between floor distributors. The loose tube cable construction,

[Contact Us](#)

Loose Tube Fiber Optic Cables , OPTRAL

All our catalogues are available online. Just click on a catalogue, browse through our product ranges and/or download it. Discover our loose tube cables for indoor and

[Contact Us](#)



Infinique Central Loose Tube 12 Core Singlemode Cable

Infinique Central Loose Tube Cables are suitable for both indoor and outdoor applications. They are designed not just to save space and time but also to further simplify fiber management by eliminating

[Contact Us](#)



Central Loose Tube Fiber Cable

CPR B2ca. Universal (Indoor/Outdoor) optical fiber Central Loose Tube (jelly filled tube) cable with glass yarns as strength member, Low Smoke Zero Halogen inner jacket, Corrugated Steel Tape (Full)

[Contact Us](#)



Central Loose Tube Cable Supplier, OMC Loose Tube

OMC has over 10 years of experience in producing Central Loose Tube Fiber Cable with Gel. We combine cutting-edge technology with rugged materials to ensure

[Contact Us](#)





Loose Tube and Riser Rated Indoor/Outdoor Loose Tube Cable

High-fiber count, Loose Tube & Riser Rated Indoor/Outdoor Loose Tube Cable assemblies provide a safe and proven method of utilizing preterminated connector technology for outside plant applications.

[Contact Us](#)



012TEZ-13188E2G , Central Tube Indoor Cable 12F G50 MMF

Central Tube Indoor Cable indoor cables are designed for installation in conduits, ducts and in-house. The loose tube cable construction, by isolating the fibers from installations and environmental rigors,

[Contact Us](#)

Central Loose Tube Cable Supplier, OMC Loose Tube

The gel-filled central tube ensures excellent moisture resistance, protecting the optical fiber from environmental factors such as water, humidity, and temperature

[Contact Us](#)



Fibre Optical Central Loose Tube Cable Indoor/Outdoor

Applications Backbone Cabling, Telecommunication and Data, and Secondary distribution applications. Structural Drawing

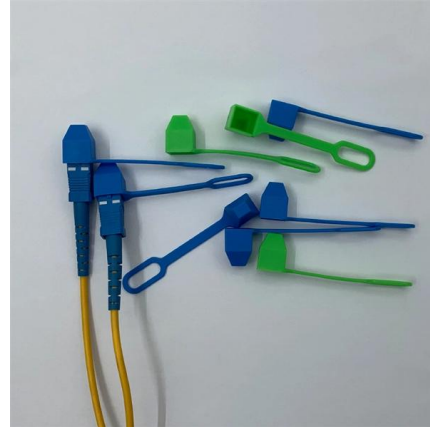
[Contact Us](#)



Indoor Outdoor Fiber Cable , OMC Loose Tube Cable

Representative models include 1-12F central loose tube cable with jelly, high-tensile dry types without jelly, and armored central loose tube cable for indoor/outdoor use when extra protection is required.

[Contact Us](#)



Central Loose Tube Fiber Cable

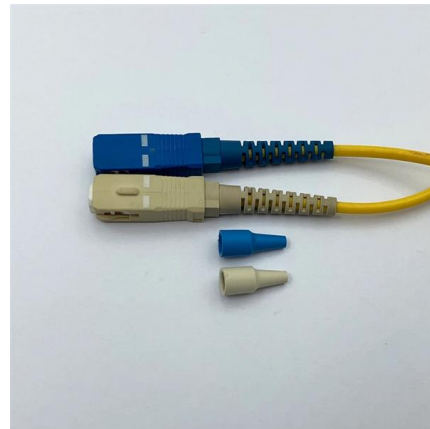
CPR B2ca. Universal (Indoor/Outdoor) optical fiber Central Loose Tube (jelly filled tube) cable with glass yarns as strength member, Corrugated Steel Tape (Full Rodent Protected) armor and Low Smoke

[Contact Us](#)

Central Loose Tube Fiber Optic Cables

This document provides ordering information and specifications for Belden's GUCN central loose tube cable. The cable features: 1. Up to 24 optical fibers in a central

[Contact Us](#)



Loose Tube Fiber Optic Cables , OPTRAL

Discover our loose tube cables for indoor and outdoor use with high fiber density. Robust and reliable solutions for your needs.

[Contact Us](#)



Loose Tube Circuit Integrity Indoor/Outdoor Cable , Corning

Corning MPC (multipurpose cable) loose tube cables are flame-retardant, indoor/outdoor cables designed for interbuilding and intrabuilding backbones; with a special focus on usage in tunnels and

[Contact Us](#)



Central Loose Tube Fiber Cable

CPR Dca. Universal (Indoor/Outdoor) optical fiber Central Loose Tube (jelly filled tube) cable with glass yarns (standard rodent protection) as strength member and Low Smoke Zero Halogen outer jacket.

[Contact Us](#)

Central Tube Optical Cable , Central Loose Tube Cable , Fasten

The central tube optical cable is composed of 2 to 12 fibers. It is used for aerial and duct applications.

[Contact Us](#)



Central Loose Tube Optical Fiber Cable

Central Loose Tube Fiber Cables are ideal for indoor/outdoor applications, including use in conduit, direct burial, lashed aerial and trunking applications.

[Contact Us](#)



Central Loose Tube Fiber Optic Cables, Fiber Optic Cables

Central Loose Tube Fiber Optic Cables is characterized by light weight and small diameter, suitable for both aerial and duct installation. The cable can also be used for direct burial for armoured option.

[Contact Us](#)



Central Loose Tube Fiber Cable

Factory Grade, Indoor/Outdoor, Central Loose-Tube, OS2, 12 Fibers, Gel Filled Tube 3.8mm, Aluminum Interlock Armor, Double Jacket - PVC, OFCR, Ozone-UV-Oil Resistant Availability:

[Contact Us](#)

Loose Tube Fiber Optic Cable

Find here Loose Tube Fiber Optic Cable, Central Loose Tube Fiber Optic Cable manufacturers, suppliers & exporters in India. Get contact details & address of

[Contact Us](#)



Loose Tube Fiber Optic Cable

Reliable and efficient, our loose tube fiber optic cables feature innovative loose tube construction for maximum protection, making them ideal

[Contact Us](#)



Bulk Fiber Optic Cables for Indoor & Outdoor Applications

High quality fiber optic cables from Corning, AFL, OCC, Mohawk and other leading manufacturers. Aerial, ADSS, armored, distribution, direct burial and more.

[Contact Us](#)

02

High Quality Material



High hardness to resist external impact, Good Shaping Performance, Good Look and Anti-rust



Central Loose Tube Cable (Uni Tube)

Product Description: This cable has been designed for LANs and other low fiber count applications. It is based on Central Loose Tube CATV construction. The design caters the protection of the fibers

[Contact Us](#)

Universal central loose tube cable, Euroclass B2

Universal central loose tube cable, Euroclass B2ca CLTDxxxxx-B2ca - KELINE SYSTEM - Optical Fibre Cable X x Y - LSOH - Euroclass B2ca - s1a, d1, a1 - Glass Yarn Rodent Protected OP2 (ID number,

[Contact Us](#)



Central Loose Tube Fiber Cable

Universal (Indoor/Outdoor) optical fiber Central Loose Tube (jelly filled tube) cable with aramid yarns as flexible non-metallic strength member, Corrugated Steel Tape armor and flame retardant LSZH

[Contact Us](#)



Central Loose Tube Fiber Cable

Universal (Indoor/Outdoor) high installation temperature optical fiber Central Loose Tube (jelly filled tube) cable with glass yarns as strength member, Low Smoke Zero Halogen inner jacket, Steel Wire

[Contact Us](#)



Central Tube Indoor Cable , Corning

The loose tube cable construction, by isolating the fibers from installations and environmental rigors, provides stable and highly reliable transmission parameters.

[Contact Us](#)

Contact Us

For datasheets, pricing, or custom fiber access solutions, please visit:
<https://frindel.es>