

# Quick Drilling of Distribution Boxes





## Overview

---

The main function of the explosion-proof distribution box is to ensure the normal operation of electrical equipment in flammable and explosive environments and to prevent explosion accidents caused by electrical sparks. Power tools are heavily used to install distribution box units, with drills and impact drivers being especially common. An electrical distribution box, also known as a power distribution box, panelboard, or consumer unit. Whether you're a DIY enthusiast or simply curious about the process, let's explore the art of drilling holes in junction boxes. This is the preferred method from engineeri es from the inside or outside may work better.



## Quick Drilling of Distribution Boxes

---

### What is the Function of a Distribution Box in Electrical Systems



Understand the function of the distribution box in electrical systems and how it ensures safe and efficient power distribution.

[Contact Us](#)

### Methods for Cutting Holes in Hubbell Enclosures

Quazite UL Listed enclosures with holes drilled in the field may qualify for UL Listing as long as the holes do not exceed more than 25% of the area of each sidewall and as long as the holes do not cut into a



[Contact Us](#)



### Electric Drill Installation LED Distribution Box

Technicians use electric drills to install and assemble LED power distribution boxes.

[Contact Us](#)

### Distribution Box Installation: Advanced Techniques

Distribution Box Installation: Advanced Techniques. The installation of a distribution box is explored in detail, highlighting advanced techniques for achieving a professional and efficient setup.



### Can holes be drilled in explosion-proof boxes?

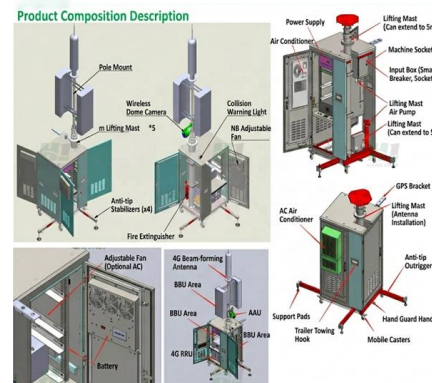
From a technical point of view, it is feasible to drill holes in the explosion-proof box. However, certain safety regulations and technical requirements need to be

[Contact Us](#)

### What you need to know about the manufacturing process of distribution

Automation handles the repetitive, precision tasks, freeing technicians for value-added work. Final Thoughts: Complexity Behind the Simplicity Opening the door to a distribution box

[Contact Us](#)



### Junction box drilling 101: a step-by-step guide for beginners

Electrical junction boxes play a crucial role in the distribution of electricity throughout a home or building. Proper installation of these boxes is essential for safe and efficient electrical

[Contact Us](#)



## What hand and power tools are used to install a

Install distribution box systems with essential hand tools like screwdrivers and pliers, plus power tools such as drills and impact drivers for efficient setup.

[Contact Us](#)



## Area distribution boxes with connectors

The area distribution box associated with the copper or optical feedthrough sockets allows total flexibility: the connections close to the workstation are centralised.

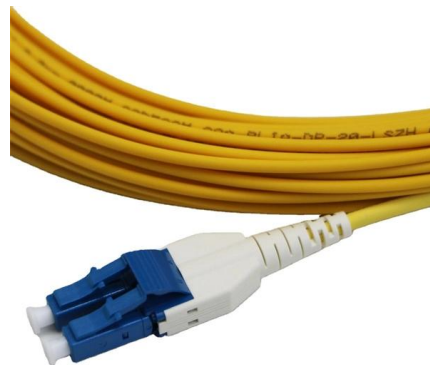
[Contact Us](#)



## The Complete Guide to Distribution Box: Installation, Types & More

Blog The Complete Guide to Distribution Box: Installation, Types & More By Admin Aug 2, 2025  
No Comments # distribution box Introduction  
Electrical systems power our homes, offices, and

[Contact Us](#)



## Junction box drilling 101: a step-by-step guide for beginners

By following the steps outlined in this guide, you can drill junction boxes with precision and confidence. Remember to prioritize safety, use the right tools, and take your time.

[Contact Us](#)



## Understanding Distribution Boxes: Your Guide to Power

Weatherproof Distribution Boxes These serve specific outdoor purposes, with rain, dust, and extreme temperatures sealed shut, protecting any

[Contact Us](#)



## What Is an Electrical Distribution Box? A Complete Guide

What Is an Electrical Distribution Box? An electrical distribution box serves as a centralized unit for distributing electrical power within various structures,

[Contact Us](#)

## How to Install the Splitter Distribution Box

How to install the splitter distribution box is the important information we need to know. This article includes the following:

[Contact Us](#)



## Grounding System Installation Standards for Distribution Boxes and

Hey there! If you're working with electrical systems, you know that grounding isn't just some bureaucratic requirement--it's literally the difference between a safe, functional system and a potential disaster.

[Contact Us](#)

## Essential Steps for Effective Septic



## Distribution Box Installation

Learn how to install a septic distribution box with essential steps, tips, and maintenance recommendations for long-lasting efficiency.

[Contact Us](#)



## Types of Distribution Boxes Explained with Applications & Functions

These Boxes eliminate chances of short circuits by distributing electricity in the right portions and serve as the load centre and distributor of electrical power.

[Contact Us](#)

## Comprehensive Understanding of Distribution Box

A distribution box helps manage electricity in homes or workplaces. It makes sure power flows safely and efficiently to devices. Let's look at its main jobs. Power distribution and circuit management The



[Contact Us](#)



## Just interested to know how you all make holes in metal enclosures,

This was prompted by me seeing a couple of videos of cone/step drill being used to make holes in a CU. I use a step bit quite often, especially in plastic enclosures, but in metal ones the

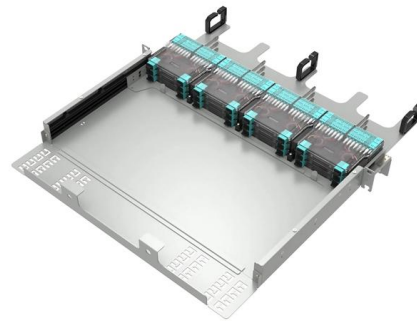
[Contact Us](#)



## Distribution Boxes Explained: Types, Functions, and

Learn about distribution boxes, their types, functions, and safety features to ensure efficient and secure electrical power distribution in any building.

[Contact Us](#)



### Size determination, installation method and wiring mode

The distribution box is the central hub of the home circuit and the general control of our daily power consumption. It is an indispensable electrical equipment. If there

[Contact Us](#)

### A Step-By-Step Guide To Drilling A Hole In A Junction

Learn how to safely and effectively drill a hole in a junction box with this step-by-step guide. Perfect for DIYers and electricians.

[Contact Us](#)



### How to Install a Distribution Box--A Comprehensive

First of all, you need to have a simple understanding of the definition of a distribution box, and make it clear which kind of distribution box you want to

[Contact Us](#)

### The installation requirements for the



## distribution box

A distribution box is the heart of any electrical system. It takes the incoming power and safely distributes it to different circuits throughout your

[Contact Us](#)



## A complete guide to custom distribution boxes

Choosing a custom distribution box is essential for achieving maximum safety, functionality, and operational efficiency. As a leading Custom Distribution

[Contact Us](#)

## Contact Us

---

For datasheets, pricing, or custom fiber access solutions, please visit:  
<https://frindel.es>