

Pressure test of junction box





Pressure test of junction box



NEC 500 Class I/Div I Purged Junction Box Requirements

We run a test stand that is rated Class I/Div I hazardous area in which we run multiple electric pumps from low voltage up to 6600v. Since we install and tear down the pump connection

[Contact Us](#)

Junction Boxes

Junction boxes with screw-type terminals must be installed in locations that allow inspection, testing, and maintenance in compliance with

[Contact Us](#)



JUNCTION BOX AND BAYMARSHALLING KIOSK

SCOPE : The specification covers design, manufacture, shop assembly testing of CT junction box, PT junction box, CVT Junction Box and Bay Marshalling Kiosk as per guideline of Supply and Erection

[Contact Us](#)



How to Maintain and Inspect Your Junction Boxes?

Before you begin inspecting or maintaining your junction box, always turn off the power to the electrical circuit that the box controls. This ensures that



NEC 500 Class I/Div I Purged Junction Box Requirements

These systems have always used in pressure switch (or transmitter) to ensure that the enclosure is always pressurized. This, of course, will not work unless the entry cables are properly

[Contact Us](#)



Master Electrician's Tool: How to Use a Multimeter to Test Junction

This comprehensive guide will delve into the intricacies of testing a junction box using a multimeter, empowering you with the knowledge to diagnose and resolve electrical issues.

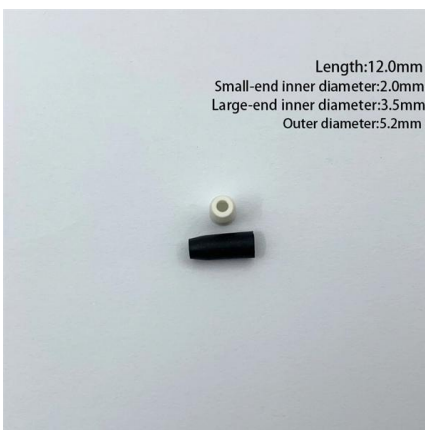
[Contact Us](#)



Roll-out for Test Round 2023 Programs: Explosion Pressure (EP)

For the program "Connection and Junction Boxes (CJB)- Test Round 2023" the general routine procedure is described by the standard "Explosive atmospheres - Part 7: Equipment protection by

[Contact Us](#)

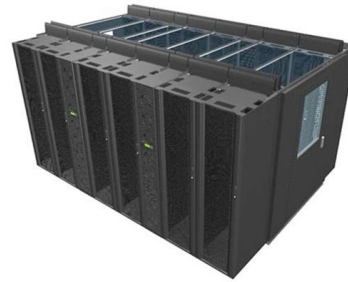




Instrument Junction Boxes

Junction Box Materials of Construction Junction boxes can be manufactured in a variety of materials including stainless steel, mild steel, glass reinforced polyester,

[Contact Us](#)



Junction Box Inspection and Test Plan

This content provides you with a sample junction box inspection and test plan. You need to modify this junction box ITP to meet your specifications.

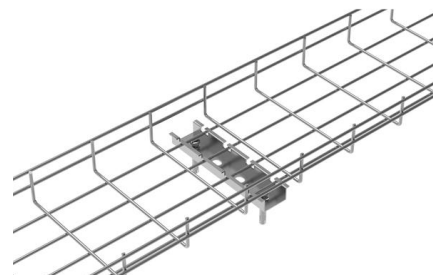
[Contact Us](#)



IEC 62790 INTERNATIONAL

Junction boxes for photovoltaic modules - Safety requirements and tests INTERNATIONAL ELECTROTECHNICAL COMMISSION ICS 27.160 ISBN 978-2-8322-8680-7 Warning! Make sure

[Contact Us](#)



IEC 62790:2020

IEC 62790:2020 IEC 62790:2020 describes safety requirements, constructional requirements and tests for junction boxes up to 1 500 V DC for use on photovoltaic modules in accordance with class II of

[Contact Us](#)



TEST REPORT

7.9 The provision for fixing accessories to boxes
7.9.1 boxes supplied with screws 7.9.2 boxes
intended to received screws 7.9.3 boxes
intended to received claws 7.9.4 boxes intended
to received other

[Contact Us](#)



TE Connectivity

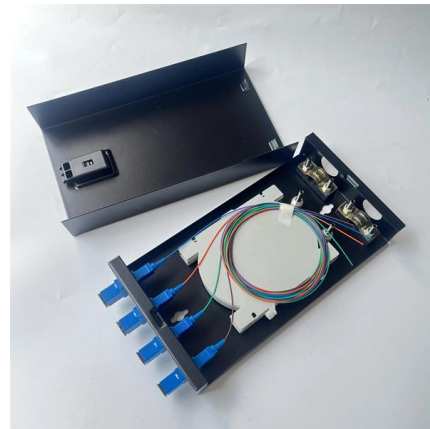
Hier sollte eine Beschreibung angezeigt werden,
diese Seite lässt dies jedoch nicht zu.

[Contact Us](#)

IEC 62790 - Junction Box and Cable Testing for PV Modules

To comply with local regulations and customer
demands, the company must conduct thorough
junction box and cable testing, including IEC
62790 compliance. Failure to do so could result
in product

[Contact Us](#)



Update on Standard - revised junction box standard IEC

Junction box manufacturer will have enough time
and limited effort to update their certification
from IEC 62790:2014 to IEC 62790:2020. IEC
standards alone do not

[Contact Us](#)



What is an IP-Rated Junction Box?

Environments like car washes demand junction boxes with at least IP05 protection. An IP05 junction box can withstand multidirectional low-pressure jets of water. An

[Contact Us](#)



50KW modular power converter

Flexible Configuration

- Modular Design, Expanding as Required
- Small/light, V-Mount
- Installed in Parallel for Expansion

Powerful Function

- Support PV-FSS
- Grid Support, Equipped with SVG Technology
- On-Grid and Off-Grid Operation

Reliable Protection

- Outdoor IP65 Design
- Sufficient Protection Functions Equipped

25-Point Instrumentation Junction Box (JB) Wiring and

Instrumentation Junction Boxes (JBs) are very important parts of control and automation systems. They connect field instruments and control

[Contact Us](#)

NEMA, UL-Listed, and IP-Rated Junction Boxes

On the contrary, the UL junction box ratings require that the manufacturers systematize independent testing of their distinct standard compliance by use of

[Contact Us](#)



JUNCTION BOXES AND TEST FACILITIES -

JUNCTION BOXES AND TEST FACILITIES - CATHODIC PROTECTION Junction boxes, distribution boxes and test posts Junction boxes and distribution boxes

[Contact Us](#)

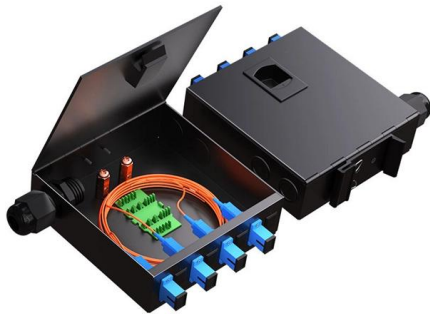




IP Ratings Explained: How to Choose the Right

Understand IP ratings and learn how to choose the right weatherproof junction box for safe, durable electrical installations in any environment.

[Contact Us](#)



Junction Boxes, Requirements and Test Methods

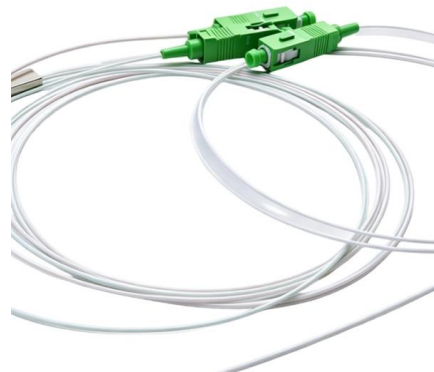
These guidelines contain minimum requirements for junction boxes in classes A, B and C for use in intruder and hold-up alarm systems as well as the associated test methods.

[Contact Us](#)

Junction Boxes 101

Junction boxes are enclosures that are centralized hubs for controlling connections. In test and measurement, Interface Junction Boxes function as tools

[Contact Us](#)



Electrical Junction Box Inspection Checklist

The document appears to be an electrical and mechanical completion check sheet for junction boxes used in the Wortel Field Development Project by Santos

[Contact Us](#)

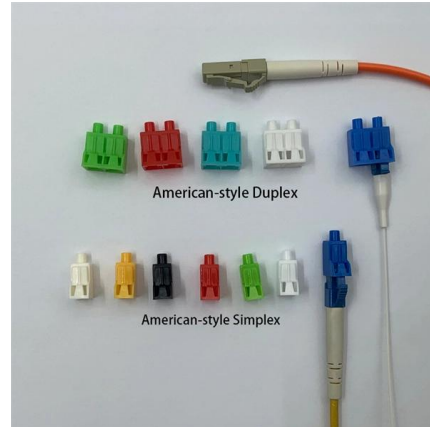
How to Maintain and Inspect Your Junction



Boxes?

Maintaining and inspecting your junction boxes is essential to ensure the continued safety, functionality, and reliability of your electrical systems. Over

[Contact Us](#)



What is a Junction Box? A Complete Beginner's Guide

Learn what a junction box is, why it matters, the different types available, and how to choose the right junction box for safety and reliability.

[Contact Us](#)

Contact Us

For datasheets, pricing, or custom fiber access solutions, please visit:
<https://frindel.es>