

Powering the switch for PoE





Powering the switch for PoE



Power over Ethernet

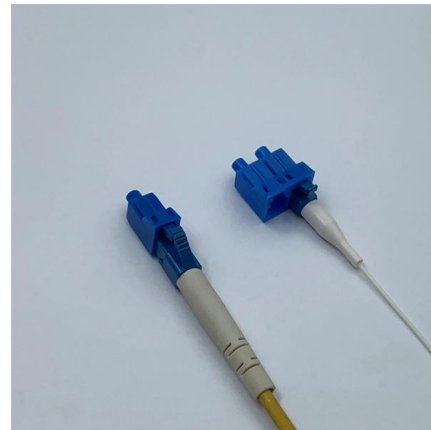
Power over Ethernet In this configuration, an Ethernet connection includes Power over Ethernet (PoE) (gray cable looping below), and a PoE splitter provides a

[Contact Us](#)

Configuring Power over Ethernet

The switch detects a Cisco prestandard or an IEEE-compliant powered device when the PoE-capable port is in the no-shutdown state, PoE is enabled (the default), and the connected device is not

[Contact Us](#)



Understanding PoE on EX Series Switches , Junos OS , Juniper

The EX4400 switches can be configured to deliver fast PoE capability, which enables the switches to deliver PoE power to connected PoE devices within a few seconds of power being applied to the

[Contact Us](#)



PoE Switch Setup: What Steps You Need to Take

In this video, I explain how to set up a Power over Ethernet (PoE) switch, and I also detail some things to consider when setting up your PoE switch. more



Trendnet

Shop Trendnet 8 Port Gigabit EdgeSmart PoE+ Switch, 8 x Gigabit PoE+ Ports, 64W PoE Power Budget, Managed PoE+ Switch, Wall Unknown products at Best Buy.

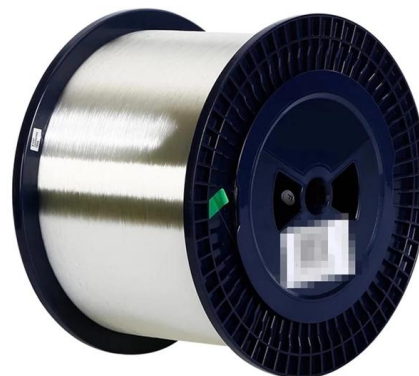
[Contact Us](#)



Cisco C1300-8FP-2G, 8-Port Full PoE Gigabit Managed Switch

Boost your networking solutions with the Cisco C1300-8FP-2G, an 8-Port Full PoE Gigabit Managed Switch, ensuring robust performance for your clientele. Offer your customers superior connectivity

[Contact Us](#)



Power A Switch with PoE: Understanding the Capabilities

Explore how PoE technology can power network switches, offering a comprehensive insight into its capabilities, benefits, and considerations for IT professionals and business owners.

[Contact Us](#)



Challenges and solutions for PoE systems in Ethernet switches



Ethernet switches play an important role in PoE systems, as they power powered-device (PD) loads such as Internet Protocol (IP) phones, IP cameras, and wireless access points and speakers.

[Contact Us](#)



Unlocking the Potential of a PoE Switch: A

Discover how a PoE switch can elevate your business network by delivering power and data over Ethernet cables, simplifying deployments even

[Contact Us](#)

PoE vs PoE+ vs PoE++ Switch: How to Choose?

This article explains the differences between PoE, PoE+, and PoE++ switches, and how to choose the right type that best suits your needs.



[Contact Us](#)



Unlocking the Secrets of PoE Switches

Read this Power over Ethernet switch guide covering standards, power budgets, ports, and installation tips for smart, scalable, and simplified

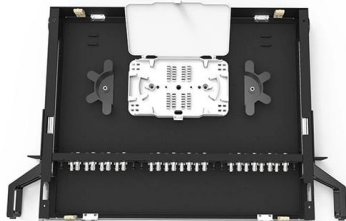
[Contact Us](#)



A Comprehensive guide to PoE Switches and their Uses

A PoE (Power over Ethernet) switch is a network switch that delivers both power and data through a single Ethernet cable to connected devices such as IP cameras,

[Contact Us](#)



What is Power over Ethernet (PoE)?

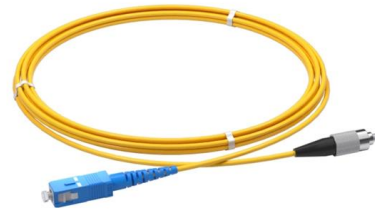
Power over Ethernet (PoE) is a technology for delivering DC power to devices over copper Ethernet cabling, without separate power supplies or outlets.

[Contact Us](#)

PoE Switch Tutorial: Simplifying Network Power

First, connect the main PoE switch to a router or a network switch using an Ethernet cable. Second, connect the other PoE switches to the core

[Contact Us](#)



The Definitive Guide To Power Over Ethernet , PoE

The perfect solution for your power-hungry devices, our 24 Port Gigabit Unmanaged PoE Switch delivers reliable and lightning-fast connectivity without the hassle of

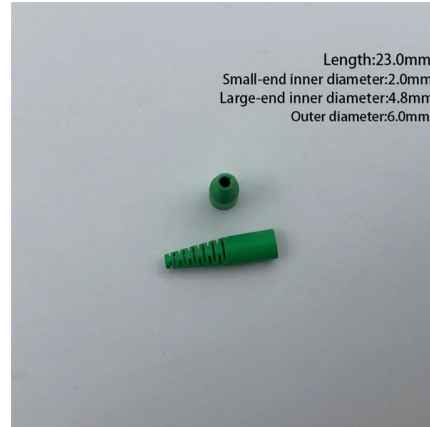
[Contact Us](#)



Configuring PoE

The switch tracks its power budget (the amount of power available on the switch for PoE). The switch performs power-accounting calculations when a port is granted or denied power to keep the power

[Contact Us](#)



PoE Availability and Modes

PoE Availability and Power Requirements PoE Availability is a switch's total power, in Watts, that it can distribute among all connected clients. Your PoE Availability

[Contact Us](#)



What Is Power Over Ethernet (PoE)? A Clear Guide to How It Works

The PoE switch supplies power, the Ethernet cable carries both power and data, and the device receives everything through one connection. This is the most straightforward PoE

[Contact Us](#)



PoE Switch Tutorial: Simplifying Network Power

What is a PoE Switch? A PoE switch is a network switch that utilizes PoE technology to transmit power and data over the same Ethernet cable to

[Contact Us](#)





Installing and Troubleshooting Power over Ethernet (PoE)

What Is a PoE Circuit? A PoE circuit is made up of three parts: Power Sourcing Equipment (PSE), which injects power over the same cabling as the data signals.

[Contact Us](#)



PoE Feature Overview and Configuration Guide

Introduction This guide provides an introduction to Power over Ethernet technology, the PoE standards, PoE devices, and how to configure PoE on your switch. PoE is a method of supplying power to

[Contact Us](#)



HPE Aruba JL811A Instant On 1830 8-Port GbE 4p PoE 65W Fanless

HPE Aruba JL811A 1830, 8-Port GbE 4p PoE 65W, 16 Gbps, fanless, Layer 2 smart-managed switch. Free priority shipping, Lifetime Warranty, Advanced Replacement.

[Contact Us](#)



What Is PoE Switch? Where Can You Use It?

What Is PoE Switch? Where Can You Use It? What are the differences between a PoE switch and a regular switch? PoE switches deliver power and data over

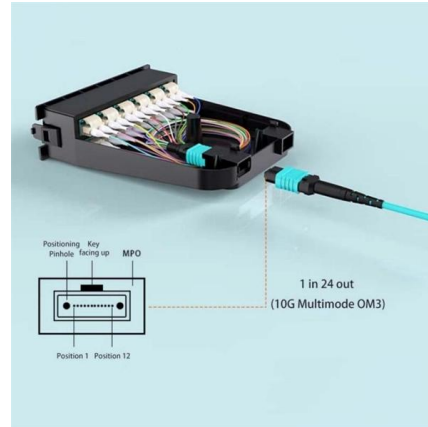
[Contact Us](#)



How To Configure PoE On A Network Switch?

No, a non-PoE switch cannot directly power PoE devices. You would need to use a PoE injector, which adds power to the Ethernet cable before it connects to the device.

[Contact Us](#)



Power-over-Ethernet Switches: PoE, PoE+ & PoE++ , Lantronix

Shop Lantronix enterprise and hardened PoE switches. Deliver data & power over one cable to Wi-Fi access points, security cameras, and IoT devices at the network edge.

[Contact Us](#)

Contact Us

For datasheets, pricing, or custom fiber access solutions, please visit:
<https://frindel.es>