

Power distribution box connected to equipment power supply





Power distribution box connected to equipment power supply



Quick Guide to Power Distribution Unit (PDU)

A power distribution unit, also known as PDU, refers to a device fitted with multiple outputs designed to control and distribute electric power, which is normally used

[Contact Us](#)

Complete Guide for Power Distribution in Servers, Racks, and Data

A Power Distribution Unit (PDU) is a specialized electrical device designed to distribute power from a single input source to multiple output receptacles, specifically engineered for data center and IT

[Contact Us](#)



What does a power distribution box do ?

Moreover, in some cases, power distribution boxes can be used to control the power supply to different areas or equipment based on specific requirements. For

[Contact Us](#)



Power Distribution Unit (PDU) Basics

Power Distribution Unit (PDU) Basics Power distribution unit (that's what PDU stands for) is a device designed to distribute electric power through multiple outlets. It

[Contact Us](#)



The Meaning and Function of Primary, Secondary, and Tertiary

Connects to end-use equipment via switch boxes, forming a three-tier power distribution system. Residual current devices (RCDs) at both the tertiary (equipment-level) and secondary (zone-level)

[Contact Us](#)

Electrical Power distribution panel: diagram, working

1 - Power Distribution Panel: Power distribution panel is used for utilization of equipment. Power supply is received from LT panel and distributed to the

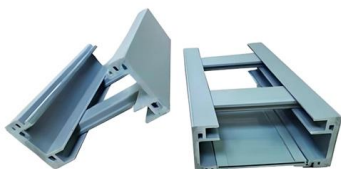
[Contact Us](#)



50A Power Distribution Box

The Champion Power Equipment high-capacity power distribution box is perfect for construction sites, outdoor events, and wherever reliable power is a must. With

[Contact Us](#)





Power Distribution Box Essentials: Functions, Types

A power distribution box electrical captures electricity from the primary power supply and allocates it securely to different electrical circuits in a building

[Contact Us](#)



What is a power distribution unit (PDU)?

A power distribution unit (PDU) is a device for controlling data center electrical power. The most basic PDUs are large power strips without surge protection. They are designed to provide

[Contact Us](#)

Power Distribution Boards: Understanding their role

What is a Power Distribution Board? Power distribution boards, also known as a panelboard or fuse box, is a crucial component in both commercial

[Contact Us](#)



Handbook: Quick guide to power distribution

A power distribution rack provides space-saving power distribution in a flexible design. These racks can offer 168 circuits and accommodate more servers with multiple power cords and rack PDUs with

[Contact Us](#)

Distribution Box Guide: Types, Components



& Solutions

Understand distribution boxes (DB boxes) in 5 minutes. Learn about types, components, functions, and uses. Find the perfect DB box for your needs.

[Contact Us](#)



Handbook: Quick guide to power distribution

Types of power distribution Power distribution is facilitated through different pieces of equipment that take the power conditioned by your uninterruptible power supply (UPS) and send it to your IT

[Contact Us](#)

Data Center Rack Power Distribution Explained: CEE

This article explores how power is connected inside modern data center racks, examining the flow of electricity from facility power feeds to rack

[Contact Us](#)



The Complete Guide to Distribution Box: Installation, Types & More

The main switch, or main breaker, controls the entire electrical supply to the distribution box. This large switch allows you to disconnect all power to the building during emergencies or

[Contact Us](#)



Power Distribution Equipment

Medium-voltage power and distribution transformers are typically available with several types of accessories, including connections to primary and secondary equipment, temperature controllers and

[Contact Us](#)



Power Distribution Boxes: A Complete Overview , Eventech

Power distribution boxes, or PDUs, are essential for efficiently distributing electrical power to various equipment and devices in industrial and commercial settings.

[Contact Us](#)

Understanding Different Types of Power Box for

7. Choosing the Right Power Box for Your Needs
Selecting the right power box for your industrial facility requires careful consideration of factors like

[Contact Us](#)



Power distribution unit

A power distribution unit (PDU) is a device fitted with multiple outputs designed to distribute electric power, especially to racks of computers and networking equipment located within a data center.

[Contact Us](#)



Power Distribution Boxes Explained Simply

Learn what a power distribution box is, how it works, key components, types, and why it's vital for safe and efficient electrical systems.

[Contact Us](#)



Control Power Distribution Box: The Core Hub of the

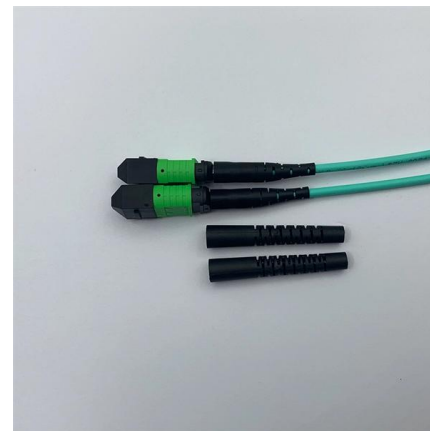
When the normal power source fails, the control power distribution box can quickly switch to the standby power source to ensure the continuity of equipment power

[Contact Us](#)

Understanding Power Distribution Units (PDUs): A

Power Distribution Units (PDUs) play an essential role in the delivery of electricity to servers, network equipment and other IT equipment housed in IT server racks.

[Contact Us](#)



Power Distribution Systems

AC power distribution systems are designed to provide electricity to users in the residential, commercial, and industrial sectors in a safe, efficient, and reliable

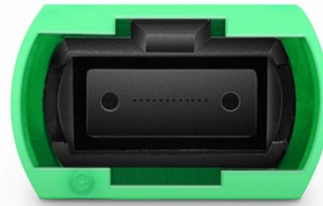
[Contact Us](#)



Everything You Need to Know About Temporary Power

Temporary power distribution boxes are a budget-friendly way to supply electricity to a remote area. You can use them to power electrical

[Contact Us](#)



Quick Guide to Power Distribution Unit (PDU)

The rack-mounted PDU that we'll discuss today mounts directly into the equipment rack to monitor and control the power supply, which assists in balancing power loads for some specific devices like

[Contact Us](#)

Contact Us

For datasheets, pricing, or custom fiber access solutions, please visit:
<https://frindel.es>